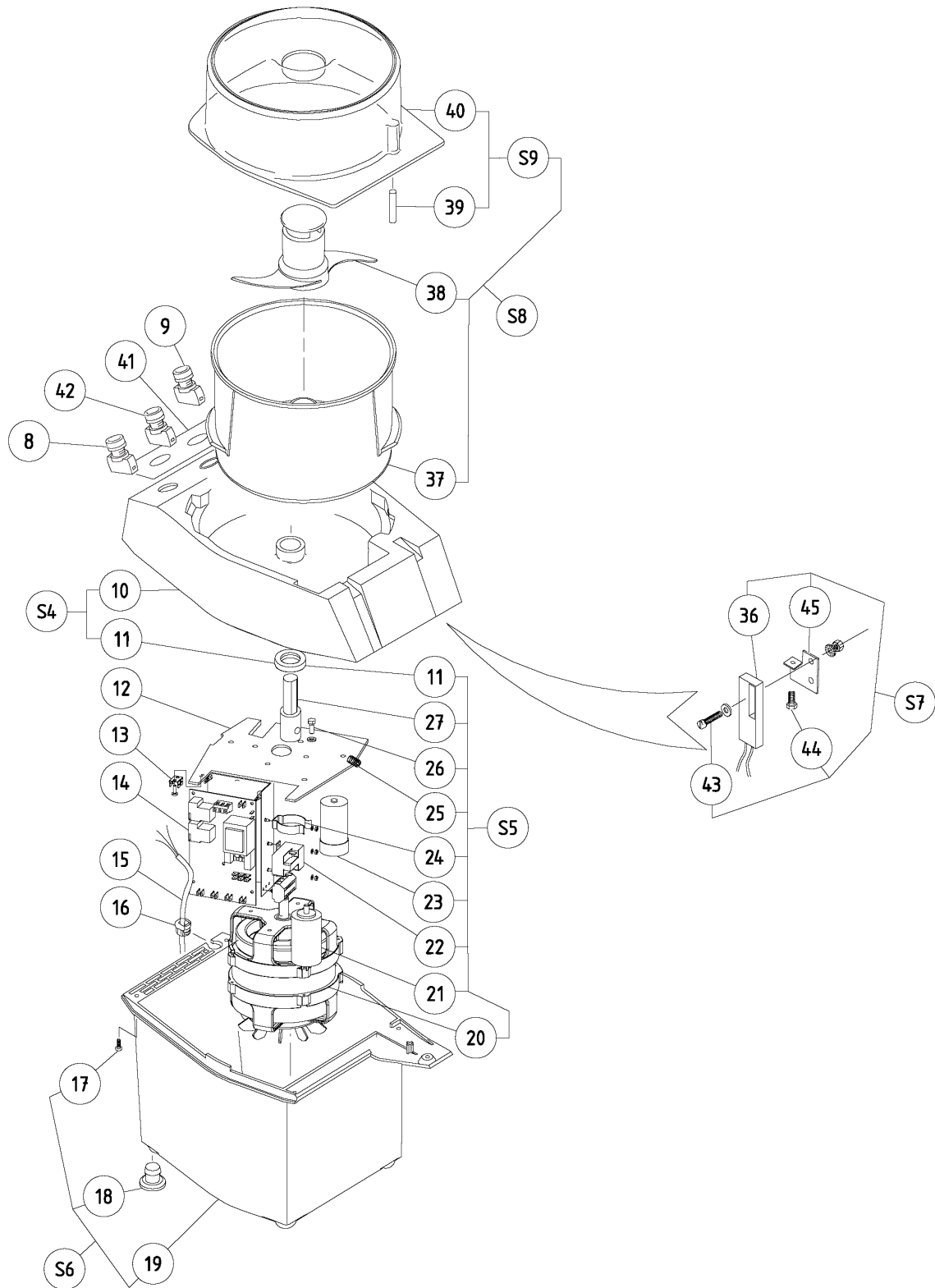


# Vue éclatée / Exploded view / Explosionszeichnung \_\_\_\_\_



B

K 25 FR 01 07

??????	603042								
??????	SPK25	???????? 2					Exploded view		
.		Alias		S			.		(Euro)
0008	OKQ666			S	A			ON PUSH BUTTON	21,01
0009	OKQ665				A			STOP PUSH BUTTON	21,01
0010	OU0699		0D7351					DRIVE UNIT BODY (GREY)	
0011	OU0462							OIL SEAL 20 X 32 X 7	2,93
0012	0D5827							SUPPORT; MOTOR EQ TR17	110,83
0013	0D3567				D			BRASS EARTH TERMINAL (SET X5)	19,80
0014	OKQ429			S	A			POWER BOARD; 1-P 220/240V-50/60HZ	203,84
0015	0D5828							SUPPLY CABLE; STD EQ TR17	44,33
0015	0D5829				D			SUPPLY CABLE; USA EQ TR17	41,92
0015	0D5830				D			SUPPLY CABLE; UK EQ TR17	40,36
0016	0D3566							GROMMET SR 6P3 4 (SET X5)	26,24
0017	0D1004							SCREW; 10 PCS	21,43
0018	0D3565			S	A			PAD TR17; 4 PCS.	23,31
0019	000000								See S6
0020	000000								See S5
0021	0D1465							CAPACITOR; 30MF 450V	14,00
0021	OU0403			S	A			RUN CAPACITOR RC14	6,73
0022	0D1251							KLIXON; 4CR2 777	42,87
0022	OKQ319		0D3329		A			RELAY	
0023	OU0471			S	A			START CAPACITOR; 90MF - 275V	18,17
0023	OU0472		0D6731					CAPACITOR (START) 160MF	
0024	0D3491				D			YOKE 100X18 (SET X5)	23,94
0025	0D0605							SCREW; 10 PCS	19,68
0026	0D2878							WASHER SET CS L6 (X10) TR17	22,58
0026	OKQ494							SCREW; 10 PCS	20,88
0027	0D0788							MULTI GREEN DRIVE SHAFT	32,77
0036	0D6630							SENSOR; PROXIMATE TR17/K25	43,49
0037	653487							2.5 LITRE S/S BOWL FOR CUTTER-MIXER	245,30
0037	653488							2.5 LITRE PLASTIC BOWL FOR CUTTER-MIXER	103,50
0038	653146							SMOOTH BLADE ROTOR	81,73
0039	OKJ062			S	A			MAGNET; 8X35	9,90
0040	000000								See S9
0041	0D2373							FRONT PLATE DITO TR17/K25	87,09
0041	0D5911				D			PLATE; FACADE ELUX/USA TR17	20,01
0042	0D0363		OKQ647		A			K25 PULSE PUSH BUTTON	
0043	033986							SCREW; 10 PCS	18,60

??????	603042								
??????	SPK25	???????? 2					Exploded view		
.		Alias		S			.		(Euro)
0043	033987							SCREW; 10 PCS	18,82
0043	0D2877							WASHER GALVA STL3 SET X10	18,46
0043	0KQ511							SCREW; 10 PCS	18,92
0044	0D1004							SCREW; 10 PCS	21,43
0045	0D2092				D			DETECTOR SUPPORT K25	14,80
00S4	0D0361		0D7356		D			BODY; K25	
00S5	0D1538							MULTI GREEN MOTOR 1/115 60	279,13
00S5	0U0470							MOTOR	441,15
00S6	0D1536		0D7355					MINI/MULTI GREEN EQUIP.CASING	
00S7	0D1533							MINI/MULTI SAFETY SWITCH ASSY.	62,00
00S8	653047							CUTTER EQUIPMENT-S/S BOWL+LID+ROTOR	272,10
00S8	653145							CUTTER EQUIPMENT-PLASTIC BOWL+LID+ROTOR	187,50
00S9	653512							TRANSPARENT LID FOR VEGETABLE CUTTERS	40,39