



CATALOG OF REPLACEMENT PARTS



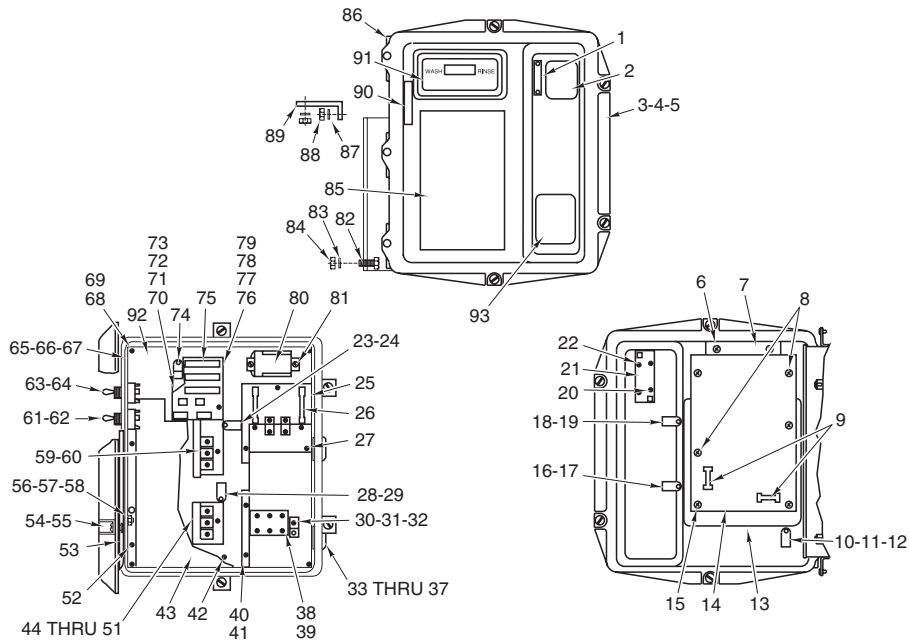
DISHWASHER

AM14	ML-32614
AM14C	ML-32615
AM14P	ML-110025
AM14	ML-110976
AM14C	ML-110977

Table of Contents

4	CONTROL BOX (W/PLASTIC LID) (ML-32614, ML-32615, & ML-110025)
6	CONTROL BOX (W/METAL LID) (PREVIOUS CONSTRUCTION)
9	CONTROL BOX (CURRENT CONSTRUCTION)
11	CONTROL BOX ELECTRICAL COMPONENTS (CURRENT CONSTRUCTION)
13	MOTOR AND PUMP
15	MOTOR (PRIOR TO AM14 SERIAL NO. 23-1037-280)
17	MOTOR (GE) (AM14 USED AFTER SERIAL NO. 23-1037-280)
19	LOWER WASH ARM
21	UPPER WASH ARM
23	OUTSIDE RINSE PIPING (EARLIER PREVIOUS CONSTRUCTION) (ML-32614, ML-32615, & ML-110025)
25	OUTSIDE RINSE PIPING (PREVIOUS CONSTRUCTION) (ML-32614, ML-32615, & ML-110025)
27	OUTSIDE RINSE PIPING (CURRENT CONSTRUCTION) (ML-32614, ML-32615, & ML-110025)
29	BOOSTER AND PIPING (ML-32614, ML-32615, & ML-110025)
31	BOOSTER TANK (ML-110976 & ML-110977)
32	OUTSIDE RINSE PIPING W/BOOSTER (ML-110976 & ML-110977)
33	OUTSIDE RINSE PIPING W/O BOOSTER (ML-110976 & ML-110977)
34	DOOR (STRAIGHT-THRU)
35	DOOR AM14C (CORNER)

- 37 DOOR INTERLOCK
- 38 DOOR LIFT AM14 & 14P (STRAIGHT-THRU)
- 39 DOOR LIFT AM14C (CORNER)
- 40 INSIDE RINSE PIPING
- 41 STRAINER AND DRAIN
- 42 LOW WATER PROTECTION & HEAT BOX
(STEAM & ELECTRIC HEAT)
- 43 LOW WATER PROTECTION &
TRANSFORMER BOX (GAS HEAT)
- 44 GAS HEAT CONTROL BOX
- 45 ELECTRIC HEAT
- 46 GAS HEAT COMPONENTS
(CURRENT CONSTRUCTION)
- 49 GAS HEAT IMMERSION TUBE
SHROUD AND FLUE
- 50 GAS BURNER (PREVIOUS CONSTRUCTION)
- 53 FLUE AND IGNITER CONTROL (GAS HEAT)
(PREVIOUS CONSTRUCTION)
- 55 STEAM INJECTOR
(ML-32614, ML-32615, & ML-110025)
- 57 STEAM COIL PIPING
(ML-32614, ML-32615, & ML-110025)
- 58 STEAM COILS
(ML-32614, ML-32615, & ML-110025)
- 59 TRACK UNIT
- 61 VENT FAN CONTROL
(PREVIOUS CONSTRUCTION)
- 63 MISCELLANEOUS
- 64 DISH RACKS



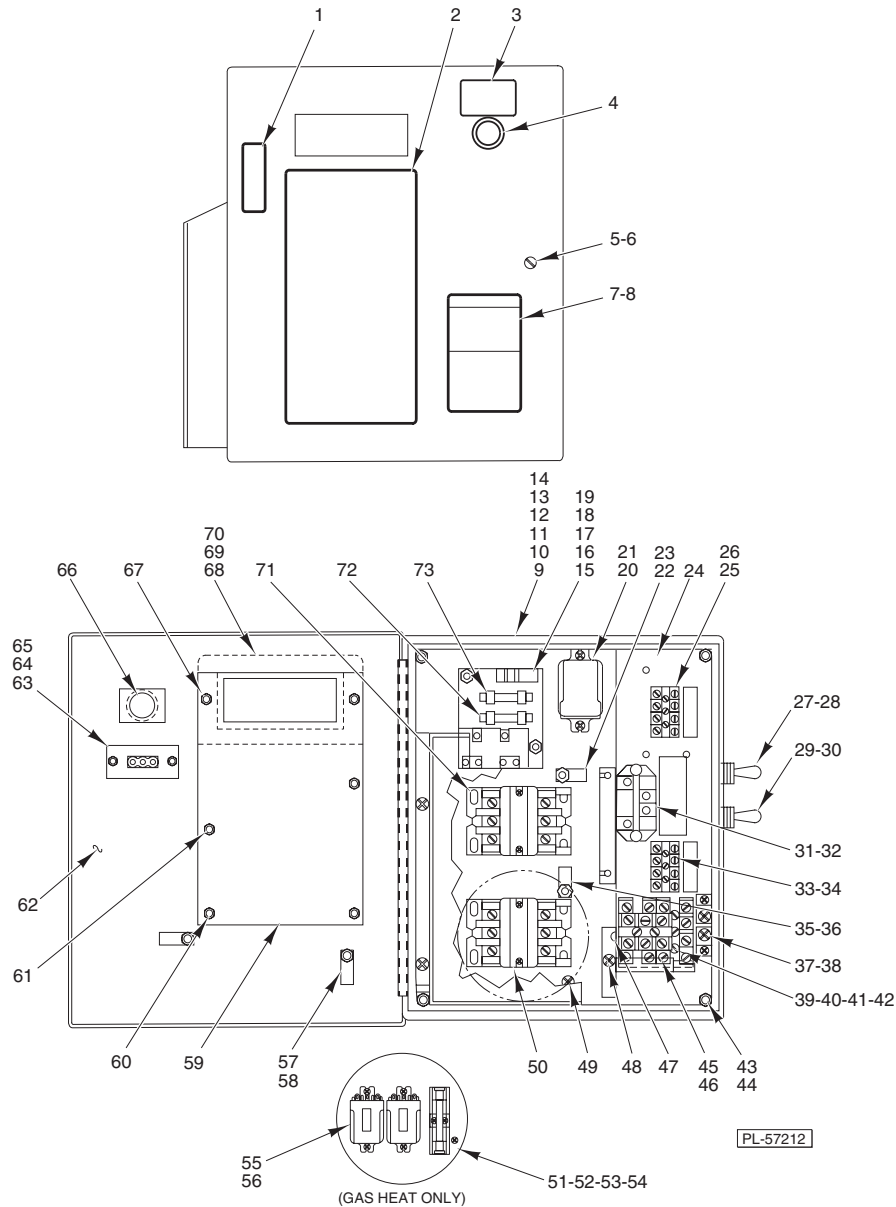
PL-52954

**CONTROL BOX (W/PLASTIC LID)
(ML-32614, ML-32615, & ML-110025)**

ILLUS.	PART NO.	NAME OF PART	AMT.
PL-52954			
1	00-289089	Label – Switch	1
2	00-120872-00003	Switch – Operator’s Select	1
3	00-112068	Gasket – Control Box Lid	1
4	00-475007-00001	Lid & Gasket Assy. (Incls. Items 1, 3, 6, 7, 13, 53, 54, 55, 85, 90, & 91)	1
5	00-475007-00002	Lid & Gasket Assy. (W/Booster) (Incls. Items 1, 3, 6, 7, 13, 53, 54, 55, 85, 90, & 91)..	1
6	SD-012-30	Self-Tapping Screw 6-32 x 5/16 Phil. Pan Hd., Type T	4
7	00-289087	Retainer – Display	1
8	SD-012-04	Self-Tapping Screw 8-32 x 3/8 Phil. Truss Hd., Type T	4
9	FE-009-26	Fuse – Glass (250 V., 1.5 Amp.) (Type AGC)	2
10	00-078752-00010	Clamp – Retaining	1
11	WL-006-07	Lockwasher #10 Medium	1
12	SC-066-22	Mach. Screw 10-32 x 3/8 Phil. Truss Hd.	1
13	00-289129	Shield – Static	1
14	00-749670	Board – Control Assy. (AM14)	1
15	SC-066-22	Mach. Screw 10-32 x 3/8 Phil. Truss Hd.	2
16	00-078752-00010	Clamp – Retaining	1
17	SD-012-04	Self-Tapping Screw 8-32 x 3/8 Phil. Truss Hd., Type T	1
18	00-078752-00004	Retainer (7/16 In.)	1
19	SD-012-04	Self-Tapping Screw 8-32 x 3/8 Phil. Truss Hd., Type T	1
20	SD-009-04	Self-Tapping Screw 6-32 x 3/4 Phil. Pan Hd., Type F	2
21	00-294854	Reed Mounting Board Assy.	1
22	SD-012-04	Self-Tapping Screw 8-32 x 3/8 Phil. Truss Hd., Type T	2
23	00-078752-00009	Clamp – Cable	1
24	SD-008-25	Self-Tapping Screw 10-16 x 1/2 Phil. Pan Hd., Type B	1
25	00-294488	Board – Detergent/Rings Feeder	1
26	FE-021-11	Fuse (5 Amp.)	2
27	SD-008-18	Self-Tapping Screw 8-18 x 3/8 Phil. Bndg. Hd., Type B	3
28	00-078752-00010	Clamp – Retaining	1
29	SD-008-25	Self-Tapping Screw 10-16 x 1/2 Phil. Pan Hd., Type B	1
30	00-118544-00001	Lug – Solderless	1
31	SD-008-25	Self-Tapping Screw 10-16 x 1/2 Phil. Pan Hd., Type B	1
32	WL-007-12	Lockwasher #10 External Shakeproof	1
33	00-119244	Cap & Stud Assy.	2
34	00-119254	Retainer – Cap & Stud	2
35	00-067500-00031	O-Ring	2
36	WL-006-17	Lockwasher 1/4 Medium	2

**CONTROL BOX (W/PLASTIC LID)
(ML-32614, ML-32615, & ML-110025)**

ILLUS.	PART NO.	NAME OF PART	AMT.
PL-52954			
37	NS-015-01	Nut 1/4-20 Hex (SST)	2
38	00-294325-003-1	Block – Terminal	1
39	SD-029-11	Self-Tapping Screw 6-32 x 1 Phil. Pan Hd., Type F	2
40	00-294503	Barrier – Field Wiring	1
41	SD-008-25	Self-Tapping Screw 10-16 x 1/2 Phil. Pan Hd., Type B	2
42	SD-008-18	Self-Tapping Screw 8-18 x 3/8 Phil. Bndg. Hd., Type B (Cable Harness Grd.)	1
43	00-294502	Barrier – Contactor	1
44	00-087713-065-1	Contactor – Magnetic (3 Pole) (Gas or Electric Heat)	1
45	SD-008-25	Self-Tapping Screw 10-16 x 1/2 Phil. Pan Hd., Type B	2
46	00-294436-00002	Fuse Block (Gas Heat)	1
47	FE-015-01	Fuse (1.5 Amp., 100-120 V. & 200-240 V.) (Gas Heat)	1
48	FE-022-74	Fuse (0.6 Amp., 380-460 V.) (Gas Heat)	1
49	SD-019-31	Self-Tapping Screw 8-18 x 1/2 Phil. Pan Hd., Type B	2
50	00-087714-007-1	Relay – D.P.D.T. 24 VAC (Gas Heat)	2
51	SD-008-18	Self-Tapping Screw 8-18 x 3/8 Phil. Bndg. Hd., Type B	4
52	SD-008-25	Self-Tapping Screw 10-16 x 1/2 Phil. Pan Hd., Type B	2
53	00-112016	Retainer – Captive Screw	4
54	00-112129	Screw – Captive	4
55	00-112169	Spacer – Lid	4
56	00-078752-00001	Clamp – Retaining	1
57	WL-006-07	Lockwasher #10 Medium	1
58	NS-011-18	Mach. Nut 10-24 Hex (SST)	1
59	00-087713-065-1	Contactor – Magnetic (3 Pole) (Electric Heat)	1
60	SD-008-25	Self-Tapping Screw 10-16 x 1/2 Phil. Pan Hd., Type B	2
61	00-087711-147-1	Switch – Toggle	1
62	WL-008-32	Lockwasher 1/2 Internal Shakeproof	1
63	00-087711-180-1	Switch – Toggle (D.P.D.T.) (Keyway Must be Located on Top of Switch)	1
64	WL-008-32	Lockwasher 1/2 Internal Shakeproof	1
65	00-288702	Control Box (RH Controls)	1
66	00-288702-00004	Control Box (LH Controls) (Electric & Steam Heat)	1
67	00-473512	Control Box (LH Gas Heat)	1
68	SC-071-11	Mach. Screw 10-24 x 3/8 Phil. Truss Hd.	4
69	WL-007-12	Lockwasher #10 External Shakeproof	4
70	00-294548-00001	Transformer & Fuse Board (100-120/200-230 V., 60 Hz., 1 Ph.) (Incls. Items 76 thru 79)	1
71	00-294548-00002	Transformer & Fuse Board (200-230/400-460 V., 60 Hz., 3 Ph.) (Incls. Items 76 thru 79)	1
72	00-294548-00003	Transformer & Fuse Board (115 & 220 V., 50 Hz., 1 Ph.) (Incls. Items 76 thru 79)	1
73	00-294548-00004	Transformer & Fuse Board (200-240/380 V., 50 Hz., 3 Ph.) (Incls. Items 76 thru 79)	1
74	SD-008-25	Self-Tapping Screw 10-16 x 1/2 Phil. Pan Hd., Type B	2
75	FE-021-19	Fuse (250 V., 3.2 Amp.)	2
76	00-294489	Fuse Board Assy.	1
77	SC-019-33	Mach. Screw 8-32 x 1/2 Bndg. Hd.	2
78	WL-007-07	Lockwasher #8 External Shakeproof	2
79	NS-009-12	Mach. Nut 8-32 Hex	2
80	00-087714-007-1	Relay (24 VAC) (D.P.D.T.) (Steam/Electric Heat)	1
81	SD-008-18	Self-Tapping Screw 8-18 x 3/8 Phil. Bndg. Hd., Type B	2
82	SC-041-11	Cap Screw 5/16-18 x 3/4 Hex Hd. (SST)	2
83	WL-006-23	Lockwasher 5/16 Medium (SST)	2
84	NS-015-11	Nut 5/16-18 Hex (SST)	2
85	00-289088	Label – Data	1
86	00-289360	Pin – Control Box	1
87	WL-006-16	Lockwasher 1/4 Light (RH Controls)	2
88	NS-015-01	Nut 1/4-20 Hex (RH Controls)	2
89	00-119114	Bracket – Control Box (RH Controls)	1
90	00-289090	Label – Switch	1
91	00-289060	Water Temperature Display Assy.	1
92	00-162477	Plate – Base	1
93	00-438131-00042	Label – Caution/Warning	1
	00-294325-00006	Jumper – Terminal Block (110-120/200-230 V. 60 Hz., 115/220 V. 50 Hz.) (1 Ph.) (Use with Item 38)	1
	00-293587-00001	Wire Harness (Used with Item 14)	1
	00-160746-00001	Terminal – Insulated (Used with Item 80)	2
	00-294334	Shunt Connector (Pkg. of 10)	1
	00-473511	Bracket – Control Box (LH)	1



**CONTROL BOX (W/METAL LID)
(PREVIOUS CONSTRUCTION)**

ILLUS.	PART NO.	NAME OF PART	AMT.
PL-57212			
1	00-289090	Label – Switch	1
2	00-289088	Label – Data	1
3	00-748965	Label – Switch	1
4	00-475638-00003	Button – Push (Flush)	1
5	00-112129	Screw – Captive	1
6	00-112016	Retainer – Captive Screw	1
7	00-438131-00042	Label – Warning (W/O Booster)	1
8	00-438131-00060	Label – Warning (W/Booster)	1
9	00-475213-00001	Box – Control (W/Lid) (RH) (Gas Heat)	1
10	00-475213-00002	Box – Control (W/Lid) (LH) (Gas Heat)	1
11	00-475213-00003	Box – Control (W/Lid) (LH) (90 Deg. Mtd.) (Gas Heat)	1
12	00-475213-00007	Box – Control (W/Lid) (RH) (Electric Heat)	1
13	00-475213-00008	Box – Control (W/Lid) (LH) (Electric Heat)	1
14	00-475213-00009	Box – Control (W/Lid) (LH) (90 Deg. Mtd.) (Electric Heat)	1

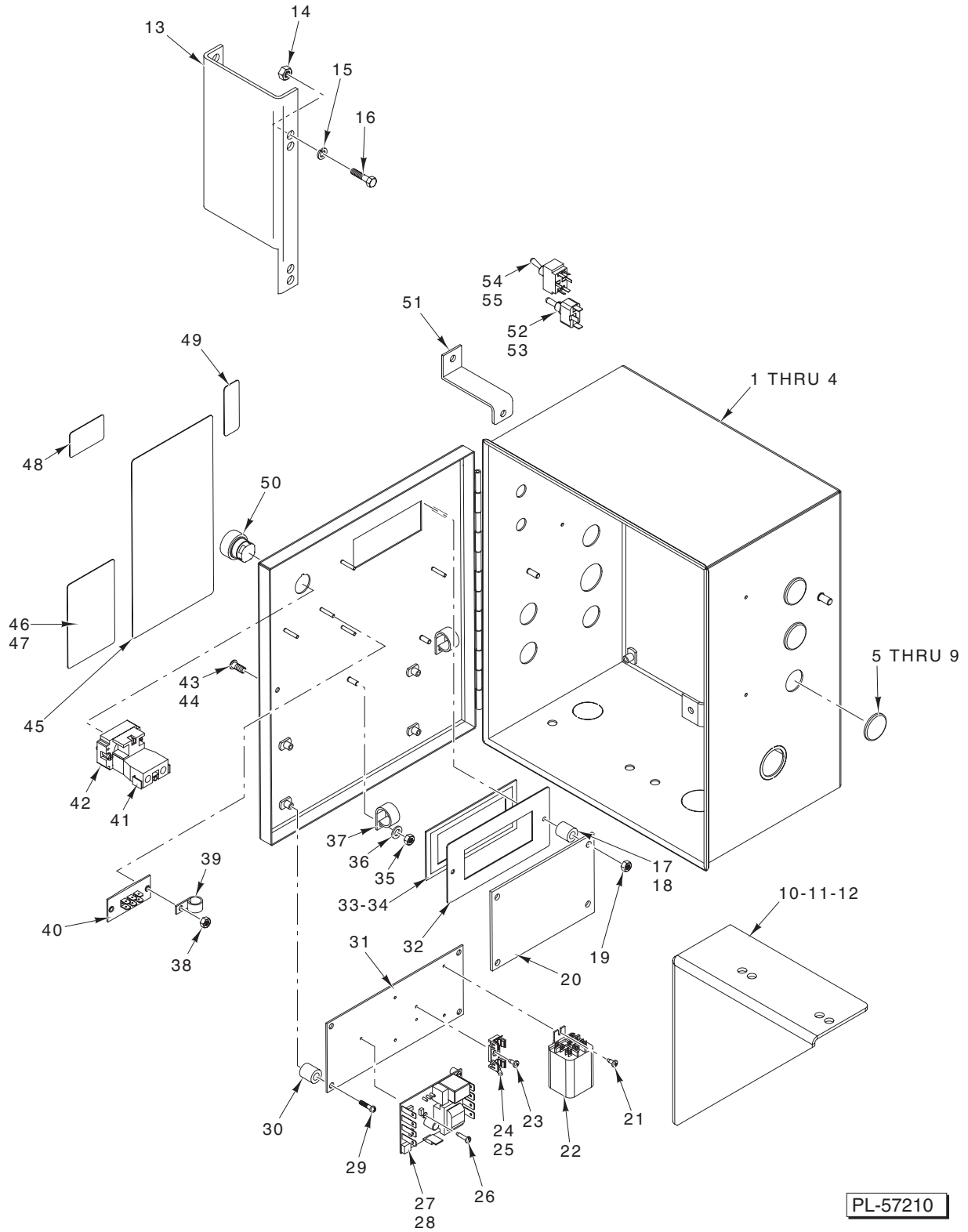
CONTROL BOX (W/METAL LID) (PREVIOUS CONSTRUCTION)

ILLUS. PL-57212	PART NO.	NAME OF PART	AMT.
15	00-294548-00001	Transformer & Fuse Board (120/60/1) (208-240/60/1)	1
16	00-294548-00003	Transformer & Fuse Board (100-120/50/1) (220-240/50/1)	1
17	00-294548-00002	Transformer & Fuse Board Assy. (208-240/60/3) (480/60/3)	1
18	00-294548-00004	Transformer & Fuse Board Assy. (200-240/50/3) (380-415/50/3)	1
19	SD-008-25	Self-Tapping Screw 10-16 x 1/2 Phil. Pan Hd., Type B	2
20	00-087714-007-1	Relay (24 VAC) (D.P.D.T.) (Steam/Electric Heat)	1
21	SD-008-18	Self-Tapping Screw 8-18 x 3/8 Phil. Bndg. Hd., Type B	2
22	00-294677-00003	Clamp - Wire (3/4 I.D.)	1
23	SD-008-25	Self-Tapping Screw 10-16 x 1/2 Phil. Pan Hd., Type B	1
24	00-476764	Plate - Base	1
25	00-294325-013-4	Block - Terminal (Under 250 Volts)	1
26	SD-019-29	Self-Tapping Screw 6-20 x 1/2 Phil Pan Hd., Type B	2
27	00-087711-180-1	Switch - Toggle (D.P.D.T.) (Keyway Must be Located on Top of Switch)	1
28	WL-008-32	Lockwasher 1/2 Internal	1
29	00-087711-147-1	Switch - Wash/Rinse (Keyway Must be Located on Bottom of Switch)	1
30	WL-008-32	Lockwasher 1/2 Internal	1
31	00-087714-055-1	Relay (Vent Fan Control)	1
32	SD-008-18	Self-Tapping Screw 8-18 x 3/8 Phil. Bndg. Hd., Type B	2
33	00-294325-013-4	Block - Terminal (Under 250 Volts)	1
34	SD-019-29	Self-Tapping Screw 6-20 x 1/2 Phil. Pan Hd., Type B	2
35	00-294677-00003	Clamp - Wire (3/4 I.D.)	1
36	SD-008-25	Self-Tapping Screw 10-16 x 1/2 Phil. Pan Hd., Type B	1
37	00-118544-00001	Lug - Solderless	2
38	SD-034-59	Self-Tapping Screw 10-32 x 3/8 Phil. Pan Hd., Type T	2
39	00-294325-003-1	Block - Terminal (Initial Production Only)	1
40	00-294325-015-1	Block - Terminal (Used in Production Since 4/01)	2
41	00-294325-00006	Jumper - Terminal Block (1 Ph. Only)	1
42	SD-029-11	Self-Tapping Screw 6-32 x 1 Phil. Pan Hd., Type F	2
43	SC-071-11	Mach. Screw 10-24 x 3/8 Phil. Truss Hd.	4
44	WL-007-12	Lockwasher #10 External Shakeproof	4
45	00-119031	Terminal Block	1
46	SD-008-25	Self-Tapping Screw 10-16 x 1/2 Phil. Pan Hd., Type B	4
47	00-475256	Barrier - Field Wiring	1
48	SD-008-25	Self-Tapping Screw 10-16 x 1/2 Phil. Pan Hd., Type B	7
49	SD-034-59	Self-Tapping Screw 10-32 x 3/8 Phil. Pan Hd., Type T	7
50	00-087713-065-1	Contactactor - Magnetic (3 Pole) (Electric Heat)	2
51	FE-015-01	Fuse (1.5 Amp., 100-120 V.) (Gas Heat)	1
52	FE-022-86	Fuse (0.6 Amp., 500 V.) (Gas Heat)	1
53	00-294436-00002	Fuse Block (3 Pole) (Gas Heat)	1
54	SD-019-31	Self-Tapping Screw 8-18 x 1/2 Phil. Pan Hd., Type B	2
55	00-087714-007-1	Relay (24 VAC) (D.P.D.T.) (Steam/Electric Heat)	2
56	SD-008-18	Self-Tapping Screw 8-18 x 3/8 Phil. Bndg. Hd., Type B	4
57	00-294677-00003	Clamp - Wire (3/4 I.D.)	2
58	NS-031-15	Stop Nut - Special 10-24 Hex (SST)	2
59	00-749825	Board - Control Assy. (AM14)	1
60	00-118349-00005	Standoff - Reed Board	4
61	NS-031-50	Stop Nut 6-32 Hex (SST)	4
62	00-526454-00002	Foam Tape	1
63	00-294325-00009	Terminal Board	1
64	NS-031-50	Stop Nut 6-32 Hex (SST)	2
65	00-118349-00003	Spacer - Control Panel	2
66	00-475934	Block - Contact (Push-On Maintain)	1
67	00-118349-00003	Spacer - Control Panel	2
68	00-474669	Frame - Display	1
69	00-474670	Retainer - Display	1
70	00-289060	Water Temperature Display Assy.	1
71	00-087713-065-1	Contactactor - Magnetic (3 Pole) (Electric Heat)	1
72	FE-009-26	Fuse - Glass (250 V., 1.5 Amp.) (Type AGC)	1
73	FE-021-19	Fuse (250 V., 3.2 Amp.)	1
	00-476772	Board Assy. - Thermistor Simulator	1

Note:

Serial Number 23-1030-220

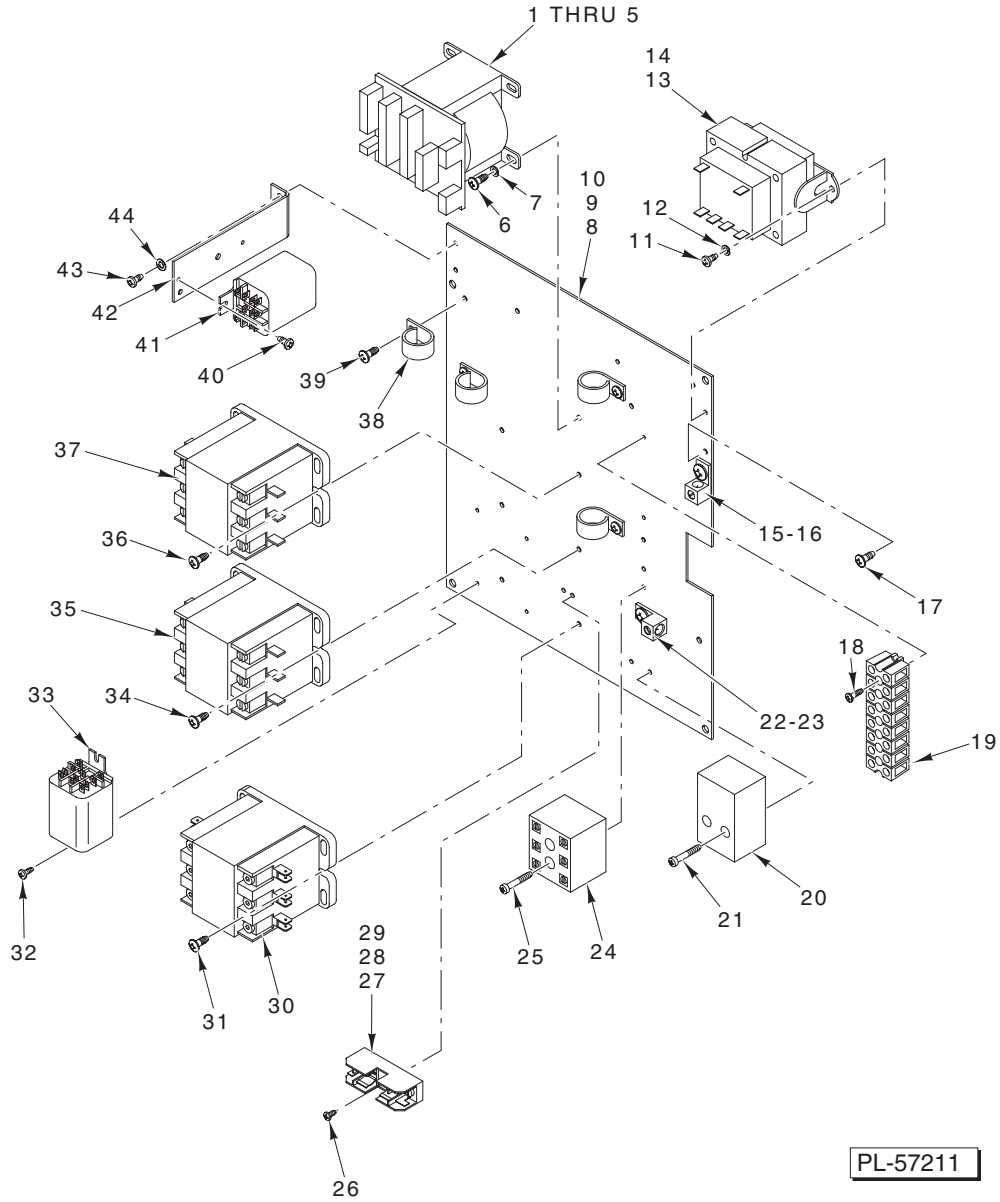
First Machines Having Circuit Breaker Option



**CONTROL BOX
(CURRENT CONSTRUCTION)**

CONTROL BOX (CURRENT CONSTRUCTION)

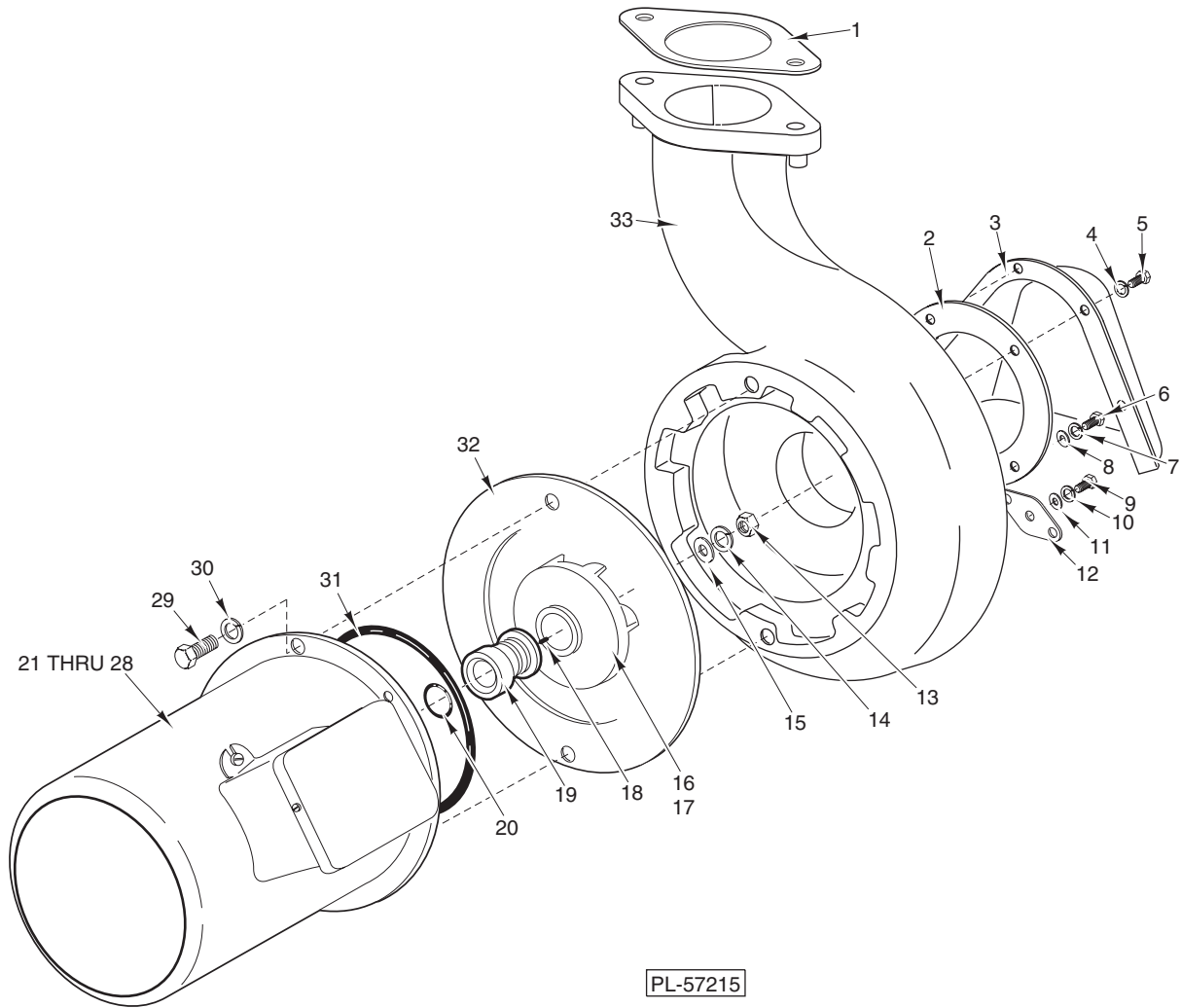
ILLUS. PL-57210	PART NO.	NAME OF PART	AMT.
1	00-749634-00001	Weldment – Box & Lid (ML-110976 & ML-110977).....	1
2	SC-041-11	Cap Screw ⁵ / ₁₆ -18 x ³ / ₄ Hex Hd. (SST)	4
3	WS-017-08	Washer	4
4	NS-036-19	Stop Nut ⁵ / ₁₆ -18 Hex	4
5	00-119244	Cap & Stud Assy.	3
6	00-119254	Retainer – Cap & Stud	3
7	00-767500-00031	O-Ring	3
8	WL-006-17	Lockwasher ¹ / ₄ Medium	3
9	NS-015-01	Nut ¹ / ₄ – 20 Hex (SST)	3
10	00-749873	Bracket – Control Box	1
11	SC-041-11	Cap Screw ⁵ / ₁₆ -18 x ³ / ₄ Hex Hd. (SST)	2
12	NS-036-19	Stop Nut ⁵ / ₁₆ -18 Hex	2
13	00-748054	Bracket – Gas Heat (LH)	1
14	NS-015-11	Nut ⁵ / ₁₆ -18 Hex	2
15	WL-006-23	Lockwasher ⁵ / ₁₆ Medium (SST)	2
16	SC-041-11	Cap Screw ⁵ / ₁₆ -18 x ³ / ₄ Hex Hd. (SST)	2
17	00-118349-00006	Standoff – Reed Board (⁹ / ₁₆)	2
18	00-118349-00007	Standoff – Reed Board (³ / ₈)	2
19	NS-031-50	Stop Nut 6-32 Hex (SST)	4
20	00-749825	Board – Control Assy.	1
21	SD-008-17	Self-Tapping Screw 6-20 x ³ / ₈ Phil. Bndg. Hd., Type B (Gas Heat/Vent Fan Control)....	2
22	00-087714-020-1	Relay (3 Pole) (Vent Fan Control)	1
23	SD-008-17	Self-Tapping Screw 6-20 x ³ / ₈ Phil. Bndg. Hd., Type B (Electric Booster)	1
24	00-294436-00003	Block – Fuse (Electric Booster)	1
25	FE-022-28	Fuse (0.5 Amp., 250 V.) (Electric Booster)	1
26	SD-038-02	Self-Tapping Screw 6-20 x ⁵ / ₈ Phil. Pan Hd., Type B (Electric Booster)	3
27	00-475458-00001	Board Assy. – Temperature Control (120-200 Deg. F) (Electric Booster)	1
28	00-476653	Spacer – Circuit Board #6 x ⁵ / ₁₆ (Electric Booster)	4
29	SC-071-11	Mach. Screw 10-24 x ³ / ₈ Phil. Truss Hd.	4
30	00-118349-00006	Standoff – Reed Board (⁹ / ₁₆)	4
31	00-749636	Plate – Base Lid (Electric Booster or Vent Fan Control)	1
32	00-474669	Frame – Display	1
33	00-289060	Water Temperature Display Assy.	1
34	00-474670	Retainer – Display	1
35	NS-031-50	Stop Nut – Special 6-32 Hex (SST)	3
36	WS-023-01	Washer	2
37	00-294677-00003	Clamp – Wire (³ / ₄ I.D.)	3
38	NS-031-50	Stop Nut 6-32 Hex (SST)	2
39	00-294677-00002	Clamp – Wire (¹ / ₂ I.D.)	1
40	00-294325-00009	Terminal Board Assy.	1
41	00-087711-286-1	Block – Switch (Electric Booster)	1
42	00-475934	Block – Contact (Push-On-Maintain)	1
43	00-112016	Retainer – Screw	1
44	00-112129	Screw – Captive	1
45	00-289088	Label – Data (ML-110976 & ML-110977)	1
46	00-438131-00060	Label – Warning (Electric Heat W/Booster)	1
47	00-438131-00042	Label – Warning (W/O Booster or Gas Heat)	1
48	00-748965	Label – Switch	1
49	00-289090	Label – Switch	1
50	00-475638-00001	Button – Push (Flush)	1
51	00-749909	Bracket – Control Box	1
52	00-087711-147-1	Switch – Wash/Rinse (Keyway Must be Located on Bottom of Switch)	1
53	WL-008-32	Lockwasher ¹ / ₂ Internal Shakeproof	1
54	00-087711-180-1	Switch – Toggle (D.P.D.T.) (Keyway Must be Located on Top of Switch)	1
55	WL-008-32	Lockwasher ¹ / ₂ Internal Shakeproof	1
	00-749887-00001	Cable Assy. – Rinse Thermistor	1
	00-749853-00001	Harness – Wiring, HT Therm. RH	1



**CONTROL BOX ELECTRICAL COMPONENTS
(CURRENT CONSTRUCTION)**

CONTROL BOX ELECTRICAL COMPONENTS (CURRENT CONSTRUCTION)

ILLUS. PL-57211	PART NO.	NAME OF PART	AMT.
1	00-422905-00047	Angle – Hinge Pin (Use with Service Side Door).....	1
2	00-294548-00002	Transformer (200-230 V. & 400-460 V., 60 Hz., 3 Ph.).....	1
3	00-294548-00004	Transformer (200-415 V., 50 Hz., 3 Ph.).....	1
4	FE-021-19	Fuse (3.2 Amp., 250 V.).....	1
5	FE-009-26	Fuse (1.5 Amp., 250 V.).....	1
6	SD-008-25	Self-Tapping Screw 10-16 x 1/2 Phil. Pan Hd., Type B.....	2
7	WL-007-12	Lockwasher #10 External.....	2
8	00-749630	Plate – Base.....	1
9	SC-071-11	Mach. Screw 10-24 x 3/8 Phil. Truss Hd.....	4
10	WL-007-12	Lockwasher #10 External Shakeproof.....	4
11	SD-008-18	Self-Tapping Screw 8-18 x 3/8 Phil. Bndg. Hd., Type B (Electric Booster).....	2
12	WL-014-05	Lockwasher #8 External.....	2
13	00-294500-00033	Transformer (60 VA)(208/240/60/1)(208/240/60/3)(480/60/3)(200/50/3)(Electric Booster) ...	1
14	00-294500-033-2	Transformer (60 VA)(380-415/50/3) (Electric Booster).....	1
15	00-116544-00002	Lug – Grounding.....	2
16	SD-035-77	Self-Tapping Screw Phil. Pan Hd., Type TT.....	2
17	SD-008-25	Self-Tapping Screw 10-16 x 1/2 Phil. Pan Hd., Type B (Electric Booster).....	1
18	SD-008-17	Self-Tapping Screw 6-20 x 3/8 Phil. Bndg. Hd., Type B.....	2
19	00-294325-013-6	Block – Terminal.....	1
20	00-294325-015-1	Block – Terminal (1 Ph.) (Electric Booster).....	1
21	SD-037-21	Self-Tapping Screw 8-32 x 1 Phil. Pan Hd., Type F (1 Ph.) (Electric Booster).....	2
22	00-118544-00002	Lug – Grounding (Electric Booster).....	1
23	SD-035-77	Self-Tapping Screw 1/4-20 x 3/8 Phil. Pan Hd., Type TT (Electric Booster).....	1
24	00-294325-015-1	Block – Terminal.....	1
25	SD-037-21	Self-Tapping Screw 8-32 x 1 Phil. Hd., Type F.....	2
26	SD-008-18	Self-Tapping Screw 8-18 x 3/8 Phil. Bndg. Hd., Type B (Gas Heat).....	2
27	00-294436-00002	Block – Fuse (Gas Heat).....	1
28	FE-015-01	Fuse (1.5 Amp., 200-240 V.) (Gas Heat).....	1
29	FE-022-86	Fuse (0.8 Amp., 380-480 V.) (Gas Heat).....	1
30	00-087713-041-2	Contactactor (40 Amp., 120 V.) (3 Pole) (Electric Booster).....	1
31	SD-008-25	Self-Tapping Screw 10-16 x 1/2 Phil. Pan Hd., Type B (Electric Booster).....	2
32	SD-008-17	Self-Tapping Screw 6-20 x 3/8 Phil. Bndg. Hd., Type B (Gas Heat).....	2
33	00-087714-020-1	Relay (3 Pole) (Gas Heat).....	1
34	SD-008-25	Self-Tapping Screw 10-16 x 1/2 Phil. Pan Hd., Type B (Electric Heat).....	2
35	00-087713-065-1	Contactactor – Magnetic (3 Pole) (Electric Heat).....	1
36	SD-008-25	Self-Tapping Screw 10-16 x 1/2 Phil. Pan Hd., Type B.....	2
37	00-087713-065-1	Contactactor – Magnetic (3 Pole).....	1
38	00-294677-00003	Clamp – Wire (3/4 I.D.).....	4
39	SD-008-25	Self-Tapping Screw 10-16 x 1/2 Phil. Pan Hd., Type B.....	4
40	SD-008-17	Self-Tapping Screw 6-20 x 3/8 Phil. Bndg. Hd., Type B.....	2
41	00-087714-020-1	Relay (3 Pole).....	1
42	00-437102	Bracket – Relay Mounting.....	1
43	SD-008-18	Self-Tapping Screw 8-18 x 3/8 Phil. Bndg. Hd., Type B.....	2
44	WL-014-05	Lockwasher #8 External Shakeproof.....	2
	00-476772	Board Assy. – Thermistor Simulator.....	1



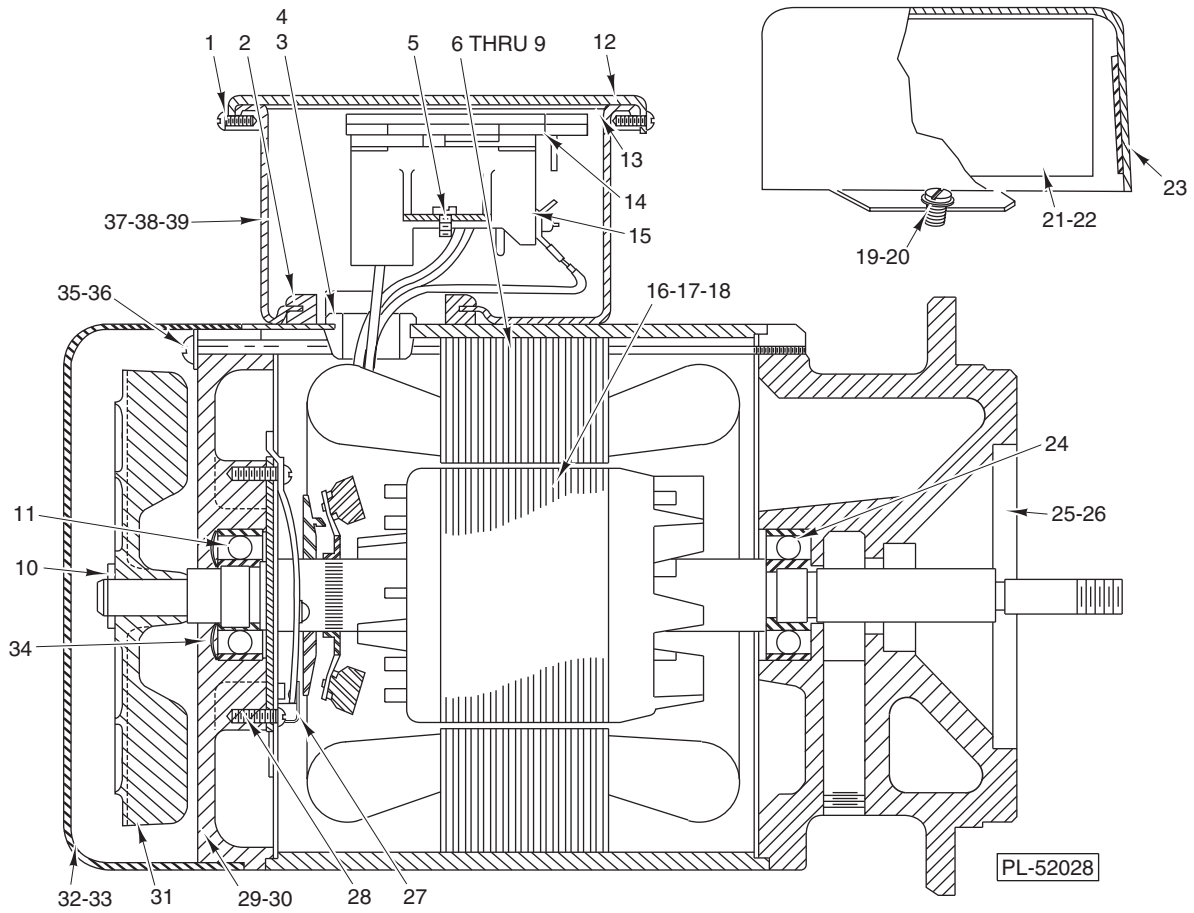
MOTOR AND PUMP

MOTOR AND PUMP

ILLUS. PL-57215	PART NO.	NAME OF PART	AMT.
1	00-119054	Gasket – Pump Discharge	1
2	00-119050	Gasket – Pump Intake	1
3	00-118960	Shroud – Pump Intake	1
4	WL-006-23	Lockwasher ⁵ / ₁₆ Medium (SST)	4
5	SC-041-11	Cap Screw ⁵ / ₁₆ -18 x ³ / ₄ Hex Hd. (SST)	4
6	SC-041-11	Cap Screw ⁵ / ₁₆ -18 x ³ / ₄ Hex Hd. (SST)	2
7	WL-006-23	Lockwasher ⁵ / ₁₆ Medium (SST)	2
8	WS-017-08	Washer	2
9	SC-041-05	Cap Screw ¹ / ₄ -20 x ⁵ / ₈ Hex Hd.	2
10	WL-006-17	Lockwasher ¹ / ₄ Medium	2
11	WS-003-48	Washer	2
12	00-119051	Gasket – Pump Drain Hole	1
13	NS-024-06	Acorn Nut ⁷ / ₁₆ -20	1
14	WL-006-32	Lockwasher ⁷ / ₁₆ Light	1
15	WS-021-01	Washer	1
16	00-118968	Impeller (60 Hz.)	1
17	00-121567-00002	Impeller (50 Hz.)	1
18	KW-003-03	Key – Woodruff ¹ / ₈ x ¹ / ₂ Lg.	1
19	00-114696	Shaft Seal Assy. (⁵ / ₈)	1
20	00-067500-00007	O-Ring	1
21	00-293620	Motor – Service (60 Hz., 1 Ph.)	1
22	00-293619	Motor – Service (60 Hz., 3 Ph.)	1
23	00-293618	Motor – Service (50 Hz., 1 Ph.)	1
24	00-293617	Motor – Service (50 Hz., 3 Ph.)	1
*25	00-748519-00001	Motor – (60 Hz., 1 Ph.)	1
*26	00-748519-00003	Motor – (60 Hz., 3 Ph.)	1
*27	00-748519-00004	Motor – (50 Hz., 3 Ph.)	1
28	00-748519-00005	Motor – (575 V. 60 Hz., 3 Ph.)	1
29	SC-041-29	Cap Screw ³ / ₈ -16 x ⁷ / ₈ Hex Hd., Wax Coated Threads	2
30	WL-006-28	Lockwasher ³ / ₈ Medium	2
31	00-067500-00097	O-Ring	1
32	00-277836	Shim Kit (Motor To Pump) 1 Blue (0.005), 1 Brown (0.010) & 1 Yellow (0.020 Thk.) ...	1
33	00-276281	Shell – Pump	1
	00-473249	Screen Weldment – Pump Intake	1
	00-277786-00001	Motor & Impeller Assy. (60 Hz., 1 Ph.) (Incls. Items 13 thru 16, 18 thru 21, & 31)	1
	00-277786-00002	Motor & Impeller Assy. (60 Hz., 3 Ph.) (Incls. Items 13 thru 16, 18, 19, 20, 22, & 31)	1
	00-277786-00003	Motor & Impeller Assy. (50 Hz., 1 Ph.) (Incls. Items 13, 14, 15, 17 thru 20, 23, & 31)	1
	00-277786-00004	Motor & Impeller Assy. (50 Hz., 3 Ph.) (Incls. Items 13, 14, 15, 17 thru 20, 24, & 31)	1
	*00-748518-00001	Motor & Impeller Assy. (60 Hz., 1 Ph.) (Incls. Items 13 thru 20, 25, & 31)	1
	*00-748518-00003	Motor & Impeller Assy. (60 Hz., 3 Ph.) (Incls. Items 13 thru 20, 26, & 31)	1
	*00-748518-00004	Motor & Impeller Assy. (50 Hz., 3 Ph.) (Incls. Items 13 thru 20, 27, & 31)	1
	*00-748518-00007	Motor & Impeller Assy. (575 V., 60 Hz., 3 Ph.) (Incls. Items 13 thru 20, 28, & 31)	1
	00-294505-00001	Wire Harness – Motor Therm. (RH Controls)	1
	00-294523-00001	Wire Harness – Motor Therm. (LH Controls)	1

NOTE: Select shims to obtain .005 to .012 between pump and impeller.

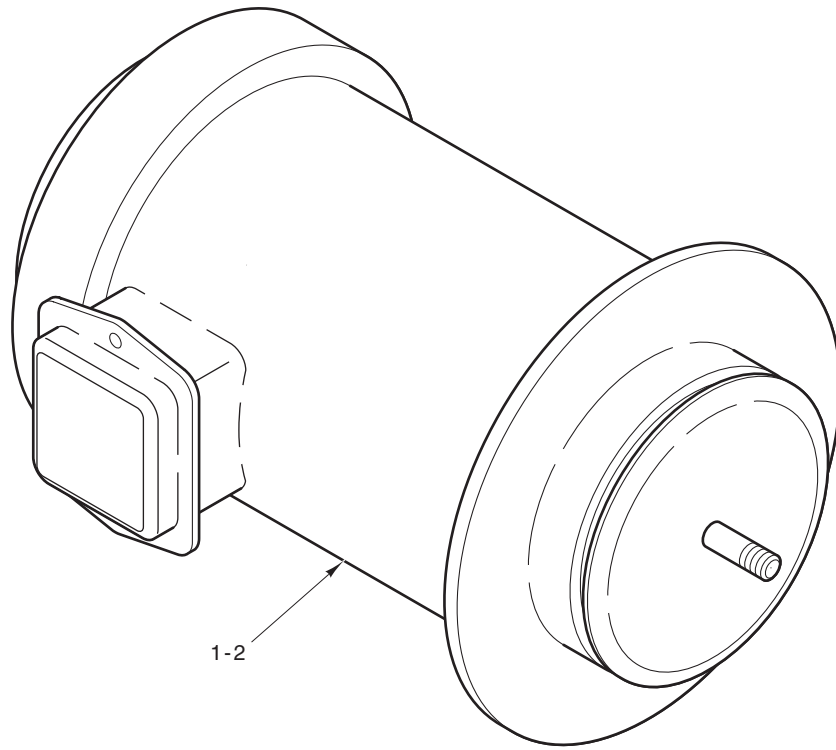
*AM14 Used After Serial No. 23-1037-280 (GE Motor)



MOTOR
(PRIOR TO AM14 SERIAL NO. 23-1037-280)

MOTOR
(PRIOR TO AM14 SERIAL NO. 23-1037-280)

ILLUS. PL-52028	PART NO.	NAME OF PART	AMT.
1	SD-036-51	Self-Tapping Screw 8-32 x $\frac{3}{8}$ Hex Washer Hd., Type T	2
2	00-060395	Grommet.....	1
3	FE-016-02	Bushing – Snap (Field Ring).....	1
4	00-080369	Bushing – Snap (Field Ring).....	1
5	SD-036-51	Self-Tapping Screw 8-32 x $\frac{3}{8}$ Hex Washer Hd., Type T	2
6	00-065477-147-1	Stator Assy. (100-120 V., 60 Hz.).....	1
7	00-065477-147-2	Stator Assy. (115-120 V., 50 Hz.).....	1
8	00-065478-110-1	Stator Assy. (200-230/400-460 V., 60 Hz.)	1
9	00-065478-112-1	Stator Assy. (220-380 V., 50 Hz.).....	1
10	RR-004-17	Retaining Ring	1
11	BB-020-18	Ball Bearing – N.D. #77503	1
12	00-113405	Cover – Terminal Box	1
13	00-114811	Gasket – Terminal Box	1
14	00-113417	Connector – Block Assy.	1
15	00-113552	Terminal Block Base Assy.	1
16	00-022275-00208	Rotor Assy. (100-120 V., 60 Hz.)	1
17	00-022275-00207	Rotor Assy. (115-220 V., 50 Hz.).....	1
18	00-015747-00288	Rotor Assy. (200-230/400-460 V., 60 Hz.) (220-380 V., 50 Hz.)	1
19	SD-015-03	Self-Tapping Screw 10-24 x $\frac{1}{4}$ Pan Hd., Type TT	2
20	WS-002-15	Washer	2
21	00-070487-00006	Capacitor (Motor Start).....	1
22	00-089258	Retainer – Capacitor.....	1
23	00-104725	Capacitor Cover & Insulator Assy.	1
24	BB-020-18	Ball Bearing – N.D. #77503	1
25	00-121191-00001	Bracket – Bearing (Pump End) (60 Hz.)	1
26	00-121191-00002	Bracket – Bearing (Pump End) (50 Hz.)	1
27	00-119858-00002	Switch – Starting (Stationary Part)	1
28	SC-009-49	Mach. Screw 6-32 x $\frac{3}{8}$ Rd. Hd.	2
29	00-114379-00003	Bracket – Bearing (Fan End)	1
30	00-114379-00002	Bracket – Bearing (Fan End)	1
31	00-292466-00001	Fan – Ventilating	1
32	00-077067	Cover – Motor End.....	1
33	SC-009-65	Mach. Screw 8-32 x $\frac{1}{4}$ Rd. Hd.	2
34	SL-002-04	Spring – Loading.....	1
35	SC-081-76	Mach. Screw 10-24 x 7 Rd. Hd.	4
36	WL-008-13	Lockwasher #10 Internal Shakeproof.....	4
37	00-113403	Box – Terminal	1
38	SD-015-27	Self-Tapping Screw 10-24 x $\frac{3}{16}$ Pan Hd., Type TT	2
39	WL-007-12	Lockwasher #10 External Shakeproof	2
	00-111591-00001	Thermistor (Included with Items 6 thru 9)	2

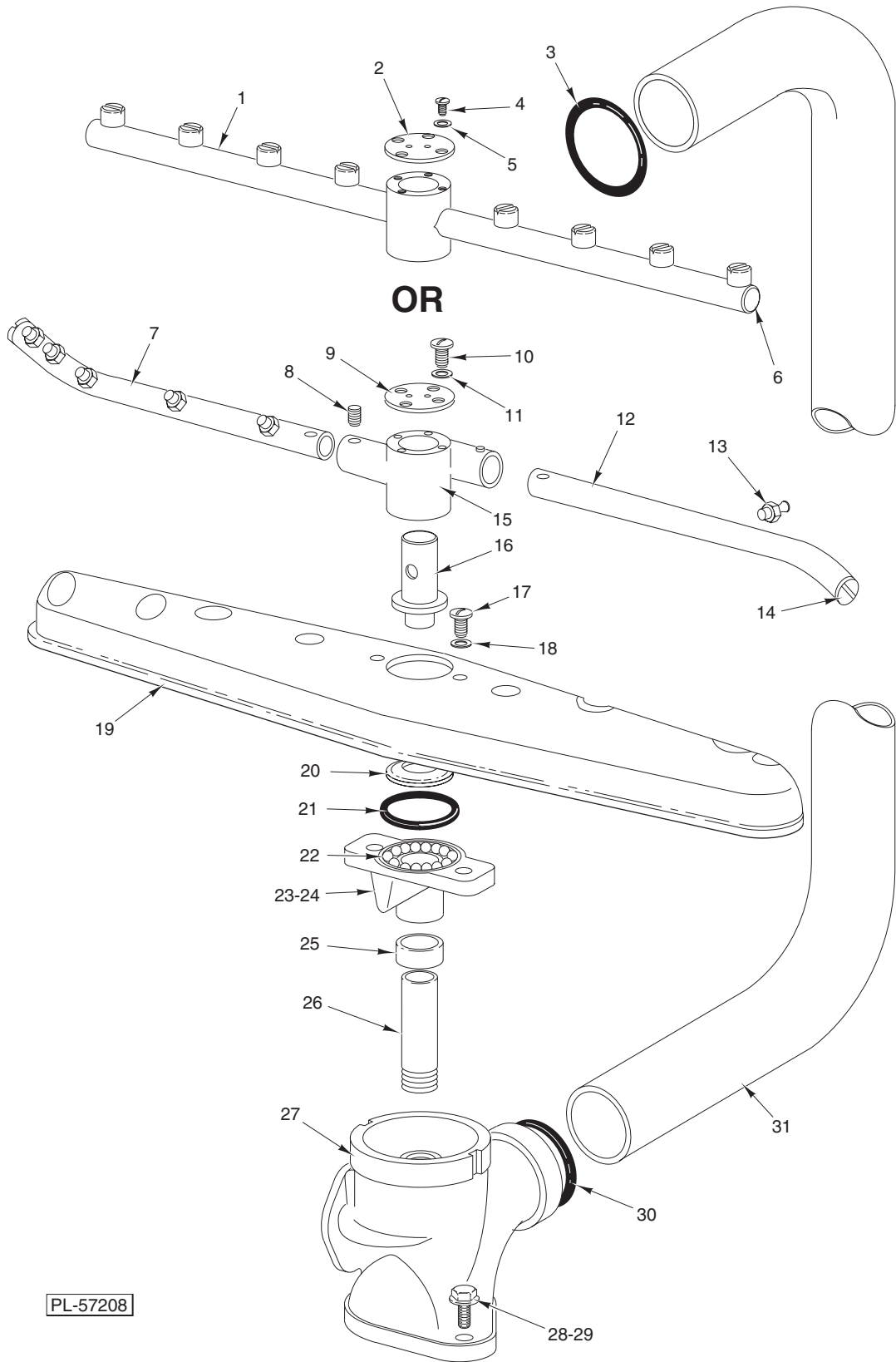


PL-57301

MOTOR (GE)
(AM14 USED AFTER SERIAL NO. 23-1037-280)

MOTOR (GE)
(AM14 USED AFTER SERIAL NO. 23-1037-280)

ILLUS.	PART NO.	NAME OF PART	AMT.
PL-57301			
1	00-892459-00001	Overload – Reset (1 Hp., 1 Ph.)	1
2	00-892459-00005	Overload – Reset (1 Hp., 3 Ph.)	1
3	00-892459-00002	Switch – Start (Not Shown)	1
4	00-892459-00007	Cover – Fan (Not Shown)	1
5	00-892459-00008	Fan Blade & Clip (Not Shown)	1



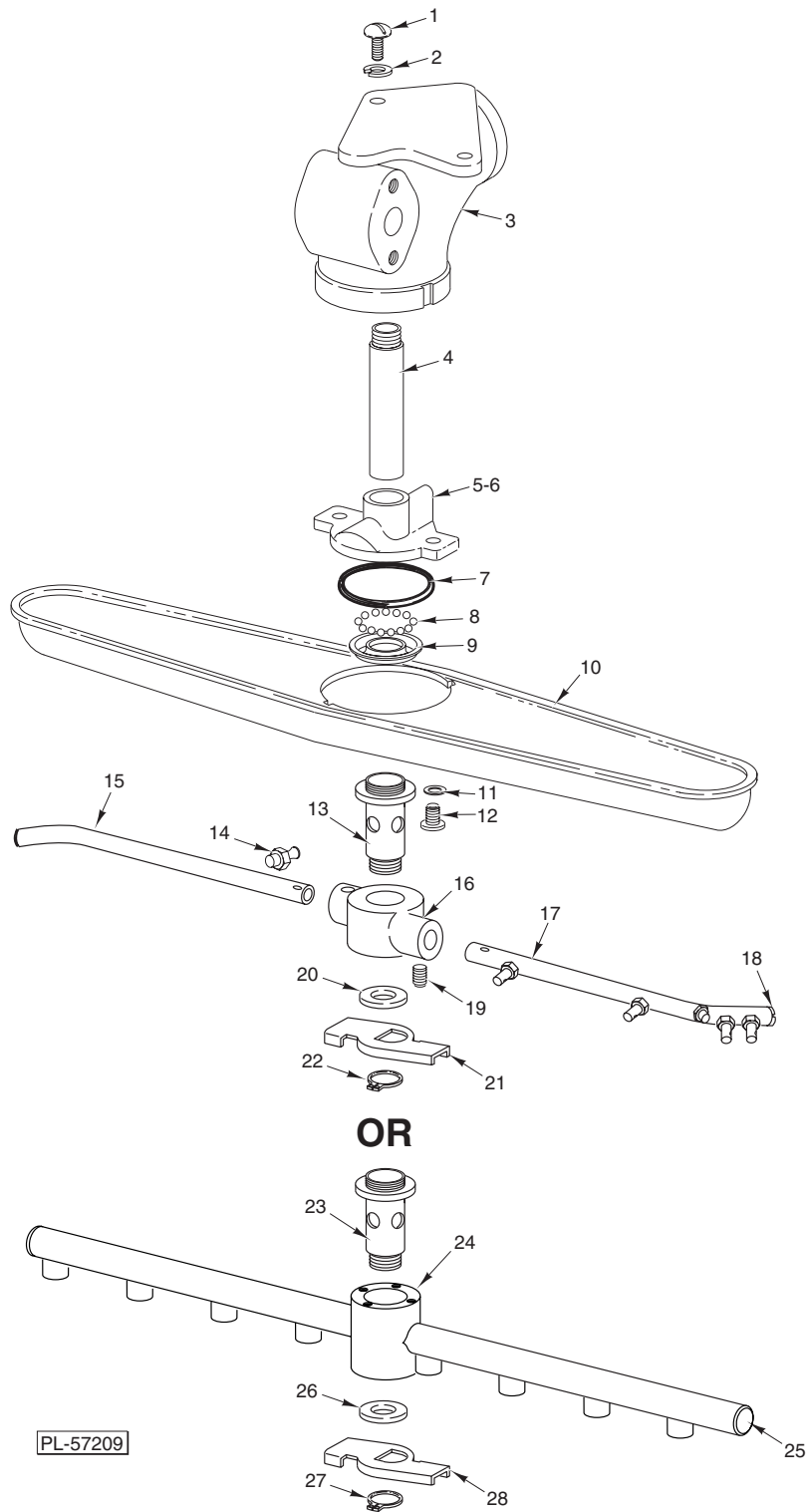
PL-57208

LOWER WASH ARM

LOWER WASH ARM

ILLUS. PL-57208	PART NO.	NAME OF PART	AMT.
1	00-748105	Lower Rinse Arm (Incls. Items 2, 4, & 5)	1
2	00-748282	Plate – Pivot Bearing	1
3	00-067500-00057	O-Ring	1
4	SC-021-14	Mach. Screw 8-32 x 3/8 Rd. Hd., Slotted	4
5	WL-006-01	Lockwasher #8 Helical	4
6	00-474252	Cap – End	2
7	00-122442-00002	Arm – Rinse (5 Nozzle Holes) (Previous Construction)	1
8	SC-110-44	Set Screw 5/16-18 x 3/8 Soc. Hdls., Cone Pt. (Nylon) (Previous Construction)	2
9	00-021137	Plate – Pivot Bearing (Previous Construction)	1
10	SC-021-14	Mach. Screw 8-32 x 3/8 Rd. Hd., Slotted (Previous Construction)	4
11	WL-006-01	Lockwasher #8 (Previous Construction)	4
12	00-122443-00002	Arm – Rinse (4 Nozzle Holes) (Previous Construction)	1
13	00-022731-00003	Nozzle – Rinse (SST) #50 Drill (0.070) (Previous Construction)	9
14	00-122440	Plug – Rinse Arm (Previous Construction)	2
15	00-122633	Body – Lower Rinse Arm (Previous Construction)	1
16	00-286946	Bearing Pin & Washer Assy.	1
17	SC-066-06	Mach. Screw 10-24 x 1/2 Phil. Truss Hd.	2
18	WL-006-07	Lockwasher #10 Medium	2
19	00-287987	Wash Arm & Hub (Incls. Items 17, 18, & 20 thru 23)	1
20	00-286947	Retainer – Ball	1
21	00-067500-00019	O-Ring	1
22	BA-002-40	Ball 1/4 Dia.	13
23	00-286948	Hub	1
24	00-287140	Hub (Service Only)	1
25	00-286944	Spacer	1
26	00-119034	Shaft – Lower Wash Arm	1
27	00-119306	Tee – Lower Wash	1
28	SC-041-31	Cap Screw 3/8-16 x 1 1/4 Hex Hd.	2
29	WL-006-28	Lockwasher 3/8 Medium	2
30	00-067500-00057	O-Ring	1
31	00-119032	Tube – Wash	1
	00-122635-00002	Lower Rinse Arm (Incls. Items 7 thru 15) (Previous Construction)	1
*	00-287152	Lower Wash Arm Kit (Incls. Items 16, 20, 21, 22, & 25)	1

*For Servicing Wash Arm with Fabricated Hub.



UPPER WASH ARM

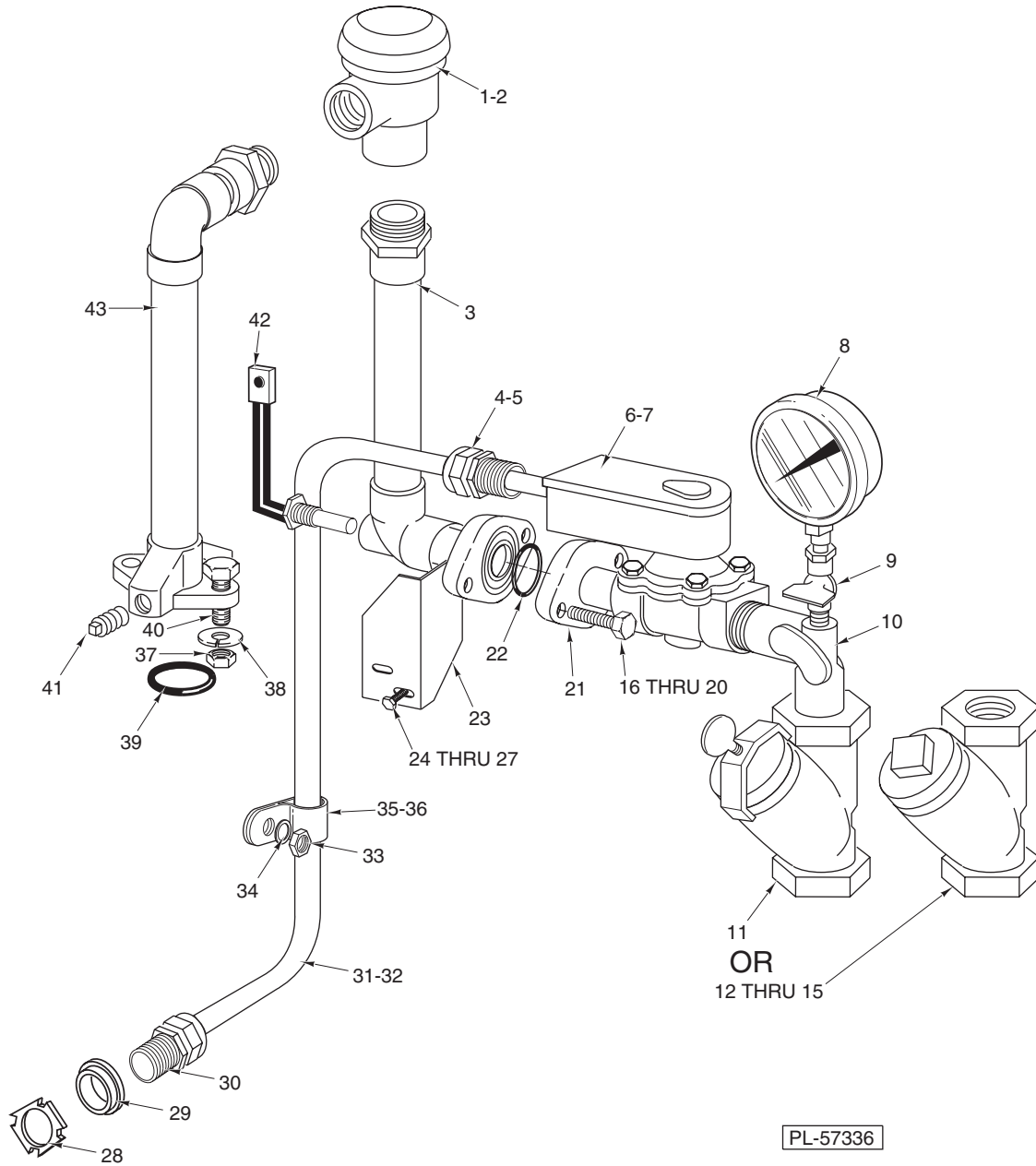
UPPER WASH ARM

ILLUS. PL-57209	PART NO.	NAME OF PART	AMT.
1	SC-041-09	Cap Screw ⁵ / ₁₆ -18 x ¹ / ₂ Hex Hd.	2
2	WL-006-23	Lockwasher ⁵ / ₁₆ Medium (SST)	2
3	00-289084	Ell – Upper Wash	1
4	00-122437	Shaft – Upper Wash Arm	1
5	00-286948	Hub	1
6	00-287140	Hub	1
7	00-067500-00019	O-Ring	1
8	BA-002-40	Ball ¹ / ₄ Dia.	13
9	00-286947	Retainer – Ball	1
10	00-287987	Wash Arm & Hub Assy. (Incls. Items 5, 7, 8, 9, 11, & 12)	1
11	WL-006-07	Lockwasher #10 Medium	2
12	SC-066-06	Mach. Screw 10-24 x ¹ / ₂ Phil. Truss Hd.	2
*13	00-122438	Upper Rinse Shaft Assy.	1
*14	00-022731-00003	Nozzle – Rinse (SST) #50 Drill (0.070)	11
*15	00-287913	Arm – Inside Rinse (6 Nozzle Holes)	1
*16	00-122401	Hub – Rinse Arm	1
*17	00-287908	Arm – Outside Rinse (5 Nozzle Holes)	1
*18	00-122440	Plug – Rinse Arm	2
*19	SC-110-44	Set Screw ⁵ / ₁₆ -18 x ³ / ₈ Soc. Hdls., Cone Pt. (Nylon)	2
*20	00-122632	Washer – Thrust	1
*21	00-122445	Handle	1
*22	RR-011-03	Retaining Ring	1
**23	00-748281	Upper Rinse Shaft Assy.	1
**24	00-748104	Upper Rinse Arm Assy.	1
25	00-474252	Cap – End	2
26	00-122632	Washer – Thrust	1
27	RR-011-03	Retaining Ring	1
28	00-122445	Handle	1
*	00-287932-00002	Rinse Arm Assy. (Incls. Items 13 thru 22)	1
***	00-287151	Upper Wash Arm Kit (Incls. Items 6 thru 9 & 12)	1

* Prior to Serial Number 23-1021-610

** First Serial Number

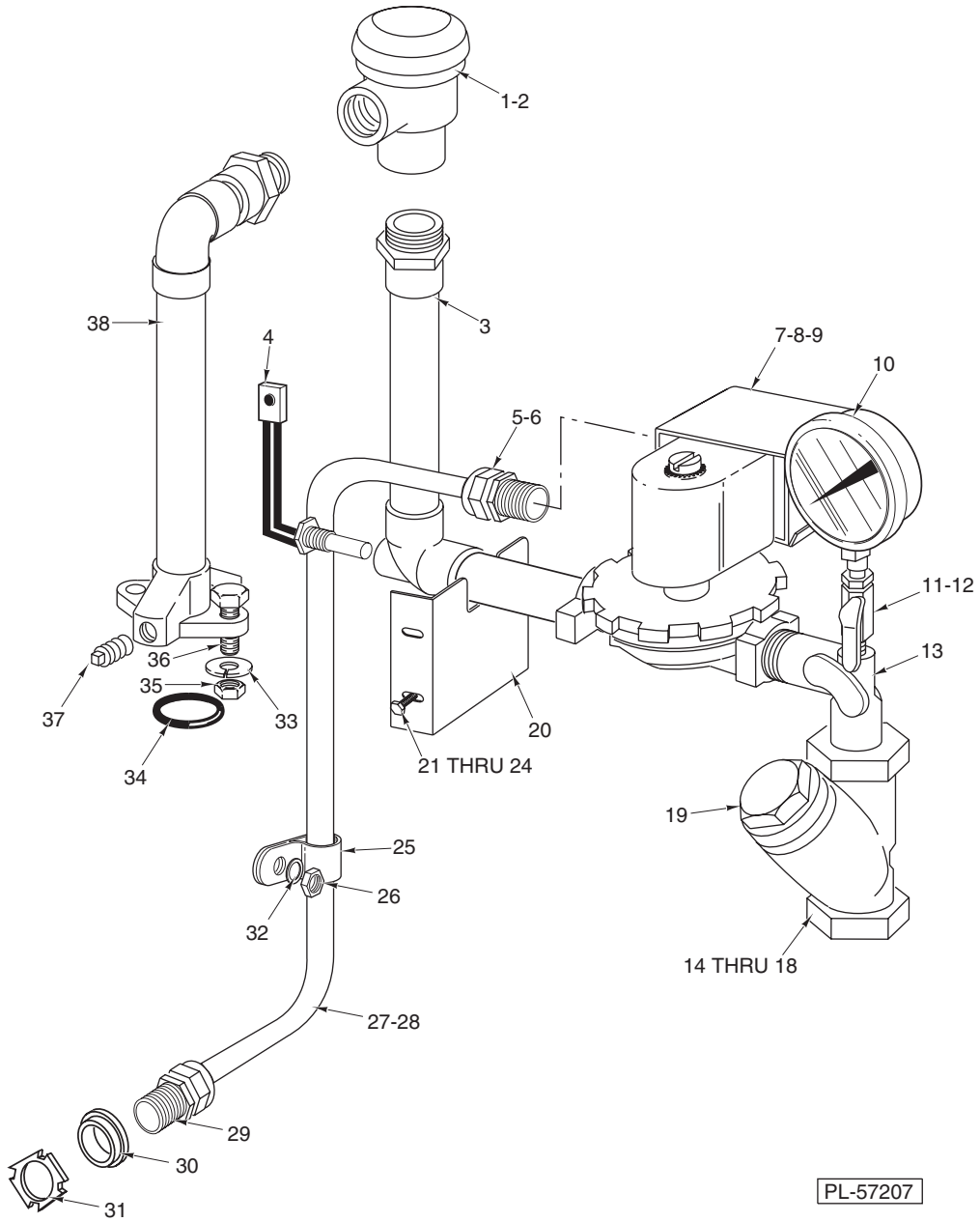
*** For Servicing Wash Arms with Fabricated Hub.



**OUTSIDE RINSE PIPING
(EARLIER PREVIOUS CONSTRUCTION)
(ML-32614, ML-32615, & ML-110025)**

**OUTSIDE RINSE PIPING
(EARLIER PREVIOUS CONSTRUCTION)
(ML-32614, ML-32615, & ML-110025)**

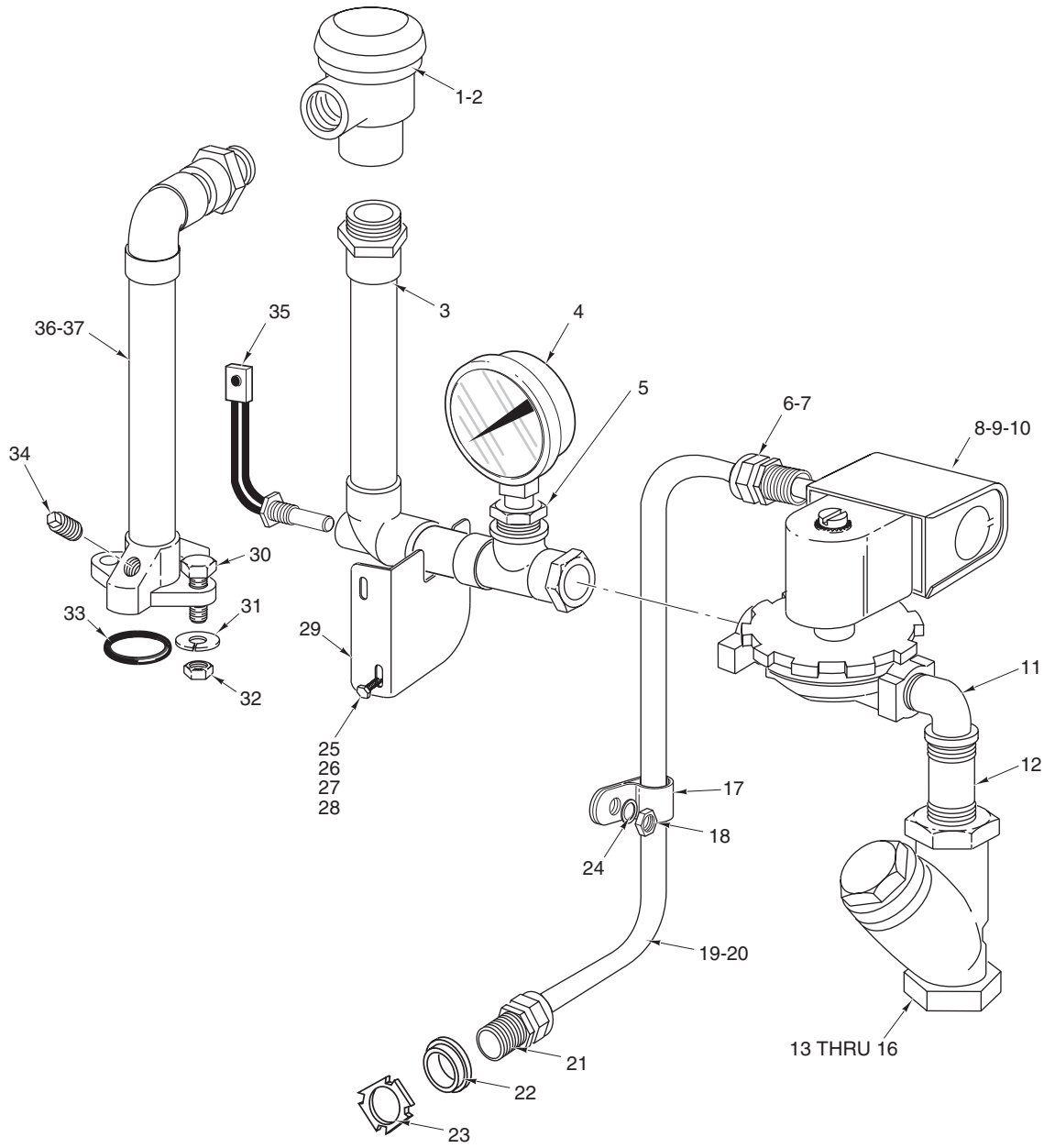
ILLUS. PL-57336	PART NO.	NAME OF PART	AMT.
1	00-277112	Vacuum Breaker (3/4 In.)	1
2	00-118270	Service Kit – Vacuum Breaker (Float & Seal Assy.)	1
3	00-288940	Connector Assy. (Vacuum Breaker to Solenoid Valve).....	1
4	FE-022-84	Relief – Strain	1
5	FE-006-05	Lock Nut 1/2	1
6	00-270329-00003	Valve – Solenoid (Incls. Item 7) (Piston Valve; Gray Cover)	1
7	00-270318-00003	Coil – Solenoid Valve (20-30 V.)	1
8	00-328247	Gauge – Water Pressure	1
9	00-436319	Petcock 1/4	1
10	00-119066	Tee – Pressure Gauge	1
11	00-082231	Screen (3/4 In. Line Strainer)	1
12	00-186922	Line Strainer (3/4 In.) (Brass)	1
13	00-186925	Screen (3/4 In. Line Strainer)	1
14	00-186924	Gasket (3/4 In. Line Strainer)	1
15	00-186923	Plug – Branch (3/4 In. Line Strainer)	1
16	SC-041-16	Cap Screw 5/16-18 x 1 3/8 Hex Hd.	1
17	SC-041-15	Cap Screw 5/16-18 x 1 1/4 Hex Hd.	1
18	WS-017-08	Washer	2
19	WL-006-23	Lockwasher 5/16 Medium (SST)	2
20	NS-015-11	Nut 5/16-18 Hex (SST)	2
21	00-063262-00026	Flange & Pipe Assy.	1
22	00-067500-00012	O-Ring	1
23	00-119292	Bracket – Outside Rinse Pipe	1
24	SC-041-05	Cap Screw 1/4-20 x 5/8 Hex Hd.	2
25	WS-003-48	Washer	2
26	WL-006-17	Lockwasher 1/4 Medium	2
27	NS-015-01	Nut 1/4-20 Hex (SST)	2
28	FE-006-05	Lock Nut 1/2	1
29	FE-008-10	1/2 Gasket Assy.	1
30	FE-022-84	Connector – Strain Relief	1
31	00-294853-046-1	Fill Valve Cable (RH Controls)	1
32	00-294853-046-4	Fill Valve Cable (LH Controls).....	1
33	NS-011-18	Mach. Nut 10-24 Hex (SST)	4
34	WL-006-07	Lockwasher #10 Medium	4
35	00-078752-00004	Retainer (7/16 In.)	1
36	00-078752-00002	Retainer (3/4 In.)	3
37	NS-015-11	Nut 5/16-18 Hex (SST)	2
38	WL-006-23	Lockwasher 5/16 Medium (SST)	2
39	00-067500-00012	O-Ring	1
40	SC-041-14	Cap Screw 5/16-18 x 1 1/8 Hex Hd. (SST)	2
41	00-119127	Pipe Plug	2
42	00-294692	Rinse Probe Assy.	1
43	00-288941-00002	Connector Assy. (Vacuum Breaker to Inside Rinse).....	1
	00-270336	Service Kit – Solenoid Valve (Piston Valve; Gray Cover)	1
	00-106459	Valve Kit (Diaphragm Type) (Incls. Cap, Bonnet Gasket, Stem Spring, & Pin)	1
	00-083376	Wire Tie (LH Controls)	2



**OUTSIDE RINSE PIPING
(PREVIOUS CONSTRUCTION)
(ML-32614, ML-32615, & ML-110025)**

**OUTSIDE RINSE PIPING
(PREVIOUS CONSTRUCTION)
(ML-32614, ML-32615, & ML-110025)**

ILLUS. PL-57207	PART NO.	NAME OF PART	AMT.
1	00-277112	Vacuum Breaker (3/4 In.)	1
2	00-118270	Service Kit – Vacuum Breaker (Float & Seal Assy.)	1
3	00-328491	Connector Assy. (Vacuum Breaker to Solenoid Valve)	1
4	00-294692	Rinse Probe Assy.	1
5	FE-022-84	Connector – Strain Relief	1
6	FE-006-05	Lock Nut 1/2	1
7	00-271002-00003	Valve – Solenoid (24 V., 50-60 Hz.) (Incls. Item 9)	1
8	00-271002-00001	Valve – Solenoid 3/4 In. (110-120 V., 50-60 Hz.)	1
9	00-271839-00003	Coil – Solenoid Valve (24 V., 50-60 Hz.)	1
10	00-328247	Gauge – Water Pressure	1
11	00-436319	Petcock 1/4	1
12	FP-040-08	Nipple	1
13	00-119066	Tee – Pressure Gauge	1
14	00-186922	Line Strainer (3/4) (Incls. Items 15 thru 18)	1
15	00-082231	Screen (3/4 In. Line Strainer)	1
16	00-186922	Plate – Seal (3/4 In. Line Strainer) (Brass)	1
17	00-082238	Thumb Screw (Not Shown)	1
18	00-067500-00059	O-Ring (3/4 In. Line Strainer)	1
19	00-186923	Plug – Branch	1
20	00-328490	Bracket – Outside Rinse Fill Piping	1
21	SC-041-05	Cap Screw 1/4-20 x 5/8 Hex Hd.	2
22	WS-003-48	Washer	2
23	WL-006-17	Lockwasher 1/4 Medium	2
24	NS-015-01	Nut 1/4-20 Hex (SST)	2
25	00-078752-00004	Retainer (1/16 In.)	1
26	NS-011-18	Mach. Nut 10-24 Hex (SST)	4
27	00-294853-046-1	Fill Valve Cable (RH Controls)	1
28	00-294853-046-4	Fill Valve Cable (LH Controls)	1
29	FE-022-84	Connector – Strain Relief	1
30	FE-008-10	1/2 Gasket Assy.	1
31	FE-006-05	Lock Nut 1/2	1
32	WL-006-07	Lockwasher #10 Medium	4
33	WL-006-23	Lockwasher 5/16 Medium (SST)	2
34	00-067500-00012	O-Ring	1
35	NS-015-11	Nut 5/16-18 Hex (SST)	2
36	SC-041-14	Cap Screw 5/16-18 x 1 1/8 Hex Hd. (SST)	2
37	00-119127	Pipe Plug	2
38	00-288941-00002	Connector Assy. (Vacuum Breaker to Inside Rinse)	1
	00-271838	Service Kit – 3/4 In. Solenoid Valve	1
	00-083376	Wire Tie	2
	00-476139	Kit – Piping (W/O Booster)	1

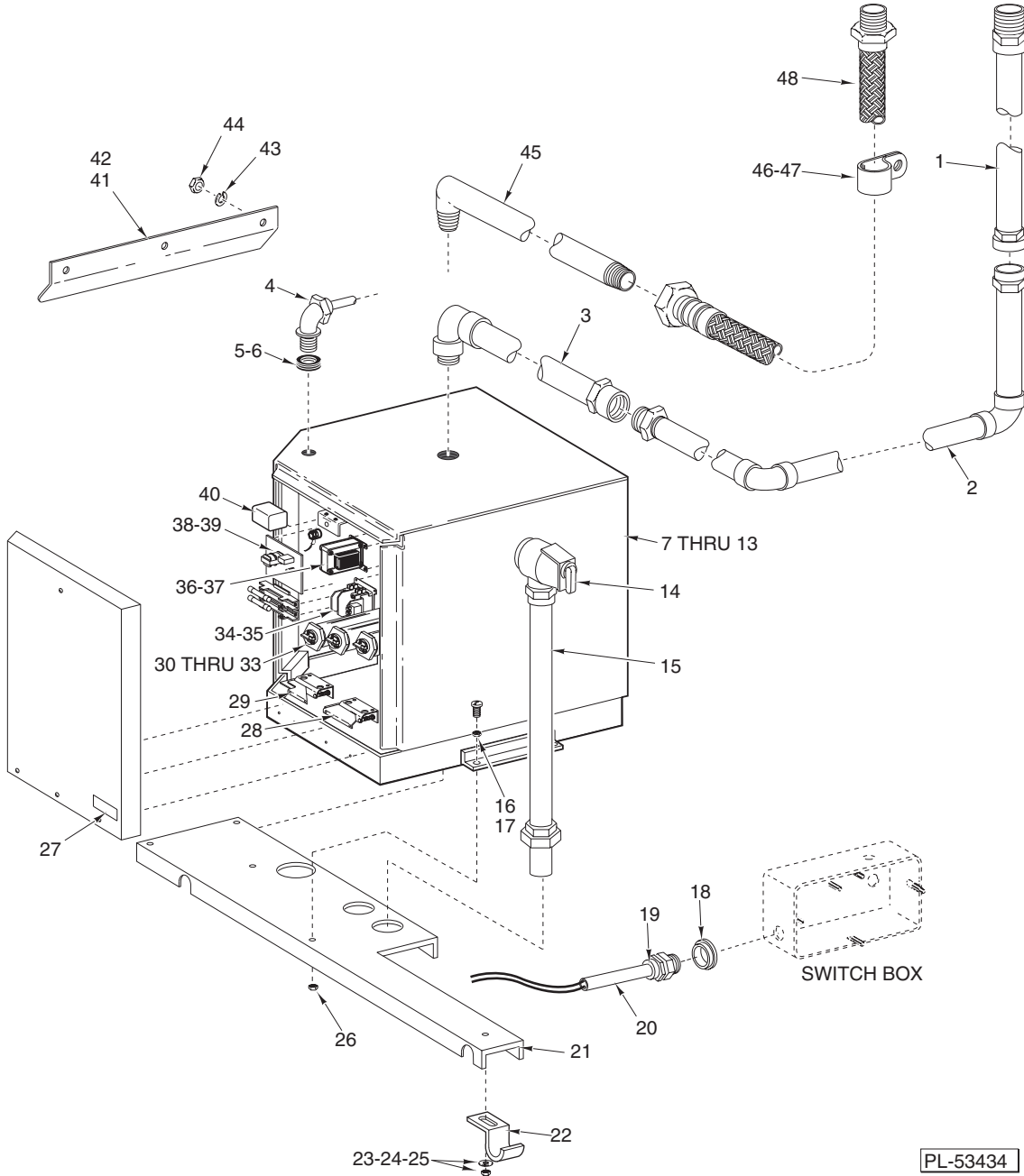


PL-57299

**OUTSIDE RINSE PIPING
(CURRENT CONSTRUCTION)
(ML-32614, ML-32615, & ML-110025)**

**OUTSIDE RINSE PIPING
(CURRENT CONSTRUCTION)
(ML-32614, ML-32615, & ML-110025)**

ILLUS. PL-57299	PART NO.	NAME OF PART	AMT.
1	00-277112	Vacuum Breaker (3/4 In.)	1
2	00-118270	Service Kit – Vacuum Breaker (Float & Seal Assy.)	1
3	00-475171	Connector Assy. (Vacuum Breaker to Solenoid Valve).....	1
4	00-328247	Gauge – Water Pressure	1
5	FP-027-07	Bushing – Pipe 1/2 to 1/4	1
6	FE-022-84	Connector – Strain Relief	1
7	FE-006-05	Lock Nut 1/2	1
8	00-271002-00003	Valve – Solenoid (24 V., 50-60 Hz.) (Incls. Item 10)	1
9	00-271002-00001	Valve – Solenoid 3/4 In. (110-120 V., 50-60 Hz.).....	1
10	00-271839-00003	Coil – Solenoid Valve (24 V., 50-60 Hz.)	1
11	FP-015-24	Street L – Pipe 3/4 x 90 Deg. (Brass)	1
12	FP-041-50	Pipe – 3/4 x 1 3/8 (Brass) TBE	1
13	00-186922	Line Strainer (3/4) (Incls. Items 14 thru 16)	1
14	00-186925	Screen (3/4 In. Line Strainer)	1
15	00-186924	Gasket (3/4 In. Line Strainer)	1
16	00-186923	Plug – Branch (3/4 In. Line Strainer)	1
17	00-078752-00004	Retainer (7/16 In.)	1
18	NS-011-18	Mach. Nut 10-24 Hex (SST)	4
19	00-294853-046-1	Fill Valve Cable (RH Controls)	1
20	00-294853-046-4	Fill Valve Cable (LH Controls).....	1
21	FE-022-84	Connector – Strain Relief	1
22	FE-008-10	1/2 Gasket Assy.	1
23	FE-006-05	Lock Nut 1/2	1
24	WL-006-07	Lockwasher #10 Medium	4
25	SC-041-05	Cap Screw 1/4-20 x 5/8 Hex Hd.	2
26	WS-003-48	Washer	2
27	WL-006-17	Lockwasher 1/4 Medium	2
28	NS-015-01	Nut 1/4-20 Hex (SST)	2
29	00-475173	Bracket – Outside Rinse Fill Piping	1
30	SC-041-14	Cap Screw 5/16-18 x 1 1/8 Hex Hd. (SST)	2
31	WL-006-23	Lockwasher 5/16 Medium (SST)	2
32	NS-015-11	Nut 5/16-18 Hex	2
33	00-067500-00012	O-Ring	1
34	FP-028-03	Pipe Plug 1/8 Sq. Hd.	2
35	00-294692	Rinse Probe Assy.	1
36	00-475170	Piping Assy. (Chamber to Vacuum Breaker)	1
	00-271838	Service Kit – 3/4 In. Solenoid Valve	1
	00-083376	Wire Tie	2
	00-294357-00001	Housing – Connector	1
	00-065890-00177	Terminal	2



PL-53434

**BOOSTER AND PIPING
(ML-32614, ML-32615, & ML-110025)**

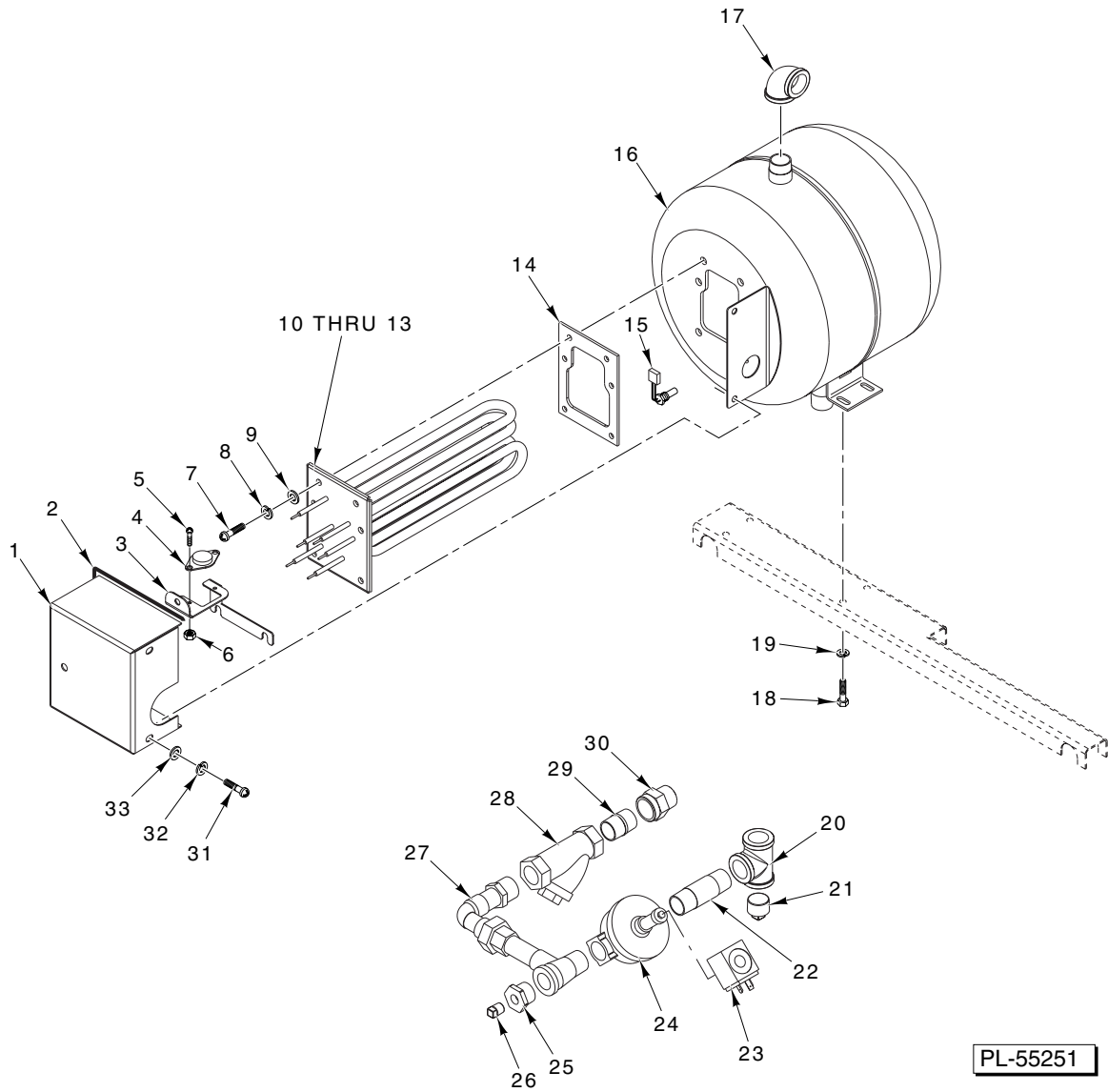
BOOSTER AND PIPING
(ML-32614, ML-32615, & ML-110025)

ILLUS.	PART NO.	NAME OF PART	AMT.
PL-53434			
*1	00-274207	Booster Piping (ML-32614 & ML-32615)	1
*2	00-274206	Booster Piping	1
*3	00-274205	Booster Piping	1
*4	FE-024-04	Strain Relief 1/2 x 90 Deg.	1
*5	FE-008-10	1/2 Gasket Assy.	1
*6	FE-024-88	Lock Nut – Electric 1/2 (Nylon)	1
7	00-274023-00001	Booster – Electric Water (200 V., 50/60 Hz.) (220 V., 50 Hz., 1 Ph.)	1
8	00-274023-00002	Booster – Electric Water (200 V., 50/60 Hz., 3 Ph.)	1
9	00-274023-00003	Booster – Electric Water (230 V., 60 Hz., 1 Ph.)	1
10	00-274023-00004	Booster – Electric Water (230 V., 60 Hz.) (240 V., 50 Hz., 3 Ph.)	1
11	00-274023-00005	Booster – Electric Water (460 V., 60 Hz., 3 Ph.)	1
12	00-274023-00007	Booster – Electric Water (380 V., 50 Hz., 3 Ph.)	1
13	00-274023-00008	Booster – Electric Water (415 V., 50 Hz., 3 Ph.)	1
14	00-274162	Valve – Pressure Temp. Relief 3/4	1
15	00-271968	Temp. Relief Valve Piping Assy.	1
16	WL-006-17	Lockwasher 1/4 Medium	4
17	SC-041-05	Cap Screw 1/4-20 x 5/8 Hex Hd.	4
18	FE-008-10	1/2 Gasket Assy.	2
19	FE-022-84	Connector – Strain Relief	1
20	00-476761-00003	Booster Cable Assy.	1
21	00-271509-00001	Support – Booster Weldment	1
22	00-274163	Clamp – Booster	2
23	WS-022-34	Washer	2
24	WL-006-17	Lockwasher 1/4 Medium	2
25	NS-015-01	Nut 1/4-20 Hex (SST)	2
26	NS-015-01	Nut 1/4-20 Hex (SST)	4
27	0F-033736	Label – Warning	1
28	00-274161	Thermostat – Control	1
29	00-274160	Thermostat – High Limit	1
30	00-274157-00001	Element – Heater (200 V.) (3200 W.)	1
31	00-274157-00002	Element – Heater (240 V.) (3800 W.)	1
32	00-274157-00003	Element – Heater (480 V.) (3800 W.)	1
33	00-274158	Gasket – Heater Element	1
34	00-274198	Contacto (120 V., Coil; 1 Ph., 2 Pole)	1
35	00-087713-066-4	Contacto – Magnetic (110-120 V., Coil; 3 Ph., 3 Pole)	1
36	00-274024	Transformer (40 VA, 208-240 V.)	1
37	00-274025	Transformer (40 VA, 480 V.)	1
38	00-274159	Board – Low Water Cut-Off (120 VAC)	1
39	00-274159-00002	Board – Low Water Cut-Off (24 VAC)	1
40	00-087714-007-1	Relay (24 VAC) (D.P.D.T.) (Steam/Electric Heat)	1
**41	00-526454-00002	Foam Tape	AR
**42	00-474601	Booster – Awning	1
**43	WL-006-17	Lockwasher 1/4 Medium	3
**44	NS-015-01	Nut 1/4-20 Hex (SST)	3
**45	00-474563	Pipe – Booster Output (Or Use 00-475237)	1
**46	00-078752-00005	Clamp (Flex Hose)	1
**47	NS-031-15	Stop Nut – Special 10-24 Hex (SST)	1
**48	00-475254-00003	Hose – Flex (Booster Piping) (ML-32614 & ML-32615)	1
	00-476144	Kit – Piping W/Booster (Incls. Items 42 & 48)	1
	00-083376	Wire Tie	1
	00-436500-00111	Fuse (AGC-1)	1

Note: Booster Voltage Specified.

* Prior to Serial Number 23-1011-500

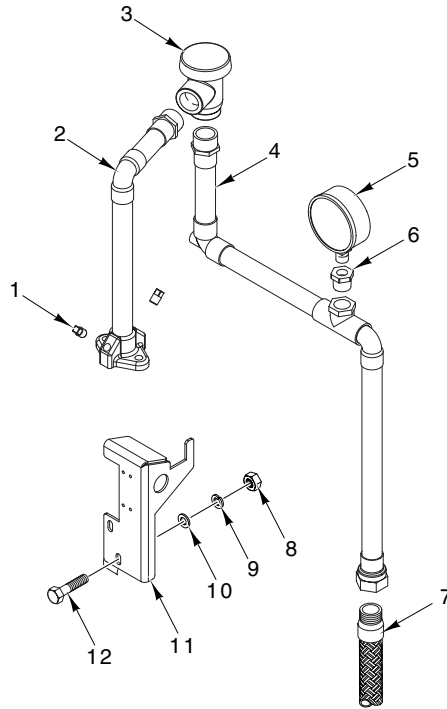
** First Serial Number



**BOOSTER TANK
(ML-110976 & ML-110977)**

**BOOSTER TANK
(ML-110976 & ML-110977)**

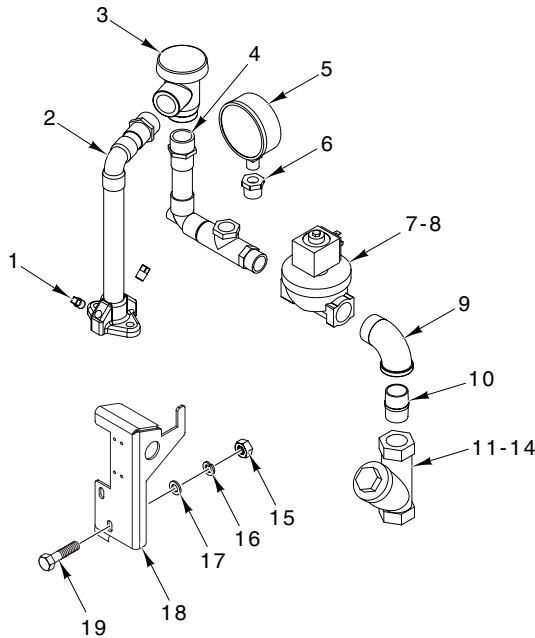
ILLUS. PL-55251	PART NO.	NAME OF PART	AMT.
1	00-749604	Lid – Heat Box (Electric Booster)	1
2	00-749991	Gasket – Lid (Heat Box)	1
3	00-749837	Bracket – High Limit Protector	1
4	00-271123	Protector – High Limit	1
5	SC-021-08	Mach. Screw 6-32 x 3/8 Rd. Hd. (SST)	2
6	NS-031-50	Stop Nut 6-32 Hex (SST)	2
7	SC-041-01	Cap Screw 1/4-20 x 3/4 Hex Hd. (SST)	6
8	WL-006-17	Lockwasher 1/4 Medium	6
9	WS-017-06	Washer	6
10	00-749554-00001	Heater (13 kW) (208 V.)	1
11	00-749554-00002	Heater (13 kW) (240 V.)	1
12	00-749554-00003	Heater (13 kW) (480 V.)	1
13	00-749554-00004	Heater (13 kW) (380 V.)	1
14	00-749555	Gasket (13 kW) (Electric Heater)	1
15	00-294692	Probe – Thermistor	1
16	00-749581	Tank – Weldment (Electric Booster)	1
17	FP-015-23	Elbow – Pipe 3/4 x 90 Deg. (Brass)	1
18	SC-041-50	Cap Screw 1/4-20 x 1/2 Hex Hd.	4
19	WL-006-17	Lockwasher 1/4 Medium	4
20	FP-019-28	Tee – Pipe 3/4 x 3/4 x 3/4 (Brass)	1
21	FP-028-19	Pipe Plug 3/4 Sq. Hd. (Brass)	1
22	FP-041-59	Pipe 3/4 x 2 1/2 TBE (Brass)	1
23	00-749936-00001	Coil – Solenoid Valve (24 V.)	1
24	00-749890-00001	Valve – Solenoid (3/4 In.) (Incls. Item 23)	1
25	FP-027-15	Bushing – Pipe 3/4 to 1/4	1
26	FP-028-07	Pipe Plug 1/4 Sq. Hd.	1
27	00-749579	Piping – Inlet, Solder	1
28	00-186922	Strainer – Line 3/4 (Brass)	1
29	FP-041-50	Pipe 3/4 x 1 3/8 TBE (Brass)	1
30	00-328818-00002	Regulator – Flow	1
31	SC-041-50	Cap Screw 1/4-20 x 1/2 Hex Hd.	3
32	WL-006-17	Lockwasher 1/4 Medium	3
33	WS-017-06	Washer	3
	00-749939	Kit – Service 3/4 In. Valve (Use with Item 24)	1
	00-546292	Sealer	AR



PL-57213

**OUTSIDE RINSE PIPING W/BOOSTER
(ML-110976 & ML-110977)**

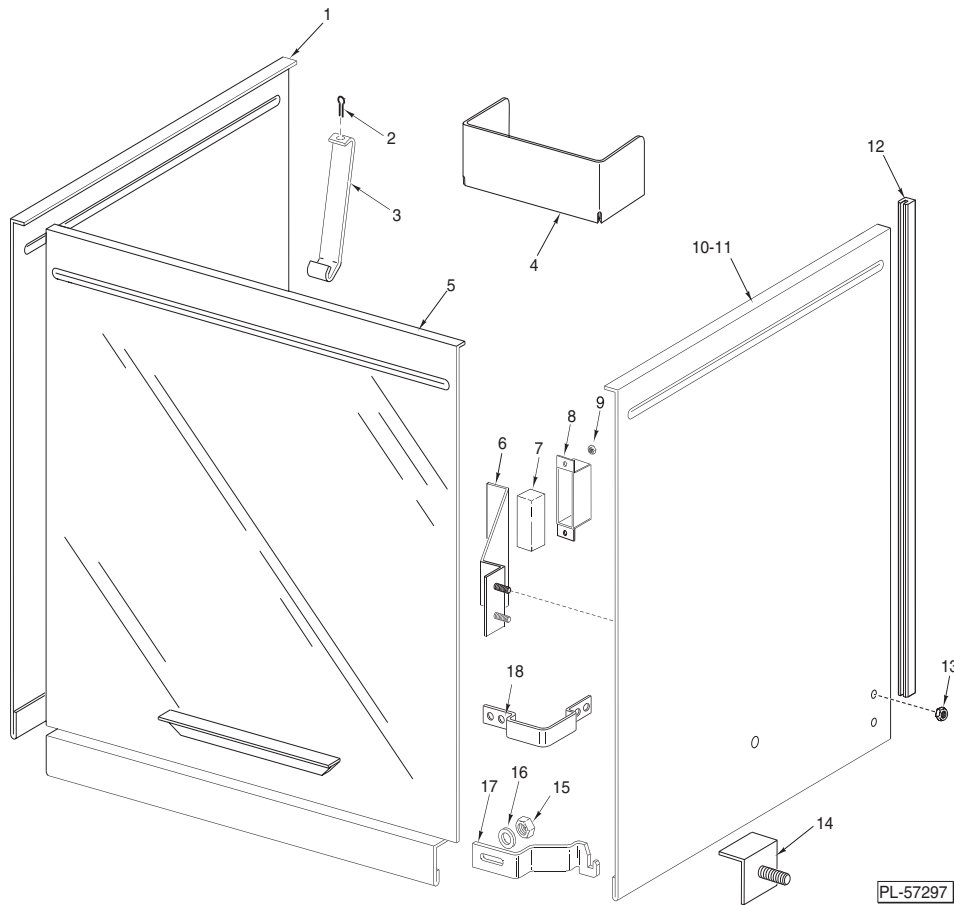
ILLUS.	PART NO.	NAME OF PART	AMT.
PL-57213			
1	00-119127	Pipe Plug 1/8 Sq. Hd.	2
2	00-475170	Piping Assy. (Chamber to Vacuum Breaker)	1
3	00-277112	Vacuum Breaker (3/4)	1
4	00-749629	Piping Assy. (Vacuum Breaker to Hose)	1
5	00-328247	Gauge – Water Pressure	1
6	FP-027-07	Bushing – Pipe 1/2 to 1/4 (Brass)	1
7	00-749153-00007	Hose – Water 3/4 x 58 In. Braided (SST)	1
8	NS-015-01	Nut 1/4 – 20 Hex (SST)	2
9	WL-006-17	Lockwasher 1/4 Medium	2
10	WS-017-06	Washer	2
11	00-749984	Bracket – Outside Fill Piping	1
12	SC-041-05	Cap Screw 1/4-20 x 5/8 Hex Hd.	2
	00-546292	Sealer	AR
	00-749887-00005	Cable – Fill Valve (RH & LH Controls)	1



PL-57214

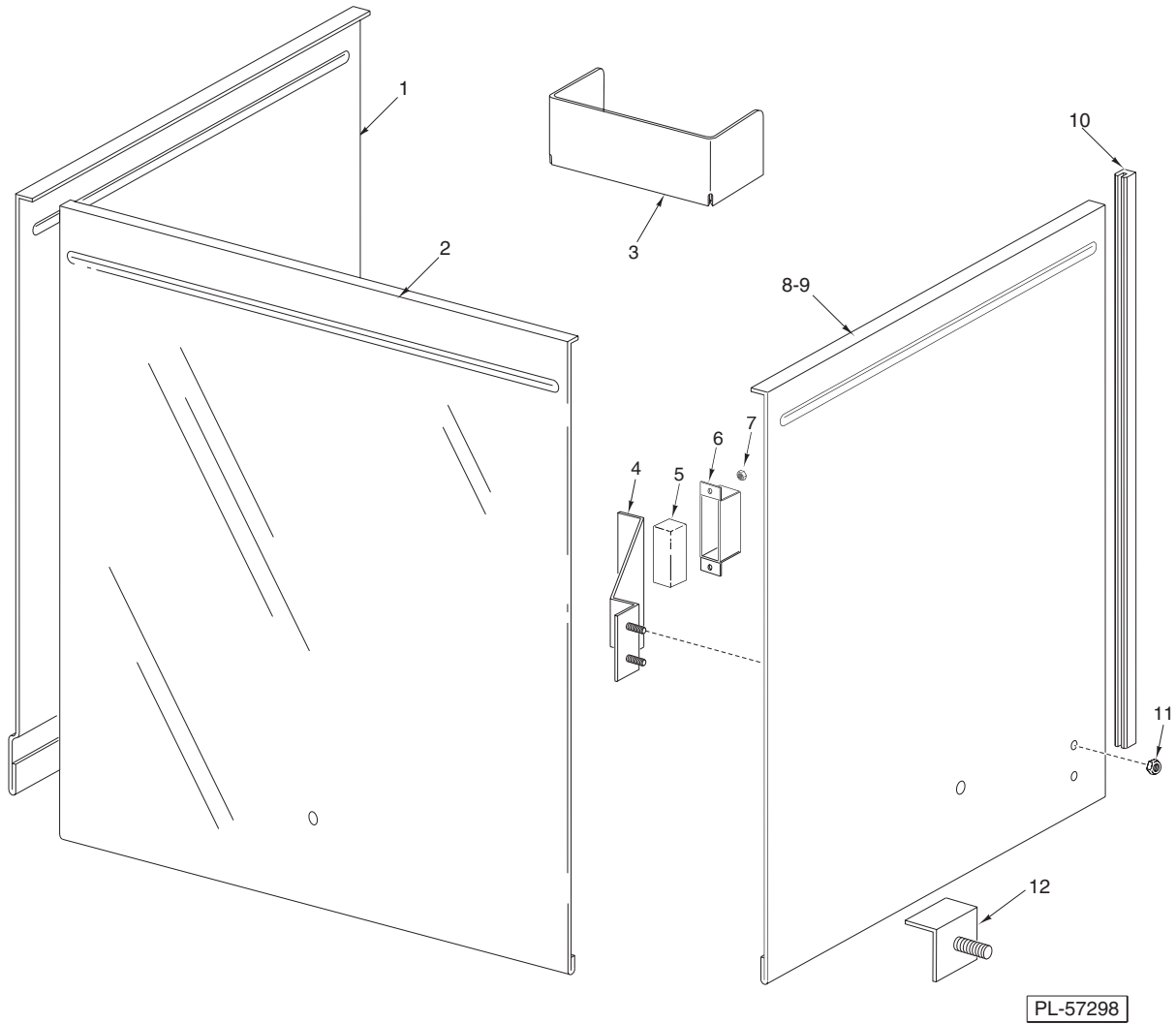
**OUTSIDE RINSE PIPING W/O BOOSTER
(ML-110976 & ML-110977)**

ILLUS.	PART NO.	NAME OF PART	AMT.
PL-57214			
1	00-119127	Pipe Plug 1/8 Sq. Hd.	2
2	00-475170	Piping Assy. (Chamber to Vacuum Breaker)	1
3	00-277112	Vacuum Breaker (3/4)	1
4	00-749940	Piping Assy. (Vacuum Breaker to Valve)	1
5	00-328247	Gauge – Water Pressure	1
6	FP-027-07	Bushing – Pipe 1/2 to 1/4 (Brass)	1
7	00-749890-00001	Valve – Solenoid (3/4 In.) (Incls. Item 8)	1
8	00-749936-00001	Coil – Solenoid Valve (24 VAC)	1
9	FP-015-24	Elbow – Pipe 3/4 x 90 Deg. (Brass)	1
10	FP-041-50	Pipe 3/4 x 1 3/8 TBE (Brass)	1
11	00-186922	Strainer – Line 3/4 (Brass)	1
12	00-749802-00003	Screen (80 Mesh)	1
13	00-749802-00002	Gasket	1
14	00-749802-00001	Cap	1
15	NS-015-01	Nut 1/4-20 Hex (SST)	2
16	WL-006-17	Lockwasher 1/4 Medium	2
17	WS-017-06	Washer	2
18	00-749984	Bracket – Outside Fill Piping	1
19	SC-041-05	Cap Screw 1/4-20 x 5/8 Hex Hd.	2
	00-749939	Kit – Service 3/4 Valve (Use with Item 7)	1
	00-546292	Sealer	AR
	00-749887-00003	Cable – RH Fill Valve (AM14 & AM14C)	1
	00-749887-00004	Cable – LH Fill Valve (AM14 & 90 Deg. AM14C)	1



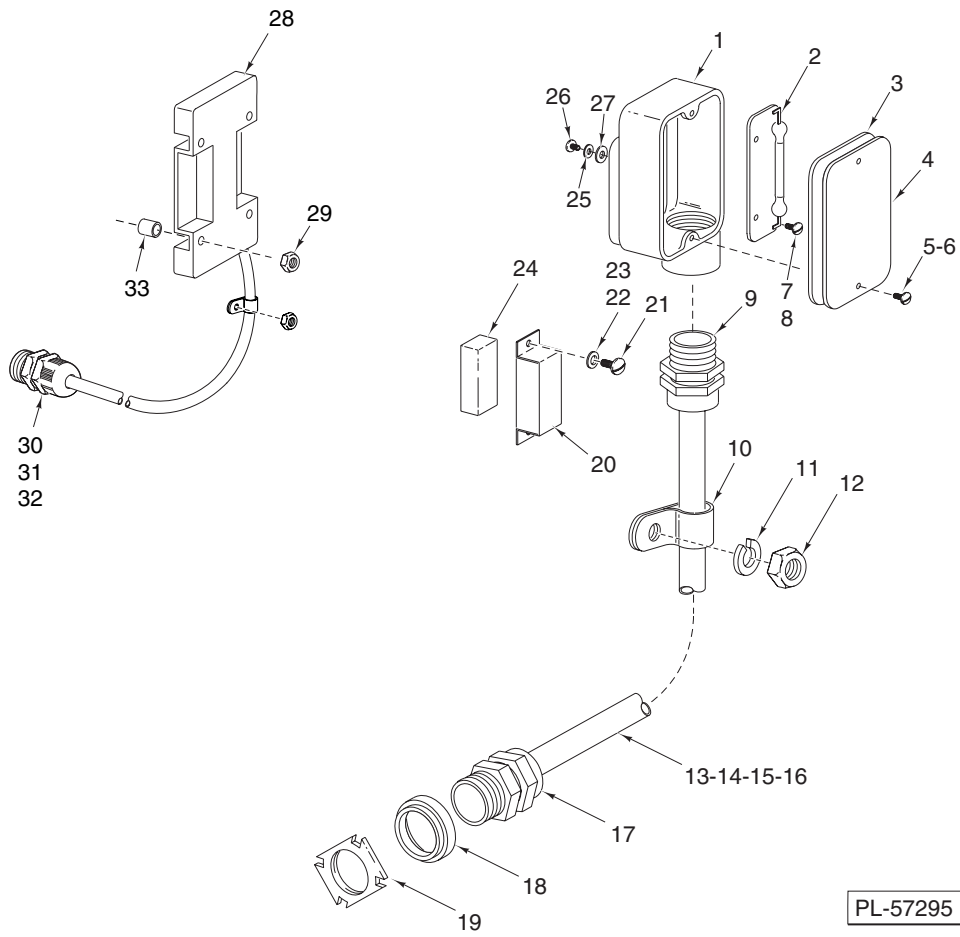
**DOOR
(STRAIGHT-THRU)**

ILLUS.	PART NO.	NAME OF PART	AMT.
PL-57297			
1	00-119006-00002	Door – Counterbalanced (LH) (AM14 & AM14P)	1
2	PC-006-29	Cotter Pin 1/16 x 1/2 (SST)	1
3	00-119236	Latch – Inspection Door	1
4	00-892037	Deflector – Vent	1
5	00-119133	Door & Lift Assy. (Non-Counterbalanced)	1
6	00-748056	Bracket – Magnet	1
7	00-290160	Magnet	1
8	00-290159	Retainer – Magnet	1
9	NS-031-50	Stop Nut 6-32 Hex (SST)	2
10	00-748055	Door (RH) (AM14 & AM14P)	1
11	00-119006-00001	Door – Counterbalance (RH) (Used With Side Mount Door Switch) (Not Shown)	1
12	00-112378-00023	Guide – Door	6
13	NS-047-82	Stop Nut – Special 1/4-20 Hex	2
14	00-289117-00002	Door Stop Assy.	2
15	NS-018-06	Jam Nut 5/16-18 Hex	2
16	WS-017-08	Washer	2
17	00-475150-00001	Bracket – Door Lock (RH) (AM14)	1
18	00-329747	Bracket – Door Lock (AM14P)	2



**DOOR AM14C
(CORNER)**

ILLUS. PL-57298	PART NO.	NAME OF PART	AMT.
1	00-119005	Door – Inspection	1
2	00-119098	Door – Counterbalanced (Front).....	1
3	00-892037	Deflector – Vent	1
4	00-748056	Bracket – Magnet	1
5	00-290160	Magnet.....	1
6	00-290159	Retainer – Magnet	1
7	NS-031-50	Stop Nut 6-32 Hex (SST)	1
8	00-748055	Door – Counterbalanced (RH).....	1
9	00-119006-00001	Door – Counterbalanced (RH) (Used With Side Mount Door Switch) (Not Shown)	1
10	00-112378-00023	Guide – Door	2
11	NS-047-82	Stop Nut – Special 1/4-20 Hex	2
12	00-289117-00002	Door Stop Assy.	2

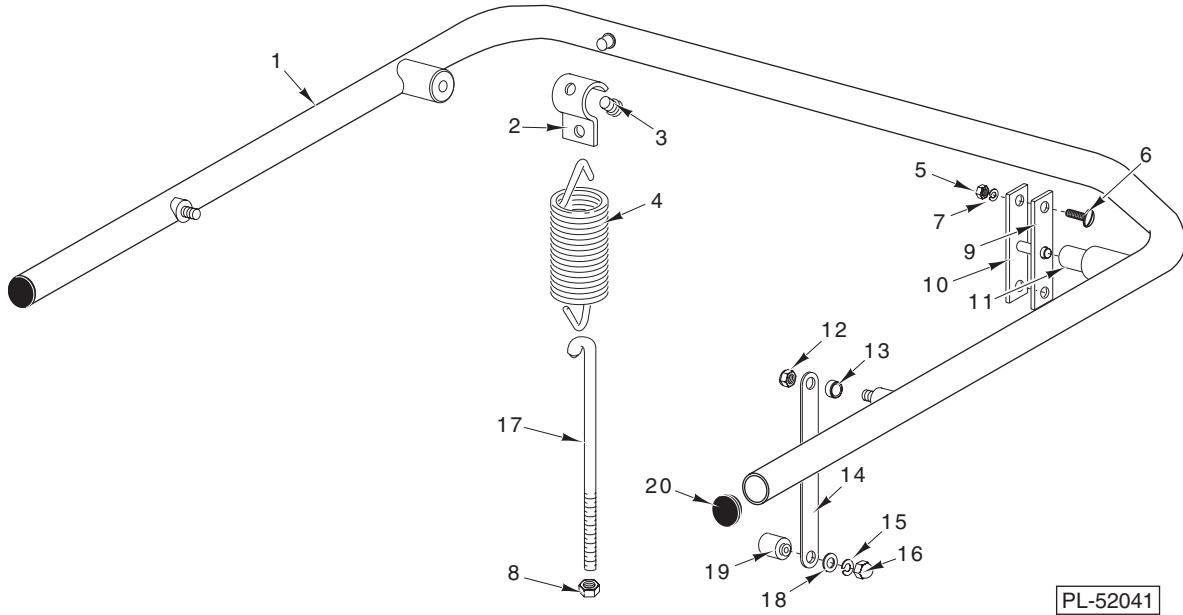


PL-57295

DOOR INTERLOCK

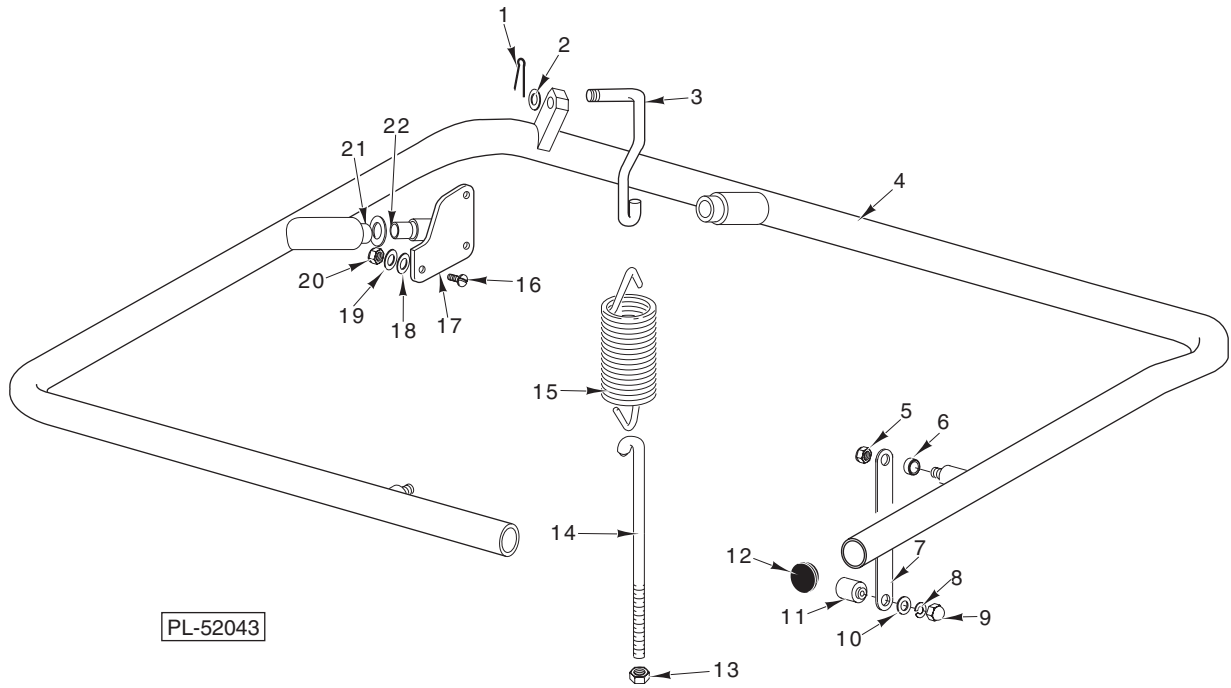
DOOR INTERLOCK

ILLUS. PL-57295	PART NO.	NAME OF PART	AMT.
1	00-436069	Housing – Cycle Switch	1
2	00-436071	Retainer – Switch Weldment (Switch Included)	1
3	00-436073	Gasket – Housing	1
4	00-436072	Cover – Housing	1
5	SC-093-03	Mach. Screw 8-32 x $\frac{3}{8}$ Phil. Pan Hd. (SST)	2
6	WL-006-02	Lockwasher #8 Medium	2
7	SC-115-26	Mach. Screw 6-32 x $\frac{5}{16}$ Pan Hd.	2
8	WL-006-42	Lockwasher #6 Medium	2
9	FE-022-84	Connector – Strain Relief	1
10	00-078752-00002	Retainer ($\frac{3}{4}$ In.)	4
11	WL-006-07	Lockwasher #10 Medium	2
12	NS-011-18	Mach. Nut 10-24 Hex (SST)	2
13	00-294514	Door Interlock Cable Assy. (RH Controls) (Previous Construction)	1
14	00-294514-00012	Door Interlock Assy. (RH Controls) (Current Construction)	1
15	00-294514-00002	Door Interlock Cable Assy. (LH Controls) (Previous Construction)	1
16	00-294514-00013	Door Interlock Assy. (LH Controls) (Current Construction)	1
17	FE-022-84	Connector – Strain Relief	1
18	FE-008-10	$\frac{1}{2}$ Gasket Assy. (Previous Construction)	1
19	FE-006-05	Lock Nut $\frac{1}{2}$ (Previous Construction)	1
20	00-435950	Retainer – Magnet	1
21	SC-115-26	Mach. Screw 6-32 x $\frac{5}{16}$ Pan Hd.	2
22	WS-023-01	Washer	2
23	NS-031-50	Stop Nut 6-32 Hex (SST)	2
24	00-436091	Magnet – Door Cycle Switch	1
25	WL-006-07	Lockwasher #10 Medium	2
26	SC-066-06	Mach. Screw 10-24 x $\frac{1}{2}$ Phil. Truss Hd.	2
27	WS-029-79	Washer	2
28	00-749348-00002	Switch – Door	1
29	NS-031-50	Stop Nut 6-32 Hex (SST)	4
30	FE-008-10	$\frac{1}{2}$ Gasket Assy. (Previous Construction)	1
31	FE-024-88	Lock Nut – Electric $\frac{1}{2}$ (Nylon)	1
32	FE-022-84	Connector – Strain Relief	1
33	00-118349-00004	Standoff – Reed Board ($\frac{1}{4}$ Lg.)	2
	00-436910	Kit – Door Interlock (Incls. Items 1 thru 6 & 20 thru 27)	1



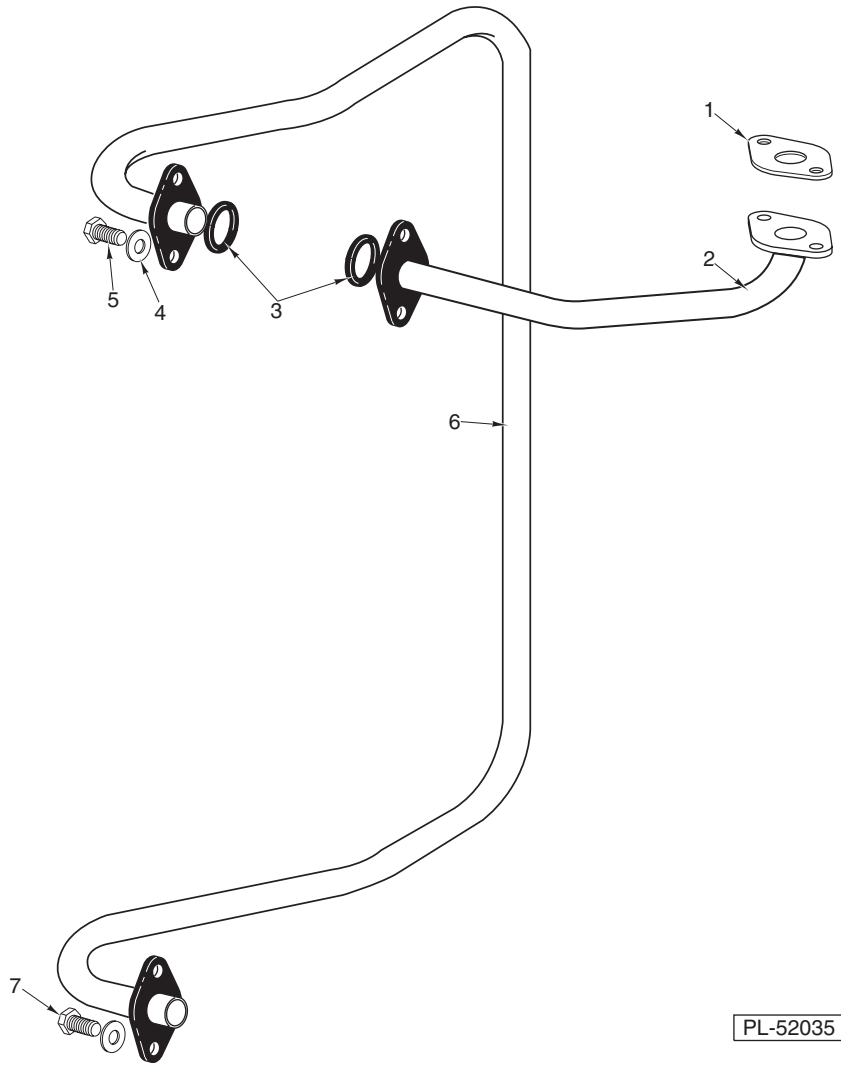
**DOOR LIFT AM14 & 14P
(STRAIGHT-THRU)**

ILLUS.	PART NO.	NAME OF PART	AMT.
1	00-475200-00001	Door Lift	1
2	00-079008	Hanger – Spring	1
3	00-119055	Button – Bearing	2
4	00-119079-00001	Spring – Counterbalanced	1
5	NS-015-11	Nut ⁵ / ₁₆ -18 Hex	4
6	SC-053-16	Mach. Screw ⁵ / ₁₆ -18 x ⁵ / ₈ Truss Hd.	4
7	WL-006-23	Lockwasher ⁵ / ₁₆ Medium (SST)	4
8	NS-015-11	Nut ⁵ / ₁₆ -18 Hex	2
9	00-473432	Gasket – Door Lift	2
10	00-119017	Bearing Bracket & Pin Assy.	2
11	00-119104	Bushing – Door Lift Pin	2
12	NS-032-35	Stop Nut ⁵ / ₁₆ -18 Flexloc	2
13	00-074068	Spacer – Door Link	2
14	00-119011	Link – Door	2
15	WL-006-23	Lockwasher ⁵ / ₁₆ Medium (SST)	2
16	NS-025-09	Nut ⁵ / ₁₆ -18 Crown	2
17	00-186334-00002	Hook – Spring	1
18	WS-005-32	Washer	2
19	00-119046	Pin – Door Lift	2
20	00-474831	Plug – Handle	2



**DOOR LIFT AM14C
(CORNER)**

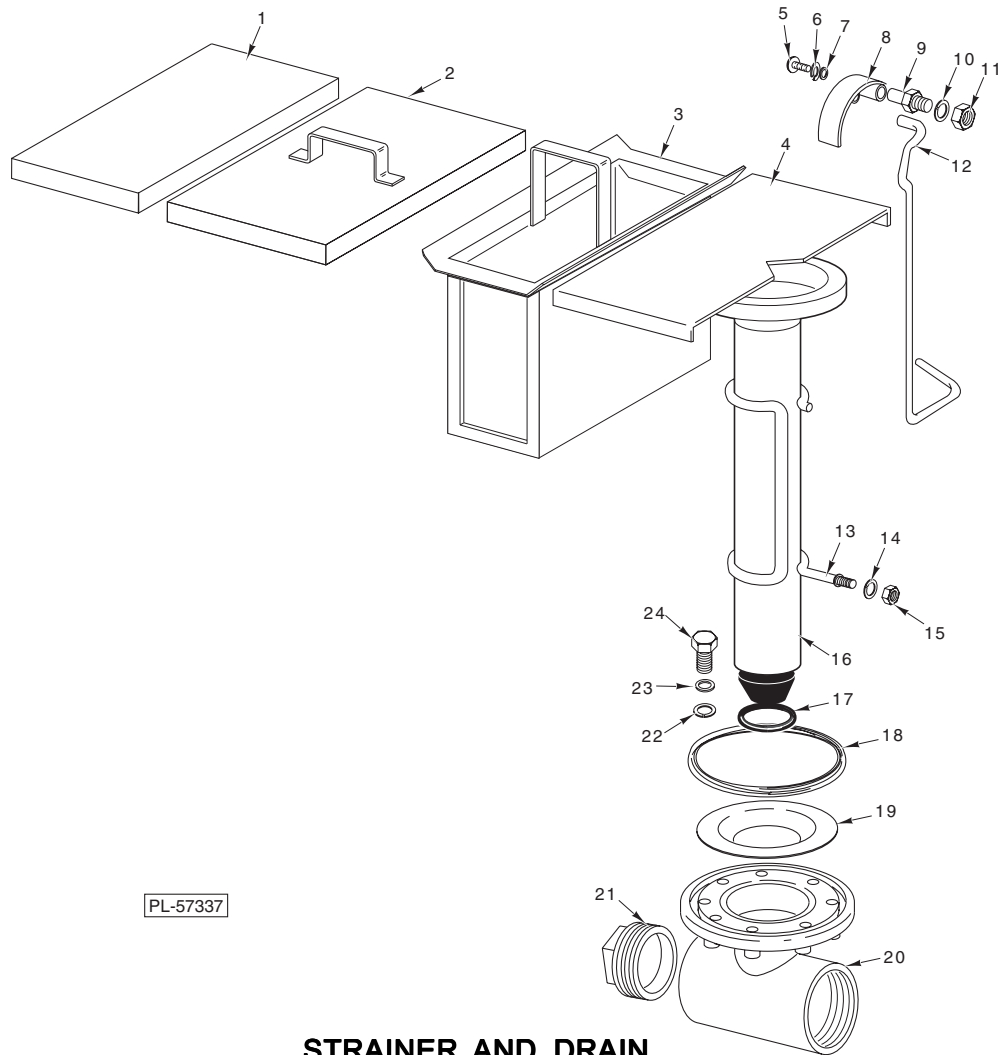
ILLUS.	PART NO.	NAME OF PART	AMT.
PL-52043			
1	PC-005-11	Cotter Pin ³ / ₃₂	AR
2	WS-017-08	Washer	1
3	00-119072	Hook – Spring (Upper)	1
4	00-475203	Door Lift	1
5	NS-032-35	Stop Nut ⁵ / ₁₆ -18 Flexloc	2
6	00-119048	Spacer – Door Link	2
7	00-119042	Link – Door Lift	2
8	WL-006-23	Lockwasher ⁵ / ₁₆	2
9	NS-025-09	Nut ⁵ / ₁₆ -18 Crown	2
10	WS-005-32	Washer	2
11	00-119046	Pin – Door Lift	2
12	00-474831	Plug – Handle	2
13	NS-015-11	Nut ⁵ / ₁₆ -18 Hex	2
14	00-186334-00002	Hook – Spring	2
15	00-119079-00002	Spring – Counterbalance	1
16	SC-053-16	Mach. Screw ⁵ / ₁₆ -18 x ⁵ / ₈ Truss Hd.	8
17	00-119272	Pivot Assy.	2
18	WS-017-08	Washer	8
19	WL-006-23	Lockwasher ⁵ / ₁₆ Medium (SST)	8
20	NS-015-11	Nut ⁵ / ₁₆ -18 Hex	8
21	WS-010-42	Washer	6
22	00-074532	Bushing	2



PL-52035

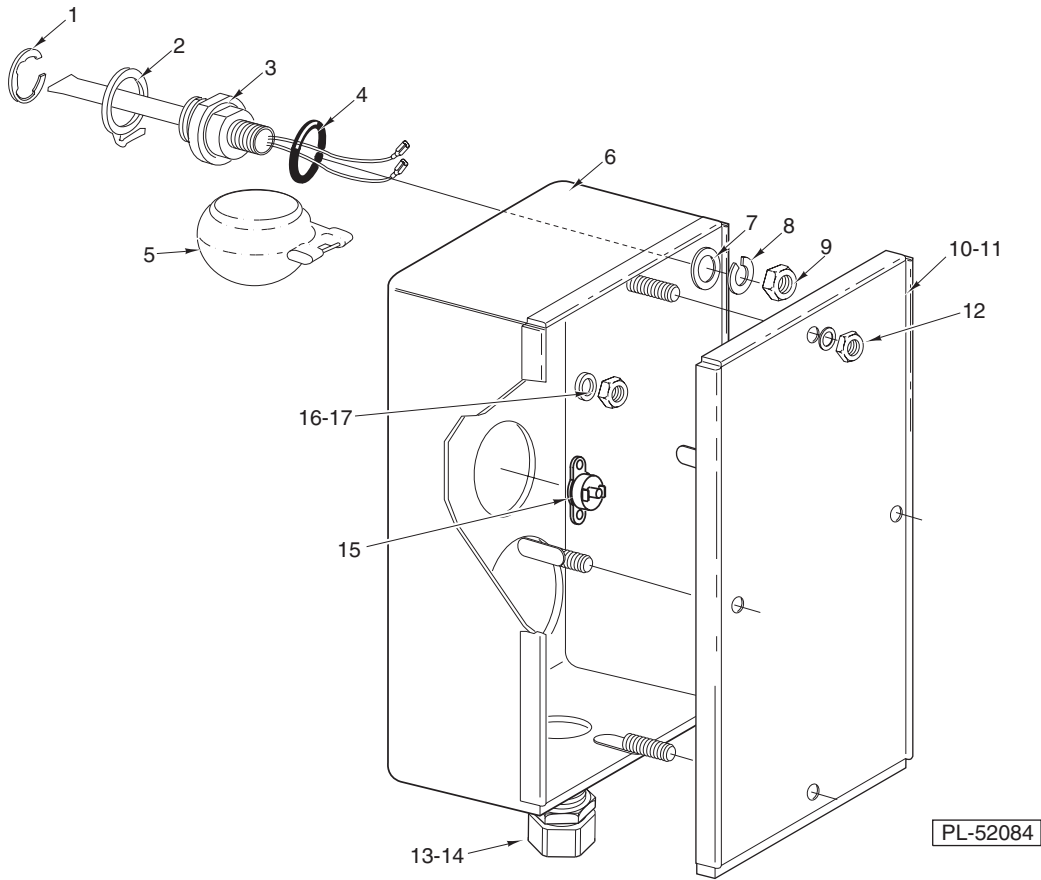
INSIDE RINSE PIPING

ILLUS.	PART NO.	NAME OF PART	AMT.
PL-52035			
1	00-276407	Gasket – Rinse Pipe	1
2	00-289086	Fill Tube Assy.	1
3	00-067500-00009	O-Ring	3
4	WL-006-23	Lockwasher ⁵ / ₁₆ Medium (SST)	6
5	SC-041-10	Cap Screw ⁵ / ₁₆ -18 x ⁵ / ₈ Hex Hd.	6
6	00-474869	Rinse Connector & Flange Assy.	1
7	SC-041-09	Cap Screw ⁵ / ₁₆ -18 x ¹ / ₂ Hex Hd.	2



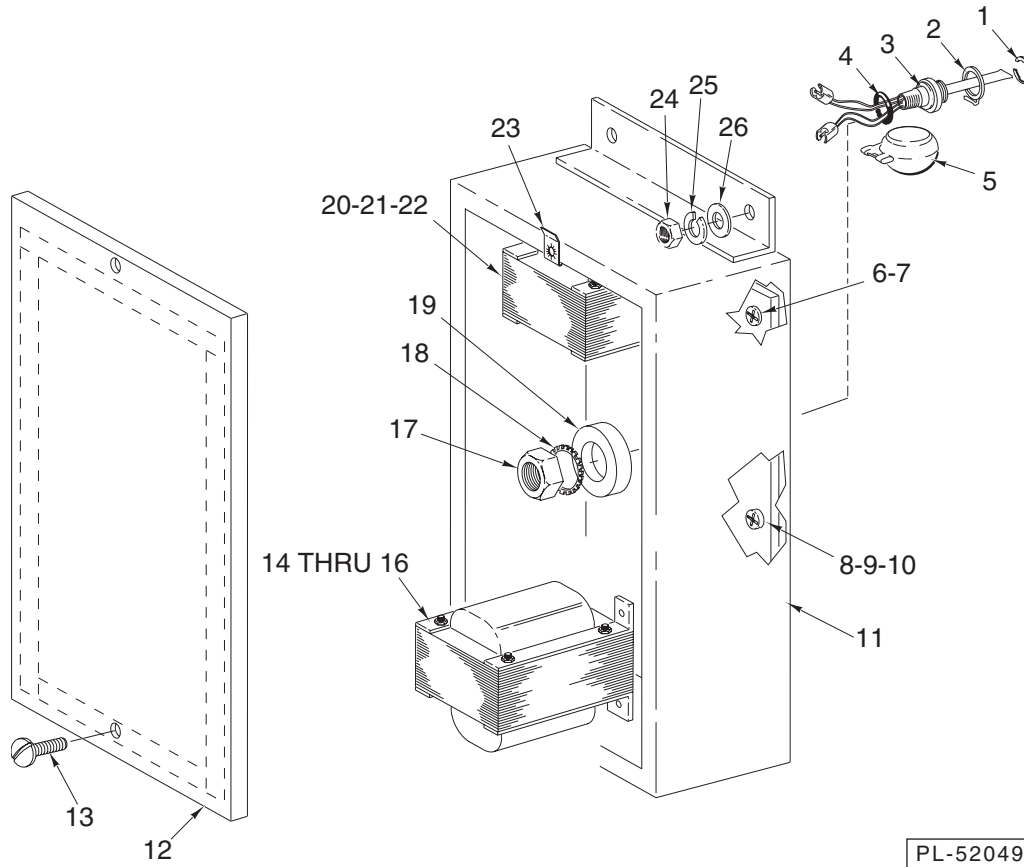
STRAINER AND DRAIN

ILLUS.	PART NO.	NAME OF PART	AMT.
PL-57337			
1	00-289112	Cover – Sump	1
2	00-118967	Strainer – Slanted	1
3	00-118999	Strainer Basket Assy.	1
4	00-289111	Cover – Overflow	1
5	SC-021-22	Mach. Screw 10-24 x 3/8 Rd. Hd. (SST)	1
6	WL-006-07	Lockwasher #10 Medium	1
7	WS-023-34	Washer	1
8	00-119121	Drain Lever Assy.	1
9	00-119116	Axle – Drain Lever	1
10	WL-006-17	Lockwasher 1/4 Medium	1
11	NS-015-01	Nut 1/4-20 Hex (SST)	1
12	00-119119	Rod – Overflow Lift	1
13	00-277025	Guide	1
14	WL-006-17	Lockwasher 1/4 Medium	2
15	NS-047-82	Stop Nut – Special 1/4-20 Hex (SST)	2
16	00-119099-00002	Tube – Overflow	1
17	00-067500-00120	O-Ring (Overflow Tube)	1
18	00-067500-00082	O-Ring	1
19	00-119239	Sleeve	1
20	00-118976	Body – Drain Valve	1
21	FP-028-32	Pipe Plug 2 In. Sq. Hd.	1
22	WS-017-08	Washer	8
23	WL-006-23	Lockwasher 5/16 Medium (SST)	8
24	SC-041-11	Cap Screw 5/16-18 x 3/4 Hex Hd. (SST)	8



**LOW WATER PROTECTION & HEAT BOX
(STEAM & ELECTRIC HEAT)**

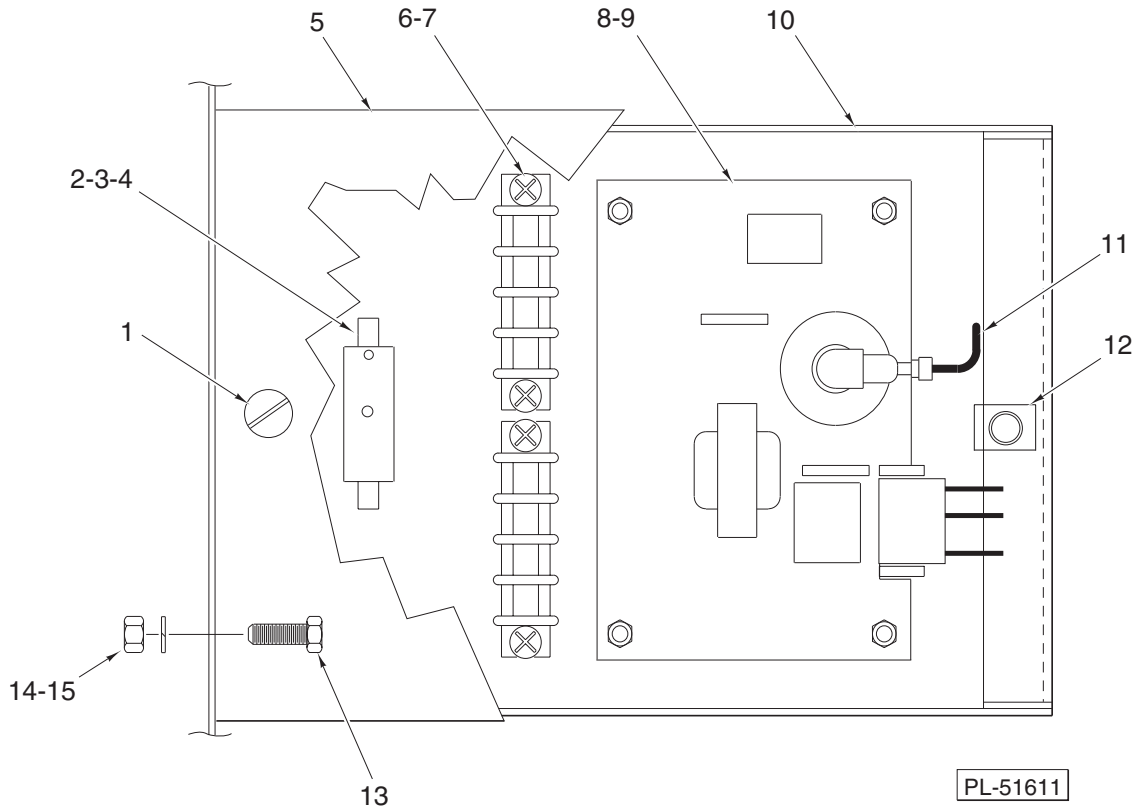
ILLUS.	PART NO.	NAME OF PART	AMT.
PL-52084			
1	RR-010-13	Retaining Ring	1
2	00-112467	Retainer – Float	1
3	00-271621	Probe & Switch Assy. (4 Wire) (Temperatures & Water Level)	1
4	00-067500-00072	O-Ring	1
5	00-122674	Float Assy.	1
6	00-474567-00001	Heat Box (Use with Electric Heat)	1
7	WS-010-40	Washer – Thrust	1
8	WL-014-31	Lockwasher 1/2 External Shakeproof (SST)	1
9	NS-018-28	Jam Nut 1/2-20 Hex	1
10	00-474574-00002	Lid Assy. – Heat Box (Steam/Electric)	1
11	00-474569	Gasket – Electric Heat Box	1
12	NS-031-15	Stop Nut – Special 10-24 Hex (SST)	4
13	FE-022-84	Connector – Strain Relief	1
14	FE-006-05	Lock Nut 1/2	1
15	00-294618	Temperature Control Kit (Incls. Spacers & Nuts) (Use with Electric Heat)	1
16	NS-015-01	Nut 1/4-20 Hex (SST)	4
17	WL-006-17	Lockwasher 1/4 Medium	4
	00-289121	Kit – Low Water Protection (Incls. Items 1 thru 5)	1
	PB-004-08	Plug Bottom 7/8 (Heyco 2703)	1



PL-52049

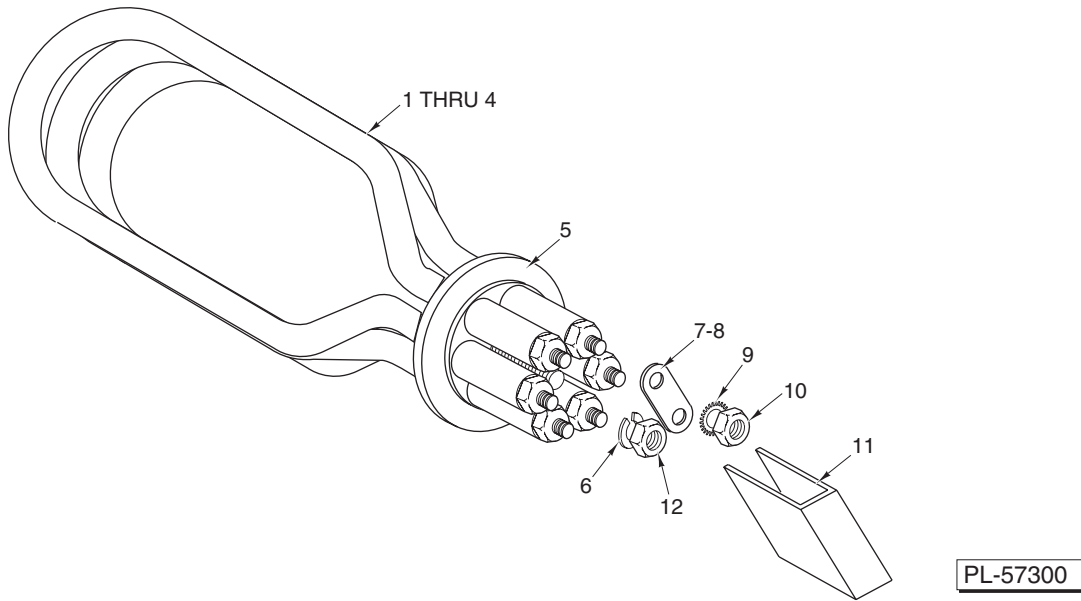
LOW WATER PROTECTION & TRANSFORMER BOX (GAS HEAT)

ILLUS.	PART NO.	NAME OF PART	AMT.
	PL-52049		
1	RR-010-13	Retaining Ring	1
2	00-112467	Retainer – Float	1
3	00-271621	Probe & Switch Assy. (4 Wire) (Temperature & Water Level)	1
4	00-067500-00072	O-Ring	1
5	00-122674	Float Assy.	1
6	SC-071-11	Mach. Screw 10-24 x 3/8 Phil. Truss Hd.	4
7	WL-007-12	Lockwasher #10 External Shakeproof	4
8	SD-008-25	Self-Tapping Screw 10-16 x 1/2 Phil. Pan Hd., Type B	1
9	WL-007-12	Lockwasher #10 External Shakeproof (Place Under Ground Connectors)	1
10	00-473506	Base Plate (Transformer Box)	1
11	00-473508-00001	Box – Transformer	1
12	00-473509	Lid – Transformer Box	1
13	SC-053-02	Mach. Screw 10-24 x 1/2 Truss Hd. (SST)	2
14	00-294500-046-2	Transformer (300 VA) Pilot Control	1
15	SD-008-25	Self-Tapping Screw 10-16 x 1/2 Phil. Pan Hd., Type B	4
16	WL-007-12	Lockwasher #10 External Shakeproof	1
17	NS-015-01	Nut 1/4-20 Hex (SST)	1
18	WL-006-17	Lockwasher 1/4 Medium	1
19	WS-010-40	Washer – Thrust	2
20	00-294500-026-1	Transformer (All Voltages) (Gas Heat)	1
21	SD-008-25	Self-Tapping Screw 10-16 x 1/2 Phil. Pan Hd., Type B	4
22	WL-007-12	Lockwasher #10 External Shakeproof	1
23	00-074348	Speed Nut 10-24	2
24	NS-015-01	Nut 1/4-20 Hex (SST)	4
25	WL-006-17	Lockwasher 1/4 Medium	4
26	WS-017-06	Washer	4
	00-526454-00002	Foam Tape (Use with Item 12)	AR



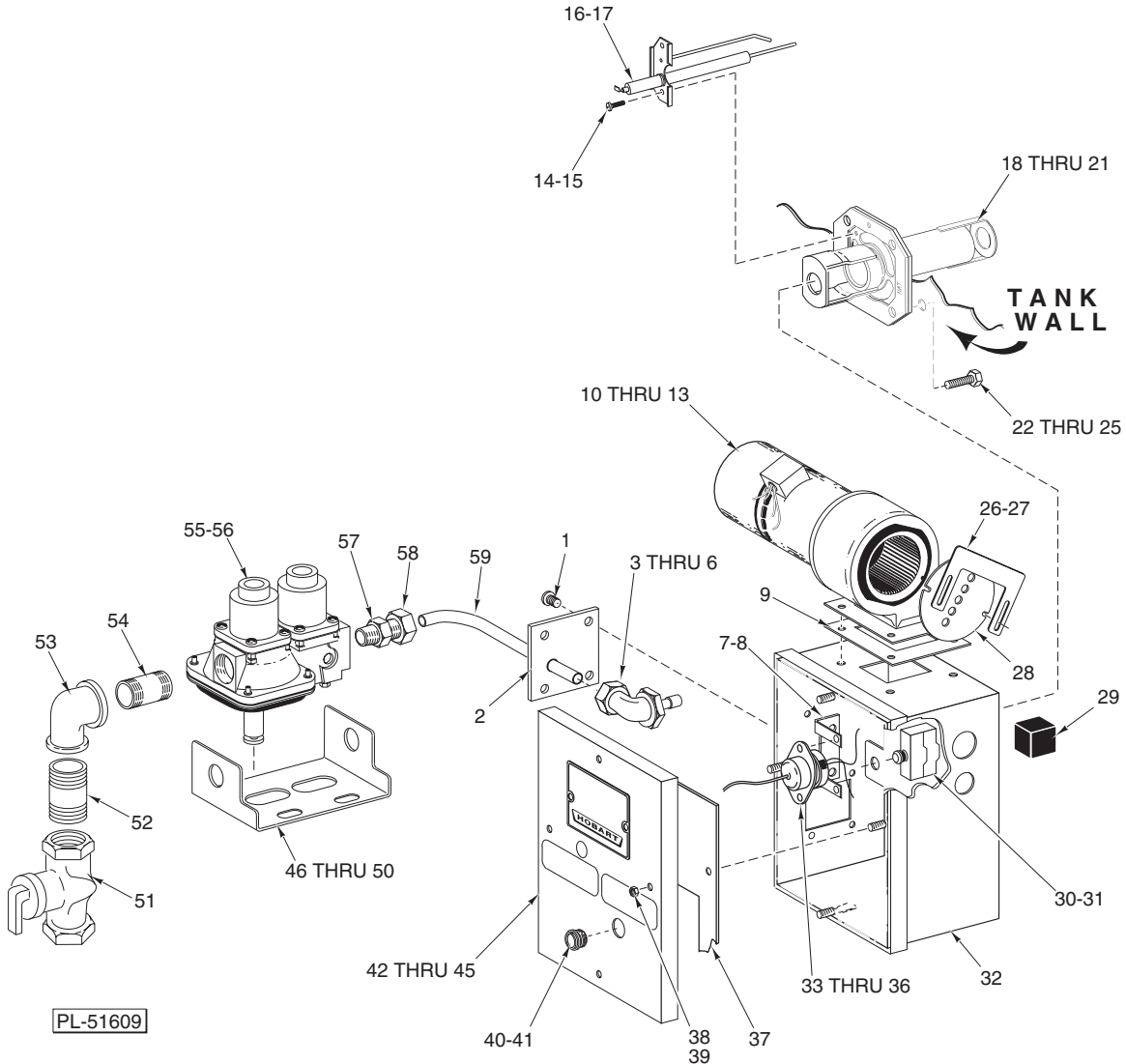
GAS HEAT CONTROL BOX

ILLUS. PL-51611	PART NO.	NAME OF PART	AMT.
1	SC-053-02	Mach. Screw 10-24 x 1/2 Truss Hd. (SST)	2
2	00-294436-00003	Block - Fuse	1
3	FE-021-19	Fuse (250 V., 3.2 Amp.)	1
4	SD-008-17	Self-Tapping Screw 6-20 x 3/8 Phil. Bndg. Hd., Type B	1
5	00-473501	Cover - Gas Heat Box	1
6	00-294325-014-1	Terminal Block	2
7	SC-021-15	Mach. Screw 8-32 x 1/2 Rd. Hd., Slotted	4
8	00-436853	Ignitor Board (24 VAC)	1
9	NS-031-50	Stop Nut 6-32 Hex (SST)	4
10	00-892110	Gas Heat Box	1
11	00-271146-00002	Cable - High Voltage	1
12	00-074348	Speed Nut 10-24	2
13	SC-041-10	Cap Screw 5/16-18 x 3/8 Hex Hd.	2
14	WL-006-23	Lockwasher 5/16 Medium (SST)	2
15	NS-015-11	Nut 5/16-18 Hex	2
	00-435538	Wire Harness - Ignitor Board	1



ELECTRIC HEAT

ILLUS.	PART NO.	NAME OF PART	AMT.
PL-57300			
1	00-119078-00006	Heater – Electric (100-120 V., 60 Hz., 1 Ph.) (Incls. Items 5, 7, 8, & 10) (Previous Construction).....	1
2	00-119078-00007	Heater – Electric (208-240 V., 60 Hz., 1 & 3 Ph.) (208-240V., 50 Hz., 3 Ph.) (Incls. Items 5, 7, 8, & 10).....	1
3	00-119078-00008	Heater – Electric (380-415 V., 50 Hz., 3 Ph.) (Incls. Items 5, 7, 8, & 10).....	1
4	00-119078-00009	Heater – Electric (480 V., 60 Hz., 3 Ph.) (Incls. Items 5, 7, 8, & 10).....	1
5	00-067500-00034	O-Ring (Heater) (Use W/Items 1, 2, 3, & 4).....	1
6	WL-006-32	Lockwasher ⁷ / ₁₆ Light.....	1
7	00-288543-00002	Jumper – Short.....	1
8	00-288543-00001	Jumper – Long.....	1
9	WL-014-07	Lockwasher #10 External Shakeproof (SST).....	AR
10	NS-024-06	Acorn Nut ⁷ / ₁₆ -20.....	AR
11	00-086444	Insulator – Terminal (Above 250 V.).....	1
12	NS-024-06	Acorn Nut ⁷ / ₁₆ -20.....	1

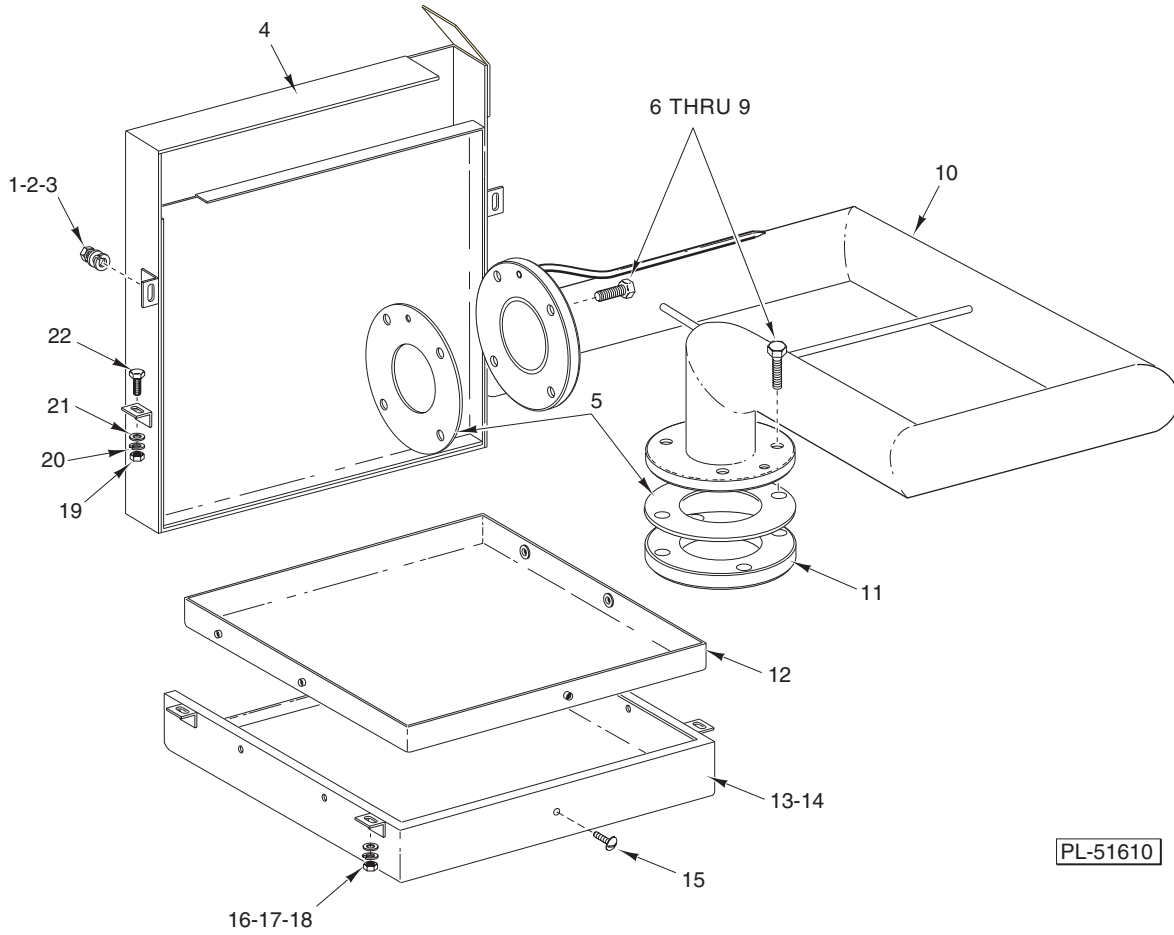


**GAS HEAT COMPONENTS
(CURRENT CONSTRUCTION)**

ILLUS.	PART NO.	NAME OF PART	AMT.
PL-51609			
1	SC-053-05	Mach. Screw 10-24 x 3/8 Truss Hd., Slotted	4
2	00-328440	Plate – Gas Line	1
3	00-435701-00002	Angle Fitting – LP Gas #43 Drill (0.089), 7/16 (NAT 60 Hz.)	1
4	00-435701-00002	Angle Fitting – LP Gas #43 Drill (0.089), 7/16 (NAT 50 Hz.) (ML-32614, ML32615, & ML-110025)	1
5	00-435701-00006	Angle Fitting 9/16 (PRO 60 Hz.)	1
6	00-435701-00005	Angle Fitting 7/16 (PRO 50 Hz.) (ML-32614, ML-32615, & ML-110025)	1
7	00-271122-00002	Bracket – Thermostat	1
8	SC-053-05	Mach. Screw 10-24 x 3/8 Truss Hd., Slotted	2
9	00-328473	Gasket – Blower	1
10	00-328476-00001	Blower – Motor & Switch	1

GAS HEAT COMPONENTS (CURRENT CONSTRUCTION)

ILLUS. PL-51609	PART NO.	NAME OF PART	AMT.
11	SC-041-05	Cap Screw 1/4-20 x 5/8 Hex Hd.	4
12	WL-014-10	Lockwasher 1/4 External Shakeproof	1
13	NS-031-21	Stop Nut – Special 1/4-20 Hex	4
14	SC-093-03	Mach. Screw 8-32 x 3/8 Phil. Pan Hd. (SST)	2
15	WL-014-05	Lockwasher #8 External Shakeproof	2
16	00-436792	Electrode – Spark/Sense (NAT)	1
17	00-436067	Electrode – Spark/Sense (PRO)	1
18	00-328649	Burner – Weldment (NAT, 60 Hz.)	1
19	00-473518	Burner – Weldment (NAT, 50 Hz.) (ML-32614, ML-32615, & ML-110025)	1
20	00-436761	Burner – Weldment (PRO, 60 Hz.)	1
21	00-473516	Burner – Weldment (PRO, 50 Hz.) (ML-32614, ML-32615, & ML-110025)	1
22	SC-121-43	Cap Screw 7/16-14 x 1 3/4 Hex Hd.	4
23	WS-021-07	Washer	8
24	WL-019-77	Lockwasher 7/16 Medium	4
25	NS-047-97	Nut 7/16-14 Hex	4
26	00-328428	Plate – Adjusting	1
27	SD-012-20	Self-Tapping Screw 8-32 x 1/2 Phil. Truss Hd., Type T	2
28	00-473505	Plate – Restrictor	1
29	00-328450	Plug – Rubber (Conduit)	4
30	00-087711-153-1	Switch – Limit	1
31	00-328508	Insulator – Switch	1
32	00-328465-00002	Box – Heat (LH)	1
33	00-271123	Protector – High Limit	1
34	SC-021-08	Mach. Screw 6-32 x 3/8 Rd. Hd. (SST)	2
35	NS-031-50	Stop Nut 6-32 Hex (SST)	2
36	00-293946	Sleeve – Lead	1
37	00-328429	Gasket – Heat Box Lid	1
38	WS-019-06	Washer	4
39	NS-031-16	Stop Nut 10-24 Hex Elastic (SST)	4
40	00-435024	Eye – Box (Gas Heat)	1
41	NS-035-25	Lock Nut 3/4-16 Palnut	1
42	00-473531-00001	Lid Assy. – Heat Box (NAT, 60 Hz.)	1
43	00-473531-00002	Lid Assy. – Heat Box (NAT, 50 Hz.) (ML-32614, ML-32615, & ML-110025)	1
44	00-473531-00003	Lid Assy. – Heat Box (PRO, 60 Hz.)	1
45	00-473531-00004	Lid Assy. – Heat Box (PRO, 50 Hz.) (ML-32614, ML-32615, & ML-110025)	1
46	00-473482	Bracket – Gas Valve Mounting	1
47	SC-041-10	Cap Screw 5/16-18 x 5/8 Hex Hd.	2
48	WS-017-08	Washer	2
49	WL-006-23	Lockwasher 5/16 Medium (SST)	2
50	NS-015-11	Nut 5/16-18 Hex	2
51	00-291988-00003	Valve – Gas Cock	1
52	FP-059-61	Pipe 1/2 x 1 1/4 Lg. TBE	1
53	FP-013-15	Elbow – Pipe 1/2 x 90 Deg.	1
54	FP-035-94	Pipe 1/2 x 1 1/2 Lg. TBE	1
55	00-473481-00001	Valve – Regulator (NAT Gas)	1
56	00-473481-00002	Valve – Regulator (PRO Gas)	1
57	FP-026-14	Bushing – 1/2 to 3/8	1
58	00-435702	Connector – Male 7/16	1
59	00-328425-00003	Tube – Gas	1
	00-294357-00001	Housing – Connector (NAT)	1
	00-294357-00002	Housing – Connector (Black)	1
	00-293940	Gas Electrode Kit	1
	00-328598	Kit – Hi-Limit Protector (Incls. Item 33)	1
	00-526454-00002	Tape – Foam	AR

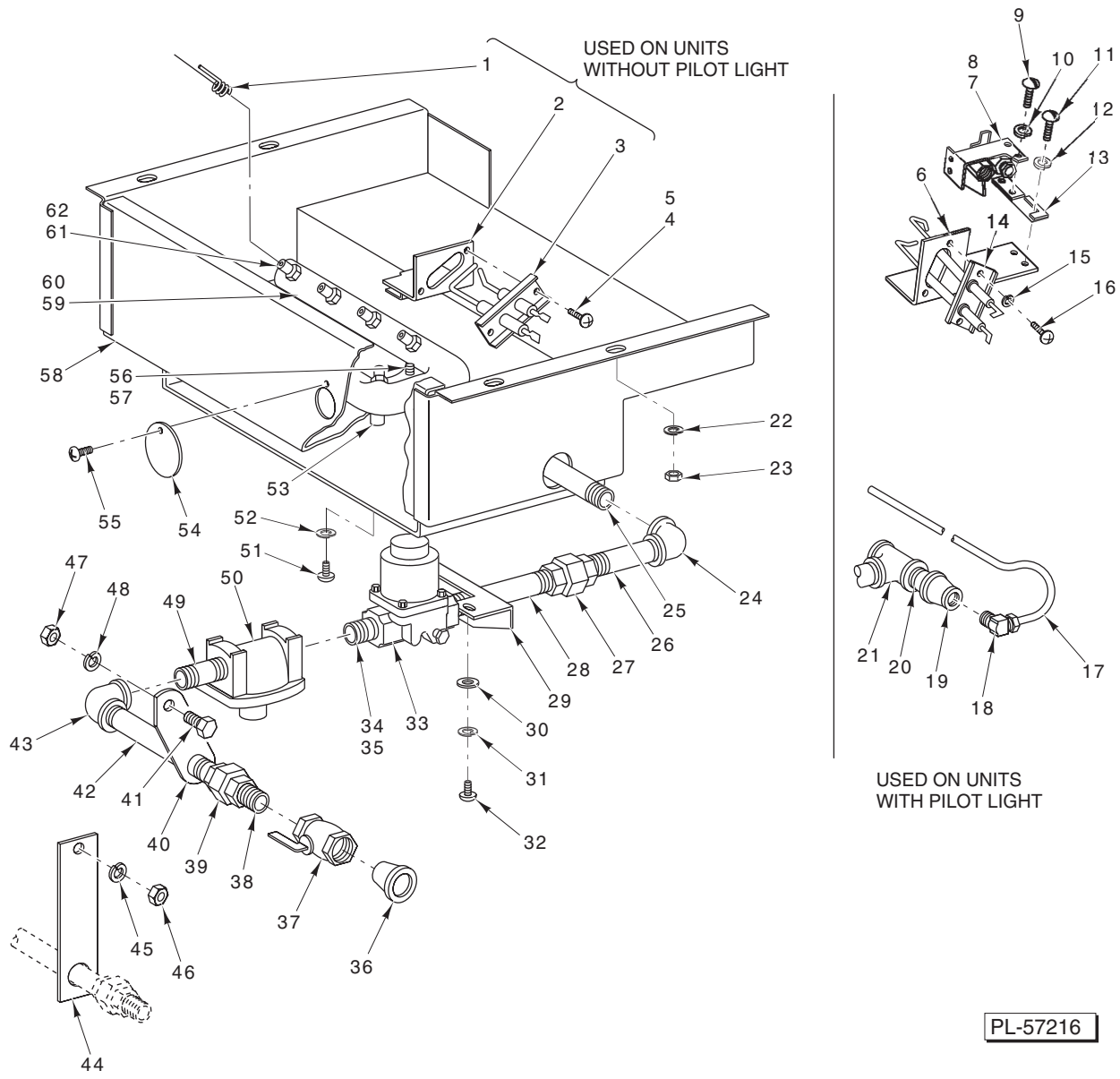


PL-51610

**GAS HEAT IMMERSION TUBE
SHROUD AND FLUE**

**GAS HEAT IMMERSION TUBE
SHROUD AND FLUE**

ILLUS.	PART NO.	NAME OF PART	AMT.
PL-51610			
1	WS-017-06	Washer	2
2	WL-006-17	Lockwasher 1/4 Medium	2
3	NS-015-01	Nut 1/4-20 Hex (SST)	2
4	00-473494	Flue – Weldment	1
5	00-436100	Gasket – Immersion Tube	2
6	SC-121-43	Cap Screw 7/16-14 x 1 3/4 Hex Hd.	8
7	WS-021-07	Washer	16
8	WL-019-77	Lockwasher 7/16 Medium	8
9	NS-047-97	Nut 7/16-14 Hex	8
10	00-473123	Tube – Immersion	1
11	00-435952	Flange – Immersion Tube	1
12	00-473487-00001	Liner – Shroud	1
13	00-473485-00001	Shroud – Weldment	1
14	00-473488	Insulation – Shroud	1
15	SC-053-02	Mach. Screw 10-24 x 1/2 Truss Hd. (SST)	5
16	WS-017-06	Washer	4
17	WL-006-17	Lockwasher 1/4 Medium	4
18	NS-015-01	Nut 1/4-20 Hex (SST)	4
19	NS-015-11	Nut 5/16-18 Hex	2
20	WL-006-23	Lockwasher 5/16 Medium (SST)	2
21	WS-017-08	Washer	2
22	SC-041-10	Cap Screw 5/16-18 x 5/8 Hex Hd.	2
	00-474152	Shroud Assy. (Incls. Items 12 thru 15)	1



**GAS BURNER
(PREVIOUS CONSTRUCTION)**

ILLUS.	PART NO.	NAME OF PART	AMT.
PL-57216			
1	00-293037	Electrode – Grounding.....	8
2	00-293038	Support – Electrode.....	1
3	00-293039	Electrode Assy.....	1
4	SC-021-91	Mach. Screw 8-32 x 5/16 Rd. Hd.	2
5	WL-006-01	Lockwasher #8 Light.....	2
6	*	Support – Pilot.....	1
7	00-105045-00001	Pilot (NAT or Mixed Gas).....	1
8	00-105045-00002	Pilot (LP Gas).....	1

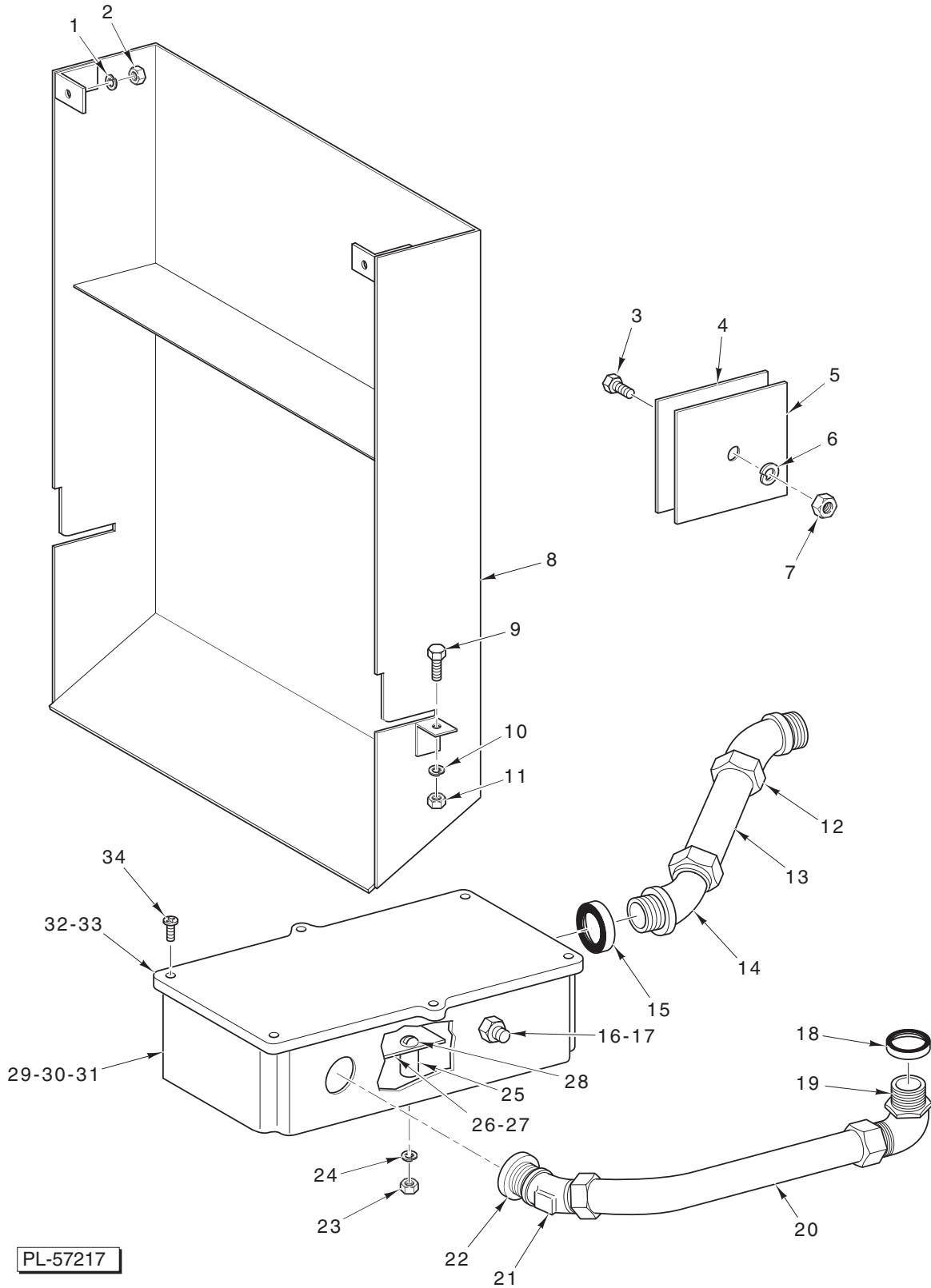
GAS BURNER (PREVIOUS CONSTRUCTION)

ILLUS. PL-57216	PART NO.	NAME OF PART	AMT.
9	SC-021-80	Mach. Screw 10-32 x $\frac{3}{8}$ Rd. Hd.....	2
10	WL-006-07	Lockwasher #10 Medium	2
11	SC-021-80	Mach. Screw 10-32 x $\frac{3}{8}$ Rd. Hd.....	2
12	WL-006-07	Lockwasher #10 Medium	2
13	*	Bracket – Pilot Support	1
14	*	Electrode Assy.	1
15	WL-006-01	Lockwasher #8 Light.....	2
16	SC-021-91	Mach. Screw 8-32 x $\frac{5}{16}$ Rd. Hd.	2
17	00-023963-00011	Tube $\frac{1}{4}$ In. O.D. (Gas)	1
18	FP-012-21	Elbow 90 Deg. ($\frac{1}{8}$ Male Pipe x $\frac{1}{4}$ Tube)	1
19	FP-024-45	Coupling – $\frac{3}{8}$ to $\frac{1}{8}$ Reducing	1
20	FP-035-46	Pipe $\frac{3}{8}$ x 1 Lg. TBE	1
21	FP-019-10	Tee $\frac{3}{8}$	1
22	WL-006-17	Lockwasher $\frac{1}{4}$ Medium	4
23	NS-015-01	Nut $\frac{1}{4}$ -20 Hex Fin.	4
24	FP-013-11	Elbow $\frac{3}{8}$ x 90 Deg.	1
25	FP-035-63	Pipe $\frac{3}{8}$ x $4\frac{1}{2}$ Lg. TBE	1
26	FP-035-60	Pipe $\frac{3}{8}$ x $3\frac{1}{4}$ Lg. TBE	1
27	FP-022-06	Union $\frac{3}{8}$	1
28	FP-035-61	Pipe $\frac{3}{8}$ x $3\frac{1}{2}$ Lg. TBE	1
29	00-277809	Bracket – Control Box Mounting	2
30	WS-019-06	Washer	4
31	WL-006-06	Lockwasher #10 Light.....	4
32	SC-021-22	Mach. Screw 10-24 x $\frac{3}{8}$ Rd. Hd.....	4
33	00-288967	Gauge – Gas Valve Assy. (115 V., 60 Hz.).....	1
34	FP-035-46	Pipe $\frac{3}{8}$ x 1 Lg. TBE (NAT or Mixed Gas)	1
35	FP-035-62	Pipe $\frac{3}{8}$ x $4\frac{1}{8}$ Lg. TBE (LP Gas)	1
36	00-119298	Plug – Pipe	1
37	00-291988-00002	Valve, Gas Cock $\frac{3}{8}$ (Lever Handle)	1
38	FP-035-46	Pipe $\frac{3}{8}$ x 1 Lg. TBE	1
39	FP-022-06	Union $\frac{3}{8}$	1
**40	00-119278	Support – Pipe	1
**41	SC-041-10	Cap Screw $\frac{5}{16}$ -18 x $\frac{5}{8}$ Hex Hd.	1
42	FP-035-65	Pipe $\frac{3}{8}$ x $5\frac{1}{8}$ Lg. TBE	1
43	FP-013-11	Elbow $\frac{3}{8}$ x 90 Deg.	1
***44	00-119301	Bracket – Pipe Support.....	1
***45	WL-006-17	Lockwasher $\frac{1}{4}$ Medium	1
***46	NS-015-01	Nut $\frac{1}{4}$ -20 Hex Fin.	1
**47	NS-015-11	Nut $\frac{5}{16}$ -18 Hex Fin.	1
**48	WL-006-23	Lockwasher $\frac{9}{16}$ Medium	1
49	FP-035-49	Pipe $\frac{3}{8}$ x $1\frac{1}{2}$ Lg. TBE (NAT or Mixed Gas).....	1
50	00-435400	Regulator – Pressure (NAT or Mixed Gas) (Service Kit)	1
51	SC-021-44	Mach. Screw $\frac{1}{4}$ -20 x $1\frac{1}{2}$ Rd. Hd.	1
52	WL-006-17	Lockwasher $\frac{1}{4}$ Medium	1
53	00-119151	Spacer – Burner	1
54	00-119171	Cover – Pilot Hole	1
55	SD-008-18	Self-Tapping Screw 8 x $\frac{3}{8}$ Phil. Bndg. Hd., Type B.....	1
56	SC-021-23	Mach. Screw 10-24 x $\frac{1}{2}$ Rd. Hd.....	2
57	WL-006-07	Lockwasher #10 Medium	2
58	00-119146	Burner Housing Assy.	1
59	00-105172-00001	Gas Burner Assy. (NAT or Mixed Gas) (Incls. Item 61)	1
60	00-105172-00002	Gas Burner Assy. (LP Gas) (Incls. Item 62).....	1
61	00-105763-00001	Jet – Gas Burner (NAT or Mixed Gas)	8
62	00-105763-00004	Jet – Gas Burner (LP Gas)	8
	00-120419-00001	Coil – Solenoid Valve (Pen Control Valve).....	1
	00-288967	Coil – Solenoid Valve (White-Rodgers Valve)	1

* Not available, order Gas Electrode Kit 293940

** RH Controls

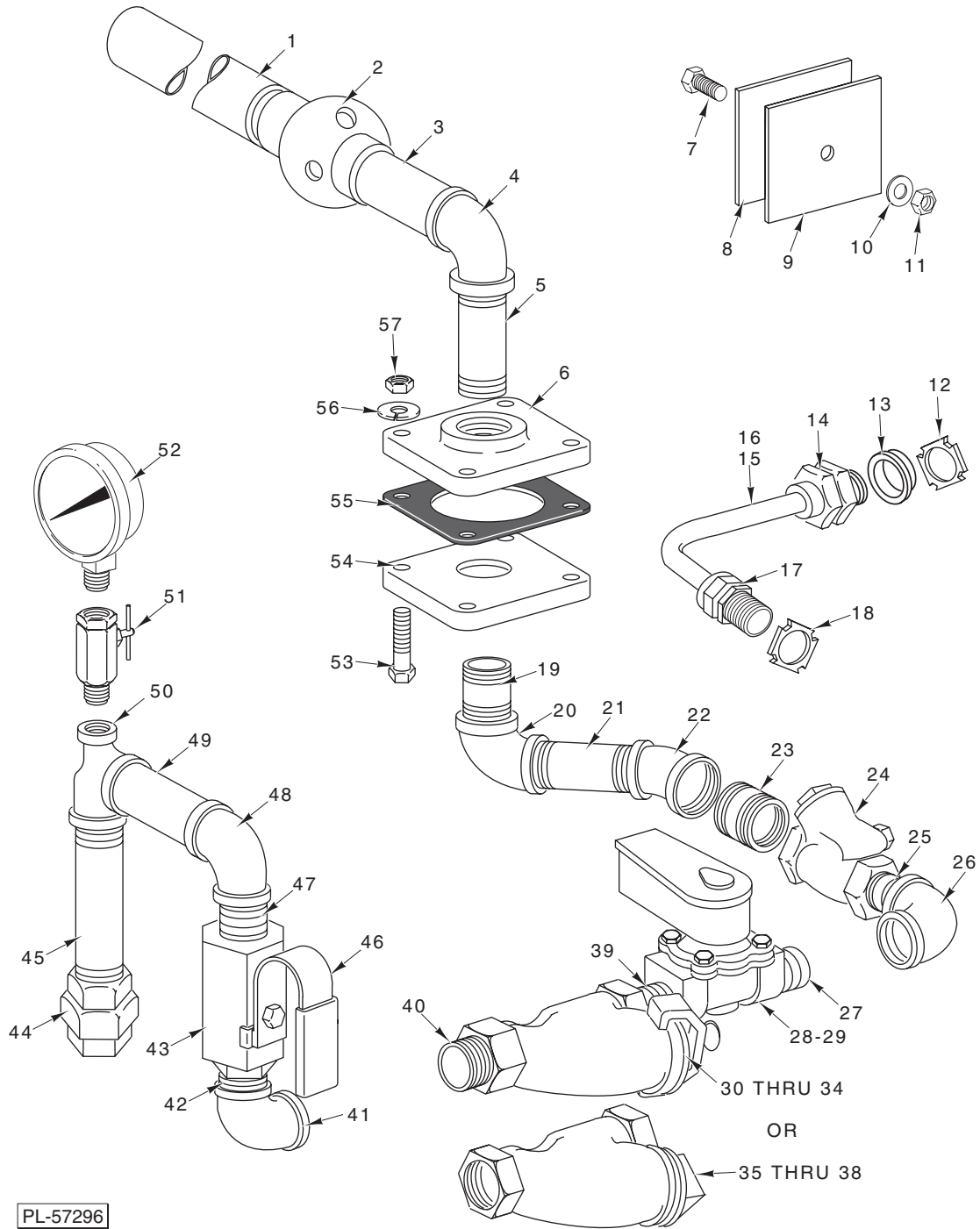
***LH Controls



**FLUE AND IGNITER CONTROL (GAS HEAT)
(PREVIOUS CONSTRUCTION)**

**FLUE AND IGNITER CONTROL (GAS HEAT)
(PREVIOUS CONSTRUCTION)**

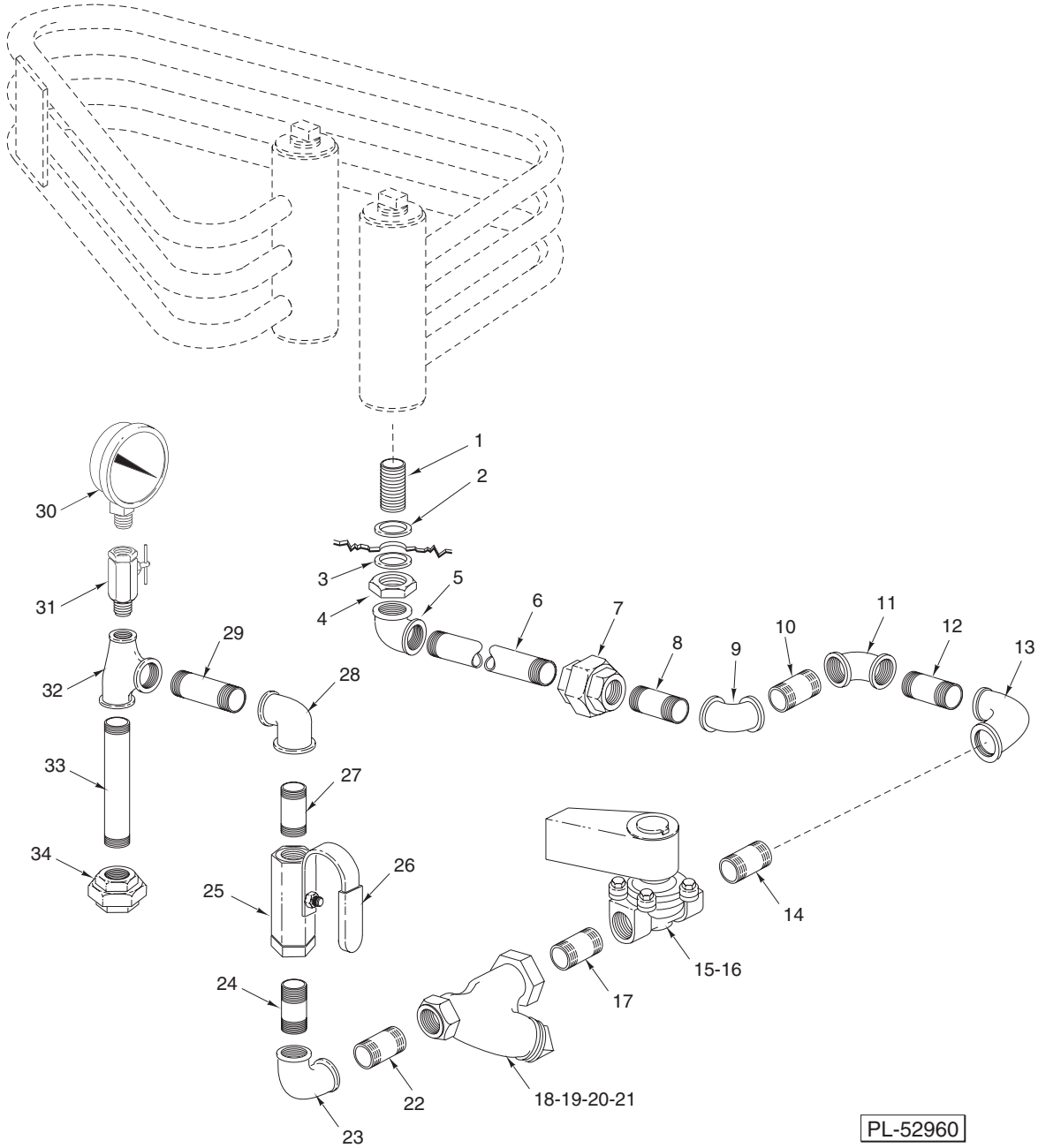
ILLUS. PL-57217	PART NO.	NAME OF PART	AMT.
1	WL-006-22	Lockwasher ⁵ / ₁₆ Light	2
2	NS-015-11	Nut ⁵ / ₁₆ -18 Hex Fin.	2
3	SC-041-28	Cap Screw ³ / ₈ -16 x ³ / ₄ Hex Hd.	1
4	00-119152	Gasket – Cover Plate	1
5	00-119153	Plate – Electric Heater Cover	1
6	WL-006-27	Lockwasher ³ / ₈ Light	1
7	NS-015-13	Nut ³ / ₈ -16 Hex Fin.	1
8	00-119090	Flue Assy.	1
9	SC-041-11	Cap Screw ⁵ / ₁₆ -18 x ³ / ₄ Hex Hd.	2
10	WL-006-23	Lockwasher ⁵ / ₁₆ Medium	2
11	NS-015-11	Nut ⁵ / ₁₆ -18 Hex Fin.	2
12	FE-024-62	Connector 45 Deg. (³ / ₄ Male Thd. x ³ / ₄ Thinwall)	1
13	00-072654-00013	Conduit ³ / ₄ x 2 (Thinwall)	1
14	FE-008-44	Connector 45 Deg. (³ / ₄ Male Thd. x ³ / ₄ Thinwall)	1
15	FE-008-11	³ / ₄ Gasket Assy.	1
16	00-121040	Switch – Thermal	1
17	WL-008-27	Lockwasher ³ / ₈ Internal Shakeproof	1
18	FE-008-10	¹ / ₂ Gasket Assy.	1
19	FE-007-07	Connector 90 Deg. Sealtite (¹ / ₂ Male Thd. x ¹ / ₂ Flex. Cnd.)	1
20	00-077658-00045	Conduit ¹ / ₂ x 12 Lg. (Waterproof)	1
21	FE-007-05	Connector 45 Deg. Sealtite (¹ / ₂ Male Thd. x ¹ / ₂ Flex. Cnd.)	1
22	FE-008-10	¹ / ₂ Gasket Assy.	1
23	NS-009-12	Mach. Nut 8-32 Hex	3
24	WL-003-12	Lockwasher #8 Medium	3
25	00-121027	Spacer – Control Board	3
26	00-892611	Gas Heat Igniter Circuit Assy. (Service Kit)	1
27	00-119282	Insulator (Igniter Circuit)	1
28	SC-007-49	Mach. Screw 8-32 x ¹ / ₈ Rd. Hd.	3
29	00-288469	Box – Control	1
30	FE-006-05	Lock Nut ¹ / ₂ Conduit	2
31	FE-006-51	Lock Nut ³ / ₄ Conduit	2
32	00-289146-00002	Lid & Gasket Assy. (Incls. Item 33)	1
33	00-112005	Gasket (Lid)	1
34	SD-012-20	Self-Tapping Screw 8-32 x ¹ / ₂ Phil. Truss Hd., Type T	6



**STEAM INJECTOR
(ML-32614, ML-32615, & ML-110025)**

STEAM INJECTOR
(ML-32614, ML-32615, & ML-110025)

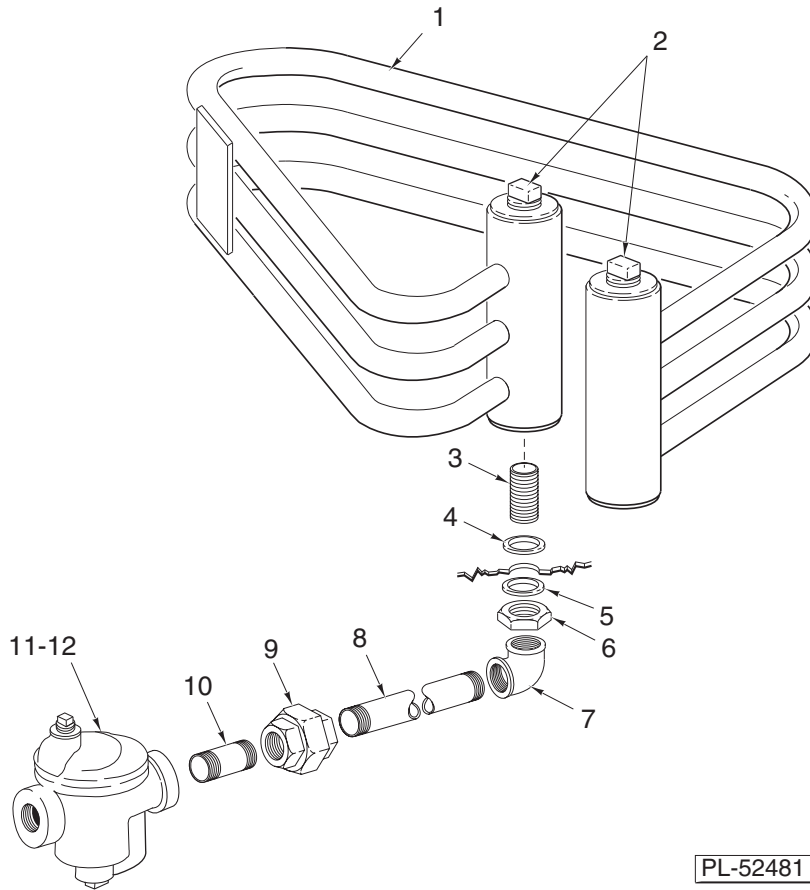
ILLUS. PL-57296	PART NO.	NAME OF PART	AMT.
1	FP-054-35	Pipe 1 x 10 Lg. (STOE).....	1
2	00-288671	Heater – Water	1
3	FP-054-44	Pipe 3/4 x 2 1/2 TBE (SST)	1
4	FP-049-15	Elbow 3/4 x 90° (SST)	1
5	FP-054-30	Pipe 3/4 x 3 Lg. TBE	1
6	00-067039-00002	Plate – Adapter	1
7	SC-041-28	Cap Screw 3/8-16 x 3/4 Hex Hd.	1
8	00-119152	Gasket – Cover Plate	1
9	00-119153	Plate – Cover	1
10	WL-006-27	Lockwasher 3/8 Light	1
11	NS-015-13	Nut 3/8-16 Hex (SST)	1
12	FE-006-05	Lock Nut 1/2	1
13	FE-008-10	1/2 Gasket Assy.	1
14	FE-022-84	Connector – Strain Relief	1
15	00-294527	Cable Assy. (RH Controls)	1
16	00-294528	Cable Assy. (LH Controls)	1
17	FE-022-84	Connector – Strain Relief	1
18	FE-006-05	Lock Nut 1/2	1
19	FP-036-92	Pipe 3/4 x 1 3/8 TBE	1
20	FP-013-22	Elbow 3/4 x 90 Deg.	1
21	FP-036-05	Pipe 3/4 x 3 TBE	1
22	FP-013-20	Elbow 3/4 x 45 Deg.	1
23	FP-036-92	Pipe 3/4 x 1 3/8 TBE	1
24	00-074696	Check Valve 3/4	1
25	FP-036-92	Pipe 3/4 x 1 3/8 TBE	1
26	FP-013-22	Elbow 3/4 x 90 Deg.	1
27	FP-036-92	Pipe 3/4 x 1 3/8 TBE	1
28	00-270329-00003	Solenoid Valve 3/4 (Piston Valve; Gray Cover) (Incls. Item 29)	1
29	00-270318-00003	Coil – Solenoid Valve	1
30	00-186922	Line Strainer 3/4 In. (Incls. Items 31 thru 35)	1
31	00-082231	Screen – 3/4 In. Line Strainer	1
32	00-082234	Plate-Seal (3/4 In. Line Strainer) (Zinc Plated)	1
33	00-082238	Thumb Screw	1
34	00-067500-00009	O-Ring	1
35	00-186922	Strainer – Line 3/4 In. (Brass) (Incls. Items 36, 37, & 38)	1
36	00-186925	Screen – (3/4 In. Line Strainer)	1
37	00-186924	Gasket (3/4 In. Line Strainer)	1
38	00-186923	Plug – Branch (3/4 In. Line Strainer)	1
39	FP-036-92	Pipe 3/4 x 1 3/8 TBE	1
40	FP-036-92	Pipe 3/4 x 1 3/8 TBE	1
41	FP-013-22	Elbow 3/4 x 90 Deg.	1
42	FP-036-92	Pipe 3/4 x 1 3/8 TBE	1
43	00-292385	Valve 3/4 Ball	1
44	FP-022-17	Union 3/4 (Grd. Seat)	1
45	FP-036-10	Pipe 3/4 x 4 3/4 Lg. TBE	1
46	00-289782-00003	Sleeve – Ball Valve Handle	1
47	FP-036-92	Pipe 3/4 x 1 3/8 TBE	1
48	FP-013-22	Elbow 3/4 x 90 Deg.	1
49	FP-036-06	Pipe 3/4 x 3 1/2 Lg. TBE	1
50	FP-019-79	Tee 3/4 x 1/4 x 3/4 Reducing	1
51	00-473041	Valve – Ball (1/4 Turn)	1
52	00-328247	Gauge – Water Pressure	1
53	SC-041-17	Cap Screw 5/16-18 x 1 1/2 Hex Hd. (SST)	4
54	00-067039-00002	Plate – Adapter	1
55	00-067036	Gasket – Adapter Plate	1
56	WL-006-22	Lockwasher 5/16 Light	4
57	NS-018-06	Jam Nut 3/16-18 Hex	4
	00-270336	Service Kit – Solenoid Valve (Piston Valve; Gray Cover)	1
	00-083376	Wire Tie	2



**STEAM COIL PIPING
(ML-32614, ML-32615, & ML-110025)**

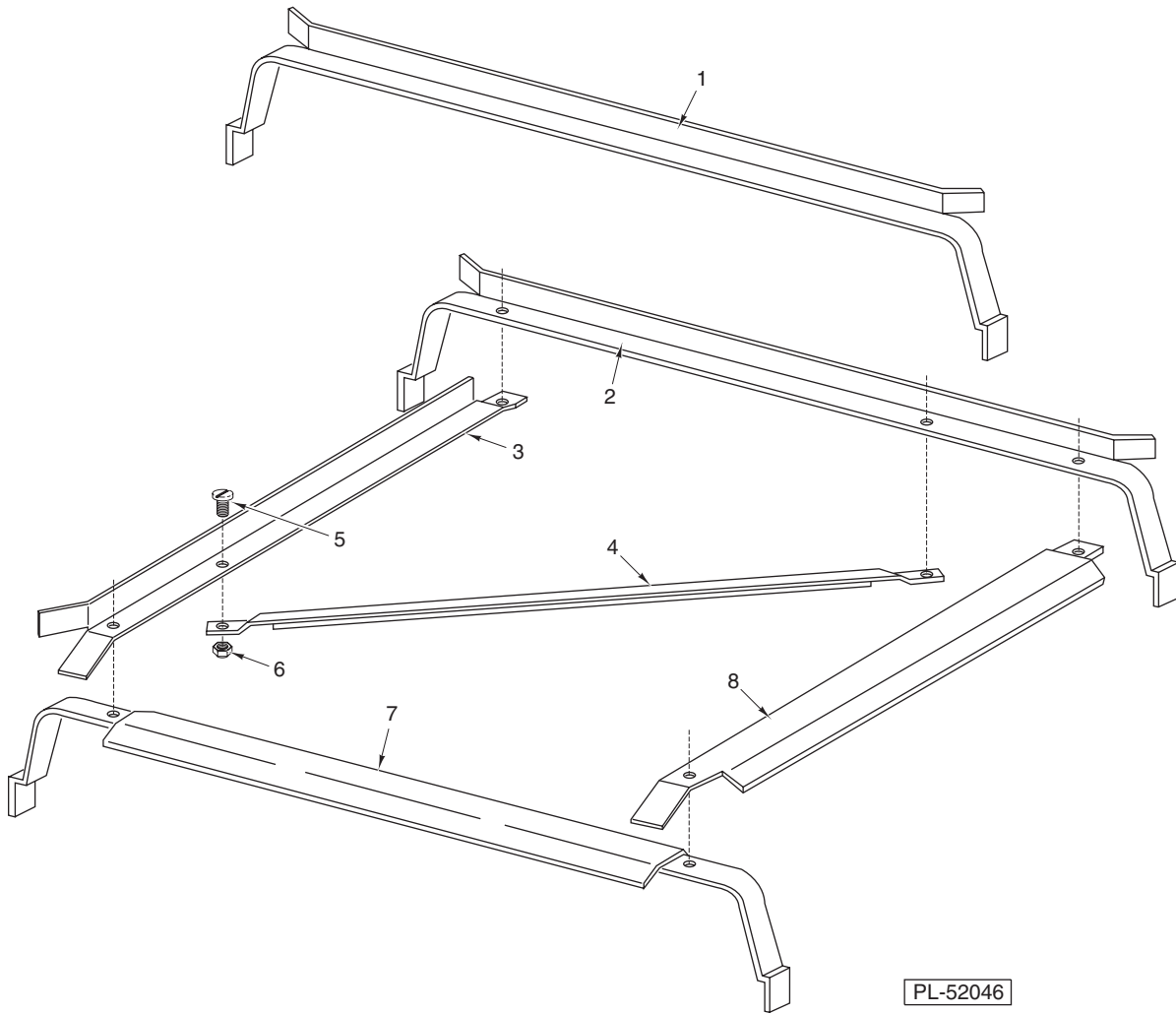
STEAM COIL PIPING
(ML-32614, ML-32615, & ML-110025)

ILLUS. PL-52960	PART NO.	NAME OF PART	AMT.
1	FP-080-17	Pipe $\frac{3}{4}$ x 2 TBE ($1\frac{1}{2}$ RTOE) (SST)	1
2	WS-013-45	Washer	1
3	WS-013-45	Washer	1
4	FP-053-09	Lock Nut $\frac{3}{4}$ NPSL (SST)	1
5	FP-013-22	Elbow $\frac{3}{4}$ x 90 Deg.	1
6	FP-036-92	Pipe $\frac{3}{4}$ x $1\frac{3}{8}$ TBE	1
7	FP-022-17	Union $\frac{3}{4}$ (Grd. Seat)	1
8	FP-059-14	Pipe $\frac{3}{4}$ x $4\frac{1}{2}$ TBE	1
9	FP-013-20	Elbow $\frac{3}{4}$ x 45 Deg.	1
10	FP-036-92	Pipe $\frac{3}{4}$ x $1\frac{3}{8}$ TBE	1
11	FP-013-20	Elbow $\frac{3}{4}$ x 45 Deg.	1
12	FP-036-87	Pipe $\frac{3}{4}$ x $4\frac{1}{4}$ TBE	1
13	FP-013-22	Elbow $\frac{3}{4}$ x 90 Deg.	1
14	FP-036-92	Pipe $\frac{3}{4}$ x $1\frac{3}{8}$ TBE	1
15	00-270329-00003	Solenoid Valve (Incls. Item 16)	1
16	00-270318-00003	Coil – Solenoid Valve	1
17	FP-036-92	Pipe $\frac{3}{4}$ x $1\frac{3}{8}$ TBE	1
18	00-186922	Strainer – Line $\frac{3}{4}$ In. Brass (Incls. Items 19, 20, & 21)	1
19	00-186923	Plug – Branch $\frac{3}{4}$ In. Line Strainer)	1
20	00-186924	Gasket ($\frac{3}{4}$ In. Line Strainer)	1
21	00-186925	Screen ($\frac{3}{4}$ In. Line Strainer)	1
22	FP-036-92	Pipe $\frac{3}{4}$ x $1\frac{3}{8}$ TBE	1
23	FP-013-22	Elbow $\frac{3}{4}$ x 90 Deg.	1
24	FP-036-92	Pipe $\frac{3}{4}$ x $1\frac{3}{8}$ TBE	1
25	00-292385	Valve $\frac{3}{4}$ Ball	1
26	00-289782-00003	Sleeve – Ball Valve Handle	1
27	FP-036-92	Pipe $\frac{3}{4}$ x $1\frac{3}{8}$ TBE	1
28	FP-013-22	Elbow $\frac{3}{4}$ x 90 Deg.	1
29	FP-036-06	Pipe $\frac{3}{4}$ x $3\frac{1}{2}$ Lg. TBE	1
30	00-328247	Gauge – Water Pressure	1
31	00-473041	Valve – Ball ($\frac{1}{4}$ Turn)	1
32	FP-019-79	Tee $\frac{3}{4}$ x $\frac{1}{4}$ x $\frac{3}{4}$ Reducing	1
33	FP-036-10	Pipe $\frac{3}{4}$ x $4\frac{3}{4}$ Lg. TBE	1
34	FP-022-17	Union $\frac{3}{4}$ (Grd. Seat)	1
	00-370336	Service Kit – Solenoid Valve (Piston Valve; Gray Cover)	1



**STEAM COILS
(ML-32614, ML-32615, & ML-110025)**

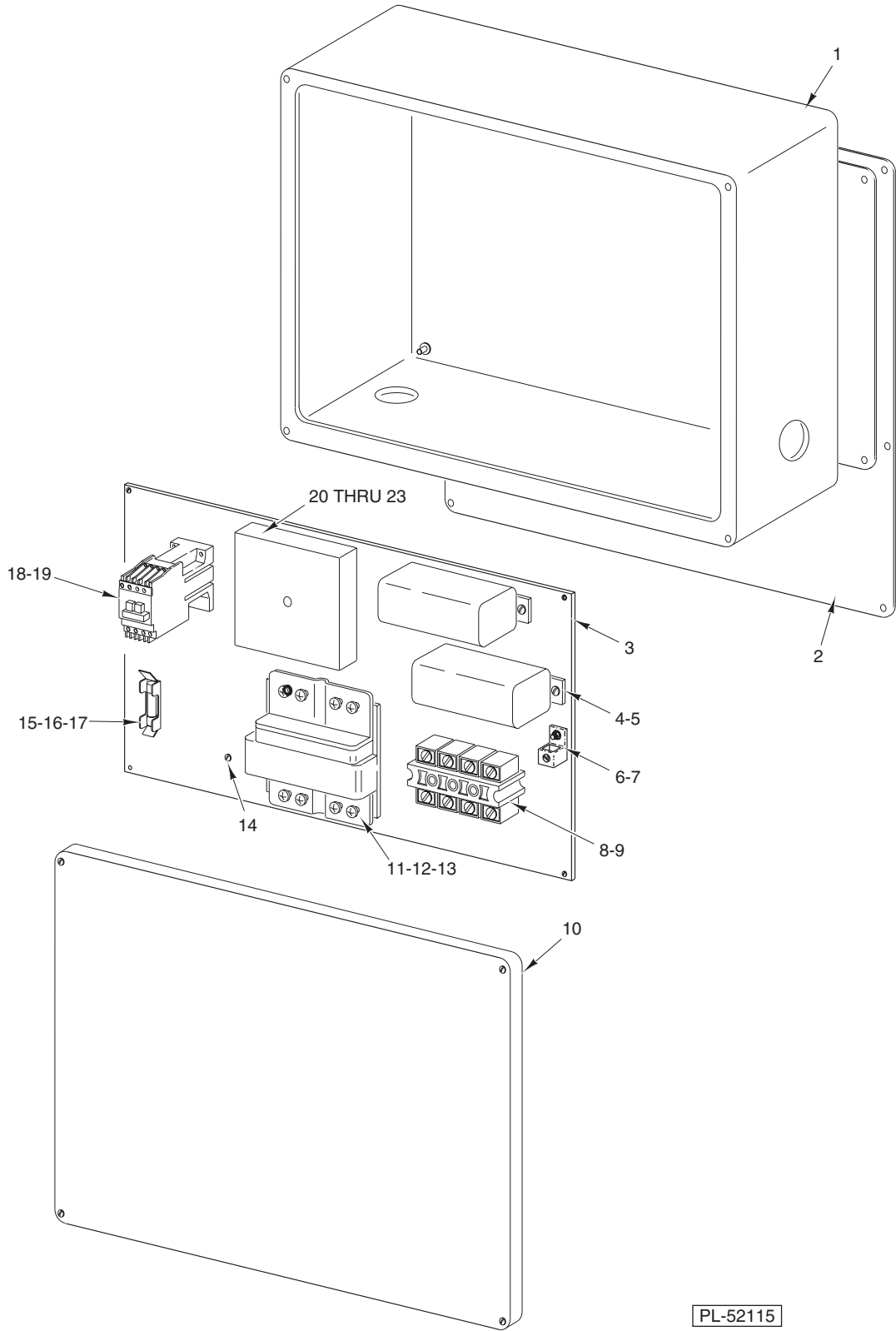
ILLUS.	PART NO.	NAME OF PART	AMT.
	PL-52481		
1	00-475013	Coil – Steam	1
2	FP-052-09	Pipe Plug $\frac{3}{4}$ Sq. Hd. (SST)	2
3	FP-080-17	Pipe $\frac{3}{4}$ x 2 TBE ($1\frac{1}{2}$ RTOE) (SST)	1
4	WS-013-45	Washer	1
5	WS-013-45	Washer	1
6	FP-053-09	Lock Nut $\frac{3}{4}$ NPSL (SST)	1
7	FP-013-22	Elbow $\frac{3}{4}$ x 90 Deg.	1
8	FP-059-64	Pipe $\frac{3}{4}$ x $5\frac{1}{2}$ TBE	1
9	FP-022-17	Union $\frac{3}{4}$ (Grd. Seat)	1
10	FP-036-92	Pipe $\frac{3}{4}$ x $1\frac{3}{8}$ TBE	1
11	00-118316	Steam Trap (0-20 PSI)	1
12	00-118317	Steam Trap (21-50 PSI)	1



TRACK UNIT

ILLUS.	PART NO.	NAME OF PART	AMT.
PL-52046			
*1	00-119084	Track - Rack	2
**2	00-119080	Track - Rear Rack	1
**3	00-074527	Track - LH Rack	1
**4	00-119129	Support - Track	1
**5	SC-022-27	Mach. Screw 12-24 x ⁵ / ₈ Flat Hd.	6
**6	NS-036-05	Stop Nut 12-24 Elastic	6
**7	00-119093-00001	Track - Front Rack	1
**8	00-074528	Track - RH Rack	1

* Straight Thru Installation
 **Corner Installation

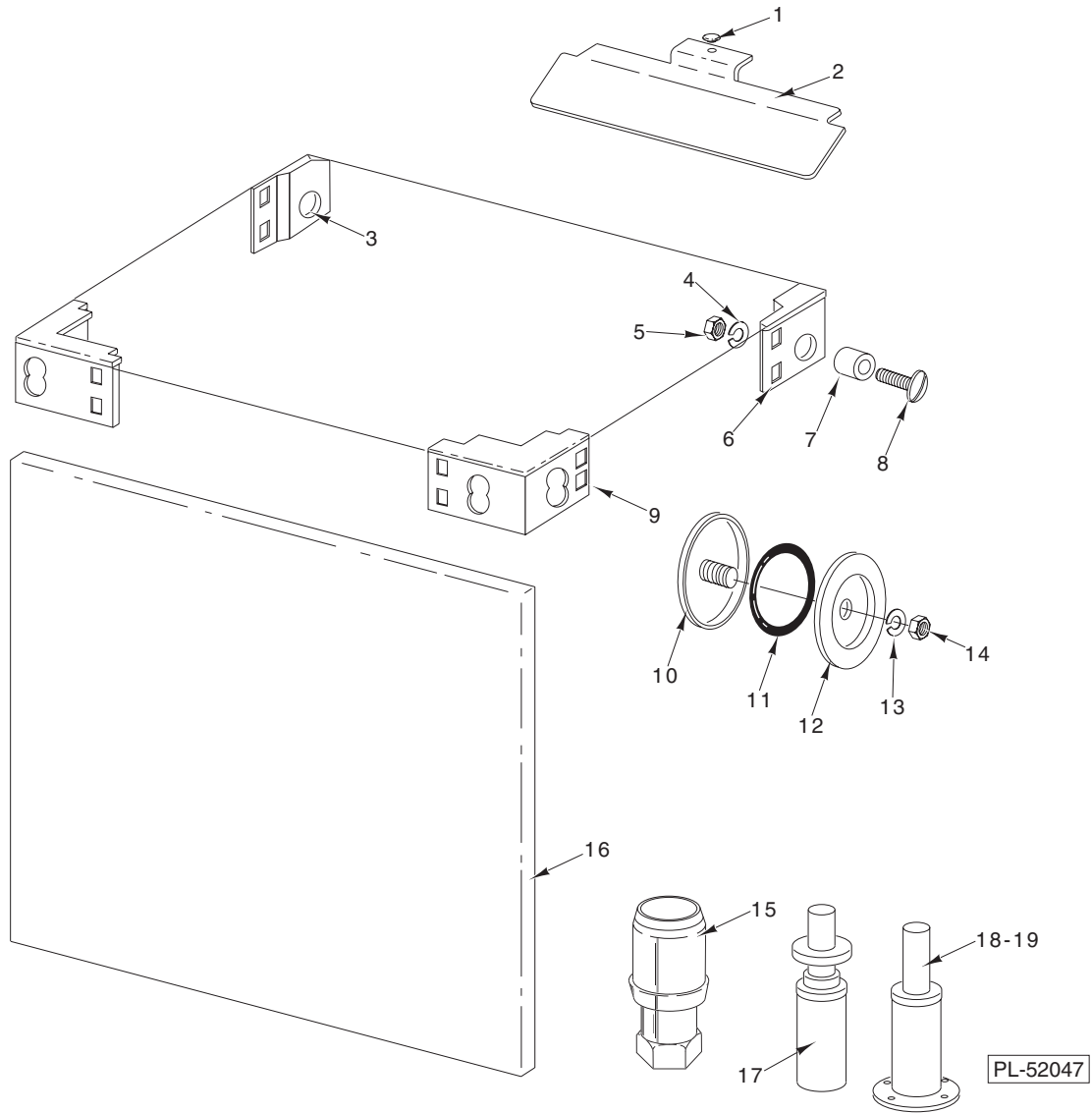


PL-52115

**VENT FAN CONTROL
(PREVIOUS CONSTRUCTION)**

**VENT FAN CONTROL
(PREVIOUS CONSTRUCTION)**

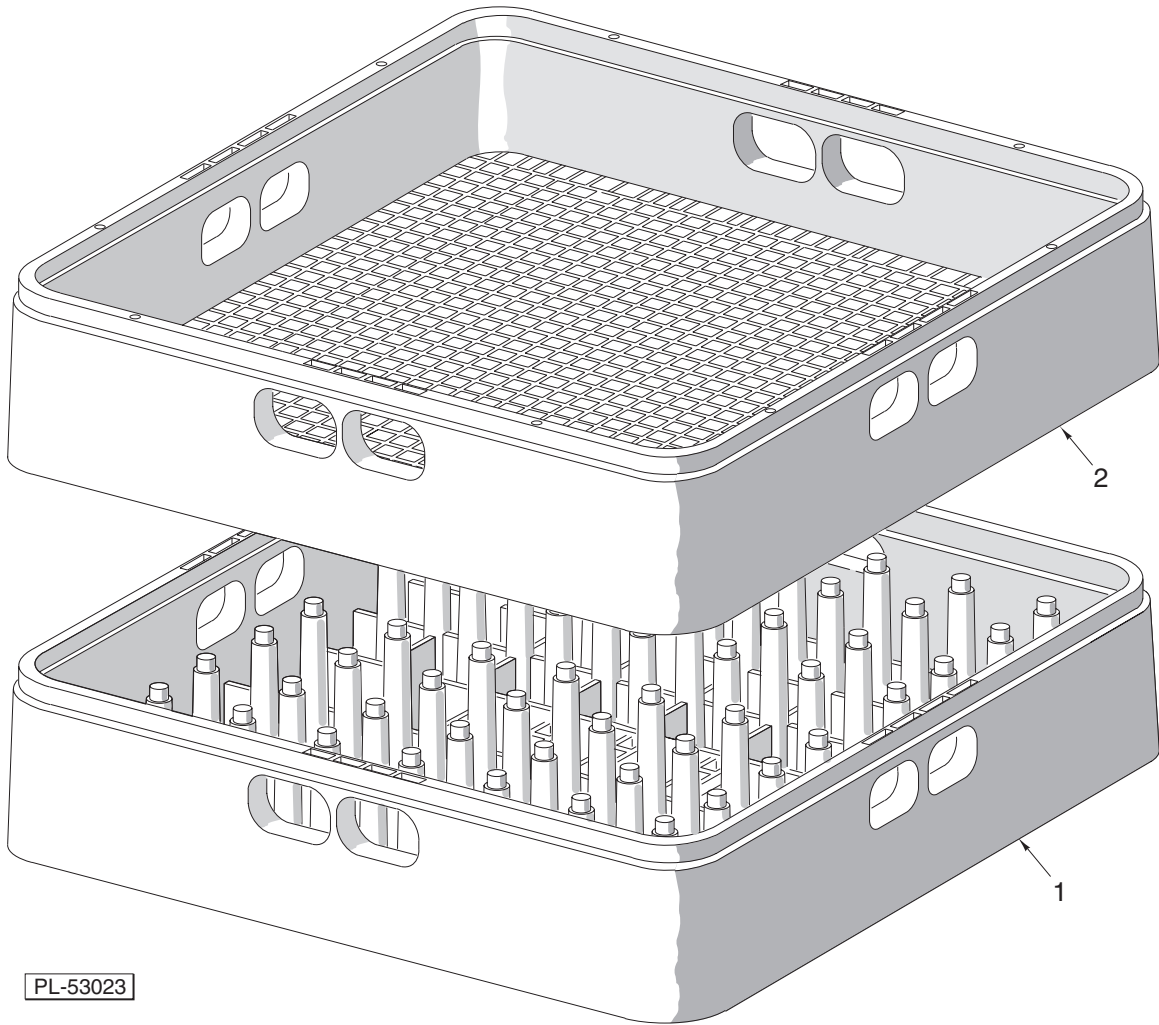
ILLUS. PL-52115	PART NO.	NAME OF PART	AMT.
1	00-473429	Box – Electrical (Incls. Lid)	1
2	00-473437	Bracket – Control Panel	1
3	00-473427	Plate – Base	1
4	00-087714-007-1	Relay 24 VAC (DPDT) (Steam/Electric Heat)	1
5	SD-008-18	Self-Tapping Screw 8-18 x 3/8 Phil. Bndg. Hd., Type B	1
6	00-118544-00001	Lug – Solderless	1
7	SD-008-25	Self-Tapping Screw 10-16 x 1/2 Phil. Pan Hd., Type B	1
8	00-294325-013-4	Block – Terminal (Under 250 V.)	1
9	SD-019-29	Self-Tapping Screw 6-20 x 1/2 Phil. Pan Hd., Type B	1
10	SC-041-05	Cap Screw 1/4-20 x 5/8 Hex Hd.	1
11	00-294500-00028	Transformer (50 VA.) (3 Ph.) (W/Electric Booster; Hi-Volt)	1
12	SD-008-25	Self-Tapping Screw 10-16 x 1/2 Phil. Pan Hd., Type B	1
13	WL-007-12	Lockwasher #10 External Shakeproof	1
14	SD-008-18	Self-Tapping Screw 8-18 x 3/8 Phil. Bndg. Hd., Type B	1
15	00-294436-00003	Block – Fuse	1
16	FE-022-28	Fuse (250 V., 0.5 Amp.)	1
17	SD-008-17	Self-Tapping Screw 6-20 x 3/8 Phil. Bndg. Hd., Type B	1
18	00-087713-086-1	Contact – Double Pole	1
19	SD-008-25	Self-Tapping Screw 10-16 x 1/2 Phil. Pan Hd., Type B	1
20	00-087714-00036	Relay Time Delay (Variable)	1
21	SD-036-13	Self-Tapping Screw 1/4-20 x 1 1/4 Hex Washer Hd., Type T	1
22	WL-007-15	Lockwasher 1/2 External Shakeproof	1
23	00-437070-00001	Plug-On Module	1



MISCELLANEOUS

MISCELLANEOUS

ILLUS.	PART NO.	NAME OF PART	AMT.
PL-52047			
1	00-288174	Bumper – Button	4
2	00-288059	Baffle – Vent	4
3	00-119082	Insert – Tank Corner (Left Rear)	1
4	NS-015-11	Nut $\frac{5}{16}$ -18 Hex	11
5	WL-006-22	Lockwasher $\frac{5}{16}$ Light	11
6	00-119083	Insert – Tank Corner (Right Rear)	1
7	00-119047	Spacer – Tank & Chamber	6
8	SC-041-13	Cap Screw $\frac{5}{16}$ -18 x 1 Hex Hd. (SST)	6
9	00-119081	Insert – Tank Corner (Front)	2
10	00-119244	Cap & Stud Assy.	3
11	00-067500-00031	O-Ring	3
12	00-119254	Retainer – Cap & Stud	3
13	WL-006-17	Lockwasher $\frac{1}{4}$ Medium	3
14	NS-015-01	Nut $\frac{1}{4}$ -20 Hex (SST)	3
15	00-288946-00002	Foot – Adjustable ($1\frac{5}{8}$) (SST)	4
16	00-329208	Panel – Front	1
17	00-112605-027-2	Plug – Foot	4
18	00-329688	Foot – Flanged	4
19	SW-008-17	Lag Screw $\frac{3}{8}$ -7 x 2 Sq. Hd.	4



DISH RACKS

ILLUS.	PART NO.	NAME OF PART	AMT.
1	00-315191	Rack – Peg (Packaged).....	1
2	00-315193	Rack – Combination (Packaged).....	1
	00-295288	Peg Type Tray Rack (Packaged).....	1
	00-892671	Rack – Bun Pan.....	1