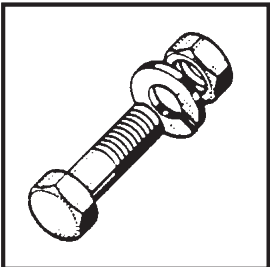


HSM 20 & NCM 20

Catalogue of Replacement Parts
Catalogue de Pieces de Rechange
Ersatzteilkatalog

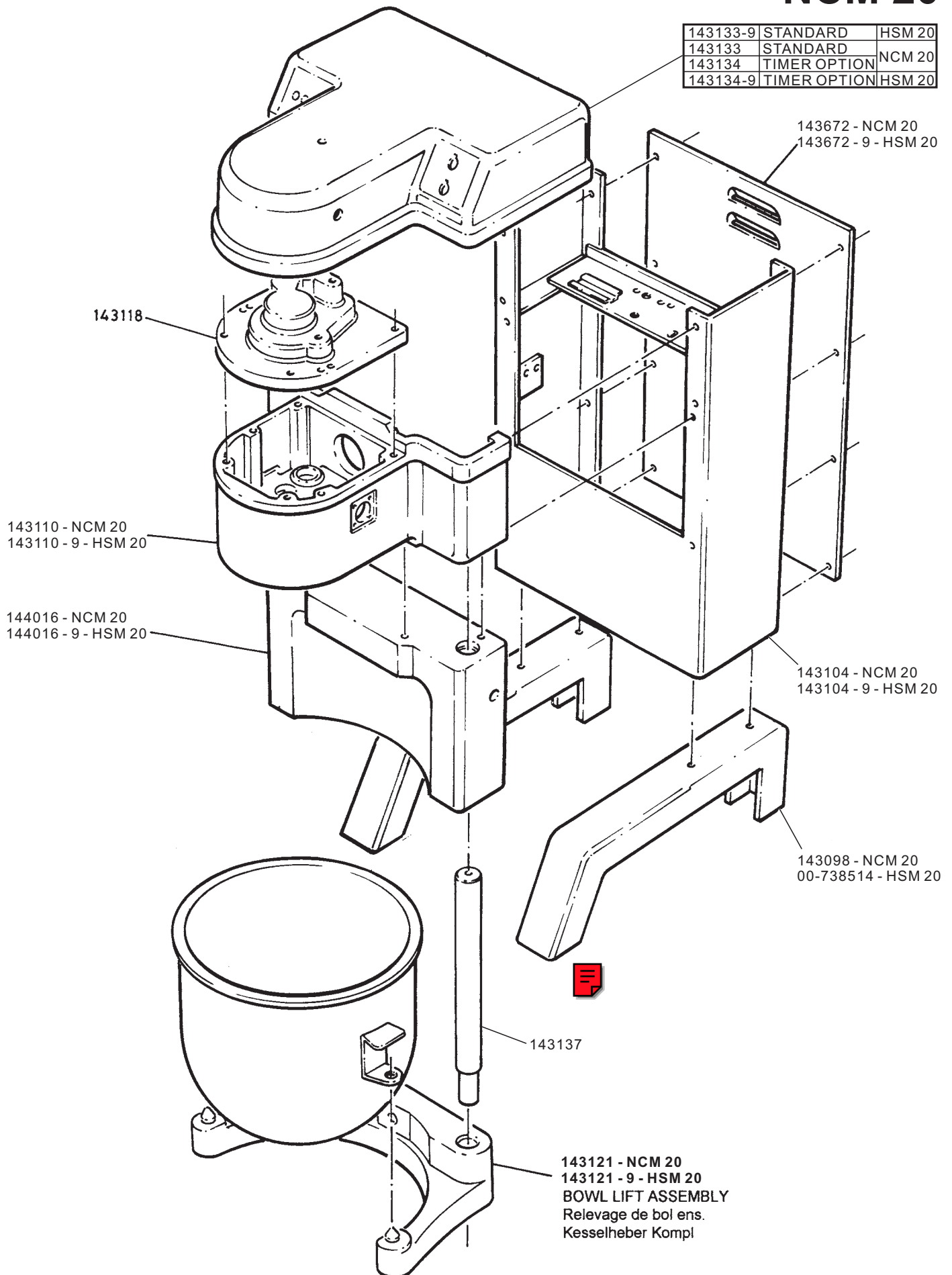


Page Seite	
2	Base and Pedestal Unit Base et Colonne Gehäuse mitt standfüßen
3	Bowl Lift Revelage de bol Kesselheber
4	Shifter Unit Changement de vitesses Geschwindig Keitswahlschalter
5	Centre Shaft Arbre Central Getriebewelle
6	Transmission Shaft Arbre Intermédiaire Antrießswelle
7	Worm Gear Shaft Arbre roue hélicoidal Schneckenradwelle
8	Planetary Planétaire Planetengesriebe
9/10/11/12	Guard Assembly Sécurité de bol Schtuzgitter
13/14	Guard Interlock Assembly Verrouillage de sécurité de bol Sicherheitsschalter
14	Electrics Électriques Elektrik
15	Bowl and Equipment Bol et Équipement Kessel und Austrüstung

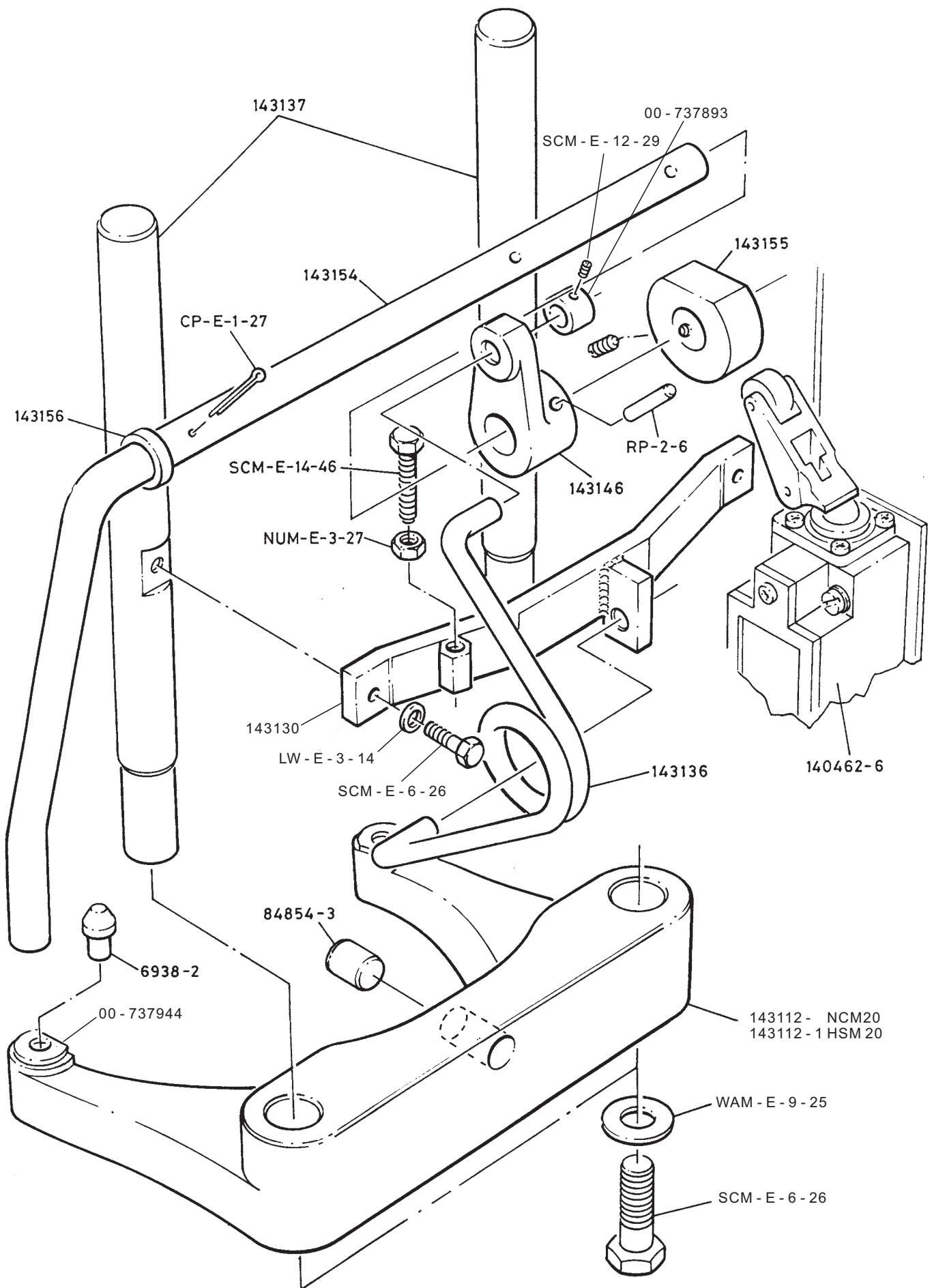
Base and Pedestal Unit
Base et Colonne
Gehäuse mitt standfüßen

HSM 20
NCM 20

143133-9	STANDARD	HSM 20
143133	STANDARD	NCM 20
143134	TIMER OPTION	NCM 20
143134-9	TIMER OPTION	HSM 20

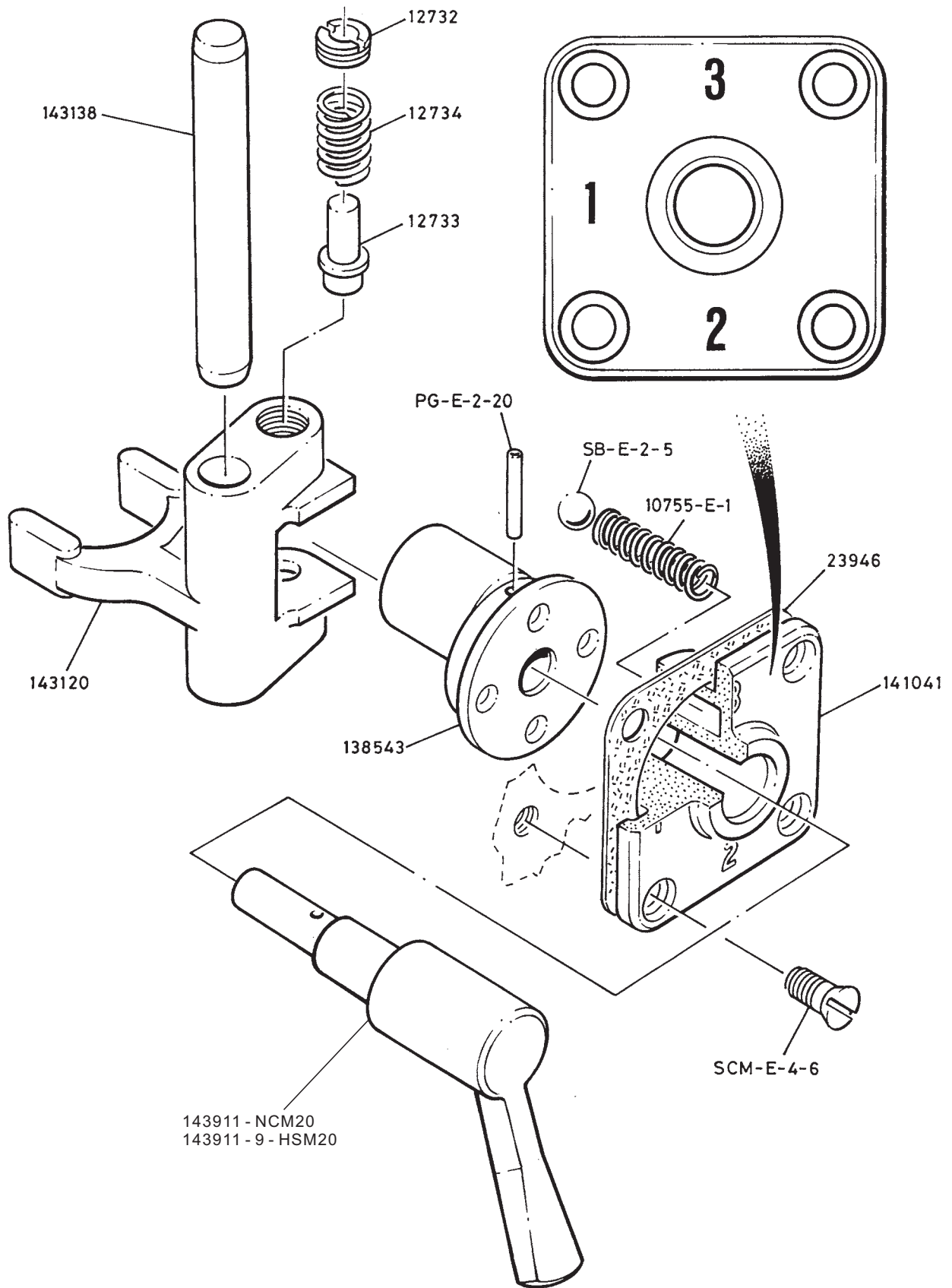


Bowl Lift Revelage de bol Kesselheber

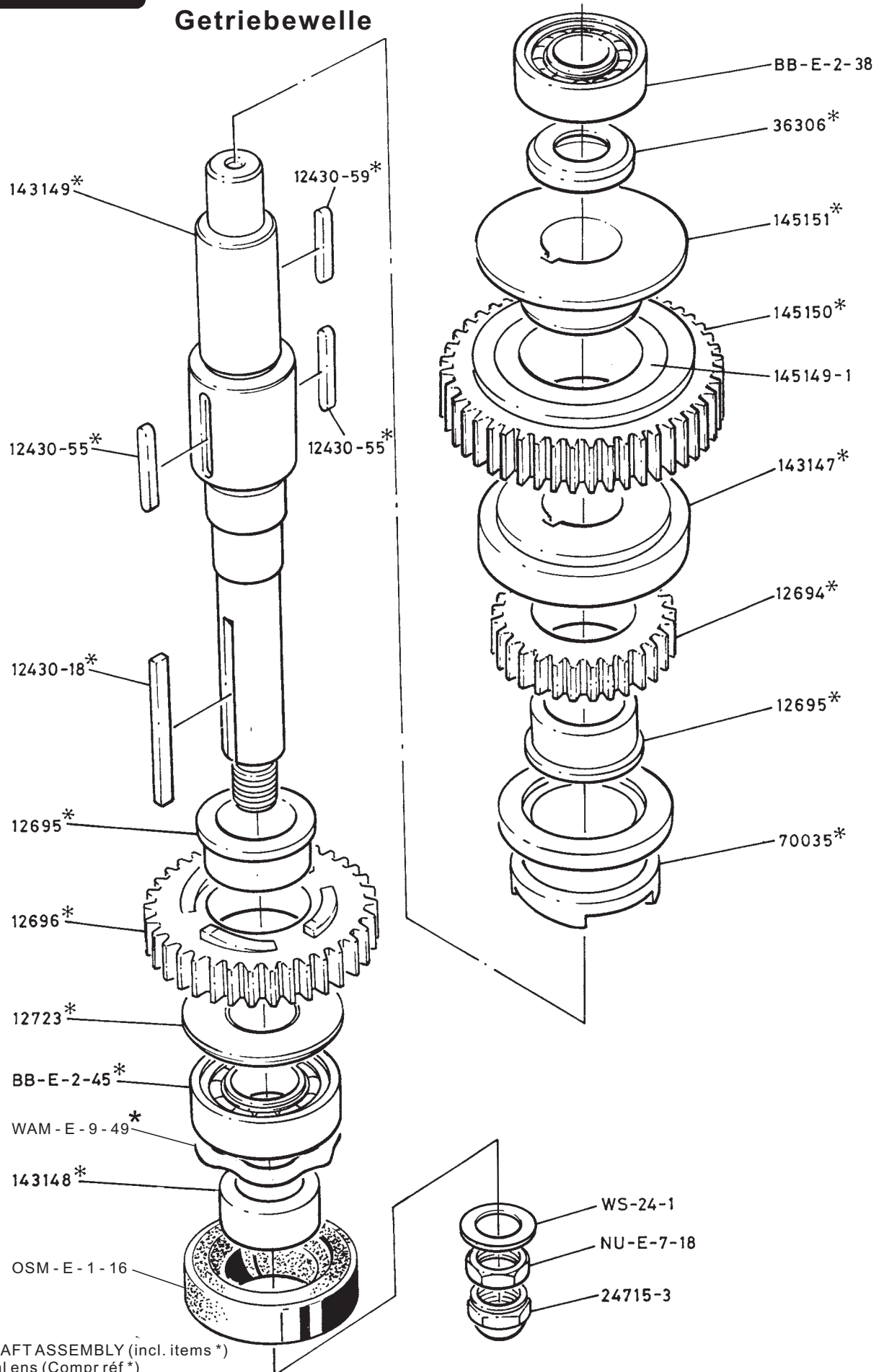


Shifter Unit
Changement de vitesses
Geschwindigkeit Keitswahlschalter

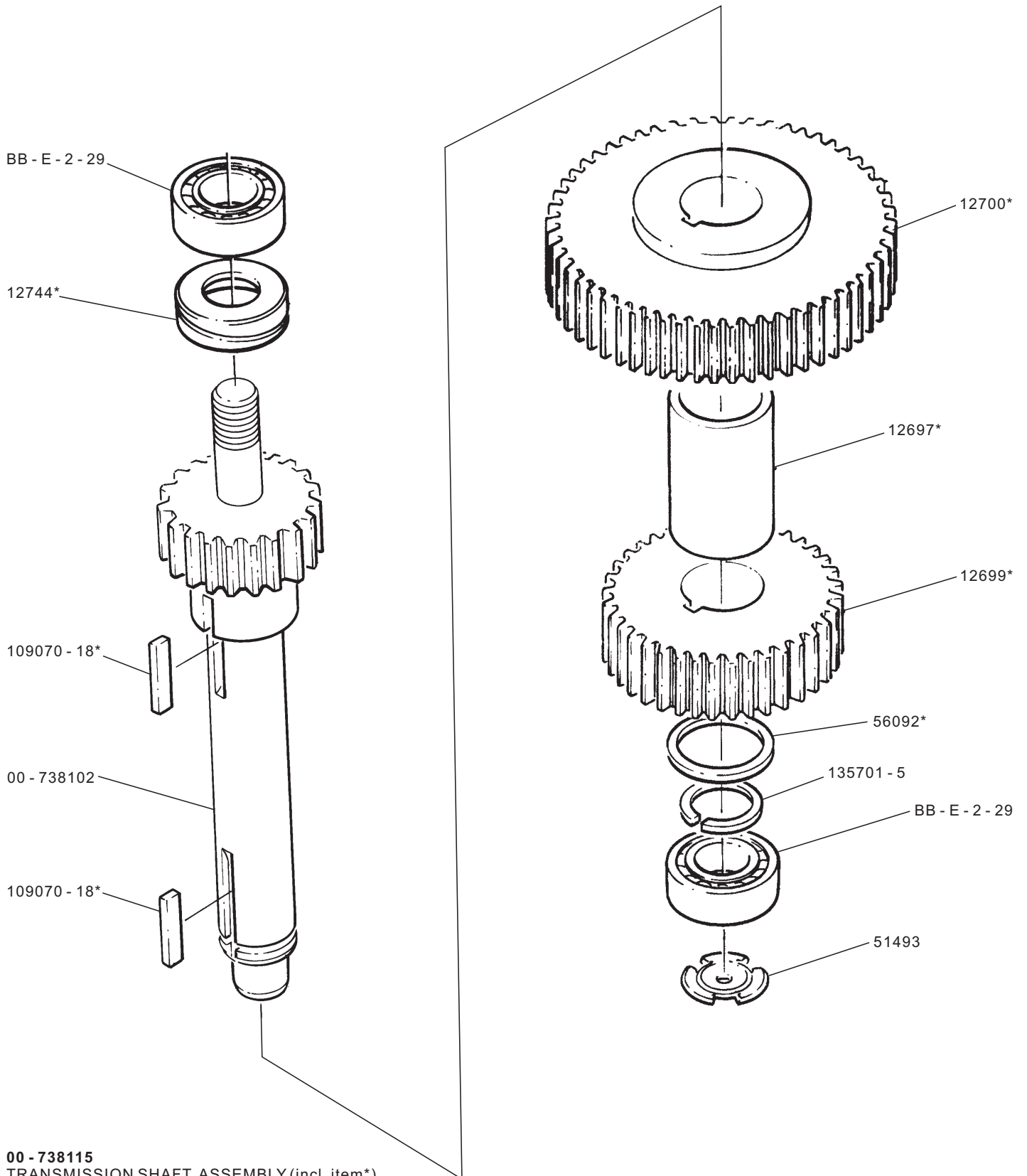
HSM 20
NCM 20



Centre Shaft Arbre Central Getriebewelle



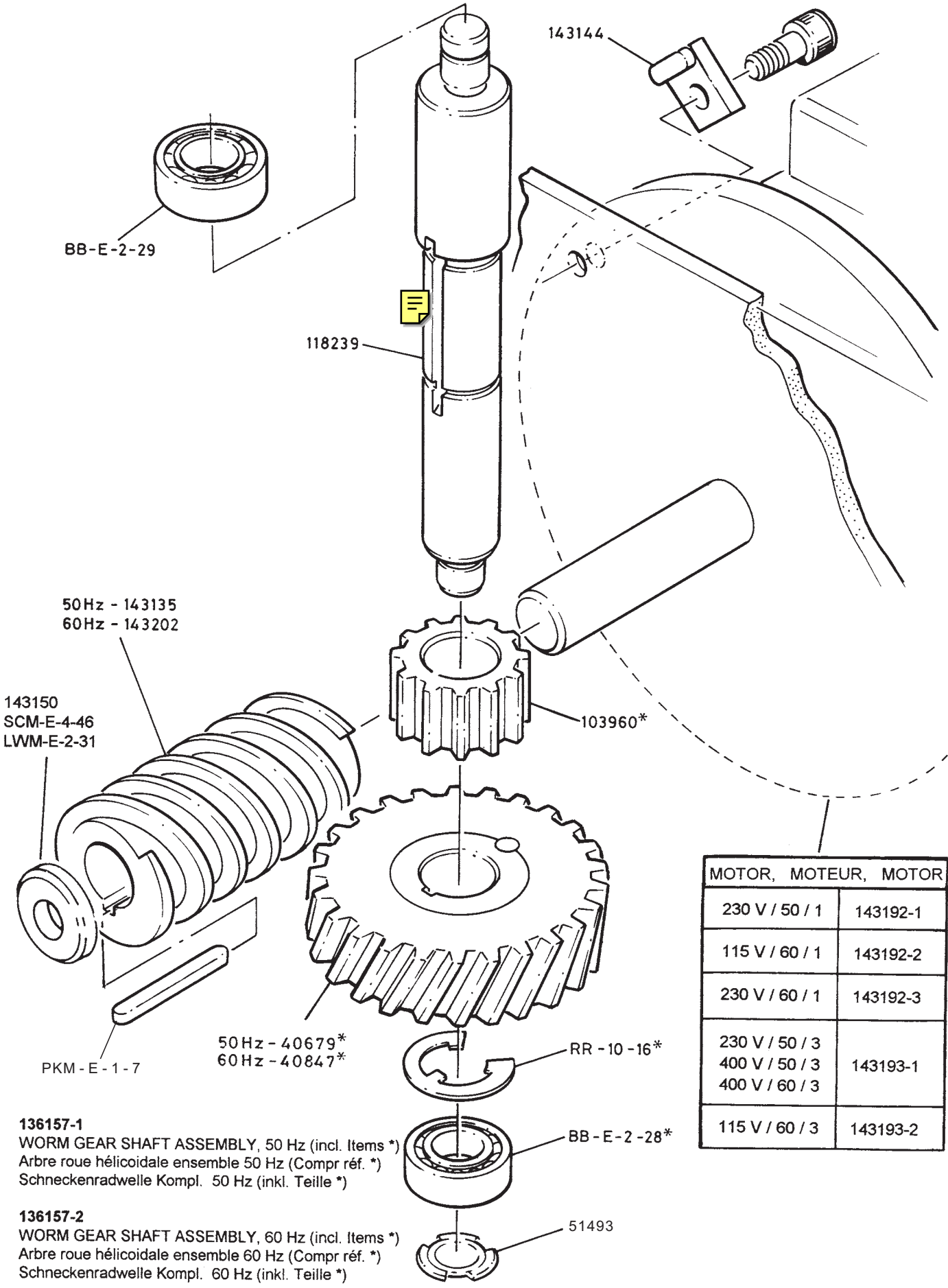
143153
CENTRE SHAFT ASSEMBLY (incl. items *)
Arbre Central ens (Compr réf *)
Getriebewelle Kompl (inkl. Teile *)



00 - 738115
 TRANSMISSION SHAFT, ASSEMBLY (incl. item*)
 arbre intermediaire, ensemble (compr. ref.*)
 Antriebswelle, komplett (inkl. Teile*)



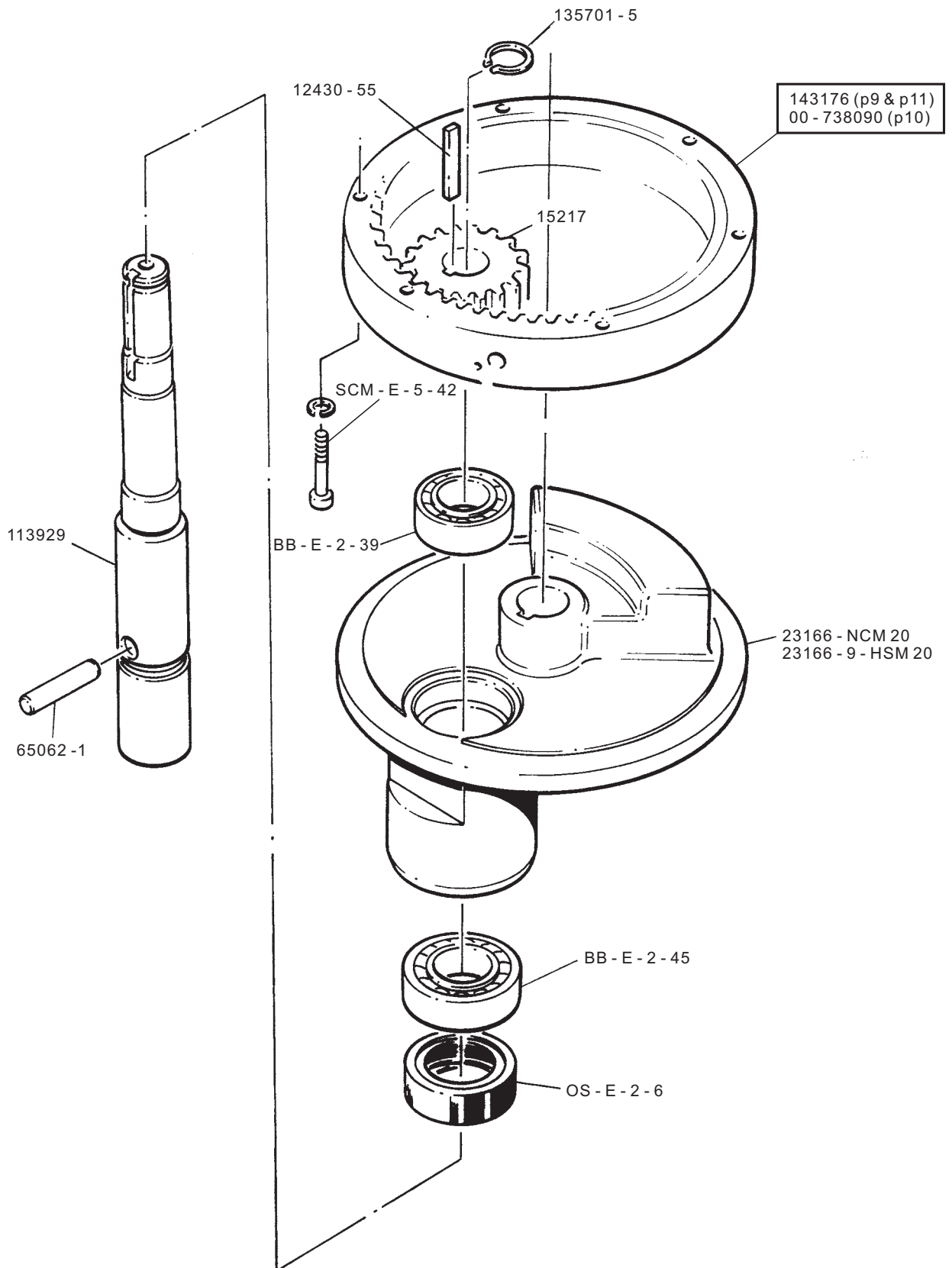
Worm Gear Shaft
Arbre roue hélicoidal
Schneckenradwelle

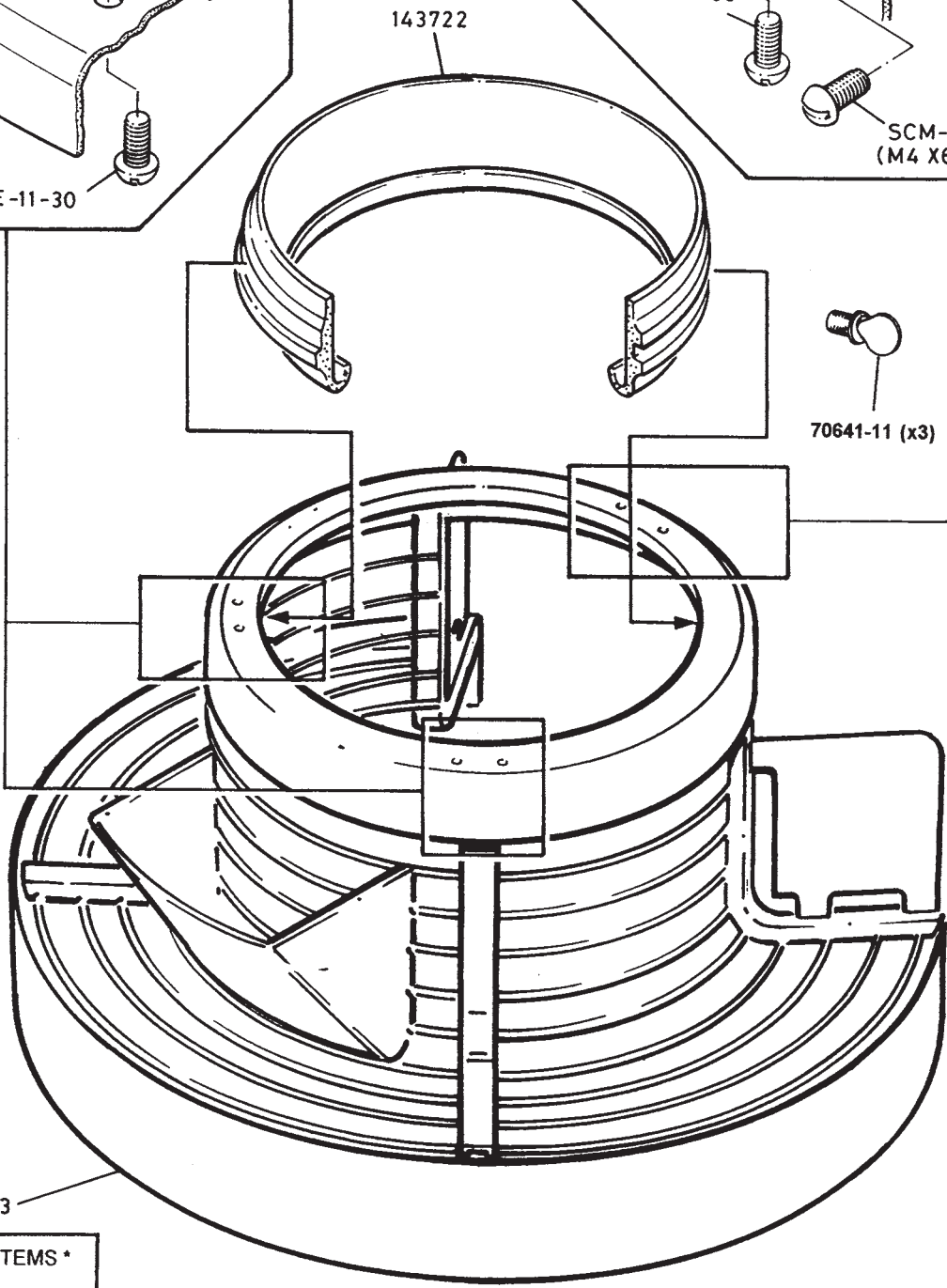
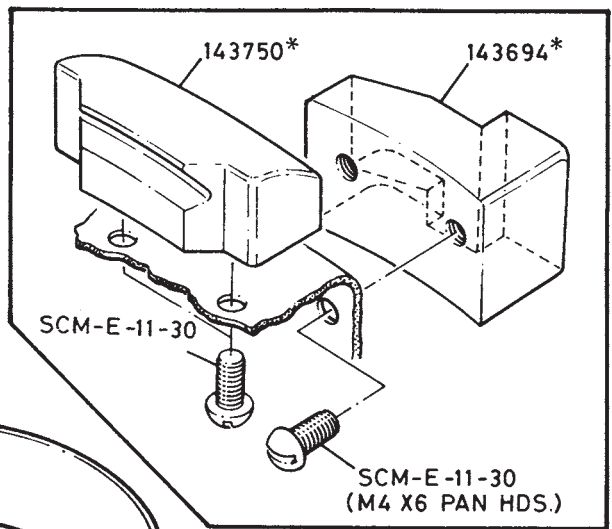
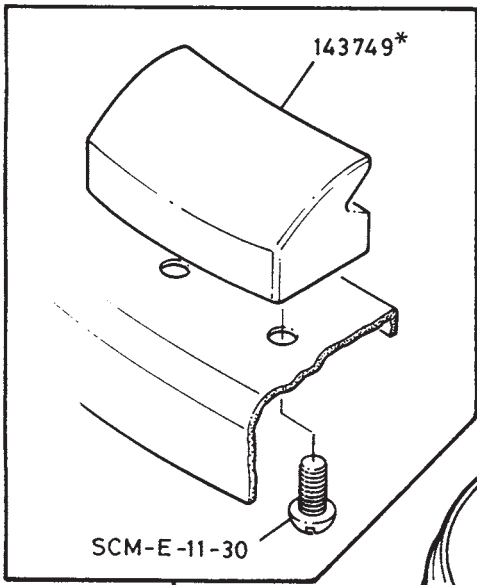


MOTOR, MOTEUR, MOTOR	
230 V / 50 / 1	143192-1
115 V / 60 / 1	143192-2
230 V / 60 / 1	143192-3
230 V / 50 / 3 400 V / 50 / 3 400 V / 60 / 3	143193-1
115 V / 60 / 3	143193-2

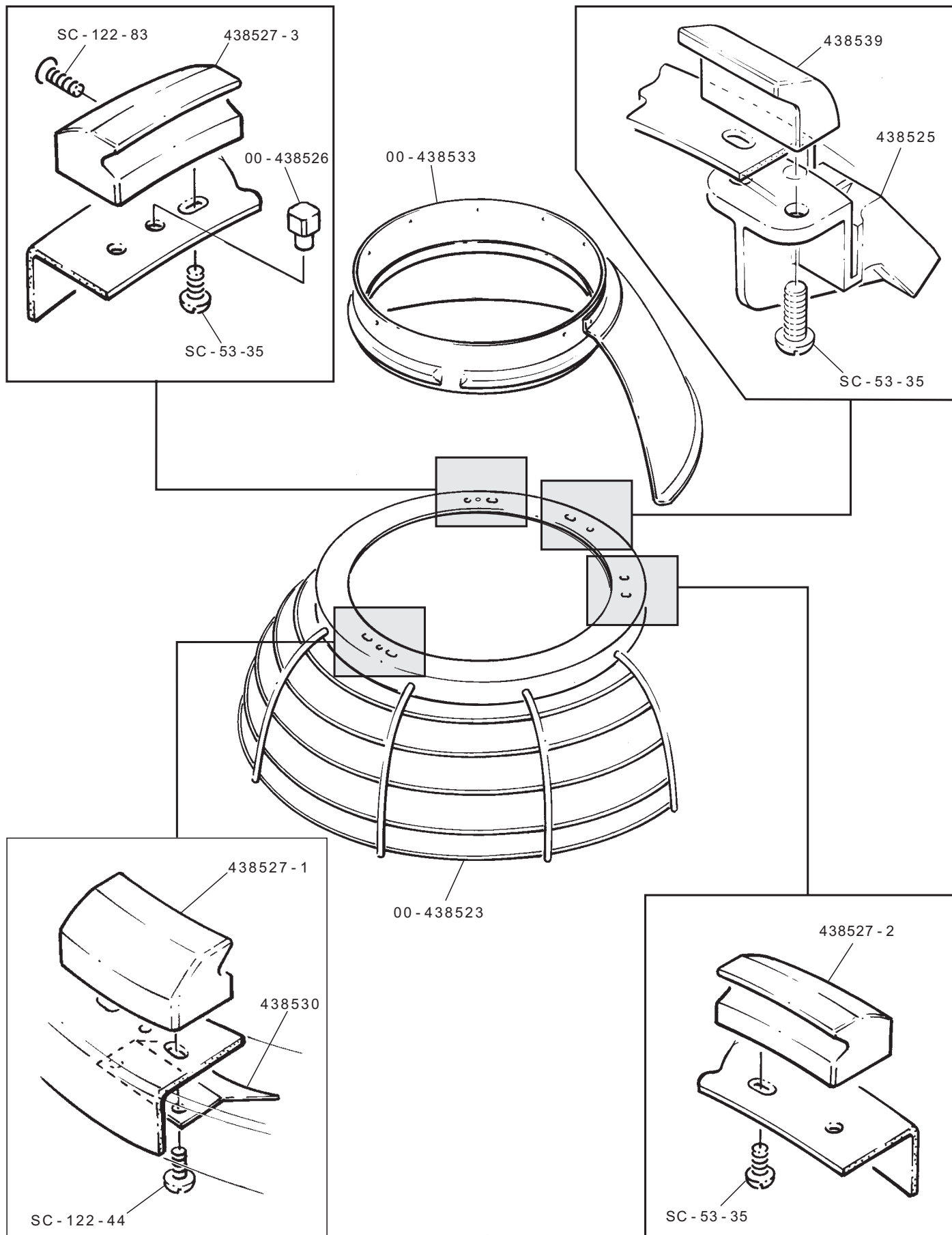
136157-1
 WORM GEAR SHAFT ASSEMBLY, 50 Hz (incl. Items *)
 Arbre roue hélicoidal ensemble 50 Hz (Compr réf. *)
 Schneckenradwelle Kompl. 50 Hz (inkl. Teille *)

136157-2
 WORM GEAR SHAFT ASSEMBLY, 60 Hz (incl. Items *)
 Arbre roue hélicoidal ensemble 60 Hz (Compr réf. *)
 Schneckenradwelle Kompl. 60 Hz (inkl. Teille *)



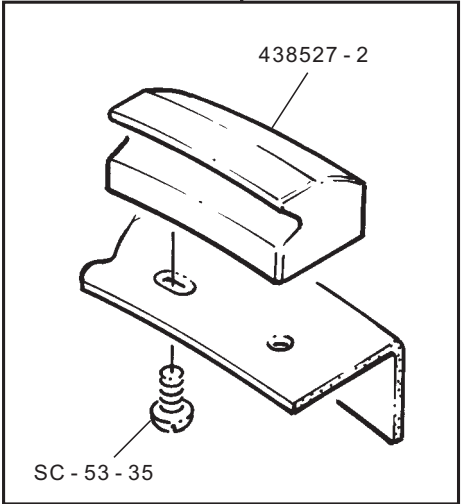
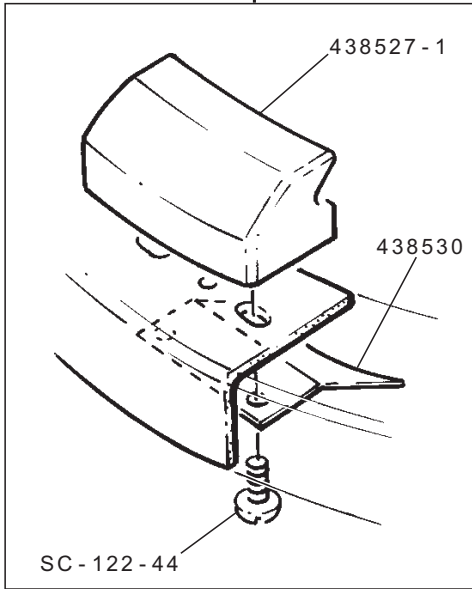
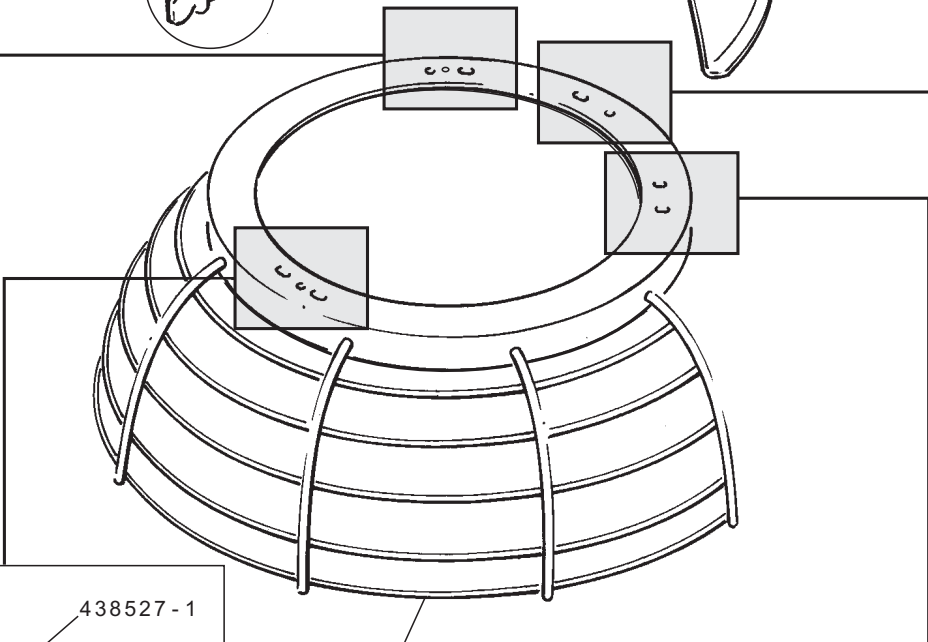
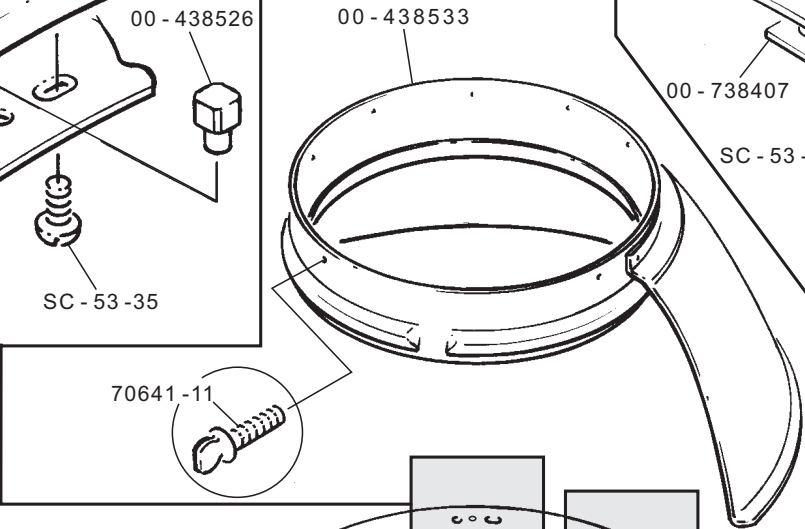
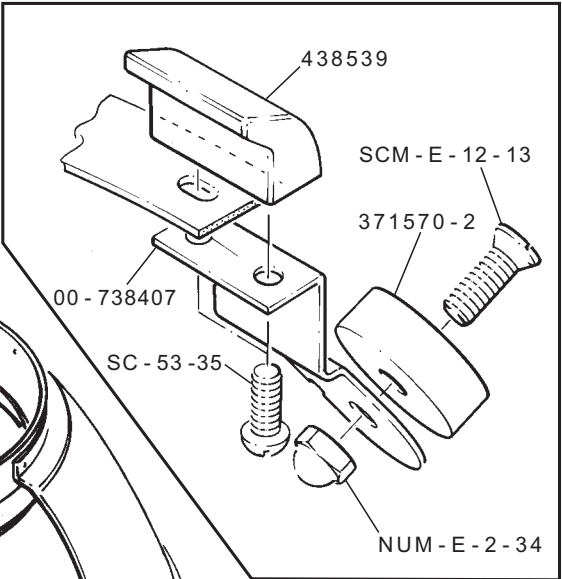
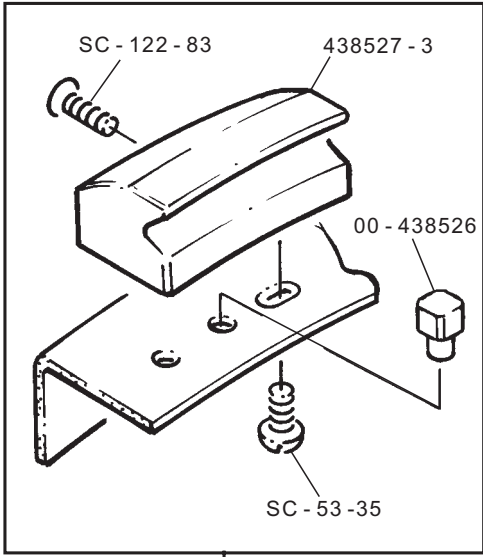


INCL. ITEMS *
COM. Léf *
Inkl. Teille *

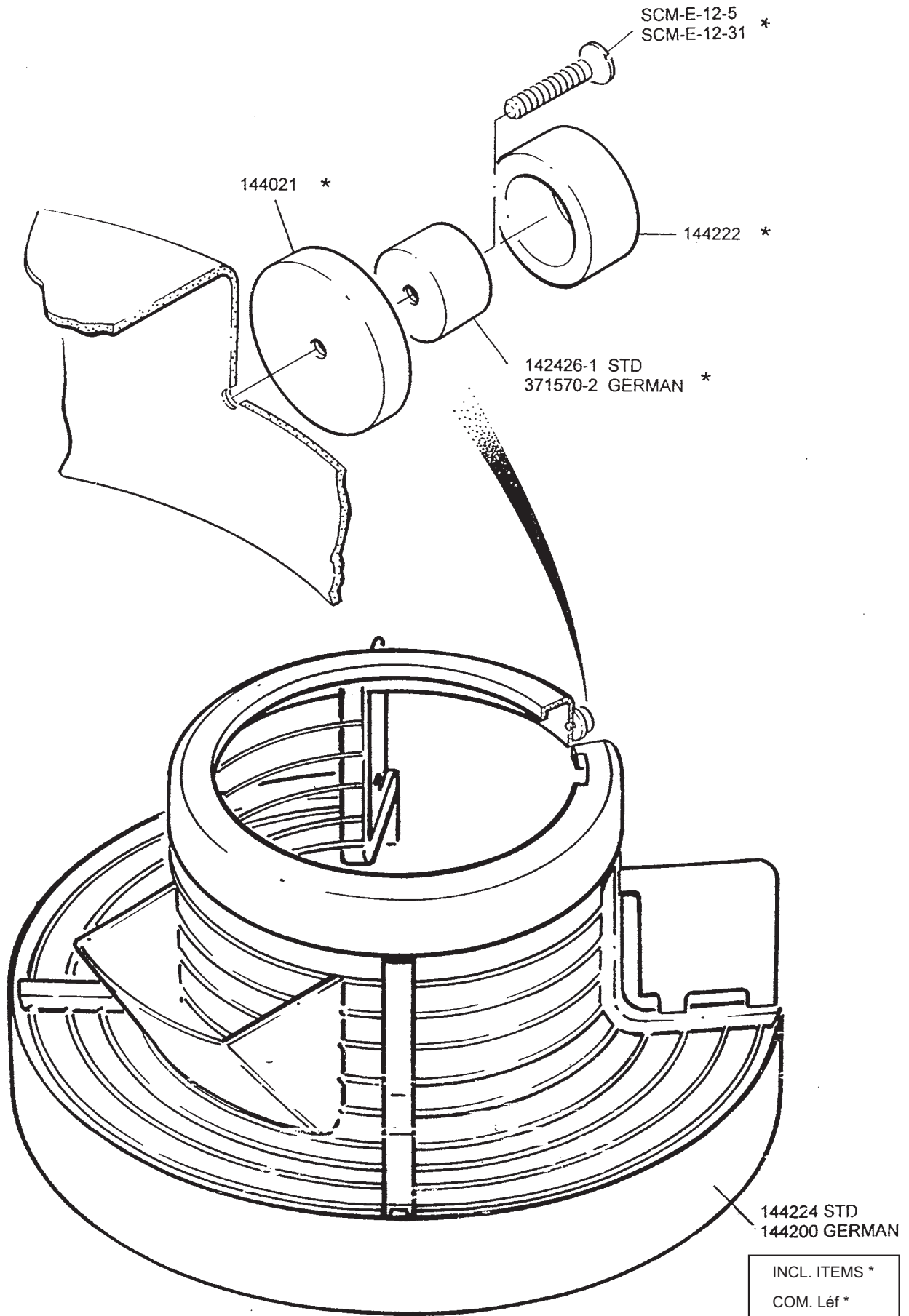




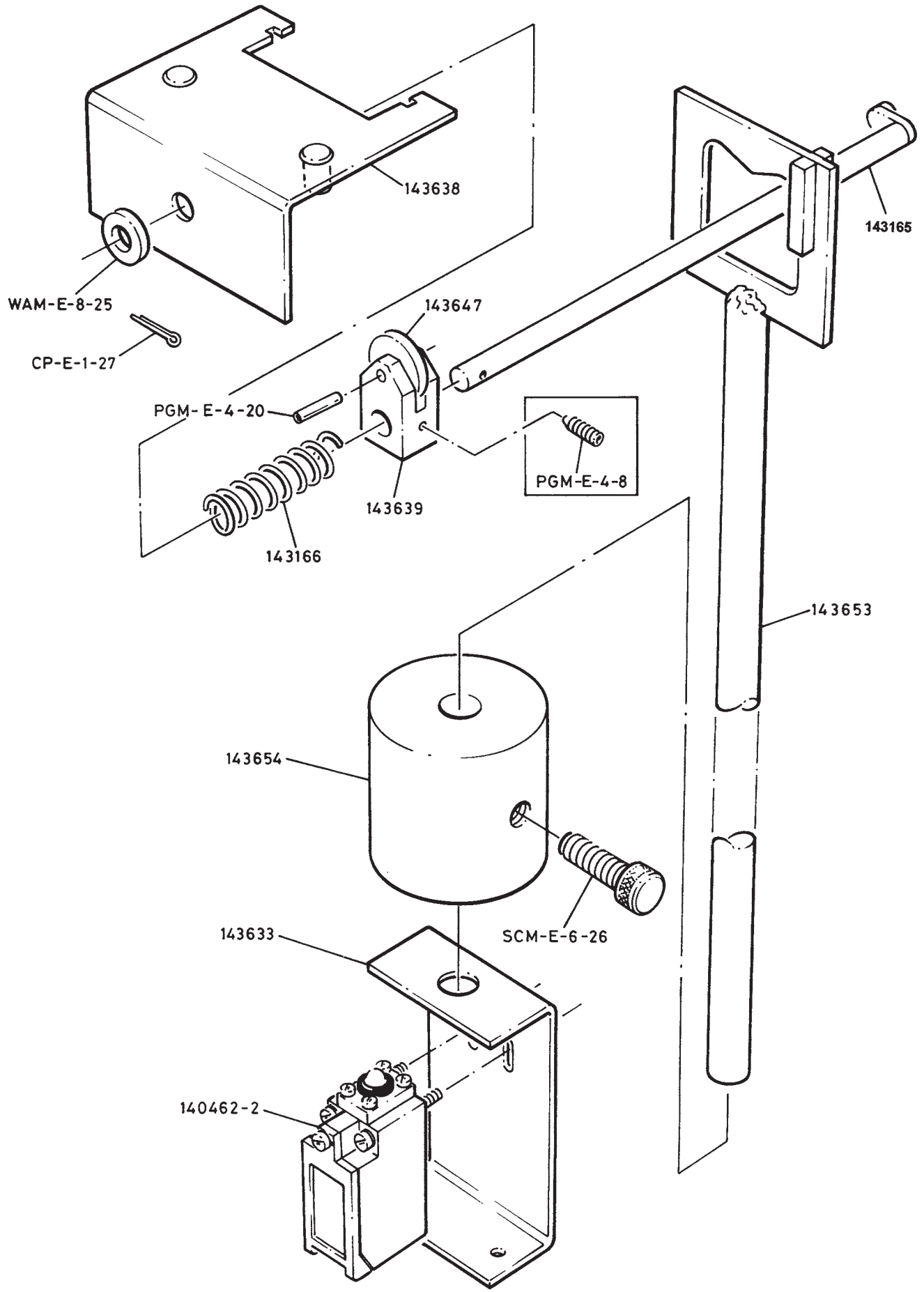
Guard Assembly (GERMAN)
Sécurité de bol
Schutzgitter

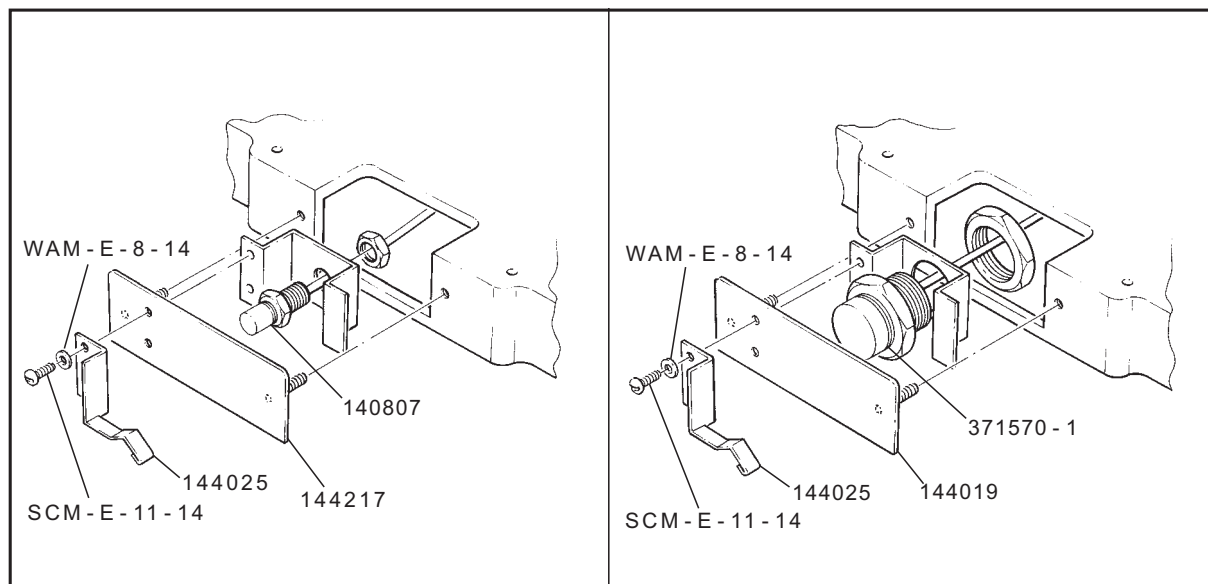
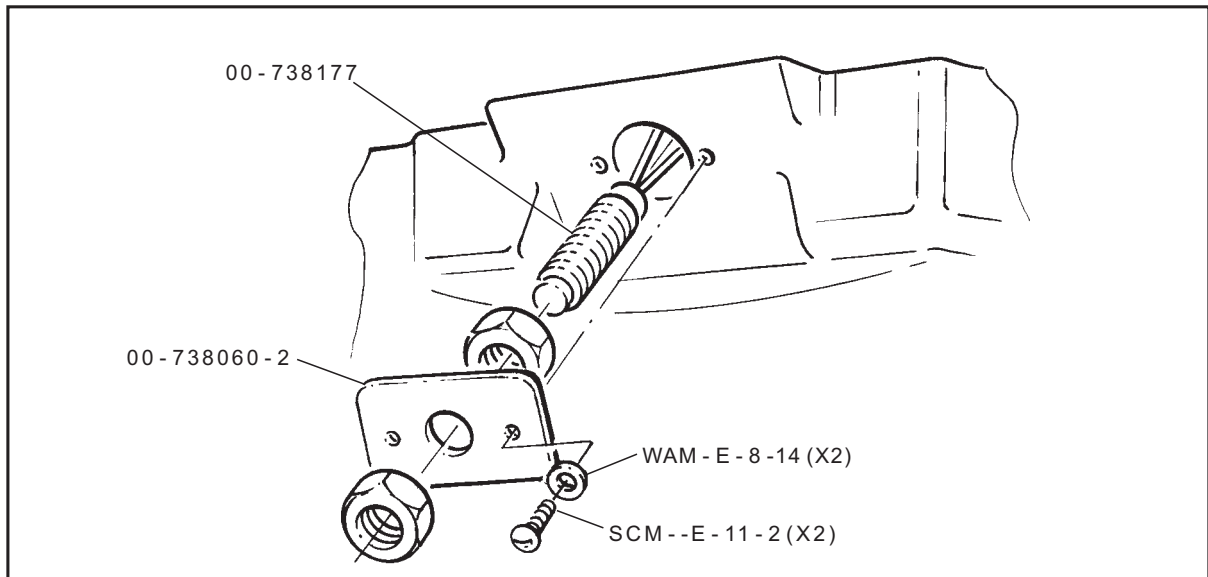
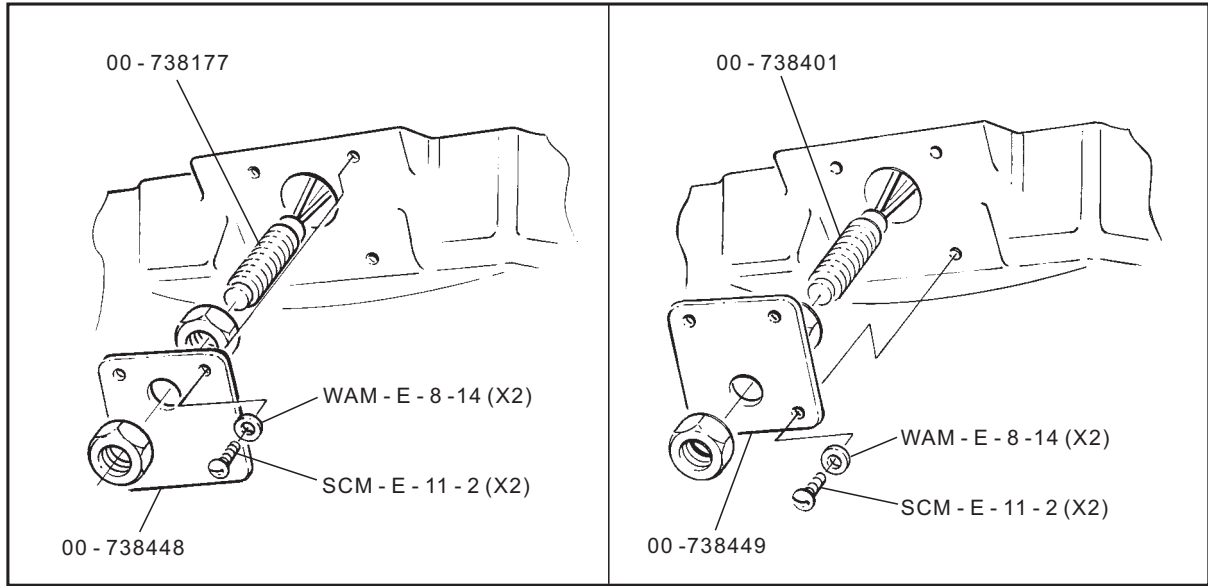


Guard Assembly = 00 - 738451
 Sécurité de bol
 Schutzgitter



Guard Interlock Assembly
Verrouillage de sécurité de bol
Sicherheitsschalter

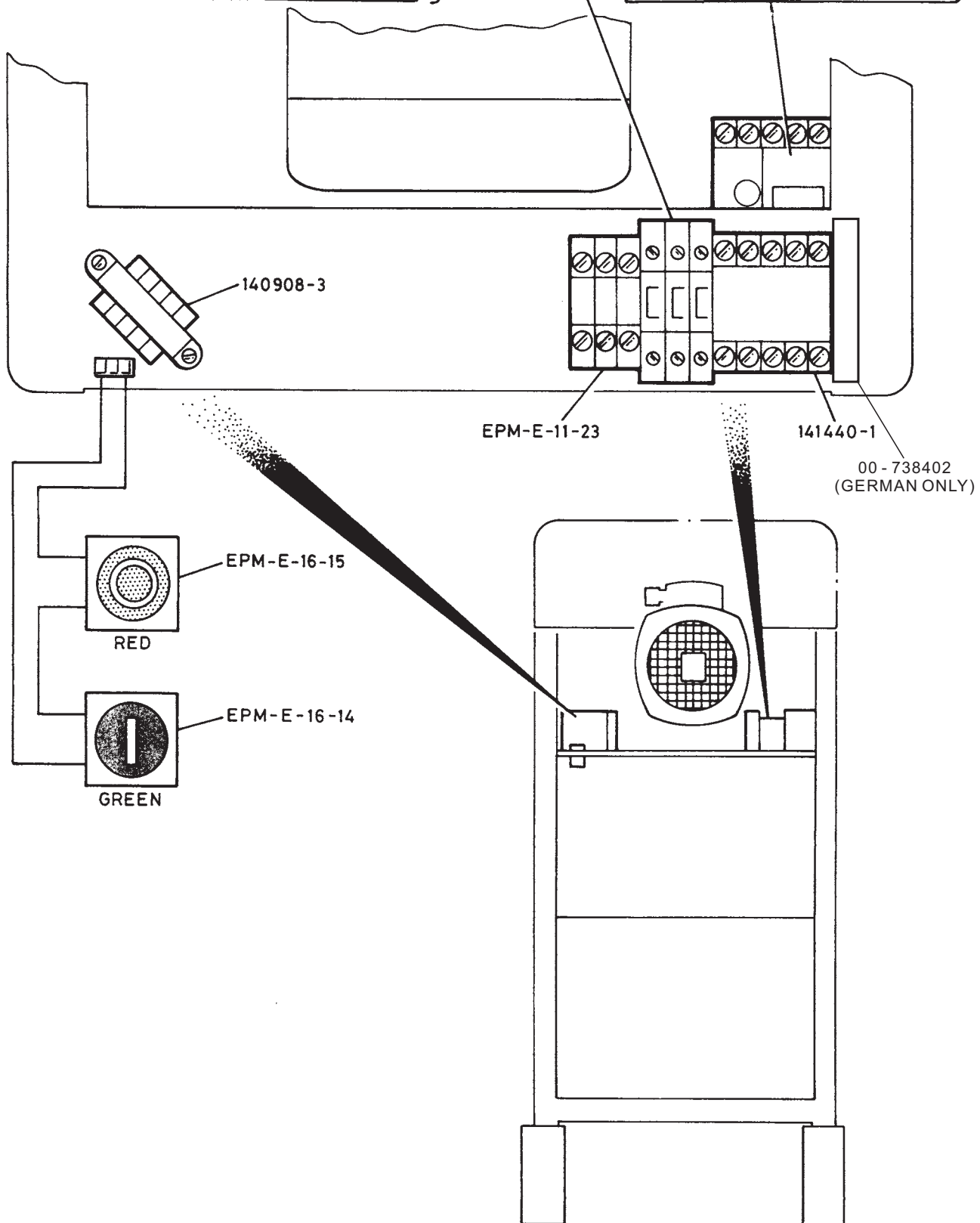


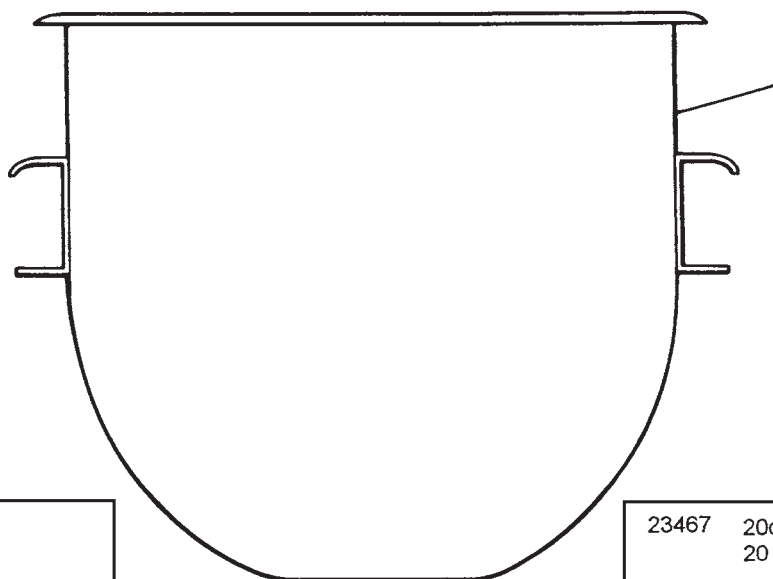


230 V / 50 / 1	C/D	X1
230 V / 50 / 3	F/G	X2
400 V / 50 / 3	H/J	X3
400 V / 50 / 3 + N	K/L	X1
440 V / 60 / 3	QQ	X3

EP-E-10-1
EP-E-10-10

142403-8	C/D	230 V / 50 / 1
142403-7	F/G	230 V / 50 / 3
142403-7	H/J	400 V / 50 / 3
142403-7	K/L	400 V / 50 / 3 + N
142403-7	QQ	440 V / 60 / 3



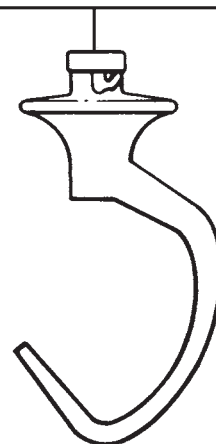
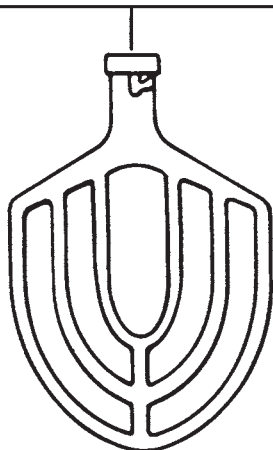


62104 20qt
 135377 10qt

23126	20qt A20B 20 l A20B
24822	20qt A20B (s.stl./inox/CrNi) 20 l A20B (s.stl./inox/CrNi)
36915	10qt A10B 10 l A10B

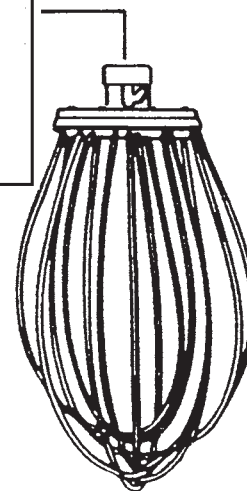
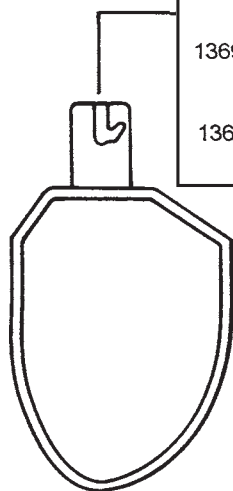
23467	20qt A20E 20 l A20E
53692	20qt A20E (s.stl./inox/CrNi) 20 l A20E (s.stl./inox/CrNi)
36912	10qt A10E 10 l A10E

40293



74286	20qt A20PK 20 l A20PK
59642	20qt A20PK(s.stl./inox/CrNi) 20 l A20PK (s.stl./inox/CrNi)
136914-1	10qt A10PK 10 l A10PK
136914-2	10qt A10PK(s.stl./inox/CrNi) 10 l A10PK(s.stl./inox/CrNi)

146010	20qt A20DG 20 l A20DG
32343	10qt A10D 10 l A10D
34962	10qt A10DG 10 l A10DG
23511-2-M	20qt A20D 20 l A20D





As continued product improvement is a policy of HOBART, specifications are subject to change without notice.

Ce catalogue n'est pas contractuel. HOBART se réserve le droit, et sans préavis, d'apporter toutes modifications ou améliorations à ses matériels.

HOBART behält sich das Recht vor, an allen Produkten technische Änderungen und Verbesserungen ohne Ankündigung vorzunehmen.

Voortdurende produktverbetering vormt een wezenlijk onderdeel van het beleid van HOBART. Specificaties kunnen zonder kennisgeving gewijzigd worden.