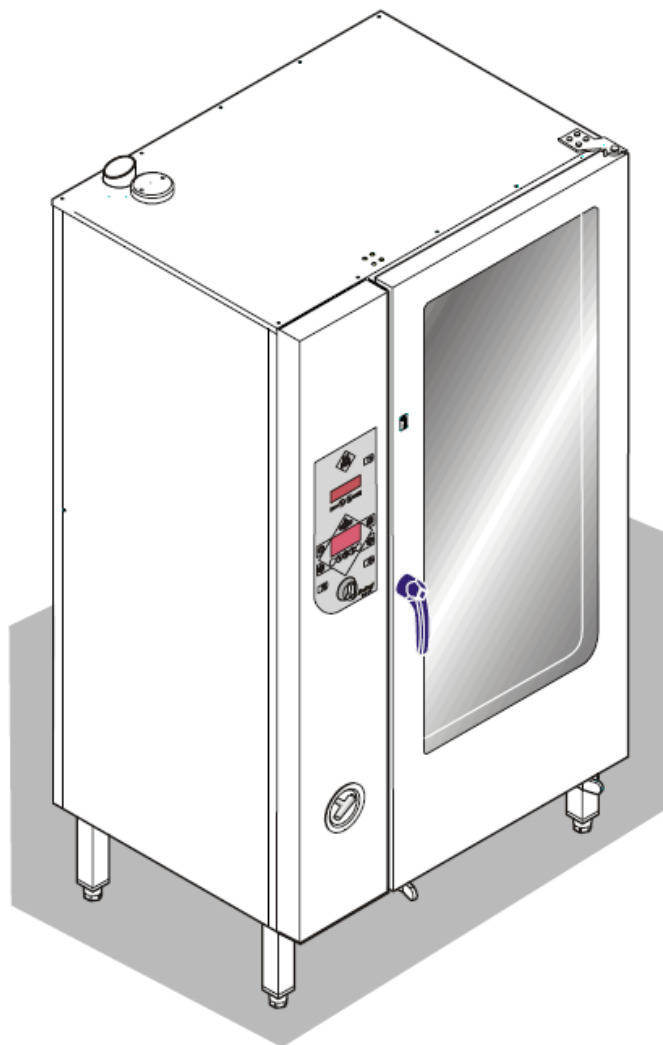


en

Exploded drawings

Electric and Gas Combisteamer Gold

European CE-Version



Model	Serial-No. / date	
	from	thru
Software:	Version 4.00	
HansDampf 6.x, right hinged	12212149 / Oct. 2012	-
HansDampf 6.x, left hinged	12212288 / Nov. 2012	-
HansDampf 10.x right hinged	12211027 / Oct. 2012	-
HansDampf 10.x left hinged	12213195 / Nov. 2012	-
HansDampf 20.x right hinged	12200172 / Jan. 2007	-
HansDampf 20.x left hinged	12200172 / Jan. 2007	-

2013/01/07 SEV/KA

New cabinet door and door gasket for 6.x & 10.x

From October 2012 the cabinet door incl. door lock and gasket has been changed stepwise.

Furthermore, the door gasket has been changed. The new one has the same dimensions, but because of the style the gasket is not downward compatible.

Also door lock and collecting tray do not fit into old door types!

Unit type	Previous door seal no.	New door seal no.
6.x	#211094	#10012489
10.x	#211095	#10012490

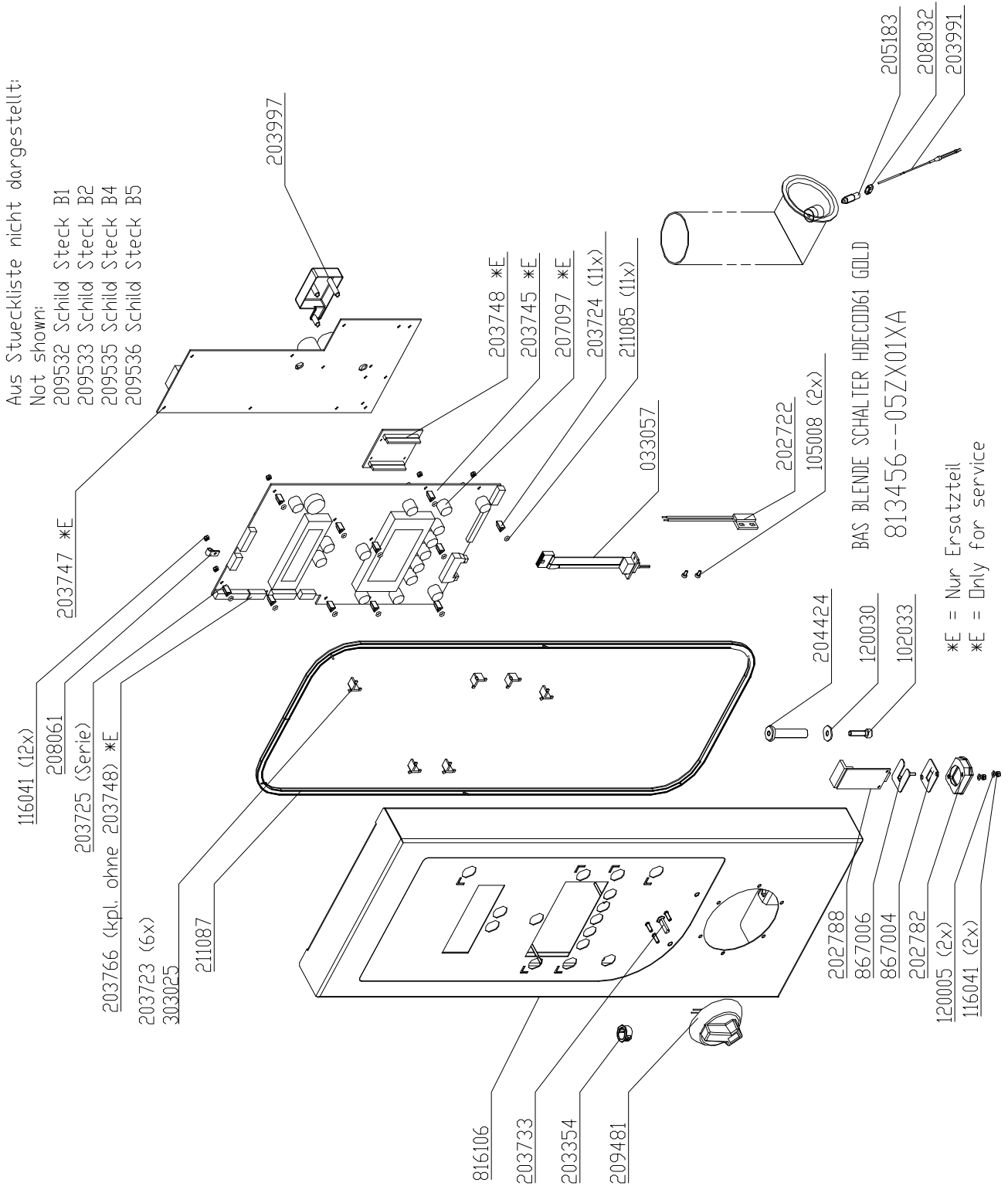
Contents

New cabinet door and door gasket for 6.x & 10.x.....	2
Front panel HD6.x Gold.....	5
Front panel HD10.x Gold.....	6
Electric assembly 3NPE 400V HD6.1.....	7
Electric assembly 3NPE 400V HD6.2.....	8
Electric assembly 3NPE 400V HD10.1.....	9
Electric assembly 3NPE 400V HD10.2.....	10
Gas assembly HD6.1.....	11
Gas assembly HD6.2.....	12
Gas assembly HD10.1.....	13
Gas assembly HD10.2.....	14
Core temperature probe HD6.x & HD10.x.....	15
Tube carrier box & handshower HD6.x & HD10.x Electric.....	16
Tube carrier box & handshower 6.x & 10.x Gas.....	17
Water assembly 50Hz HD6.x & HD10.x.....	18
Chassis HD6.x Electric.....	19
Chassis HD10.x Electric.....	20
Chassis HD6.x Gas.....	21
Chassis HD10.x Gas.....	22
Chassis door area HD6.x, right hinged (Electric).....	23
Chassis door area HD6.x, left hinged (Electric).....	24
Chassis door area HD10.x, right hinged (Electric).....	25
Chassis door area HD10.x, left hinged (Electric).....	26
Chassis door area HD6.x, right hinged (Gas).....	27
Chassis door area HD6.x, left hinged (Gas).....	28
Chassis door area HD10.x, right hinged (Gas).....	29
Chassis door area HD10.x, left hinged (Gas).....	30
Front panel HD20.x Gold.....	32
Electric assembly 3NPEAC 400V HD20.1.....	33
Electric assembly 3NPEAC 400V HD20.2.....	34
Gas assembly HD20.1.....	35
Gas assembly HD20.2.....	36
Core temperature probe HD20.x.....	37
Tube carrier box & handshower HD20.x (Electric).....	38
Tube carrier box & handshower HD20.x Gas.....	39
Water assembly 50Hz HD20.x.....	40
Chassis HD20.x (Electric).....	41
Chassis HD20.x (Gas).....	42
Chassis door area HD20.x, right hinged (Electric).....	43
Chassis door area HD20.x, left hand hinged (Electric).....	44
Chassis door area HD20.x, right hinged (Gas).....	45
Chassis door area HD20.x, left hand hinged.....	46

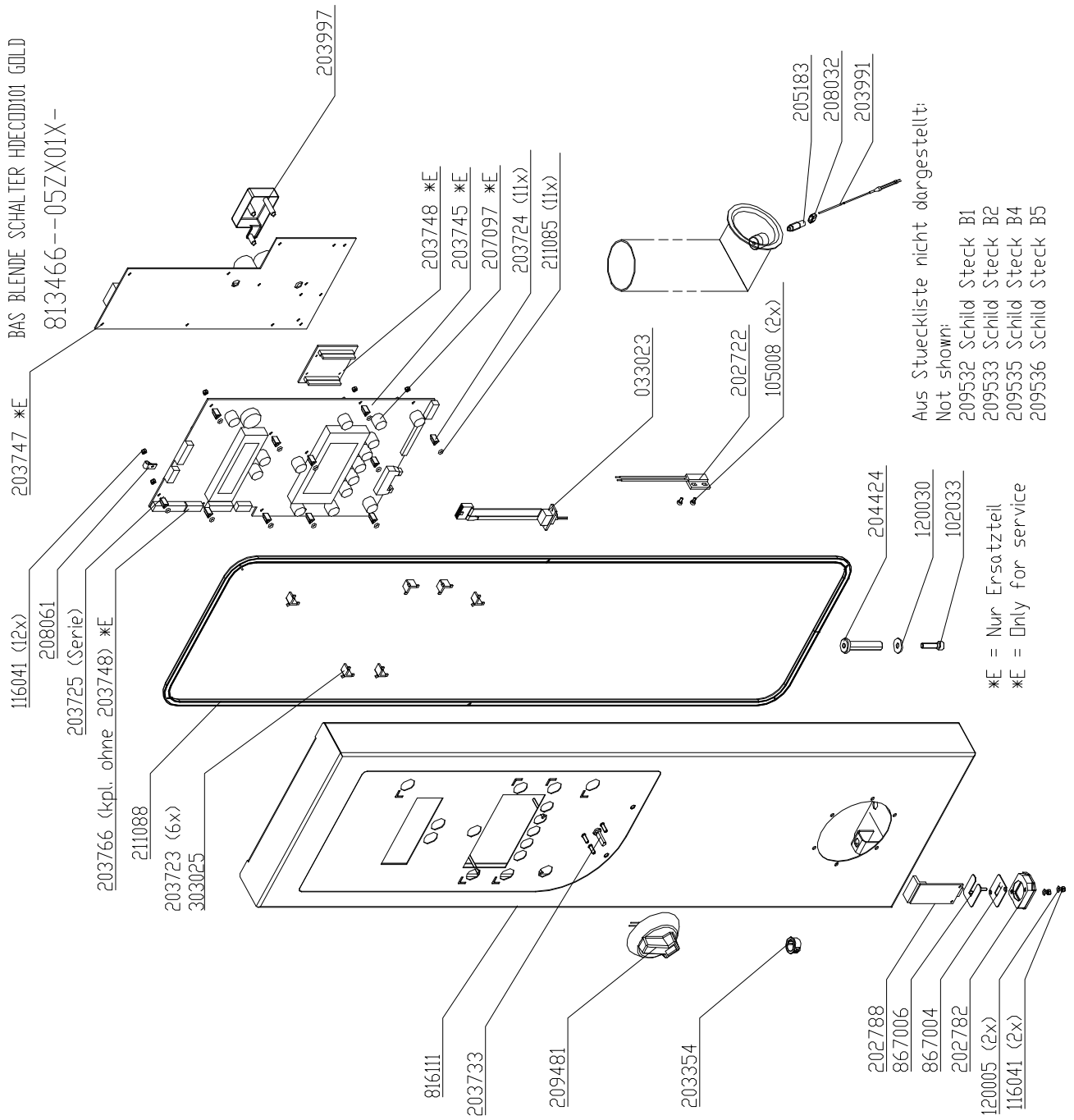
Exploded drawings 6.x & 10.x

Electric & Gas

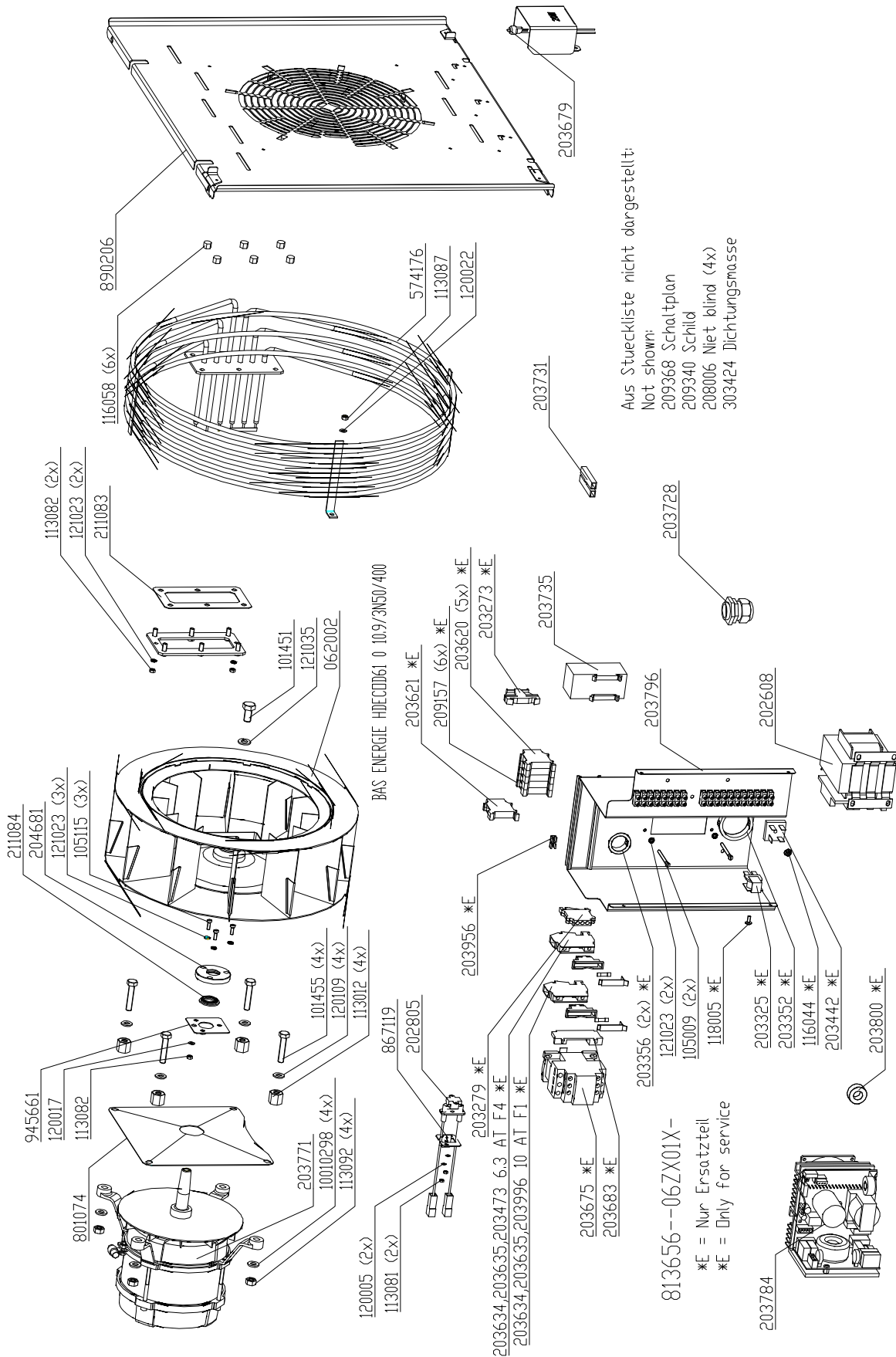
Front panel HD6.x Gold



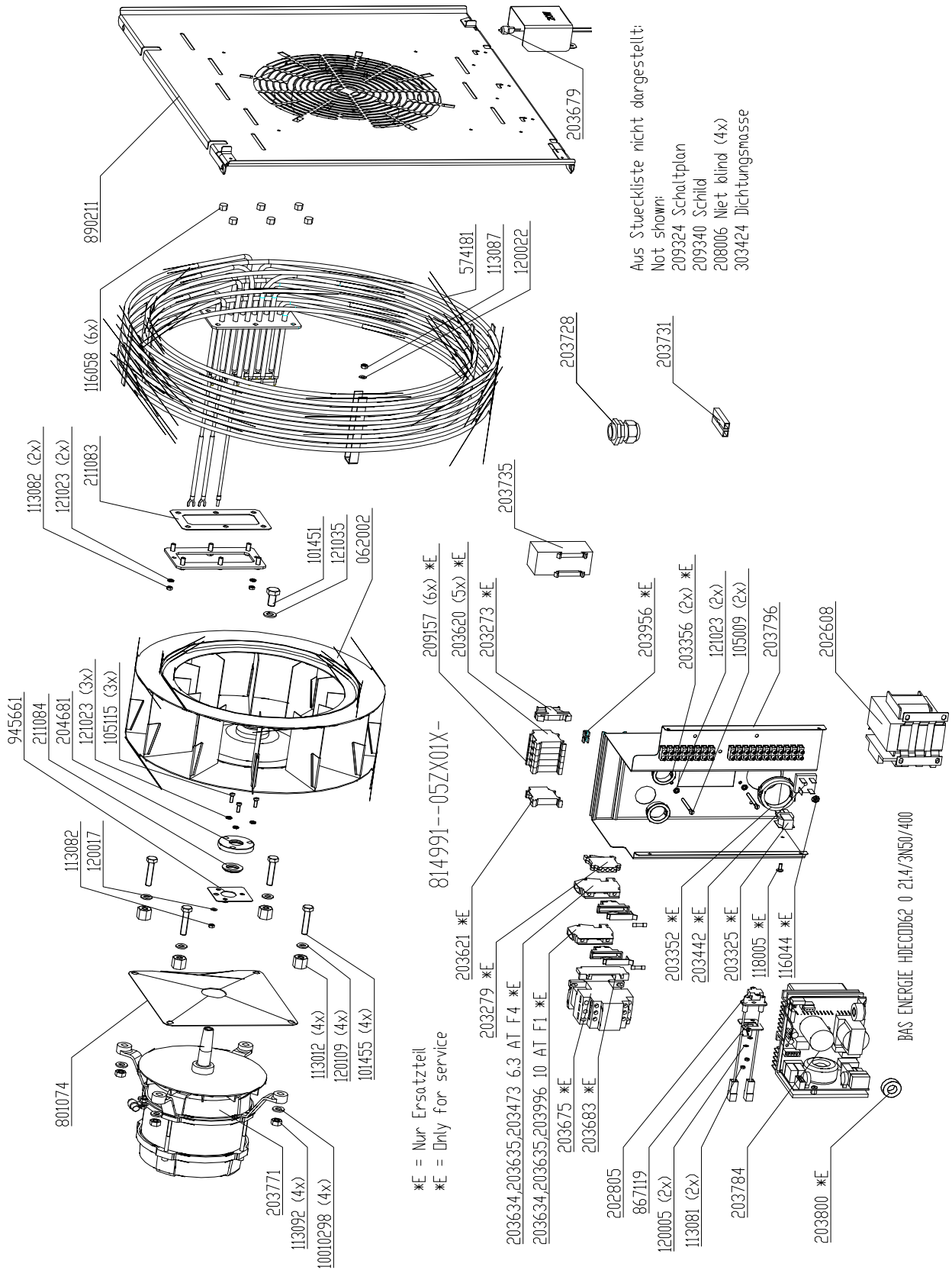
Front panel HD10.x Gold



Electric assembly 3NPE 400V HD6.1

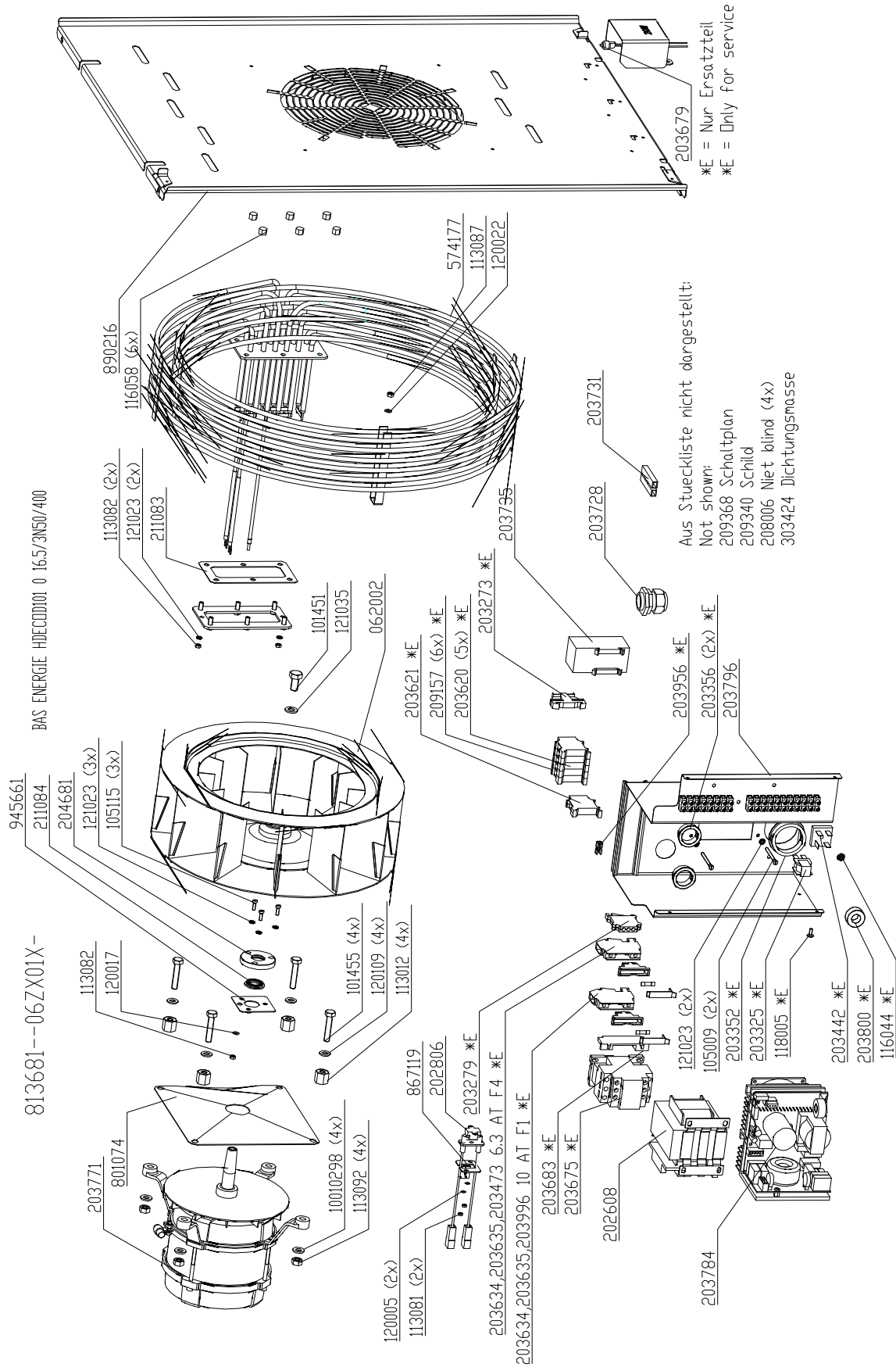


Electric assembly 3NPE 400V HD6.2

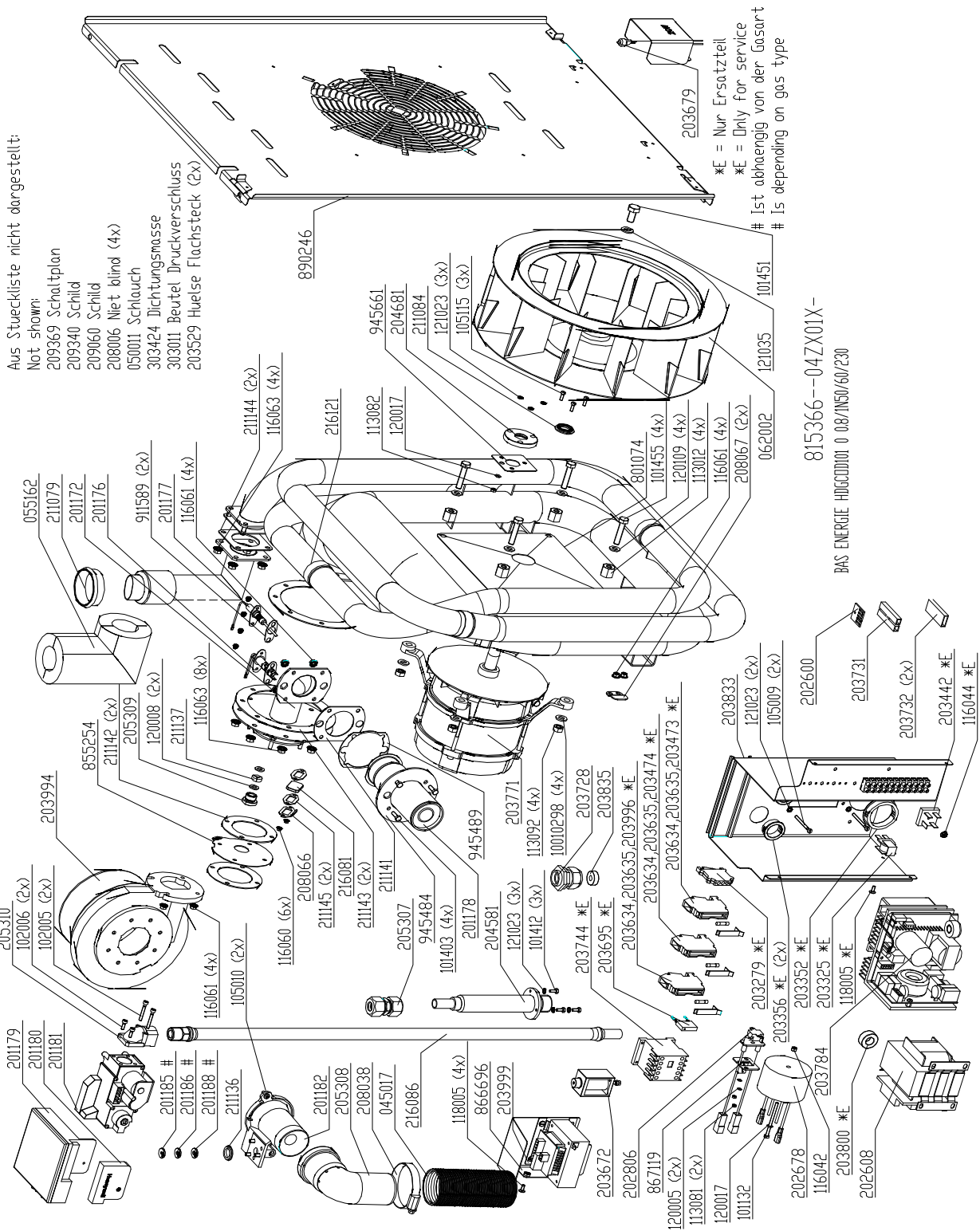


*E = Nur Ersatzteil
*E = Only for service

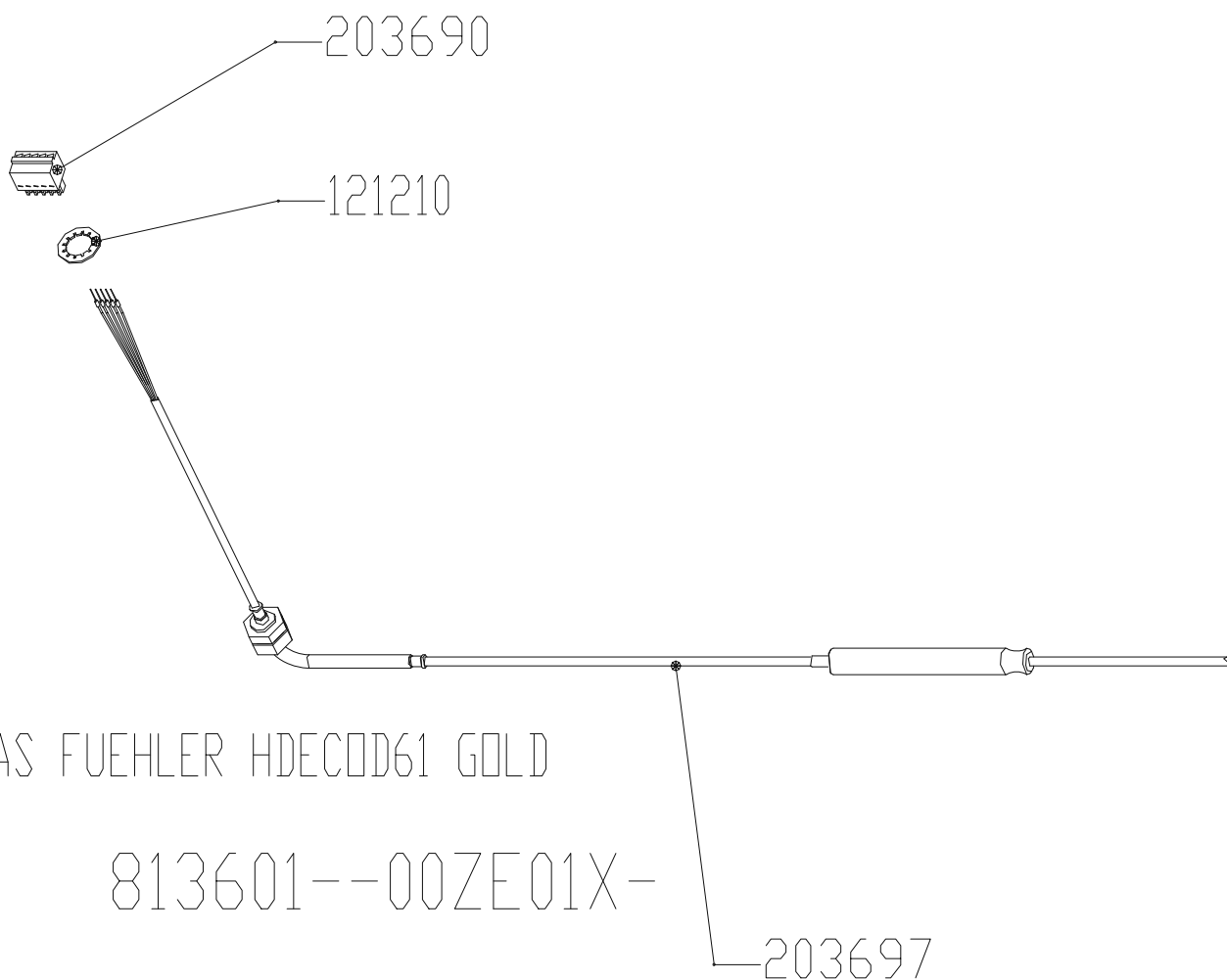
Electric assembly 3NPE 400V HD10.1



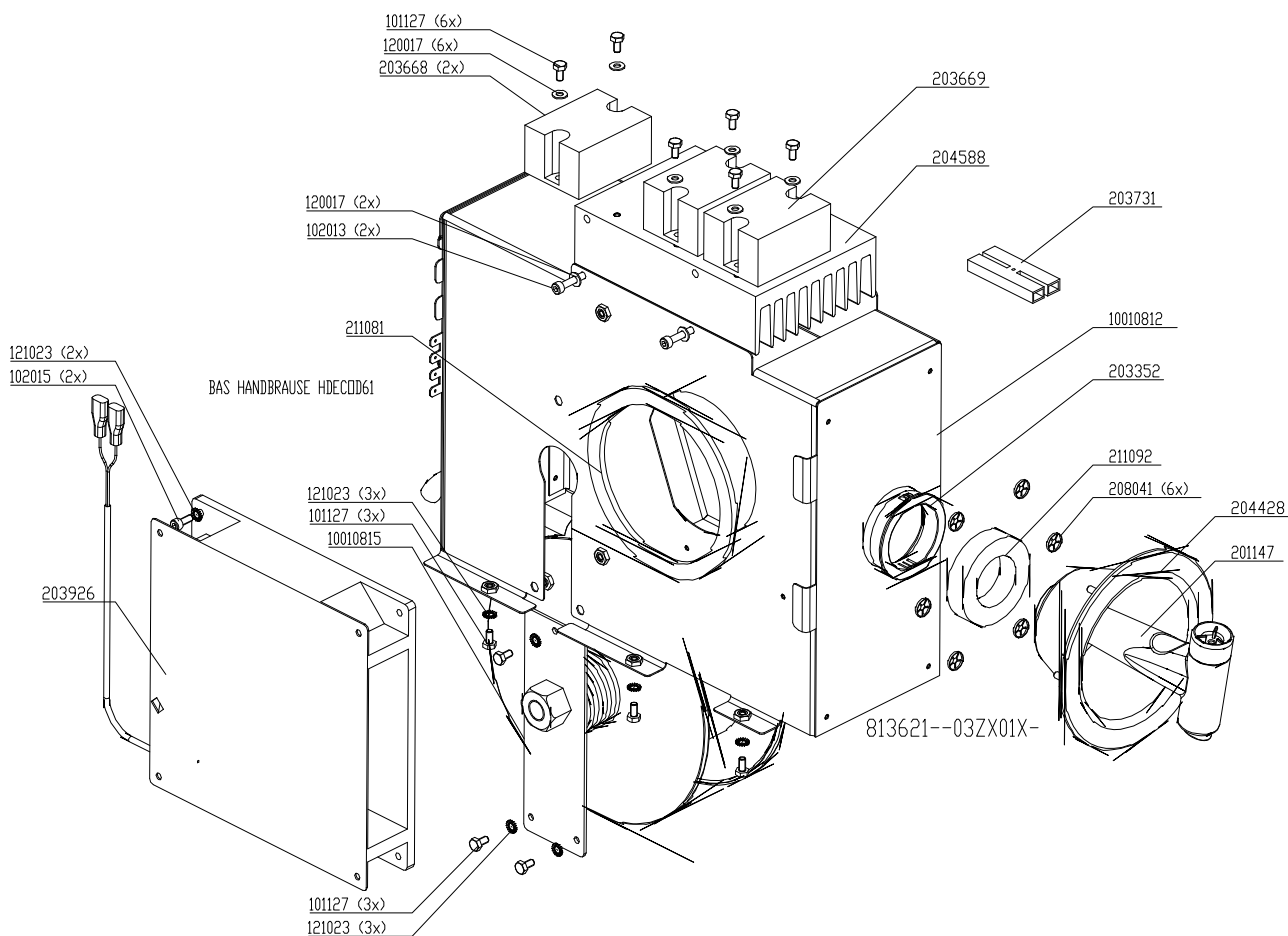
Gas assembly HD10.1



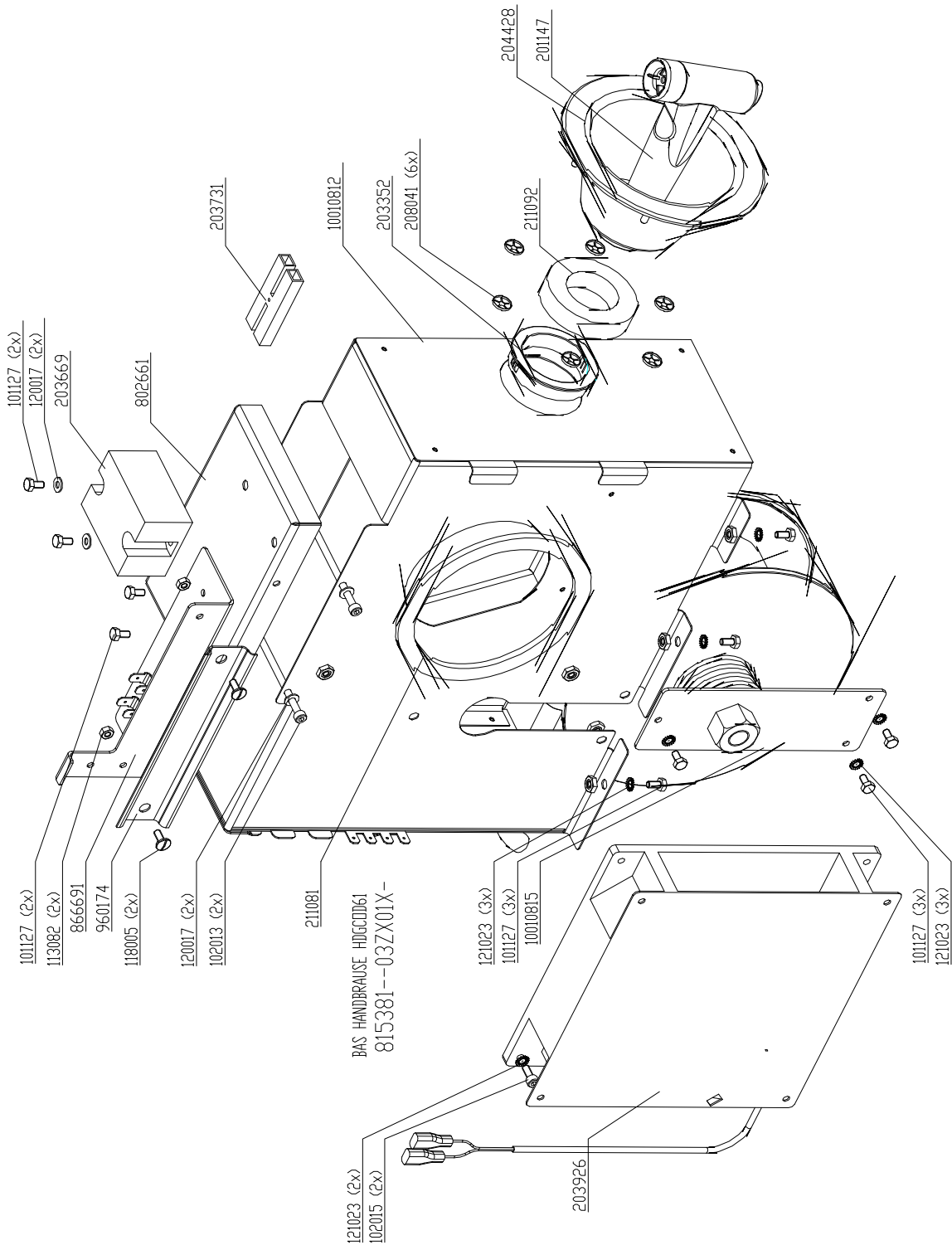
Core temperature probe HD6.x & HD10.x



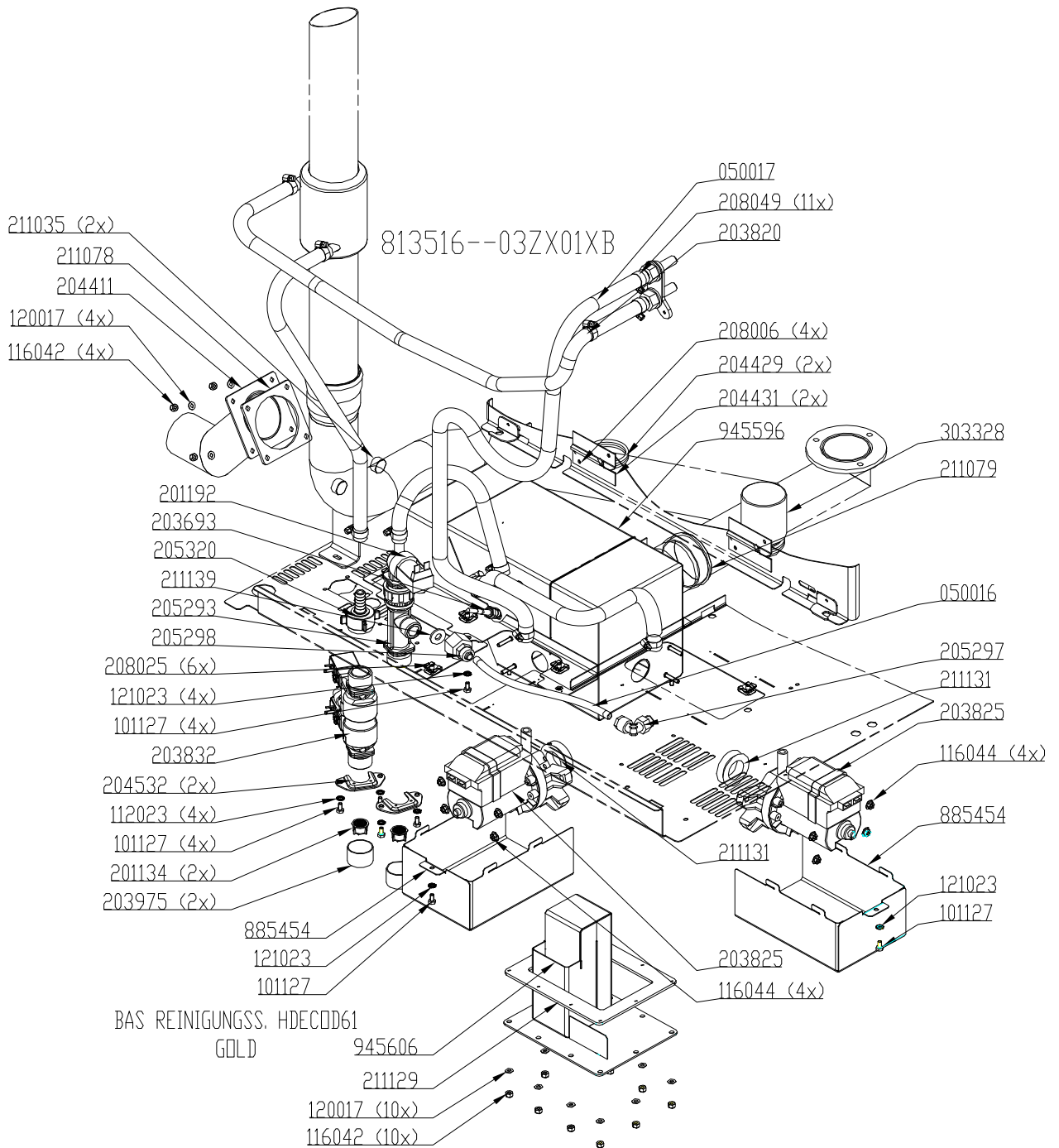
Tube carrier box & handshower HD6.x & HD10.x Electric



Tube carrier box & handshower 6.x & 10.x Gas

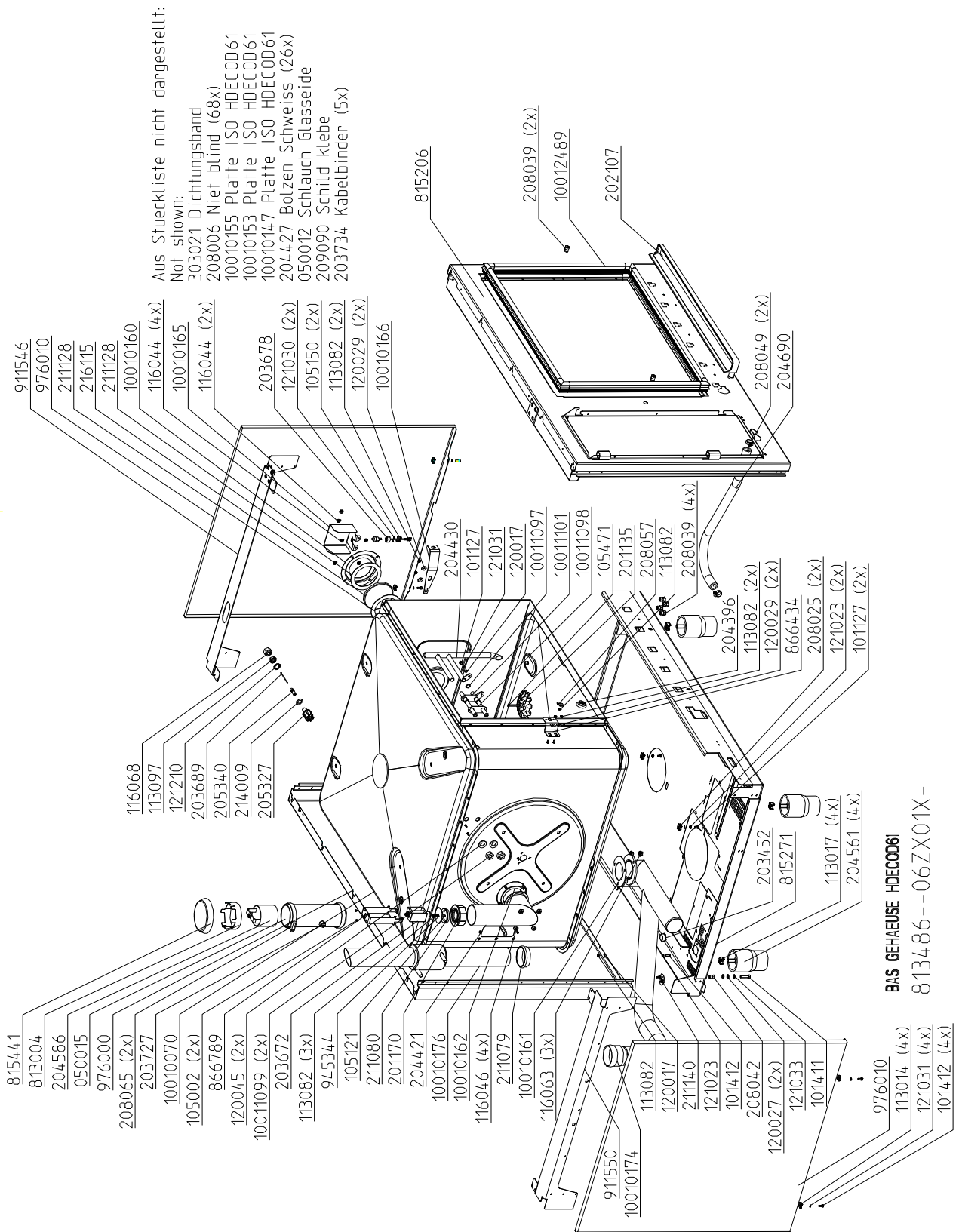


Water assembly 50Hz HD6.x & HD10.x

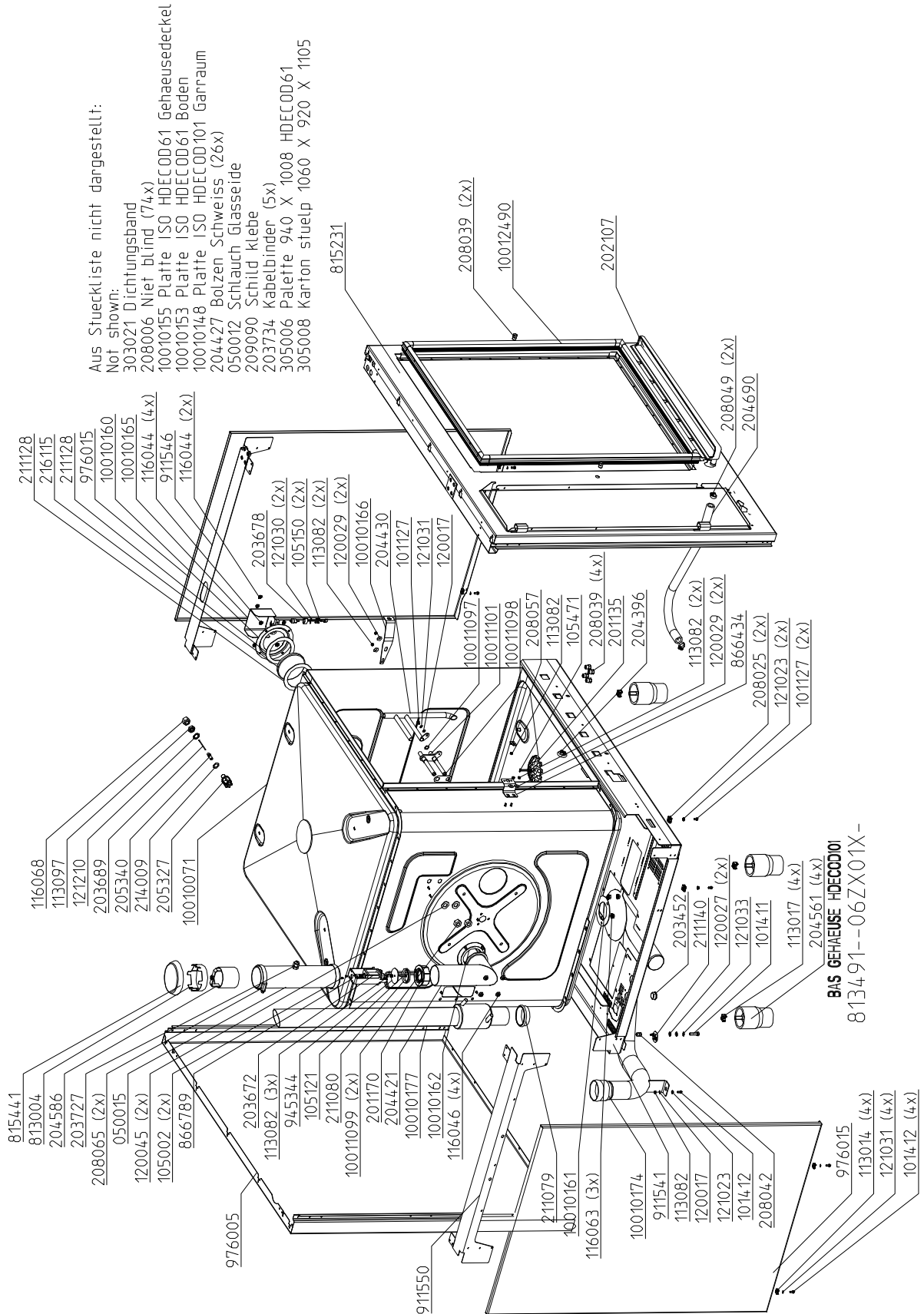


Note! Part number for 60Hz pump = #203826

Chassis HD6.x Electric

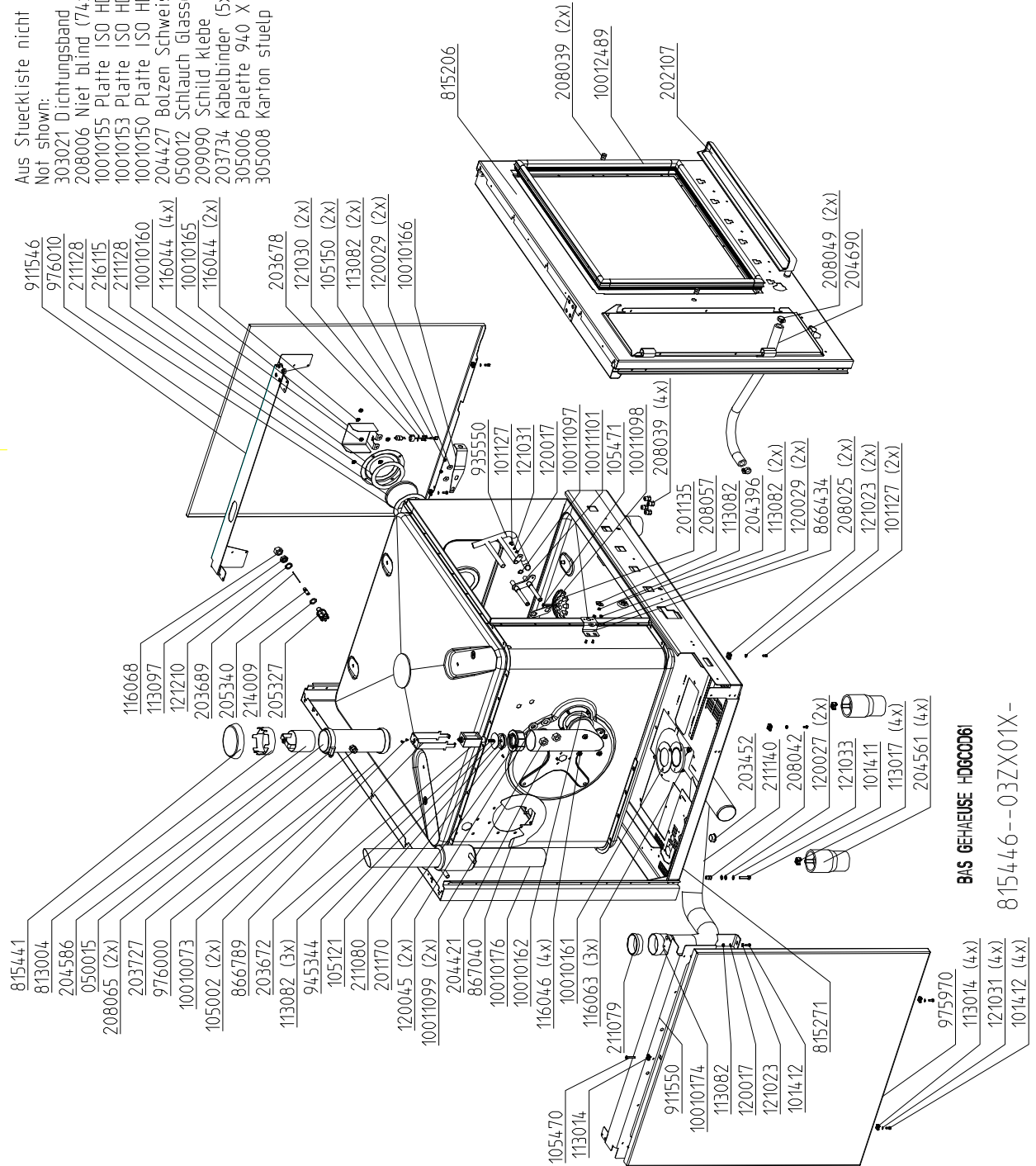


Chassis HD10.x Electric



Chassis HD6.x Gas

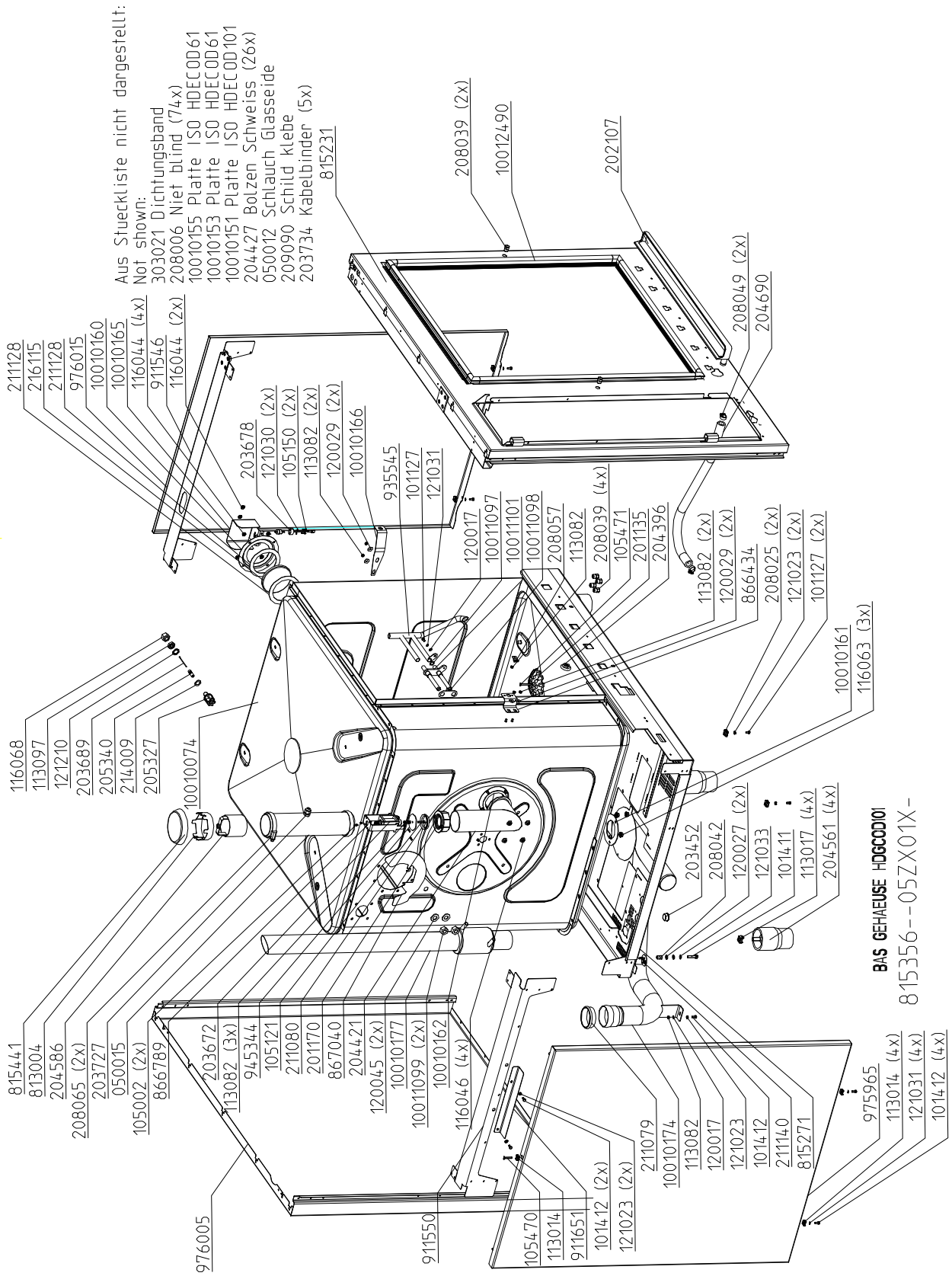
Aus Stueckliste nicht dargestellt:
 Not shown:
 303021 Dichtungsbund
 208006 Niet blind (74x)
 10010155 Platte ISO HDEC0061 Gehaeusedeckel
 10010153 Platte ISO HDEC0061 Boden
 10010150 Platte ISO HDGC0061 Garraum
 204427 Bolzen Schweiiss (26x)
 050012 Schlauch Glasseride
 209090 Schild klebe
 203734 Kabelbinder (5x)
 305006 Palette 940 X 1080 HDEC0061
 305008 Kanton stueelp 1060 X 920 X 1105



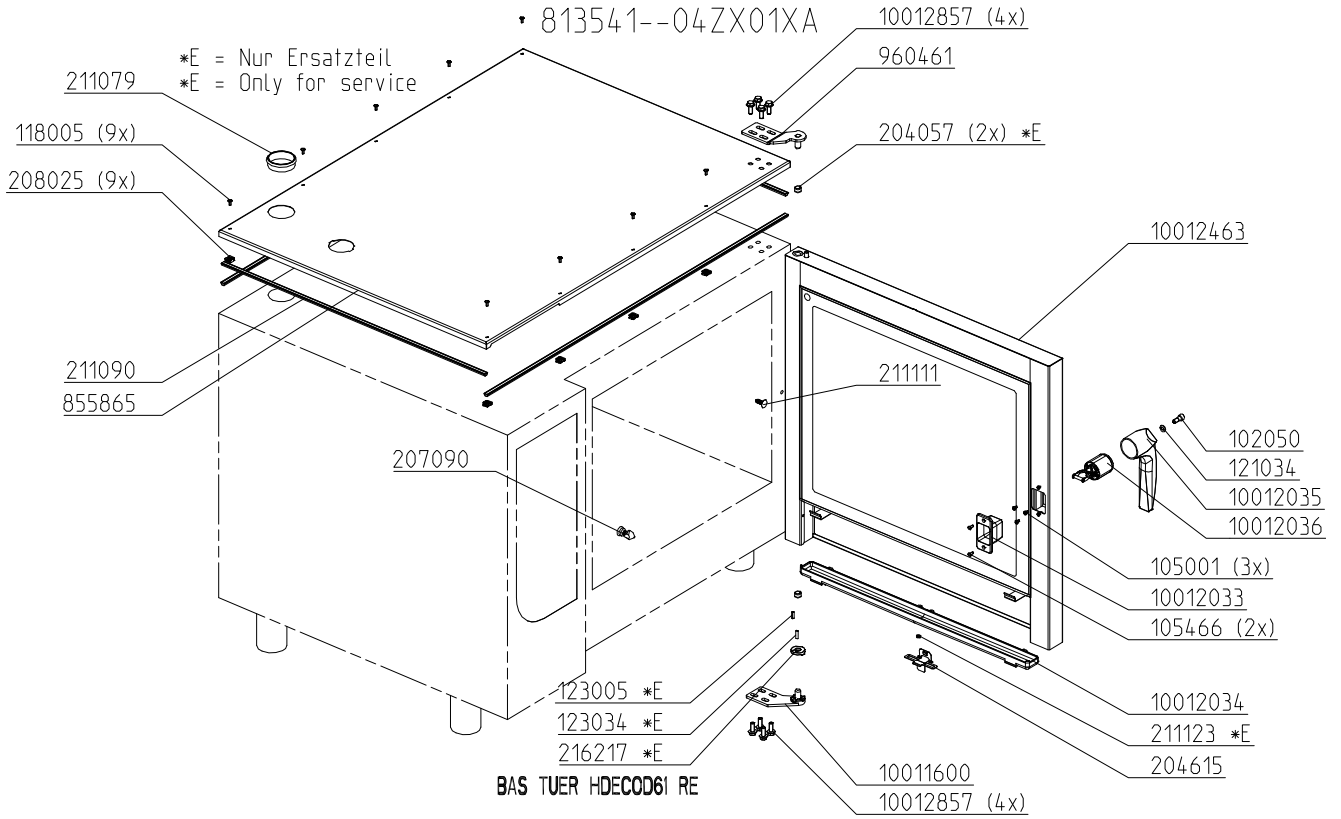
BAS GEHAUSE HDGC0061

815446--03ZX01X-

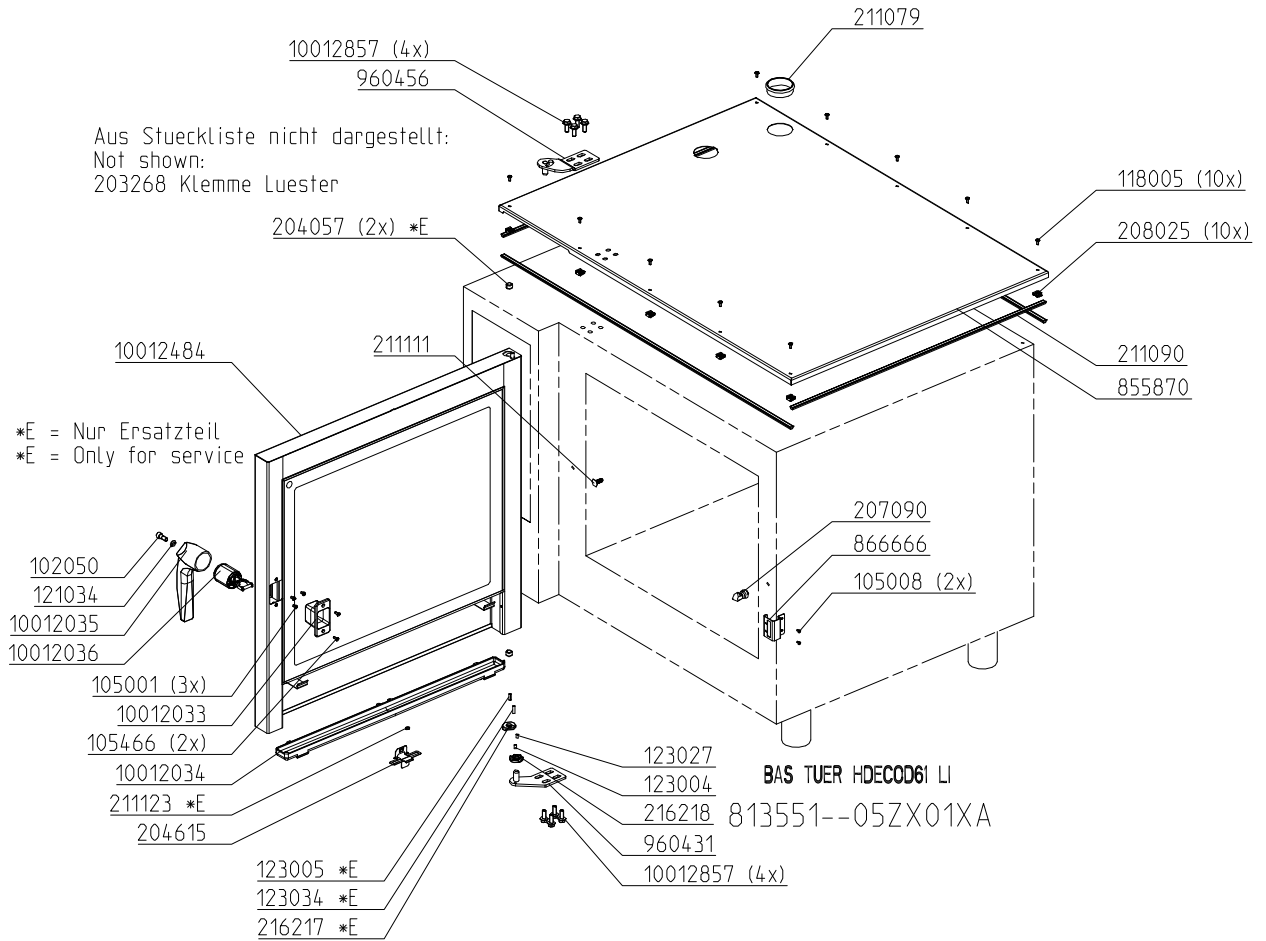
Chassis HD10.x Gas



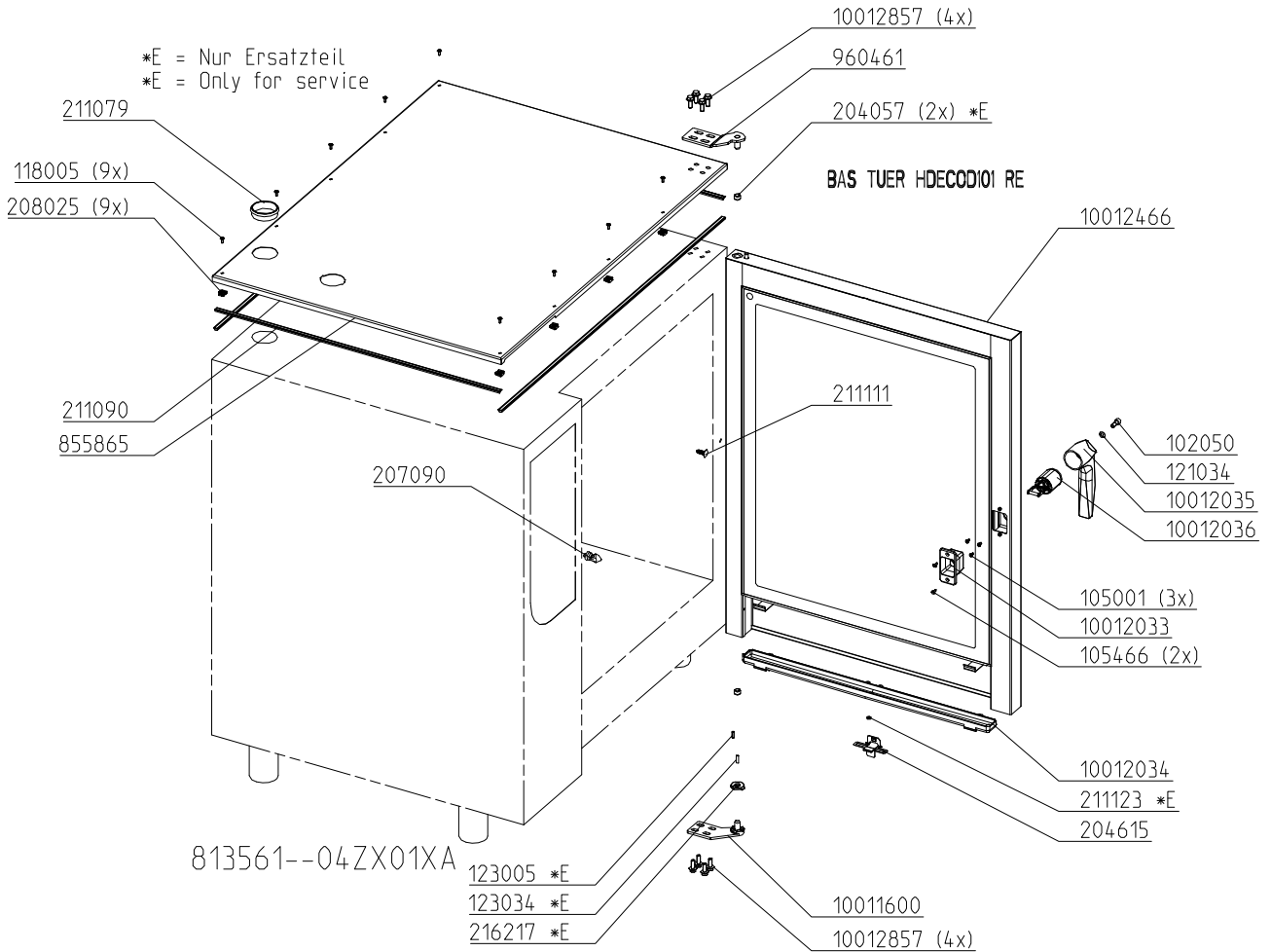
Chassis door area HD6.x, right hinged (Electric)



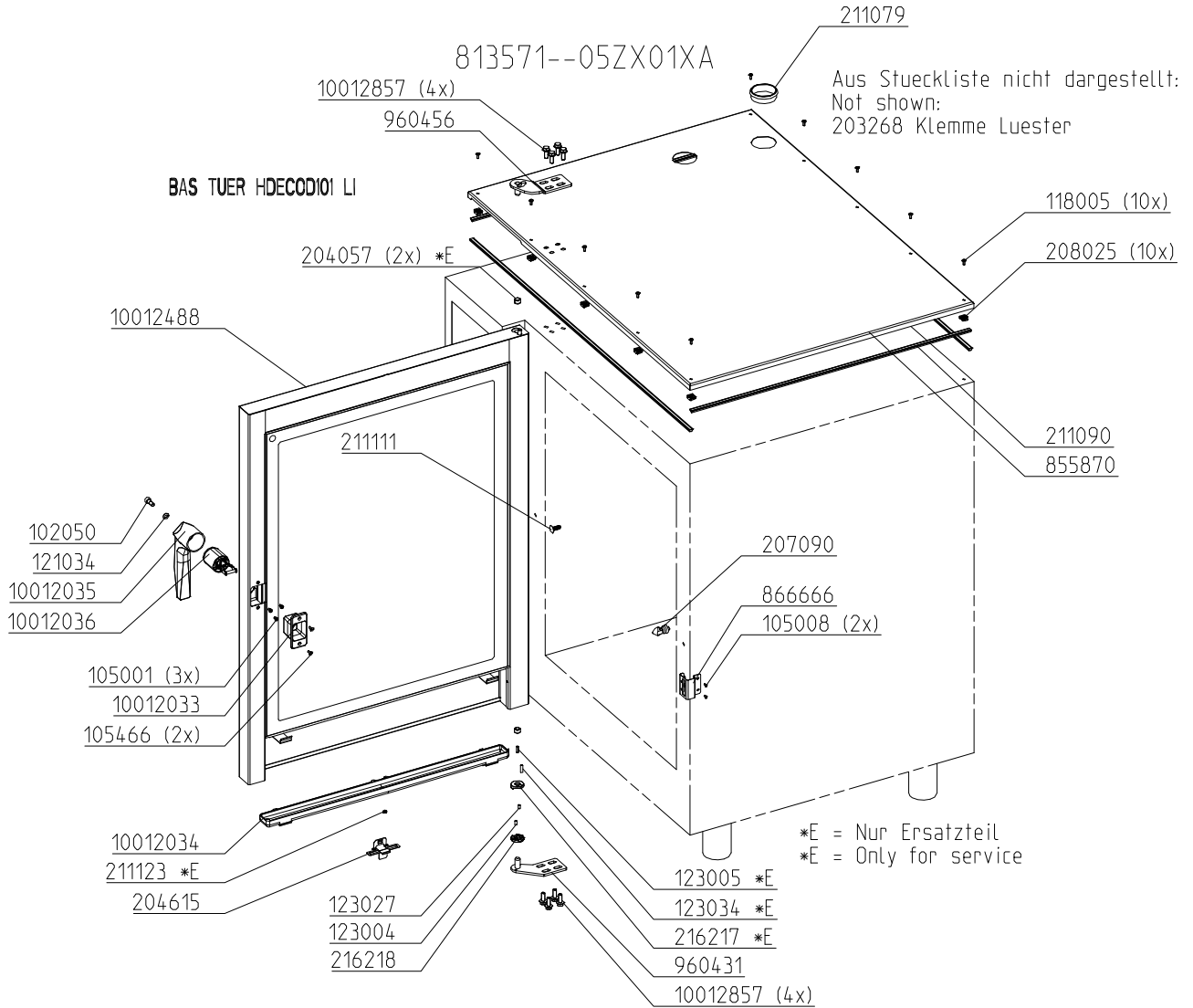
Chassis door area HD6.x, left hinged (Electric)



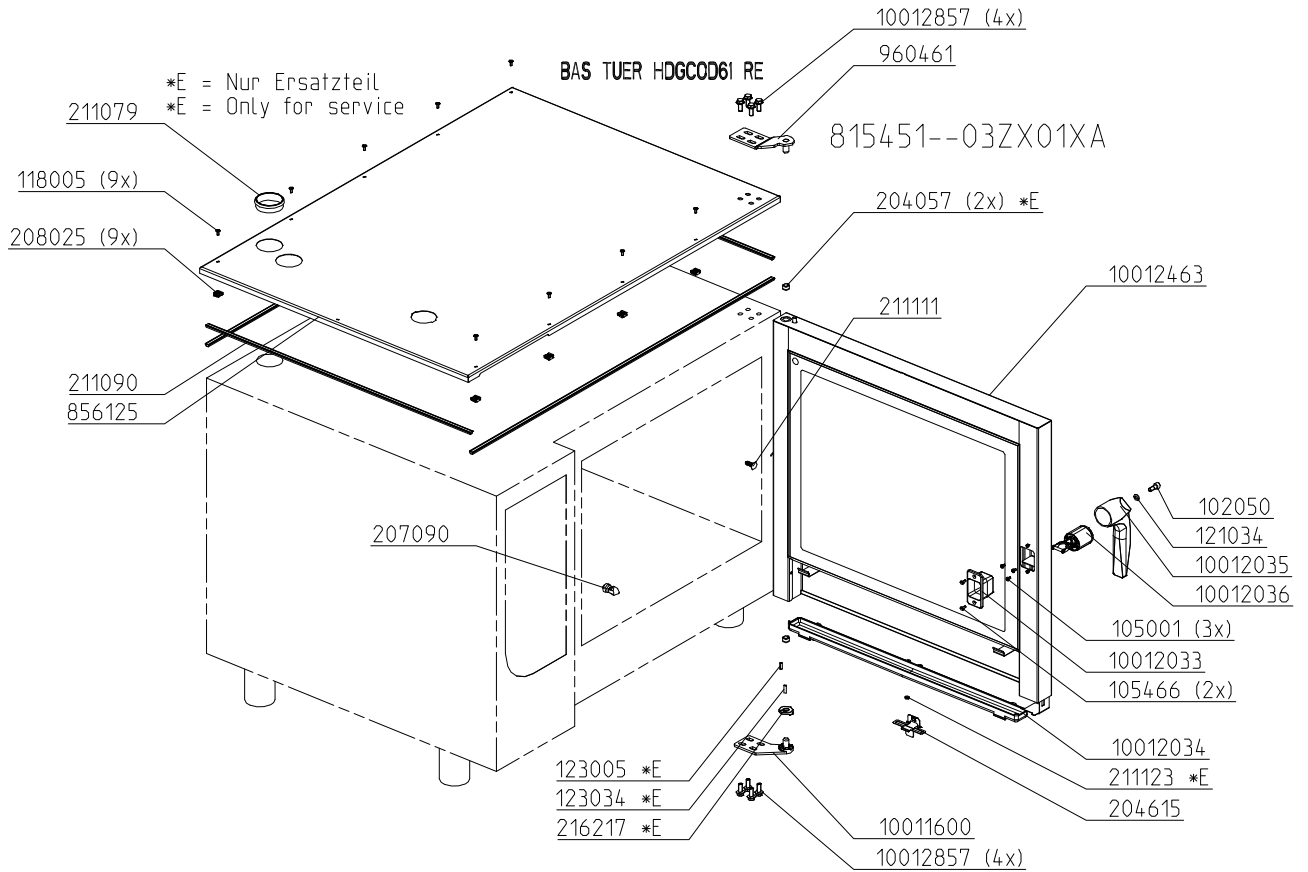
Chassis door area HD10.x, right hinged (Electric)



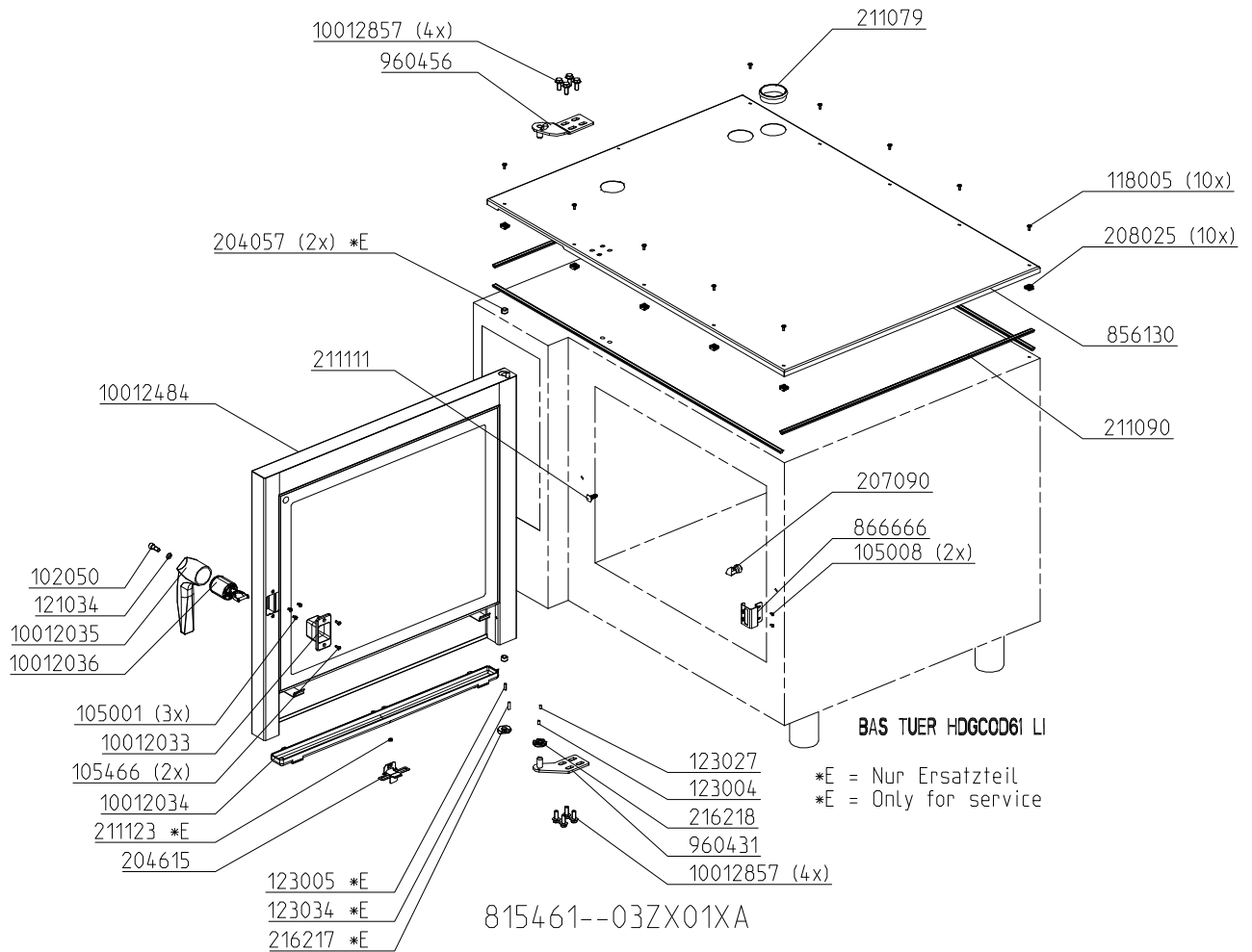
Chassis door area HD10.x, left hinged (Electric)



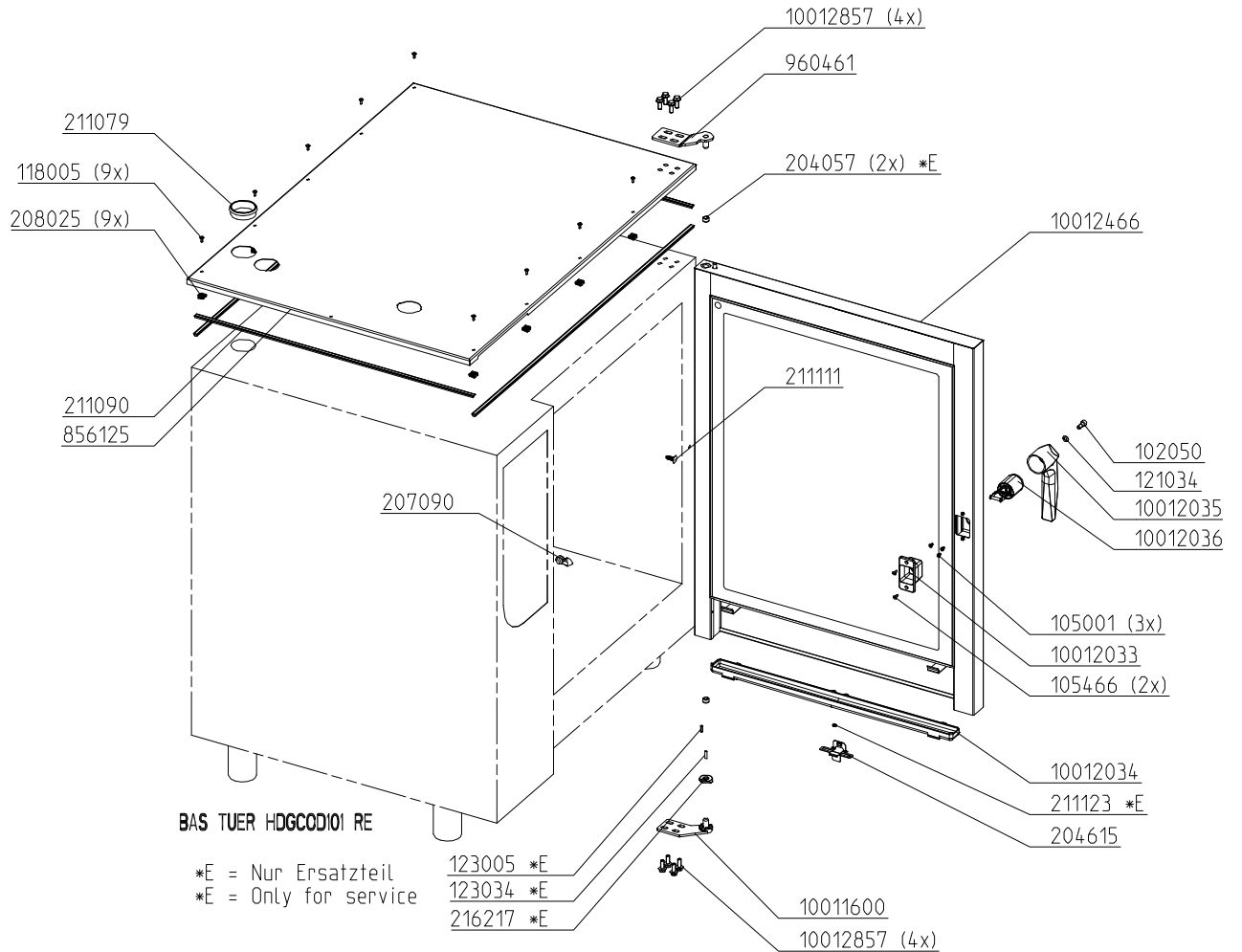
Chassis door area HD6.x, right hinged (Gas)



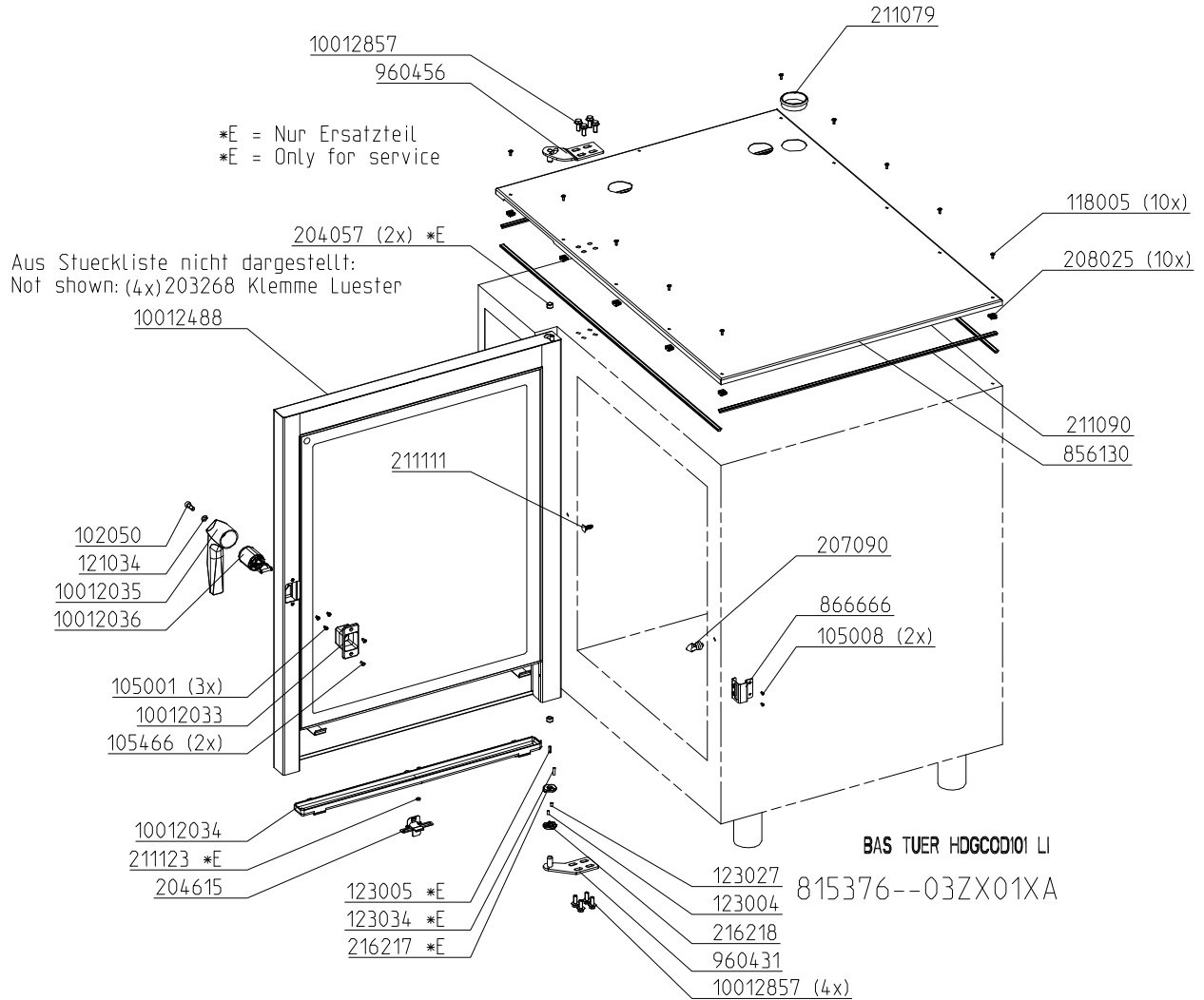
Chassis door area HD6.x, left hinged (Gas)



Chassis door area HD10.x, right hinged (Gas)



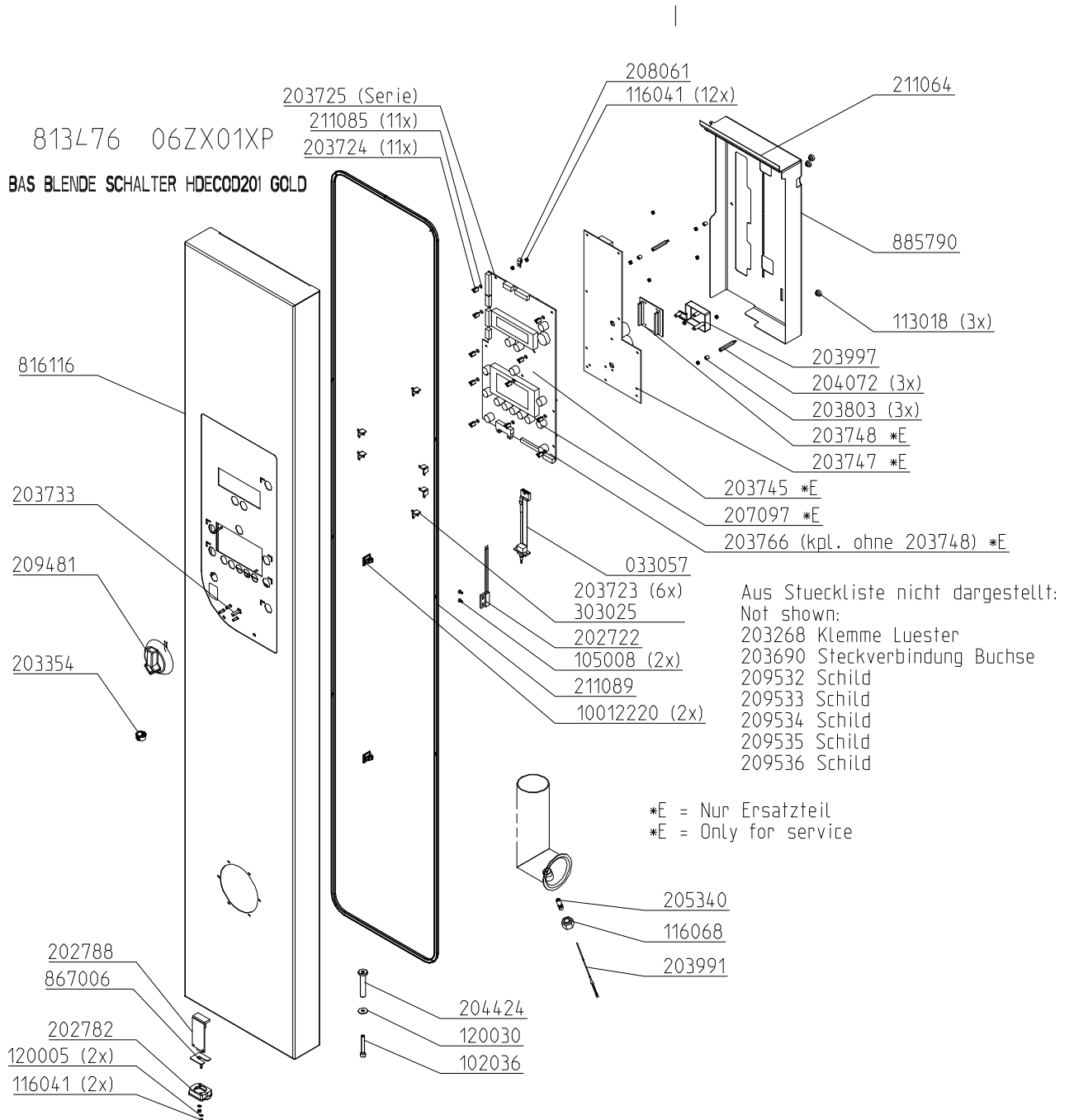
Chassis door area HD10.x, left hinged (Gas)



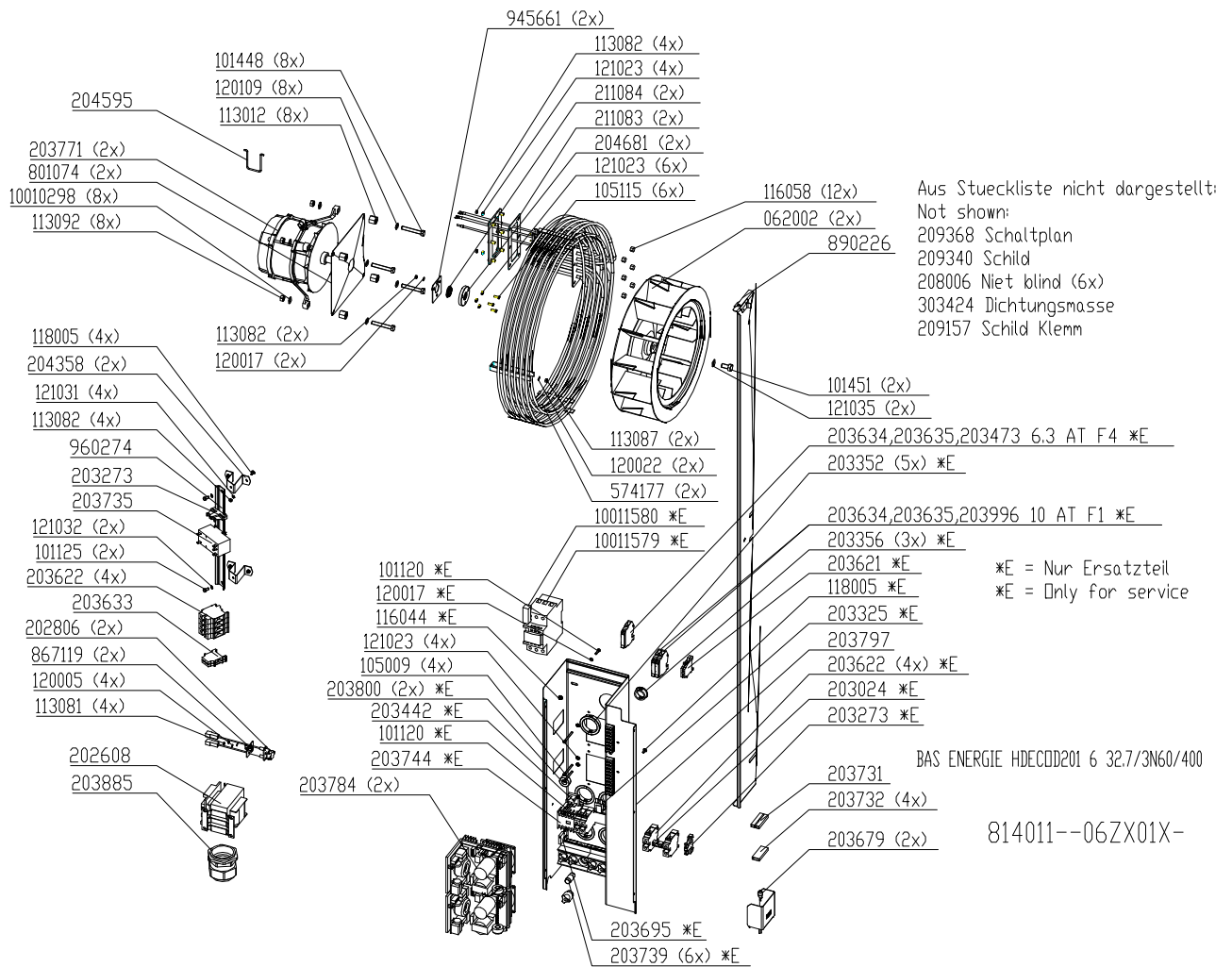
Exploded drawings 20.x

Electric & Gas

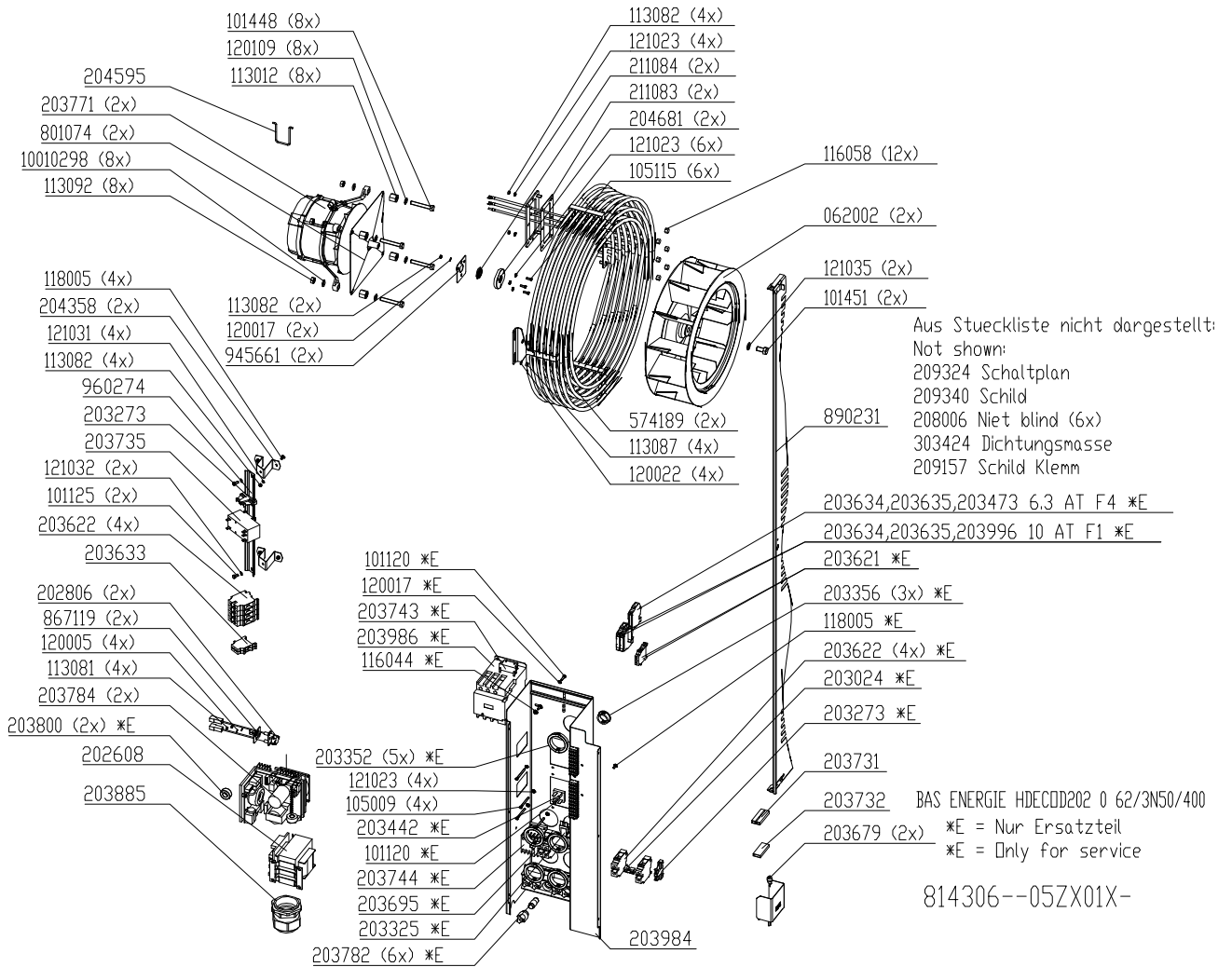
Front panel HD20.x Gold



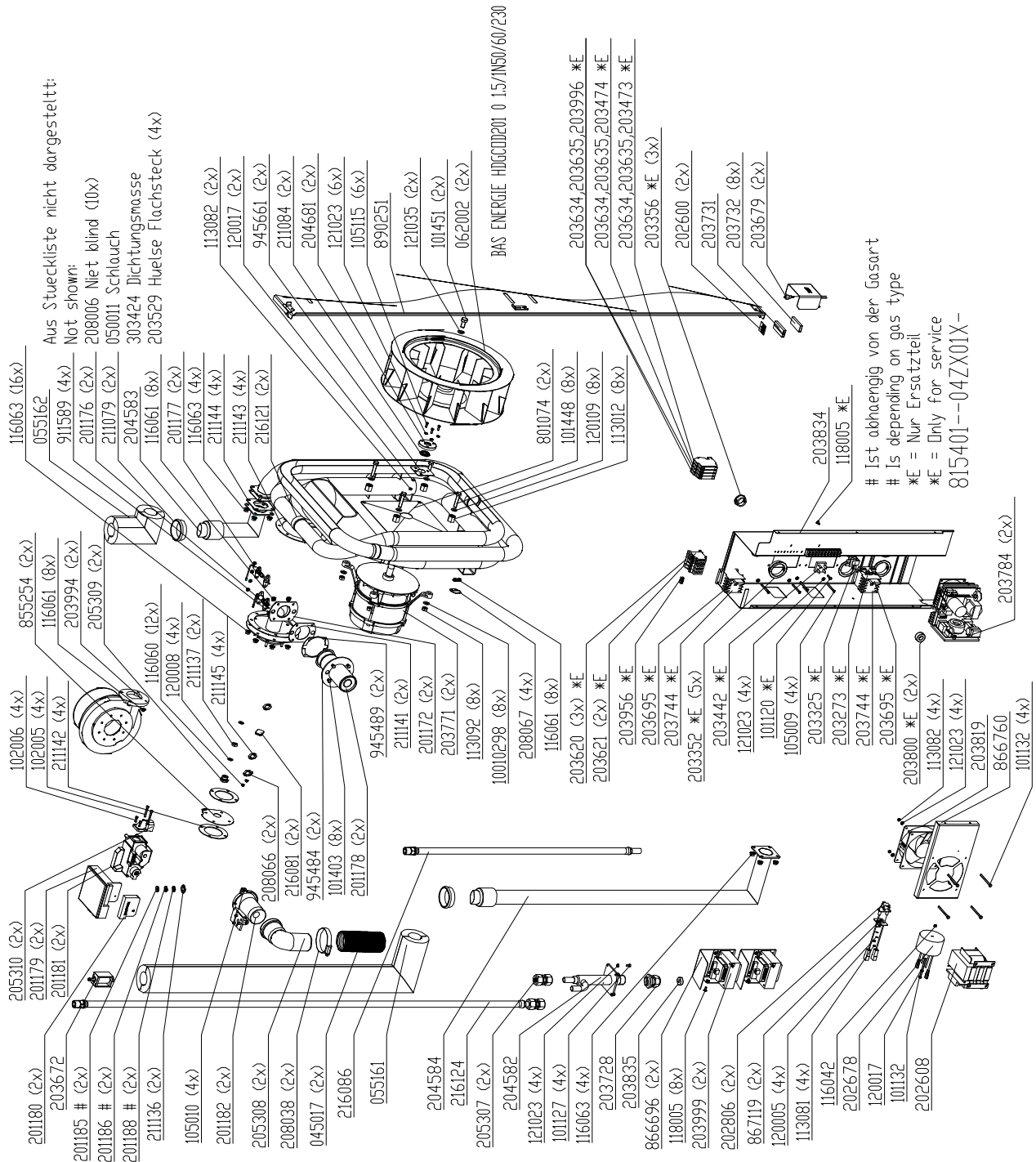
Electric assembly 3NPEAC 400V HD20.1



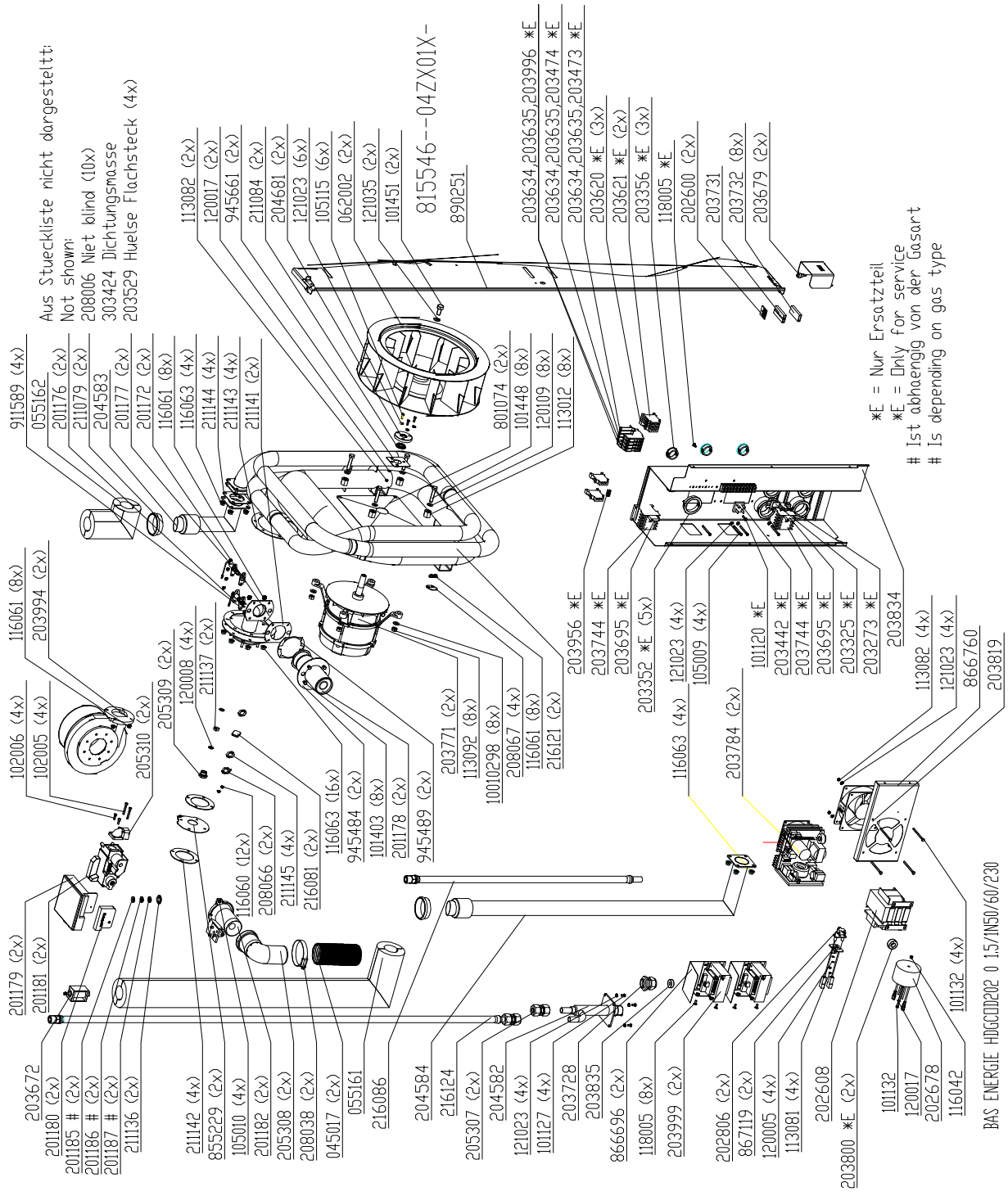
Electric assembly 3NPEAC 400V HD20.2



Gas assembly HD20.1



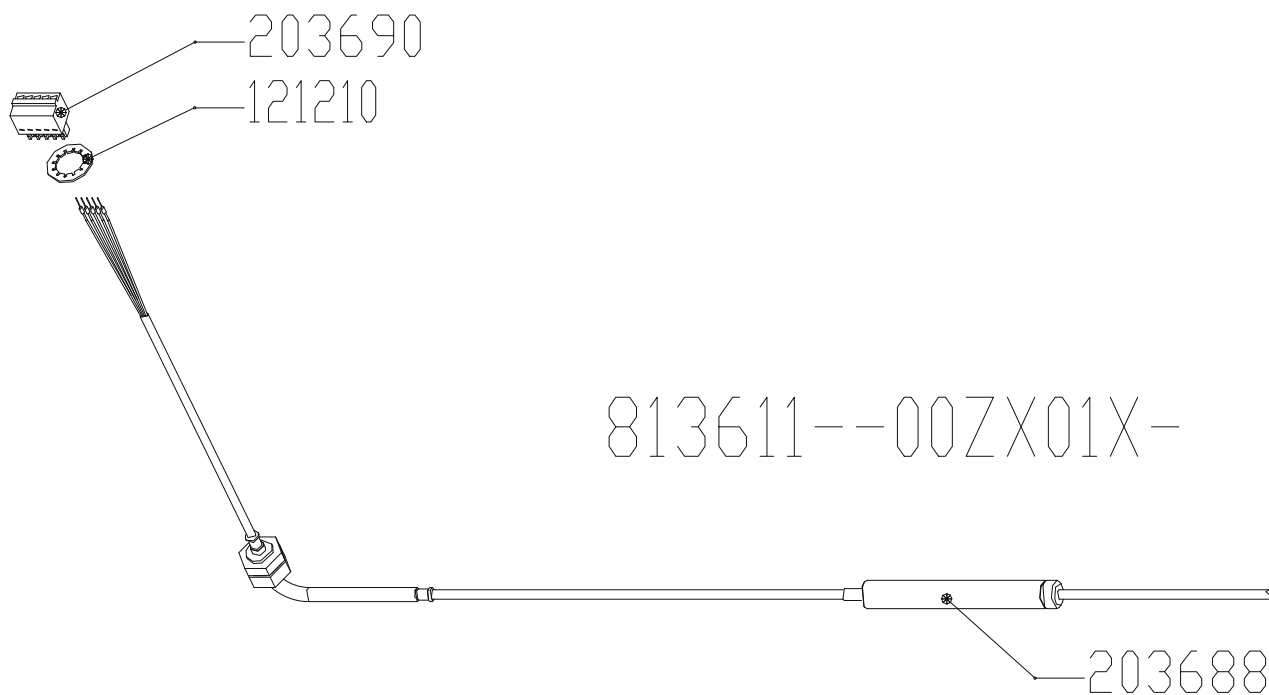
Gas assembly HD20.2



*E = Nur Ersatzteil
 *E = Only for service
 # Ist abhängig von der Gasart
 # Is depending on gas type

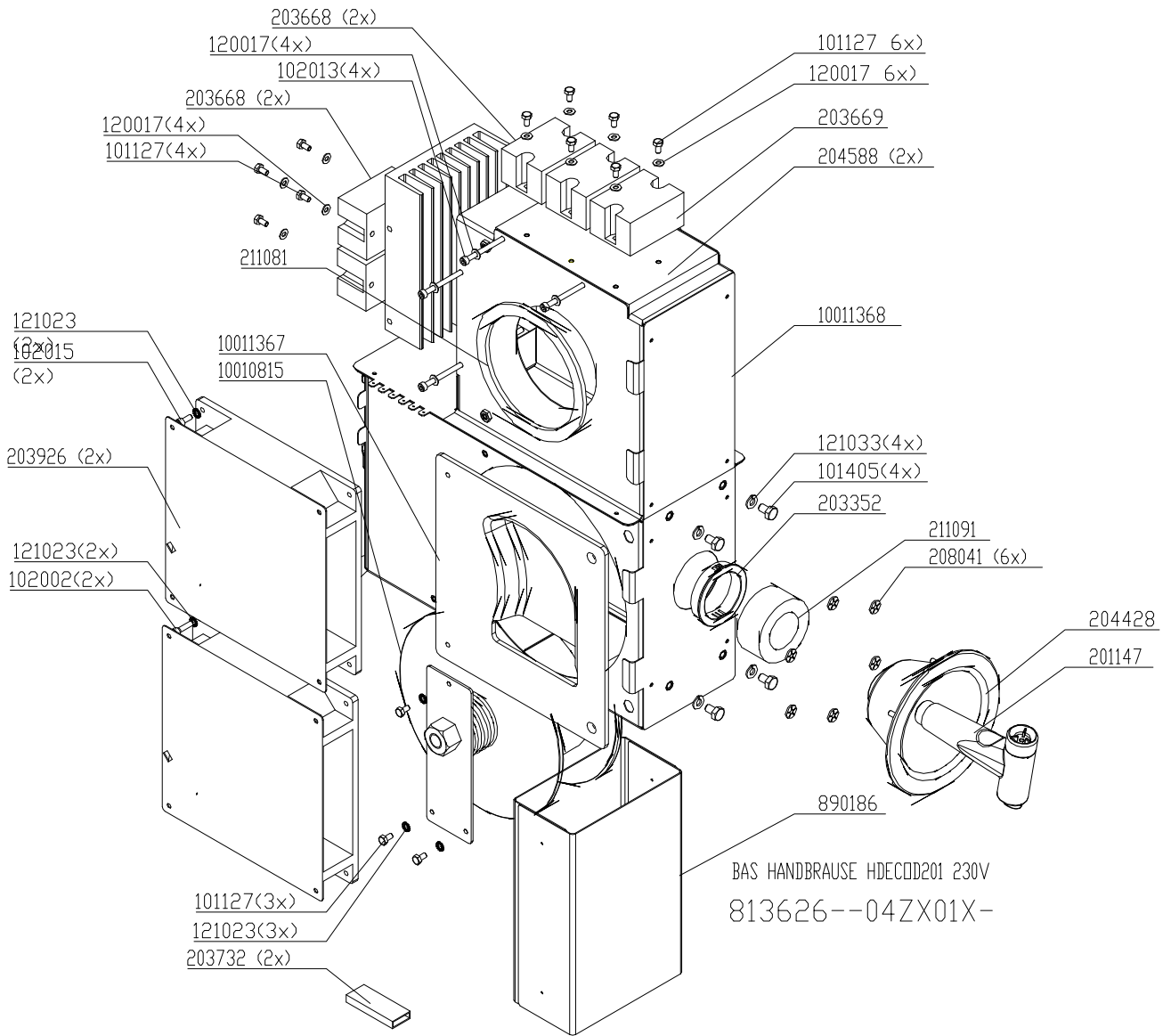
BAS ENERGIE HDGDD202 0 1.5/1N50/60/230

Core temperature probe HD20.x

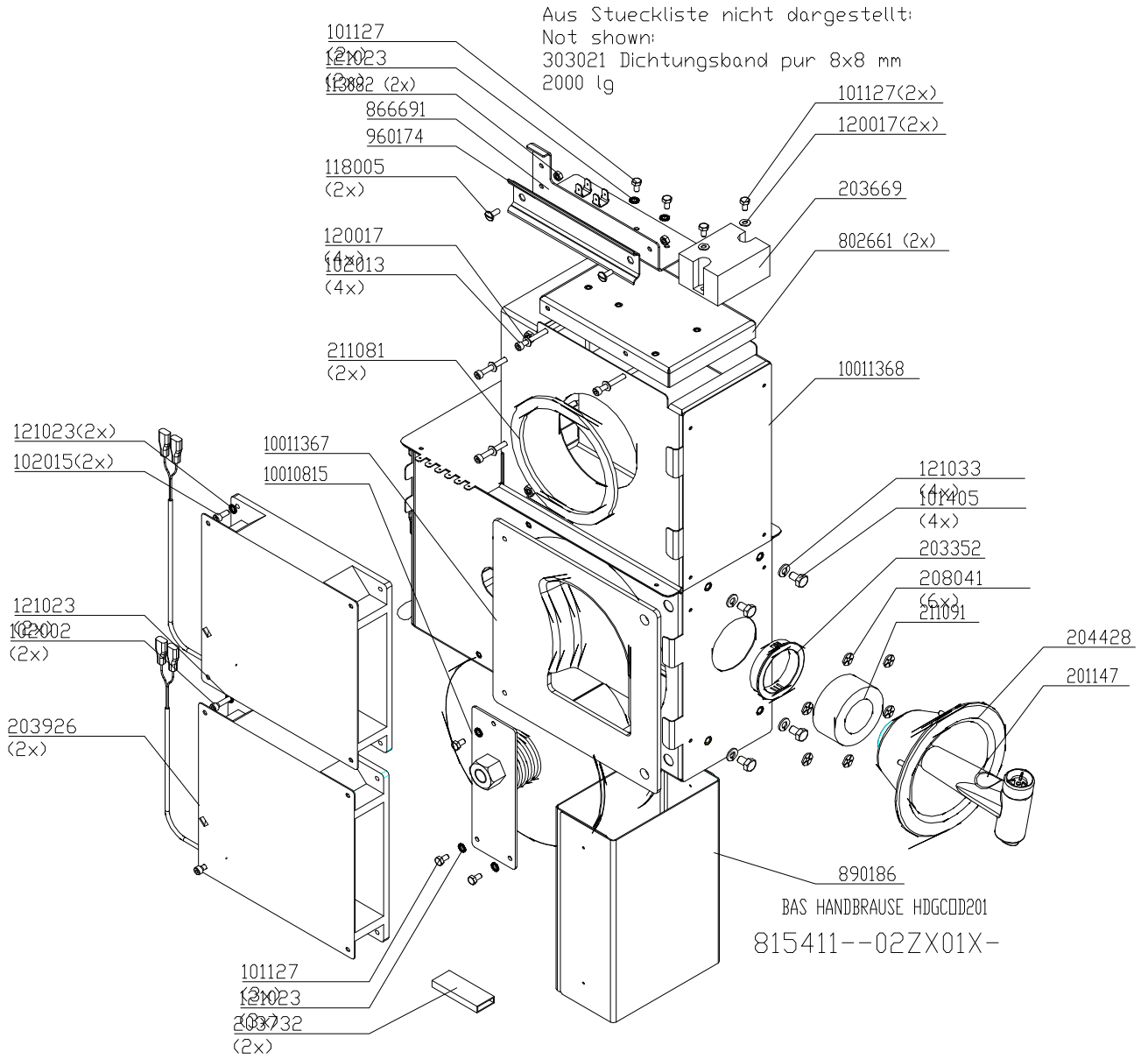


BAS FUEHLER HDECOD201 GOLD

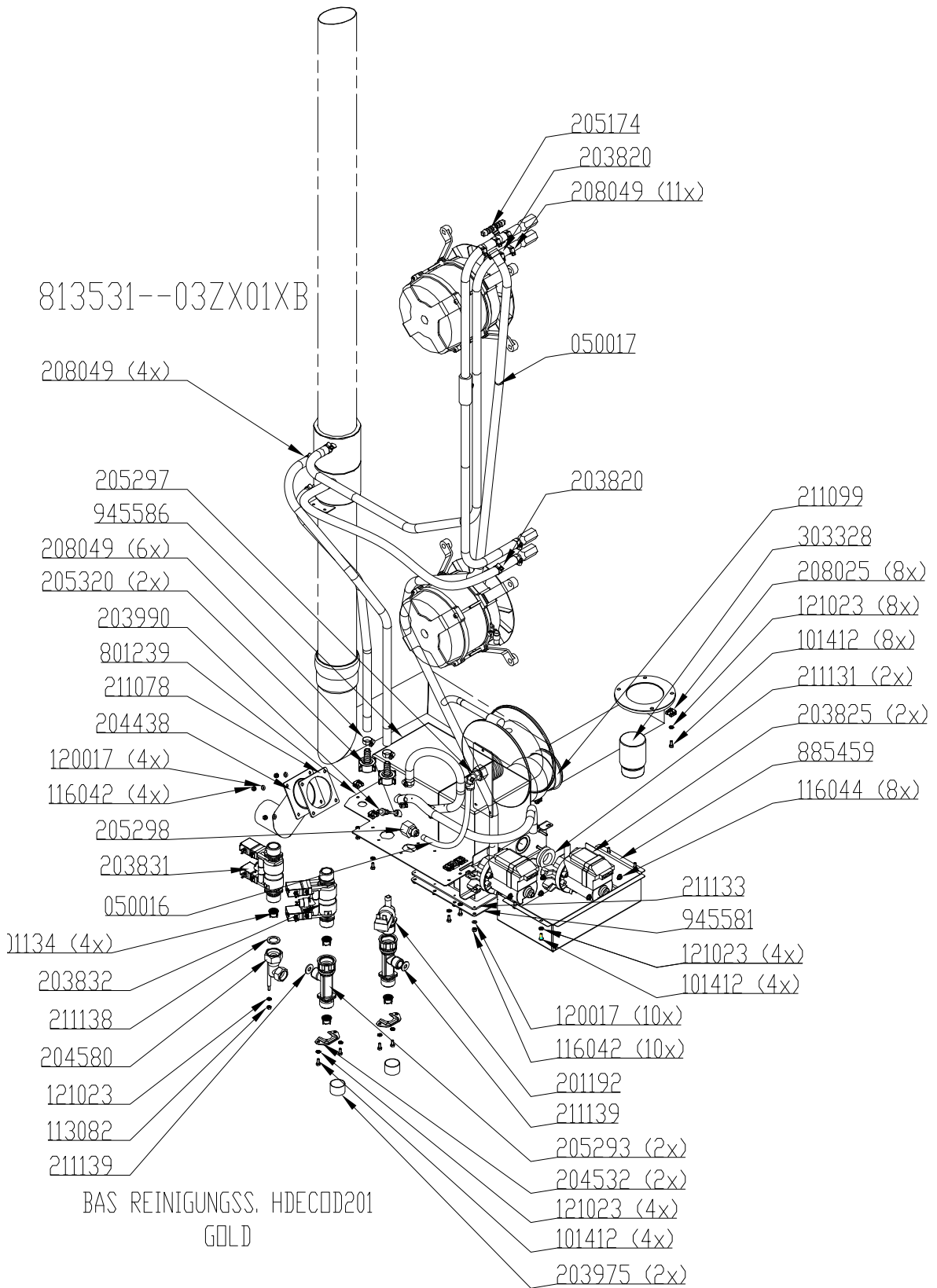
Tube carrier box & handshower HD20.x (Electric)



Tube carrier box & handshower HD20.x Gas



Water assembly 50Hz HD20.x

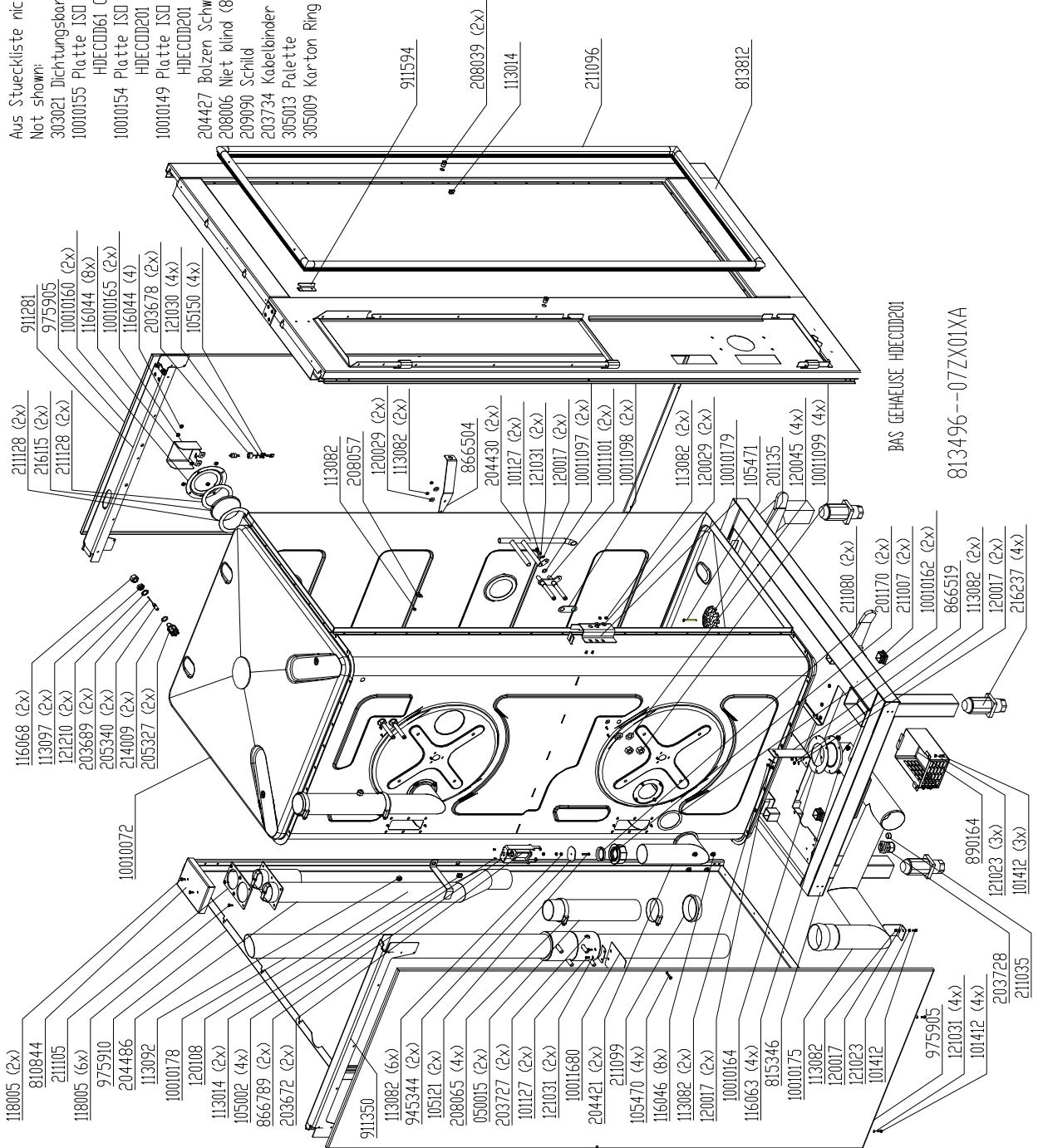


Note! Cleaning pumps 60 Hz = #203826

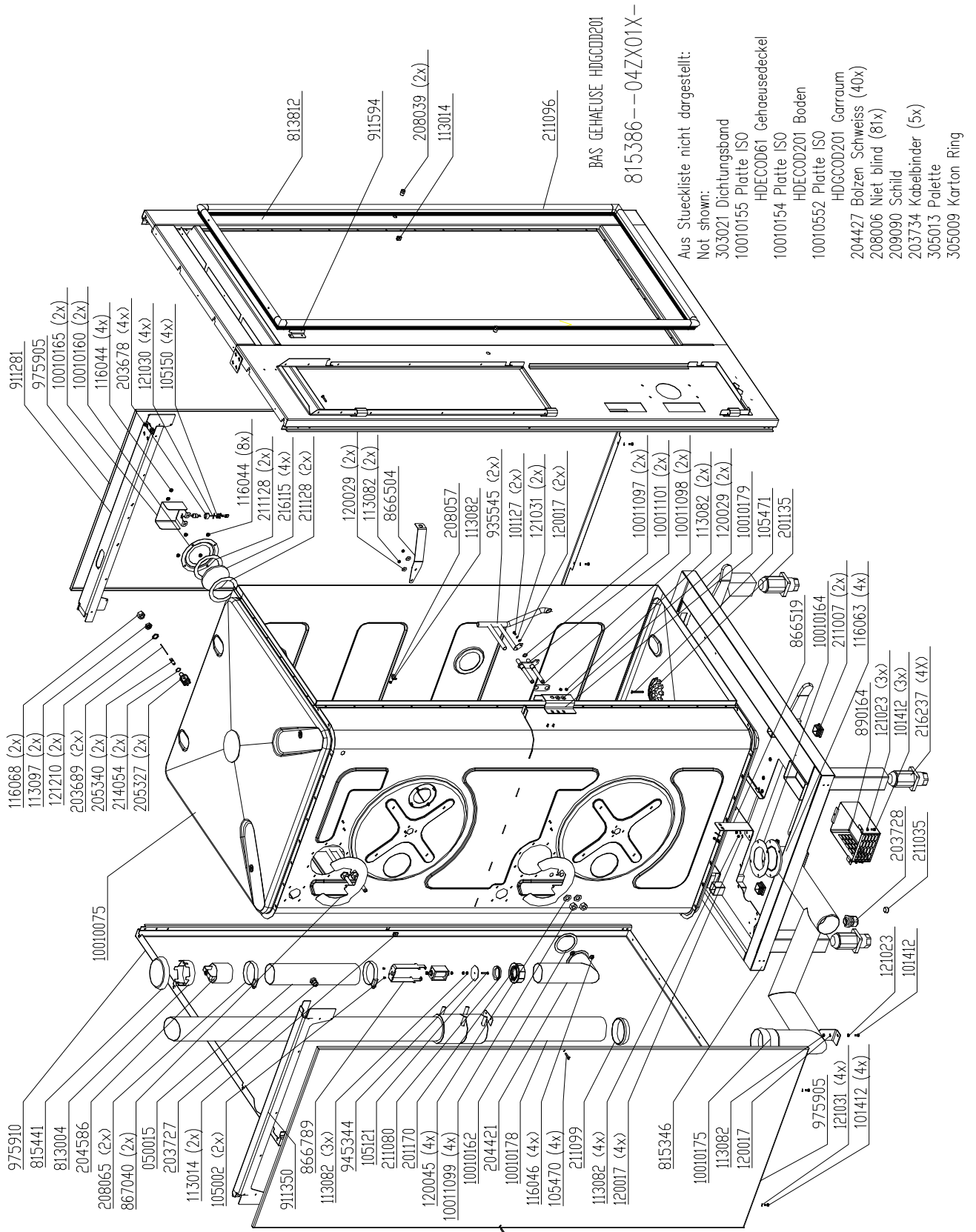
Chassis HD20.x (Electric)

Aus Stueckliste nicht dargestellt:
Not shown:

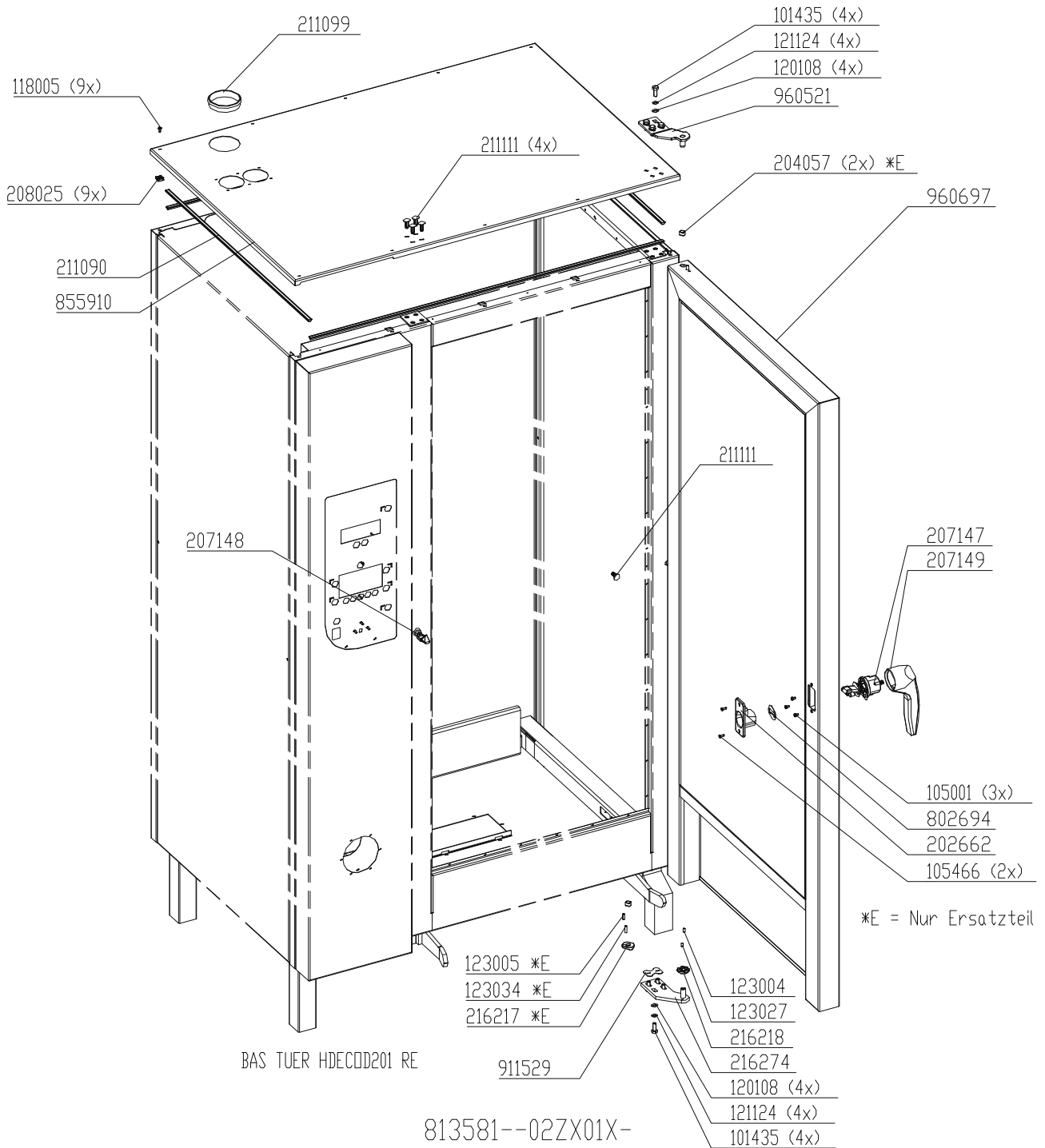
- 303021 Dichtungsband
- 10010155 Platte ISO
- HDECDD61 Gehaeusedeckel
- 10010154 Platte ISO
- HDECDD201 Boden
- 10010149 Platte ISO
- HDECDD201 Garraum
- 204427 Bolzen Schweiss (40x)
- 208006 Niet blind (81x)
- 209090 Schild
- 203734 Kabelbinder (5x)
- 305013 Palette
- 305009 Karton Ring



Chassis HD20.x (Gas)

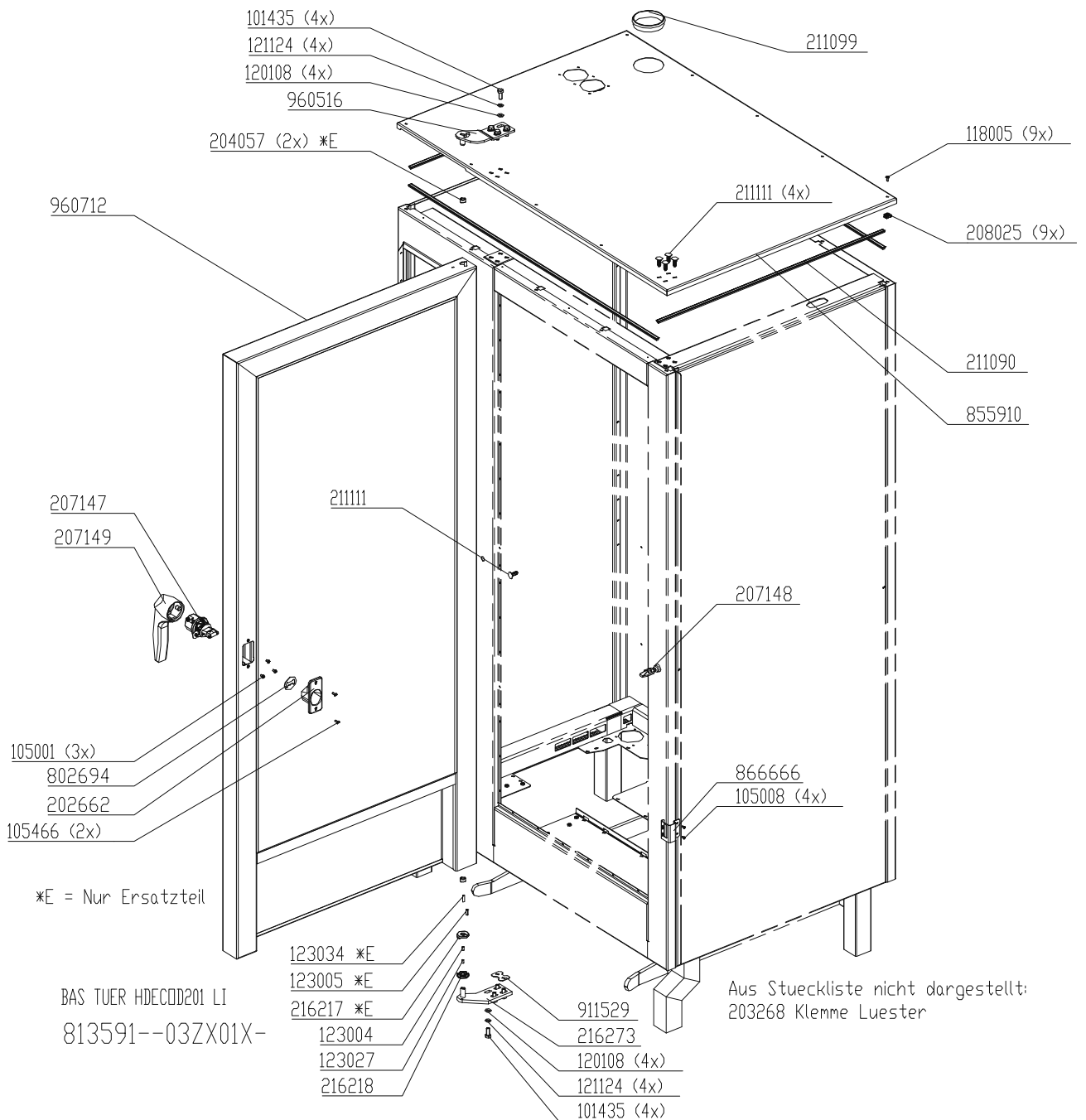


Chassis door area HD20.x, right hinged (Electric)



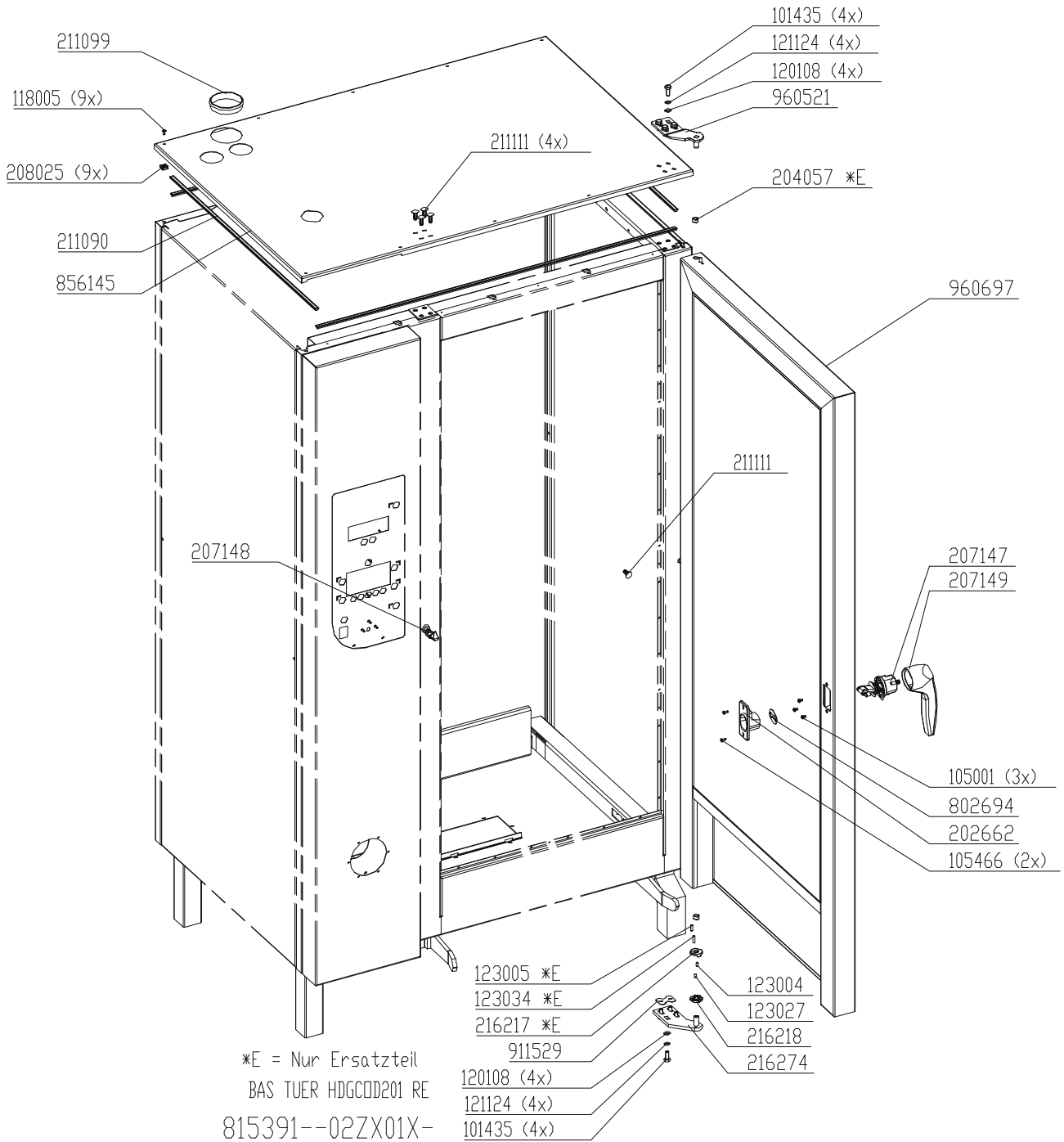
Bis S/N 09021515: #211104 Profildichtung Garraumtür (mit Pactan eingeklebt)
Ab S/N 09021516: Steckbare Profildichtung #211171

Chassis door area HD20.x, left hand hinged (Electric)



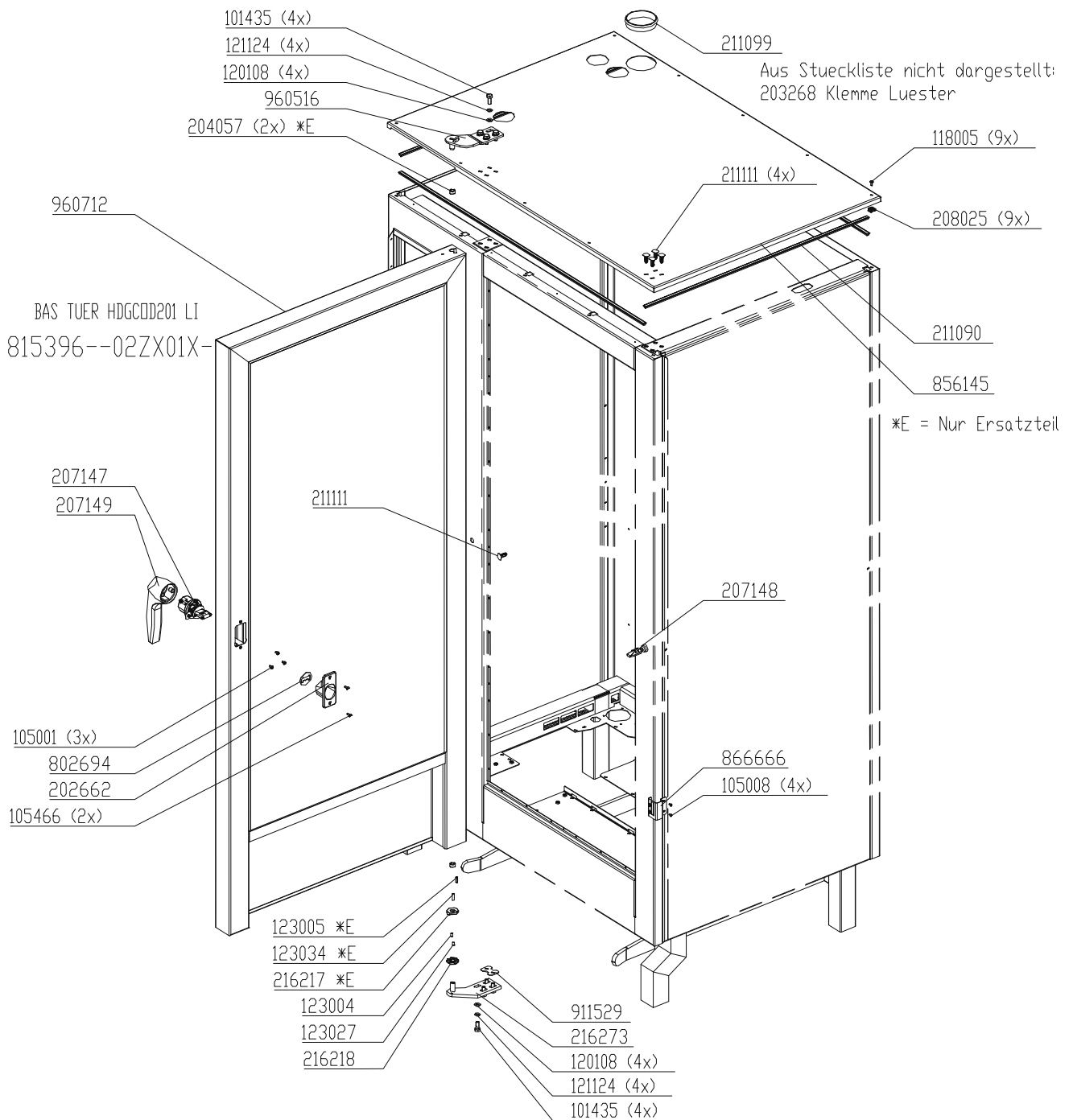
Bis S/N 09021515: #211104 Profildichtung Garraumtür (mit Pactan eingeklebt)
Ab S/N 09021516: Steckbare Profildichtung #211171

Chassis door area HD20.x, right hinged (Gas)



Door profile seal #211171

Chassis door area HD20.x, left hand hinged



Door profile seal #211171



MKN Maschinenfabrik
Kurt Neubauer GmbH & Co
Halberstädter Straße
D-38300 Wolfenbüttel,
Germany
Tel: +49 (0) 53 31/ 89-0
Fax: +49 (0) 53 31/ 89-280