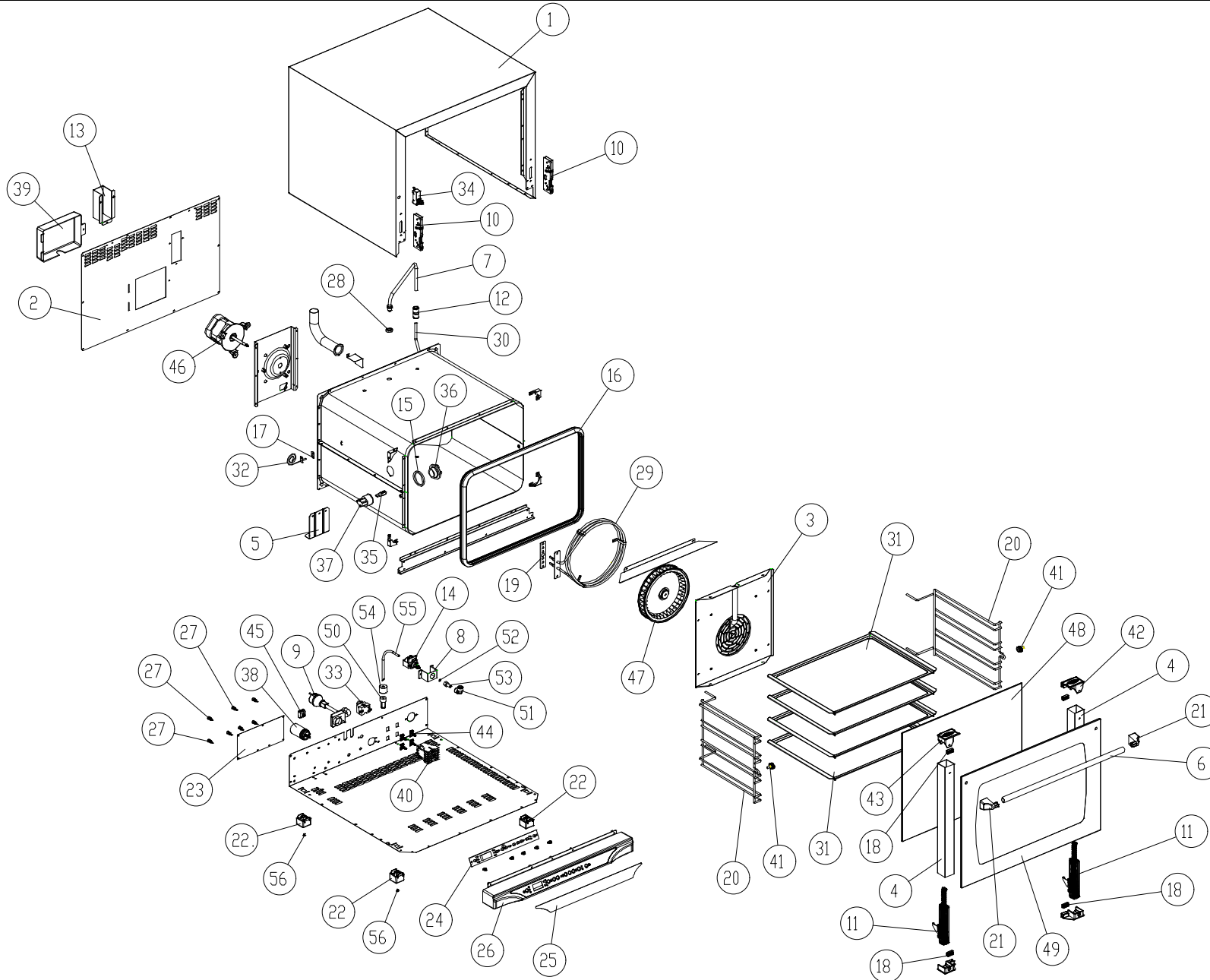


# MOD: XF135

## EXPLODED VIEW DISEGNO ESPLOSO



### LEGEND - LEGENDA

1	OD1275AO	56	VM1095AO
2	OF1085AO		
4	OH1425AO		
5	OH1455AO		
6	OH1925AO		
7	OH1990AO		
8	OH113		
9	CE116		
10	CR1000AO		
11	CR1015AO		
12	EL1055AO		
13	OH2065AO		
14	EL070		
15	GN1065AO		
16	GN1110AO		
17	GN1120AO		
18	GN1130AO		
19	GN224		
21	MG1015AO		
22	PD1000AO		
23	PE1175B0		
24	PE1195B0		
25	PE1250AO		
26	PE1310AO		
27	PE1345AO		
28	RC1170AO		
29	RS1130AO		
30	TB008		
31	TG305		
32	TR1015AO		
33	TR254		
34	VE086B		
35	VE1005A1		
36	VE1010AO		
37	VE1015AO		
38	VE1145AO		
39	VE1101AO		
40	VE1115AO		
41	VI1035A1		
42	VM1045AO		
43	VM1046AO		
44	VM1075AO		
45	VM250		
46	VNI035AO		
47	VNI050AO		
48	VT1060AO		
49	VT1061AO		
50	EL071		
51	EL1185AO		
52	GN207		
53	RC1180AO		
54	RC493		
55	TB009		

# MOD: XF135

# EXPLODED VIEW DISEGNO ESPLOSO



## DESCRIZIONE CODICI

1	OD1275A0	MANTELLO INOX L.M. ARIANNA
2	OF1085A0	SCHIENA ZINCATA L.M. ARIANNA
4	OH1425A0	COLONNINA SX/DX PORTA L.M. ARIANNA-ROSSELLA
5	OH1455A0	STAFFA SOSTEGNO MUFFOLA L.M.
6	OH1925A0	TUBO MANIGLIA D-est=18 Sp=1 L=518 INOX L.M. STEFANIA-ARIA
7	OH1990A0	TUBO ESTERNO UMIDITA + RACCORDO INOX SALDATO L.M.
8	OH113	SUPPORTO POMPA EL070
9	CE116	CAVO 3x1,5 H07RN-F MITI,5+KI/3+SCHUK
10	CR1000A0	ATTACCO CERNIERA PORTA FORNO RIBALTA L.M.
11	CR1015A0	CERNIERA PORTA FORNO RIBALTA L.M. ARIANNA
12	EL1055A0	RIDUZIONE J.G. DA D=10 A D=8 PM201008E
13	OH2065A0	CUFFIA COPRI CAMINO FUJMI ZINCATA L.M.
14	EL070	POMPA NMEIC+ATT SUP POMPA M10 09.02.060/B
15	GN1065A0	GUARN.FE011PTFE PURO ø53x44x4 PORTALAMP.
16	GN110A0	GUARNIZIONE PORTA PROFILO 248 LINEMISS-XCH030
17	GN1120A0	GUARNIZIONE SONDA DI TEMPERATURA NTC
18	GN1130A0	GUARNIZIONE SUPPORTO VETRO L.M. L=22mm
19	GN224	GUARN.PTFE+CARB 100x22x0,8sp-c/fori 1999
21	MG1015A0	TERMINALE MANIGLIA L.M.
22	PD1000A0	PIEDINO QUADRO 35X35 H26 NYLON CARICATO VETRO GRIGIO
23	PE1175B0	SCHEDA POTENZA L.M. DYNAMIC 230V
24	PE1195B0	SCHEDA CONTROLLO L.M. DYNAMIC 230V
25	PE1250A0	MASCHERINA SERIGRAFATA L.M. 600 DYNAMIC
26	PE1310A0	CRUSCOTTO COMANDI IN PLASTICA L.M. 600
27	PE1345A0	DISTANZIALE NYLON INCASTRO MASCHIO-INCASTRO MASCHIO
28	RC1170A0	RACCORDO M14 H=7 CH=20 INOX
29	RS1130A0	RESISTENZA CIRCOLARE D=230 3 SPIRE H46 2900W 230V
30	TB008	TUBO PE 7,93x4,75 TRASPARENTE
31	TG305	TEGLIA 460x330 PIANA ALLUMINIO
32	TR1015A0	SONDA DI TEMP. NTC UL
33	TR254	TERM.SIC.BIP.335°C RIARMO MANUALE
34	VE086B	MICROINTERRUTTORE PORTA MF09 16A
35	VE1005A1	LAMPADA ALOGENA 40W
36	VE1010A0	VETRO PORTALAMPADA VAPORE BOROSILICATO
37	VE1015A0	PORTA LAMPADA PER LAMPADA ALOGENA
38	VE1145A0	CONDENSATORE 3,5 µF 450 Vvac 50/60 Hz
39	VE1101A0	SCATOLA COPRI MORSETTIERA PP+30%FV L.M.
40	VE1115A0	MINICONTATTORE QUADRIPOLARE 20 A 230 V
41	VI1035A1	NOTTOLINO M6x12,5 CON TAGLIO OTT.CROM.FERMA GRIGUE X
42	VM1045A0	TAPPO SUP. DX COLONNINA PORTA VETRO INTERNO LINEMISS
43	VM1046A0	TAPPO SUP. SX COLONNINA PORTA VETRO INTERNO LINEMISS
44	VM1075A0	CLIP DI FISSAGGIO PER TELERUTTORI
45	VM250	MORSETT.A PETTINE
46	VN1035A0	MOTORE SISME 230 Vvac LINE MISS
47	VN1050A0	VENTOLA D=196 H=32 38 PALE INOX DADO M6
48	VT1060A0	VETRO INTERNO 515X414X4 BETFL L.M. ARIANNA
49	VT1061A0	VETRO ESTERNO SER. GIALLO 598X424X5 TFL L.M. ARIANNA
50	EL071	FILTRO 009A D=7,75mm
51	EL1185A0	RACCORDO A GOMITO J.GUEST Ø8 - Ø8
52	GN207	O-RING GOMMA NBR70/75SH R=4
53	RC1180A0	RIDUZIONE M10X1 FEMM-Ø8 OTTONE
54	RC493	AFFONDATE FILTRO POMPA UMIDIF.
55	TB009	TUBO POLIPROPILENE TRASP. 6x4mm

56	VM1095A0	TAPPO IN GOMMA NERO D=3.5 H=6.5
----	----------	---------------------------------

## DESCRIPTION

1	OD1275A0	
2	OF1085A0	
4	OH1425A0	LEFT/RIGHT DOOR COLUMN L.M. ARIANNA-ROSSELLA
5	OH1455A0	
6	OH1925A0	STAINLESS STEEL TUBE HANDLES D-est=18 Sp=1 L=518 L.M. STEF-
7	OH1990A0	
8	OH113	ENG-SUPPORTO POMPA EL070
9	CE116	EL.CABLE3x1.5+SCHUKO+TERM.
10	CR1000A0	HINGE LATCH L.M.
11	CR1015A0	
12	EL1055A0	J.G. REDUCTION FROM D=10 TO D=8 PM201008E
13	OH2065A0	
14	EL070	PUMP NMEIC+ATT SUP PUMP M10 09.02.060/B
15	GN1065A0	SEAL FOR LAMP GLASS COVER (FE01) PURE PTFE ø53x44x4
16	GN110A0	DOOR GASKET PROFILE 248 LINE MISS-XCH030
17	GN1120A0	TEMPERATURE PROBE NTC SEAL
18	GN1130A0	INT. GLASS SEAL L.M. L=22mm
19	GN224	PTFE+CARB 100x22x0,8sp-c/fori 1999 GASKET
21	MG1015A0	
22	PD1000A0	GREY SQUARE FOOT 35x35 H26 NYLON WITH GLASS
23	PE1175B0	POWER CARD L.M. DYNAMIC 230V
24	PE1195B0	CONTROL BOARD L.M. DYNAMIC
25	PE1250A0	STICKER WITH SERIGRAPHY L.M. 600 DYNAMIC
26	PE1310A0	
27	PE1345A0	
28	RC1170A0	
29	RS1130A0	CIRC. HEAT. ELEMENT D=230 3 TURNS H46 2900W 230V
30	TB008	TRANSPARENT TUBE PE 7,93x4,75
31	TG305	TRAY 460x330 FLAT ALUMINIUM
32	TR1015A0	TEMPERATURE PROBE NTC UL
33	TR254	SECURITY THERMOSTAT BIP. 335°C
34	VE086B	DOOR MICROSWITCH MF09 16A
35	VE1005A1	HALOGEN LAMP 40W
36	VE1010A0	BOROSILICATE LIGHT BULB GLASS COVER
37	VE1015A0	LAMP HOLDER FOR HALOGEN LAMP
38	VE1145A0	CONDENSER 3.5 µF 450 Vvac 50/60 Hz
39	VE1101A0	COVER FOR TERMINAL BOX PP+30%FV L.M.
40	VE1115A0	MINICONTACTOR WITH 4 POLES 20 A 230 V
41	VI1035A1	CHROMIUM PLATED BRASS NUT M6x12,5 TO STOP LATERAL SUP
42	VM1045A0	
43	VM1046A0	
44	VM1075A0	
45	VM250	"COMB" TERMINAL BOARD BM 5251 1 B3-
46	VN1035A0	MOTOR 230 Vac LINE MISS
47	VN1050A0	
48	VT1060A0	INNER GLASS 515x414x4 BETFL L.M. ARIANNA
49	VT1061A0	
50	EL071	FILTER 009A D=7,75mm
51	EL1185A0	ELBOW CONNECTION J. GUEST Ø8 - Ø8
52	GN207	ENG-O-RING GOMMA NBR70/75SH R=4
53	RC1180A0	
54	RC493	BALLAST FOR FILTER FOR WATER PUMP
55	TB009	CLEAR POLYPROPYLENE PIPE 6x4mm

56	VM1095A0	BLACK RUBBER LID D=3.5 H=6.5
----	----------	------------------------------