

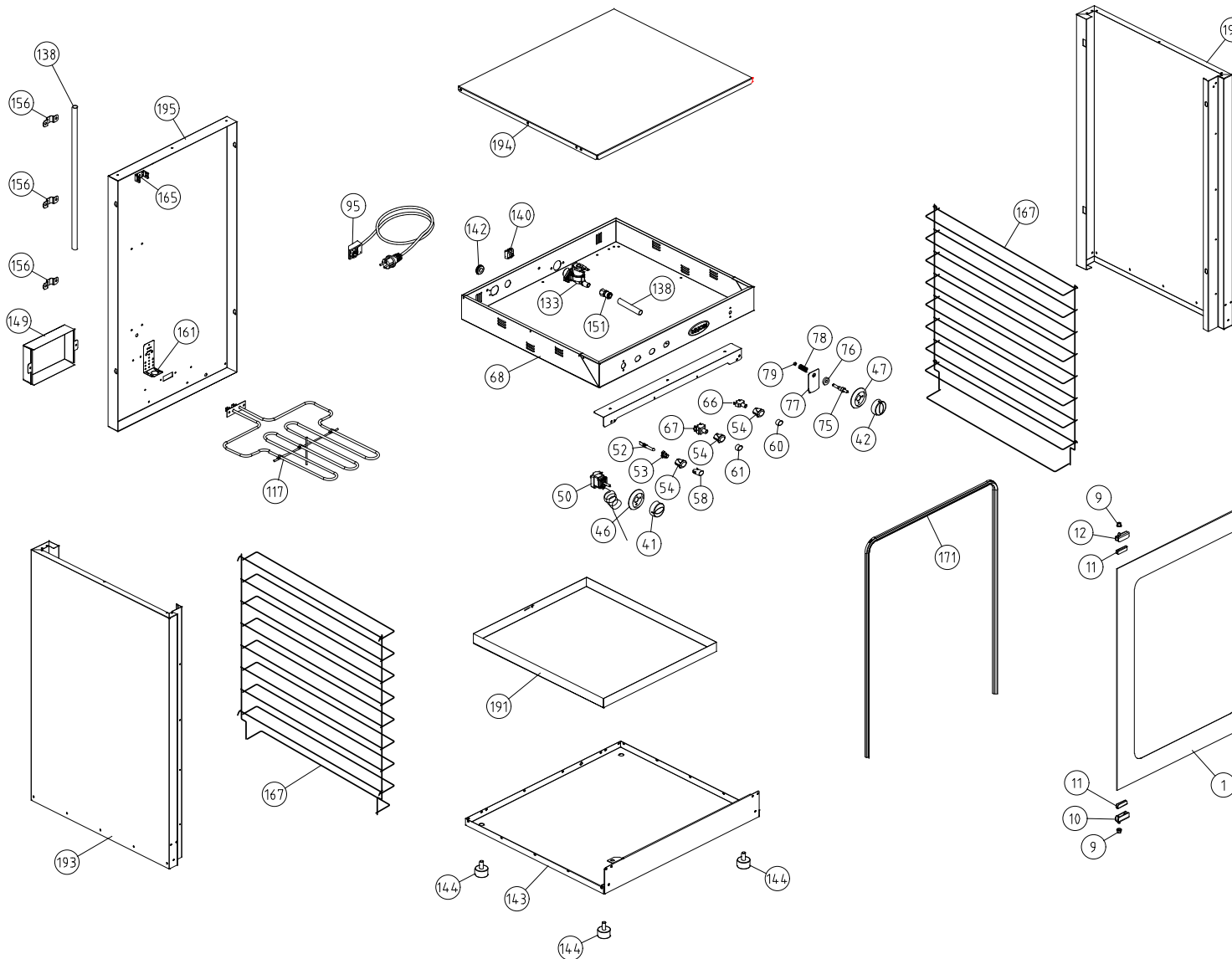
MOD: XL041

EXPLODED VIEW DISEGNO ESPLOSO



LEGEND - LEGENDA

1	VT071	58	VE164
9	RC492A	60	VE175
10	CR046	61	VE176
11	GN006A	66	VE169
12	CR045	67	VE168
41	MNI21	68	OA0198A
42	MN048	75	VI1520A0
46	MNI005A0	76	GN005
47	MNI000A0	77	OH002
50	TR022	78	RC1020A0
52	VE177	79	VI323
53	VE162	95	CE116
54	VE161	117	RS057
		133	EL1140A0
		138	TB008
		140	VM250
		142	VE057
		143	OE024A
		144	PD061A
		149	OH611A
		156	2H072
		161	KH071A
		165	OH318A
		167	GR055
		171	GN009B
		191	OH195A
		192	OD056A
		193	OD057A
		194	OD042A
		195	OF024A



DESCRIZIONE CODICI

1	VT071	VETRO PORTA SER.696x523x4 TFL XL041/51
9	RC492A	BOCCOLA PER CR045-46 12x8,5 Di=5,3 AISI304
10	CR046	CERN.SX INOX XV-XL-XB
11	GN006A	GUARN.PORTA FREDDA A BAND. PTFE CAR/CARB Sp=1mm
12	CR045	CERN.DX INOX XV-XL-XB
41	MN121	MANOPOLA CON INDICE NON SERIGRAFATO '99
42	MN048	GHIERA ANONIMA PER LIEVITATORI
46	MN1005AO	GHIERA PER TERMOSTATO 70°C ARGENTO
47	MN1000AO	MANOPOLA CON INDICE SERIGR. ARGENTO
50	TRO22	TERMOSTATO 2-72°C 55.19012.815
52	VE177	LUCE SPIA FLUORO STD 230V
53	VE162	SUPPORTO LAMPADA INTERNO
54	VE161	SUPPORTO D16 ELLITTICO NERO PAST

58	VE164	GEMMA VERDE TERMOMETRO ORO
60	VE175	TASTO ARGENTO OPACO NUVOLETTA ORO
61	VE176	TASTO ARGENTO OPACO "0-1" ORO
66	VE169	PULSANTE UNIPOLARE NA
67	VE168	INT.BIPOLARE NA/NA
68	0A0198A	CRUSCOTTO INOX XL041 '01
75	VI1520A0	ALBERINO INOX MANOPOLA LIEVITATORI
76	GN005	RONDELLA PORTA XL 20x8,5x5 IN PTFE CAR.CARB
77	0H002	PIASTRINA INOX CHIUSURA PORTA XL041
78	RC1020A0	MOLLA INOX PORTA "XL"
79	VI323	DADO AUTOBLOCCANTE M6 H=8
95	CE116	CAVO 3x1,5 H07RN-F MTI,5+KI/3+SCHUK
117	RS057	RESISTENZA 1050W LIEVITATORE 0700 CON SUPP.
133	EL1140A0	ELETTROVALVOLA SINGOLA ATT. J.GUEST INCORPORATO
138	TB008	TUBO PE 7,93x4,75 TRASPARENTE
140	VM250	MORSETT.A PETTINE
142	VE057	PASSACAVO GOMMA De=26 Di=15 Sp=10
143	0E024A	FONDO ESTERNO INOX XL041 '01
144	PD061A	PIEDINO M10 D=35 H=20 NERO OPACO
149	0H611A	SCATOLA EST. RES. SEIRE XL E ELETTROV. GAS XG090/310/410
156	2H072	OMEGA DOPPIO FERMATUBO UM. XV401/501/XG410
161	KH071A	STAFFA FISS.OMEGA FERMA TUBO UMID.
165	0H318A	SOSTEGNO BULBO STANDARD '02
167	GR055	GRIGLIA LAT. DX/SX CROMATA XL041
171	GN009B	GUARNIZIONE PORTA NERA 12G XL041 XF LINE
191	0H195A	VASCA INOX UMIDITA' 500x435x30 '01
192	OD056A	FIANCO DX INOX XL041 '01
193	OD057A	FIANCO SX INOX XL041 '01
194	OD042A	COPERCIO INOX XL041 '01
195	OF024A	SCHIENA INOX XL041 '01

DESCRIPTION

1	VT071	SER. DOOR GLASS 696x523x4 TFL XL041/51
9	RC492A	BUSHING FOR CR045-46 12x8,5 Di=5,3 AISI304
10	CR046	
11	GN006A	COLD DOOR SEAL PTFE CAR/CARB Thickness=1mm
12	CR045	
41	MN121	KNOB WITHOUT SERIGRAPHIED INDEX '99
42	MN048	ANONYMOUS PLASTIC RING FOR LEAVENING CABINETS
46	MN1005AO	PLASTIC DIAL FOR THERMOSTAT 70°C WITH SILVER DIGITS
47	MN1000AO	KNOB WITH SER.SILVER INDEX
50	TRO22	THERMOSTAT 2-72°C 55.19012.815
52	VE177	FLUORINE WARNING LIGHT STD 230V
53	VE162	INTERNAL PILOT LAMP SUPPORT
54	VE161	BLACK ELLIPTICAL SUPPORT D16

58	VE164	GREEN PILOT WITH GOLD THERMOMETHER SERIGRAPHY
60	VE175	OPAQUE SILVER KEY WITH GOLD "CLOUD" SERIGRAPHY
61	VE176	OPAQUE SILVER KEY WITH GOLD "0-1" SERIGRAPHY
66	VE169	UNIPOLAR NA PUSH BUTTON
67	VE168	BIPOLAR NA/NA PUSH-BUTTON
68	0A0198A	
75	VI1520A0	STAINLESS STEEL SHAFT FOR PROFER KNOB
76	GN005	DOOR WASHER XL 20x8,5x5 PTFE CAR.CARB.
77	0H002	STAINLESS STEEL DOOR CLOSING CLIP XL041
78	RC1020A0	IINOX SPRING DOOR "XL"
79	VI323	AUTOBLOCKING NUT M6 H=8
95	CE116	EL.CABLE 3x1.5 H07RN-F MTI,5+KI/3+SCHUKO
117	RS057	HEAT. ELEMENT 1050W PROFER 0700 W/ SUPPORT
133	EL1140A0	SINGLE WATER ELECTROVALVE W/ J.GUEST CONNECTION INCLUD
138	TB008	TRANSPARENT TUBE PE 7,93x4,75
140	VM250	"COMB" TERMINAL BOARD BM 5251 1 B3-
142	VE057	
143	0E024A	
144	PD061A	SMALL FOOT M10 D=35 H=20 BLACK OPAQUE
149	0H611A	
156	2H072	ENG-OMEGA DOPPIO FERMATUBO UM. XV401/501/XG410
161	KH071A	
165	0H318A	
167	GR055	
171	GN009B	
191	0H195A	STAINLESS STEEL BASIN 500x435x30 '01
192	OD056A	RIGHT STAINLESS STEEL SIDE PANEL XL041 '01
193	OD057A	RIGHT STAINLESS STEEL SIDE PANEL XL041 '01
194	OD042A	STAINLESS STEEL COVER XL041 '01
195	OF024A	