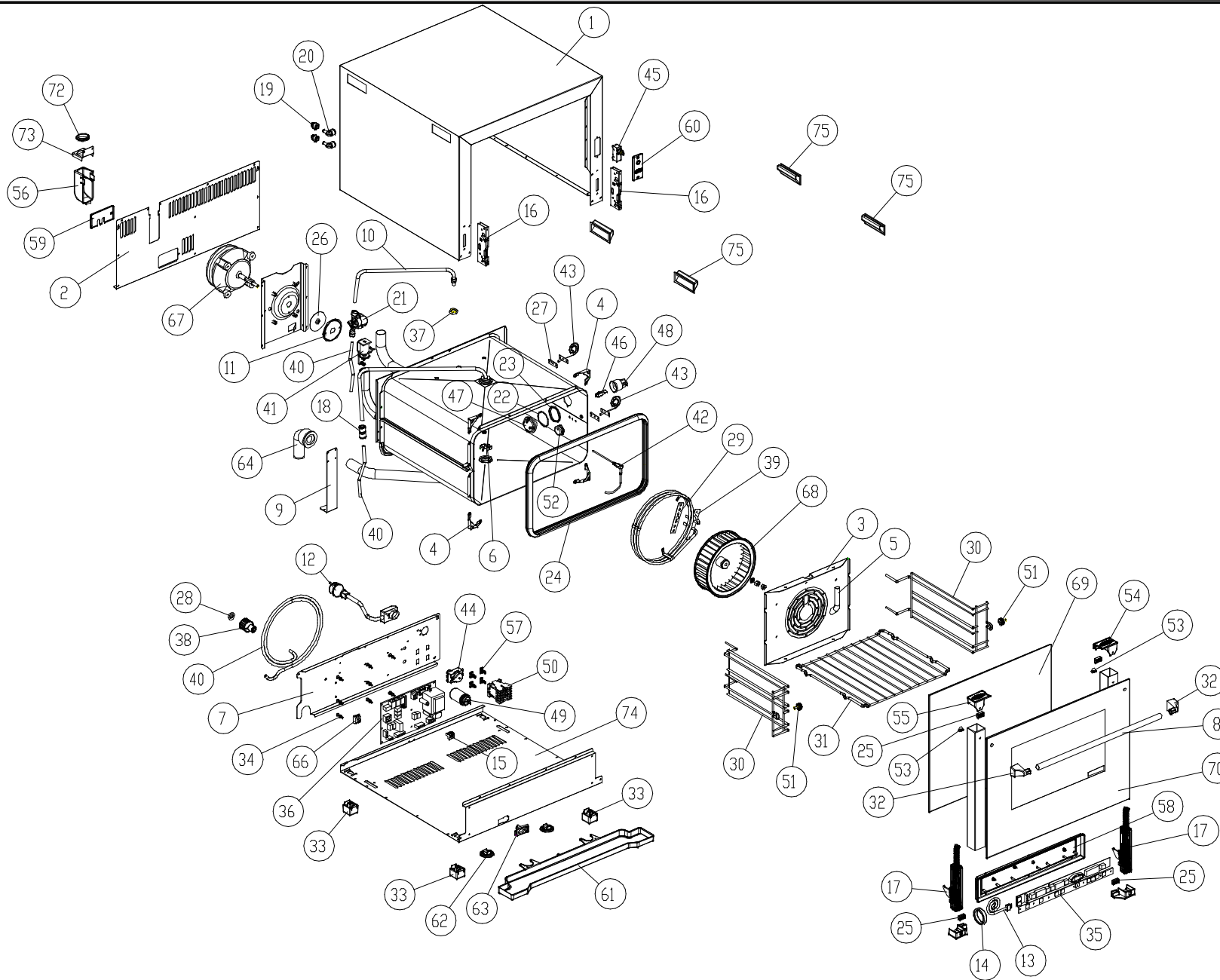


# MOD: XVC054

## EXPLODED VIEW DISEGNO ESPLOSO



### LEGEND - LEGENDA

1	OD1430B0	56	VM1065A0
2	OF1145A0	57	VM1075A1
3	OG1155A0	59	VM1196A0
4	OH1450A0	60	VM1200A0
5	OH2305A0	61	VM1215A0
6	OH2550A0	62	VM1220A0
7	OH2600A1	63	VM1225A0
8	OH2615B0	64	VM1260A0
9	OH2850A0	66	VM250
10	OH3015A1	67	VNI000B0
11	OH3020A0	68	VNI025A2
12	CE116	69	VTI115B0
13	CE1280A0	70	VTI116A1
14	CE1285A0	72	GN1045A0
15	CE1290A0	73	OH3041A0
16	CR1000A0	74	OE1115B0
17	CR1045A1	75	MG1020A0
18	EL1055A0		
19	EL1185A0		
20	EL1195A0		
21	EL1251A0		
22	GN1055A0		
23	GN1065A1		
24	GN1110A2		
25	GN1265A0		
26	GN1140A0		
27	GN1190A0		
28	GN1200A0		
29	GN224		
30	GRL1075A0		
31	GRP715		
32	MG1015B0		
33	PD1001A0		
34	PE102		
35	PE1610A0		
36	PE1365C1		
37	RC1170A1		
38	RC1210A0		
39	RS1090A1		
40	TB008		
41	VE1135A0		
42	TR1040A1		
43	TR1045A0		
44	TR254		
45	VE1295A0		
46	VE1005A2		
47	VE1010A1		
48	VE1015A1		
49	VE221		
50	VE1115A0		
51	VII035A1		
52	VII515A1		
53	VM1025A0		
54	VM1045B0		
55	VM1046B0		

# MOD: XVC054

# EXPLODED VIEW DISEGNO ESPLOSO



## DESCRIZIONE CODICI

1	OD1430B0	MANTELLO INOX XVC054-XCH014
2	OF1145A0	SCHIENA INOX XVC054
3	OG1155A0	CARTER ARIA INOX XVC054
4	OH1450A0	ANGOLO FACCIAIA MUFFOLA INOX XB-XV-XG L.M.
5	OH2305A0	TUBO INTERNO UMIDITA D=16 Sp=1 INOX L.M.-C.T.
6	OH2550A0	TAPPO PER TUBO DI SCARICO INOX C.T.
7	OH2600A1	PROFILO PORTA COMPONENTI INOX XVC054
8	OH2615B0	TUBO MANIGLIA D-EST=18 SP=1 L=492 INOX XVC054
9	OH2850A0	STAFFA SOSTEGNO MUFFOLA INOX XVC054/104
10	OH3015A1	TUBO ESTERNO UMIDITA+RACCORDO SALDATO
11	OH3020A0	DISCO TENUTA ALBERO MOTORE INOX
12	CE116	CAVO 3x1,5 H07RN-F MTI,5+K1/3+SCHUK
13	CE1280A0	CAVO COLLEGAMENTO POTENZA CONTROLLO L=1,5 MT
14	CE1285A0	FERRITE EMI ROUND MOD. 2643801502
15	CE1290A0	MORSETTO FEMMINA ETRAIBILE CPF 5/4
16	CR1000A0	ATTACCO CERNIERA PORTA FORNO RIBALTA L.M.
17	CR1045A1	CERNIERA PORTA FORNO RIBALTA XVC054-XCH014
18	EL1055A0	RIDUZIONE J.G. DA D=10 A D=8 PM201008E
19	EL1185A0	RACCORDO A GOMITO J.GUEST Ø8 - Ø8
20	EL1195A0	RACCORDO A GOMITO CON J.GUEST CODOLO D8 - D8
21	EL1251A0	ELETTROVALVOLA H2O 1 VIA RID. MAR. JG IN Ø8-OUT Ø10 240V
22	GN1055A0	OR 46x2 VMQ 70 ROSSO
23	GN1065A1	GUARNIZIONE PORTALAMPADA DE=53,2 DI=44,2 SP=3,2 PTFE P
24	GN1110A2	GUARNIZIONE PORTA PROFILO 248 LINEMISS-XCH030
25	GN1265A0	GUARNIZIONE VETRO INTERNO XVC054/104
26	GN1140A0	GUARNIZIONE PORTAMOTORE STAMP. ALBERO MOT. D10 XB-X
27	GN1190A0	GUARNIZIONE SONDA DI TEMPERATURA C.T.
28	GN1200A0	GUARNIZIONE D=24 RACCORDO 3/4 GOMMA+RETE
29	GN224	GUARN.PTFE+CARB 100x22x0,8sp-c/fori 1999
30	GRL1075A0	GRIGLIA LATERALE DX/SX INOX 3 TG GN XVC054-XVC104
31	GRP715	GRIGLIA GN2/3 PIANA INOX BRILLANTATA 354x325
32	MG1015B0	TERMINALE MANIGLIA L.M.
33	PD1001A0	PIEDINO 35X35 H26 PLASTICA+GOMMA GRIGIO
34	PE102	SUPPORTO PER SCHEDA 24POT98
35	PE1610A0	ASSIEME SCHEDA CONTR. PE135500 + COPERCHIO CRUSCOTTO
36	PE1365C1	SCHEDA POTENZA C.T. SERIE 1 230V 50/60HZ
37	RC1170A1	DADO M14 H=8 CH=22 INOX
38	RC1210A0	RACCORDO 3/4 FEMM. - J.GUEST Ø8 CON FILTRO E VNR
39	RS1090A1	RESISTENZA CIRCOLARE D=230 3 SPIRE H78 2900W 230V
40	TB008	TUBO PE 7,93x4,75 TRASPARENTE
41	VE1135A0	ATTUATORE VENTURI 220V 50/60 Hz SERIE 2
42	TR1040A1	SONDA AL CUORE STAMPATA L=1320
43	TR1045A0	SONDA TEMPERATURA NTC 150
44	TR254	TERM.SIC.BIP.335°C RIARMO MANUALE
45	VE1295A0	MICROINTERRUTTORE PORTA MK 16A 230V UL
46	VE1005A2	LAMPADA HALOPIN ES H66733E5 33W ENERGY SAVER
47	VE1010A1	VETRO COPRILAMPADA TEMPERATO ANTISHOCK
48	VE1015A1	PORTA LAMPADA SERIE 2 PER LAMPADA ALOGENA
49	VE221	CONDENSICAR PRL 5uF 450V FASTON
50	VE1115A0	MINICONTATTORE QUADRIPOLARE 20 A 230 V
51	VI1035A1	NOTTOLINO M6x12,5 CON TAGLIO OTT.CROM.FERMA GRIGIE X
52	VI1515A1	SUPPORTO SONDA AL CUORE CON CAVA PER FILO INOX
53	VM1025A0	TAPPO NYLON PA66 V2 GRIGIO Ø16
54	VM1045B0	TAPPO SUP. DX COLONNINA PORTA VETRO INTERNO L.M.
55	VM1046B0	TAPPO SUP. SX COLONNINA PORTA VETRO INTERNO L.M.

56	VM1065A0	CUFFIA COPRI CAMINO FUMI L.M.
57	VM1075A1	CLIP DI FISSAGGIO PER TELERUTTORI
59	VM1196A0	PIASTRINA PASSAGGIO CAVI ACCESSORI C.T.
60	VM1200A0	PIASTRINA SUPPORTO MICROPORTA MECCANICO
61	VM1215A0	CASSETTO RACCOGLIGOCCE XVC054/204
62	VM1220A0	CLIP FISSAGGIO CASSETTO RACCOGLIGOCCE C.T.
63	VM1225A0	PIASTRINA PASSACAVO CONTROLLO ELETTRONICO C.T.
64	VM1260A0	CURVA A 90° RACCORDO SCARICO
66	VM250	MORSETT. A PETTINE
67	VN1000B0	MOTORE COND. 5uF 200W ALB. M8 CONN. 5 POLI
68	VN1025A2	VENTOLA D=196 H=61 38 PALE INOX DADO M8
69	VT1115B0	VETRO INTERNO 489x415x6 BETFL XVC054-XCH014
70	VT1116A1	VETRO ESTERNO SER. 572X424X5 CTR. XVC054-XCH014
72	GN1045A0	GUARN.ANTIVIBR. CAMINO-SCARICO ø131-øe39,9-Sp=7,5
73	OH3041A0	PROFILO COPRICAMINO INOX XVC054/104
74	OE1115B0	FONDO ESTERNO INOX XVC054/XCH014
75	MG1020A0	MANIGLIA POCKET PULL

## DESCRIPTION

1	OD1430B0	STAINLESS STEEL COVER XVC054-XCH014
2	OF1145A0	XVC054 STAINLESS STEEL BACK PANEL
3	OG1155A0	XVC054 STAINLESS STEEL FAN GUARD PANEL
4	OH1450A0	STAINLESS STEEL MUFFLE FRONT FACE ANGLE XB-XV-XG-L.M.
5	OH2305A0	INTERNAL WATER PIPE D=16 Sp=1 INOX L.M.-C.T.
6	OH2550A0	STAINLESS STEEL COVER FOR DRAIN PIPE CHEFTOP
7	OH2600A1	
8	OH2615B0	
9	OH2850A0	ZINCED MUFFLE SUPPORT BRACKET XVC054/104
10	OH3015A1	
11	OH3020A0	STAINLESS STEEL SEALING DISC FOR MOTOR
12	CE116	EL.CABLE 3x1,5 H07RN-F MTI,5+K1/3+SCHUKO
13	CE1280A0	CABLE TO CONNECT POWER-CONTROL BOARD L=1,5 MT
14	CE1285A0	EMI ROUND FERRITE MOD.2643801502
15	CE1290A0	EXTRACTABLE FEMALE TERMINAL CPF 5/4
16	CR1000A0	HINGE LATCH L.M.
17	CR1045A1	DOOR HINGE XVC054-XCH014
18	EL1055A0	STRAIGHT REDUCTION FROM D=10 TO D=8 J. GUEST
19	EL1185A0	ELBOW CONNECTION J. GUEST Ø8 - Ø8
20	EL1195A0	ELBOW UNION WITH J.GUEST TERMINAL D8 - D8
21	EL1251A0	ONE INLET WATER VALVE J.G.CONN. BROWN RED. Ø8-OUT Ø10
22	GN1055A0	OR 46x2 VMQ 70 RED
23	GN1065A1	SEAL FOR LAMP GLASS COVER (PURE PTFE) DE=53,2 DI=44,2 TH=
24	GN1110A2	DOOR GASKET PROFILE 248 LINE MISS-XCH030
25	GN1265A0	INTERNAL GLASS SEAL XVC054/104
26	GN1140A0	MOTOR GASKET
27	GN1190A0	CHEFTOP TEMPERATURE PROBE SEAL
28	GN1200A0	3/4 CONNECTION SEAL D=24 RUBBER+NET
29	GN224	PTFE+CARB 100x22x0,8sp-w/holes 1999 GASKET
30	GRL1075A0	RIGHT/LEFT LATERAL GRID STAINLESS STEEL 3 TRAYS XVC054-XVC
31	GRP715	GRID GN2/3 FLAT STAINLESS STEEL POLISHED 354x325
32	MG1015B0	HANDLE END L.M.
33	PD1001A0	FOOT 35X35 H26 GREY PLASTIC+RUBBER
34	PE102	SUPPORT FOR CARD 24POT98
35	PE1610A0	CONTROL BOARD PE1355 + BOARD COVER C.T. B.T.
36	PE1365C1	POWER CARD C.T. SERIE 1 230V 50/60 HZ
37	RC1170A1	STAINLESS STEEL NUT M14 H=8 CH=22
38	RC1210A0	Ø8 J.GUEST 3/4 FEMALE CONNECTION WITH FILTER+NONRETUR
39	RS1090A1	CIRC.HEAT. ELEMENT D=230 3 TURNS H78 2900W 230V
40	TB008	TRANSPARENT TUBE PE 7,93x4,75
41	VE1135A0	VENTURI ACTUATOR 220 V 50/60 Hz SERIES 2
42	TR1040A1	MOLDED CORE PROBE L=1320
43	TR1045A0	TEMPERATURE PROBE NTC 150
44	TR254	SECURITY THERMOSTAT BIP. 335°C
45	VE1295A0	DOOR MICROSWITCH MK 16A 230V UL
46	VE1005A2	
47	VE1010A1	TEMPERED LIGHT BULB GLASS COVER
48	VE1015A1	LAMP HOLDER SERIE 2 FOR HALOGEN LAMP
49	VE221	ICAR CONDENSER PRL 5uF 450V FASTON
50	VE1115A0	MINICONTACTOR WITH 4 POLES 20 A 230 V
51	VI1035A1	CHROMIUM PLATED BRASS NUT M6x12,5 TO STOP LATERAL SUP
52	VI1515A1	STAINLESS STEEL CORE PROBE SUPPORT WITH CANAL FOR CABLE
53	VM1025A0	NYLON LID PA66 V2 GREY Ø16
54	VM1045B0	RIGHT UPPER LID FOR COLUMN FOR INTERNAL GLASS L.M.
55	VM1046B0	LEFT UPPER LID FOR COLUMN FOR INTERNAL GLASS L.M.

56	VM1065A0	PLASTIC COVER FOR FUMES CHIMNEY L.M.
57	VM1075A1	PLASTIC CLIP TO FIX CONTACTORS
59	VM1196A0	PASSAGE PLATE FOR ACCESSORIES CABLES CHEFTOP
60	VM1200A0	DOOR MECHANIC MICROSWITCH SUPPORT PLATE
61	VM1215A0	DRIP TRAY XVC204
62	VM1220A0	CLIP TO FIX DRIP TRAY C.T.
63	VM1225A0	PLATE WITH HOLES FOR ELECTRONIC CABLE CHEFTOP
64	VM1260A0	90° CURVED DRAIN PIPE
66	VM250	"COMB" TERMINAL BOARD
67	VN1000B0	MOTOR COND. 5uF 200W ALB. M8 CONN. 5 TERMINALS
68	VN1025A2	FAN D=196 H=61 38 BLADES STAINLESS STEEL NUT M8
69	VT1115B0	INTERNAL GLASS 489X414X6 BETFL XVC054
70	VT1116A1	SERIGR. EXTERNAL GREY GLASS 572X424X5 XVC054-XCH014
72	GN1045A0	ANTIVIBR. SEAL FOR EXHAUST CHIMNEY ø131-øe39,9-Sp=7,5
73	OH3041A0	STAINLESS STEEL CHIMNEY COVER XVC054/104
74	OE1115B0	STAINLESS STEEL EXTERNAL BOTTOM PANEL XVC054/XCH014
75	MG1020A0	POCKET PULL HANDLE

**MOD: XVC054**

**EXPLODED VIEW  
DISEGNO ESPLOSO**

